



LIMITER™

#9 FALL/WINTER 2014

icon

# LIMITER™



icon



# LIMITER™

ICON ONE THOUSAND





# ZX3RR

## CUSTOM BUILT BY ICON MOTOSPORTS

KAWASAKI NINJA 300™ SPEC RACE CONCEPT

The ICON ZX3-RR is a concept race motorcycle built in-house at the Portland, Oregon-based headquarters of ICON Motorsports. ICON partnered with the sportbike division of Kawasaki USA to develop a spec racing platform capable of delivering the thrill of close competition, but with a minimized financial investment.

Motorcycle racing has always been an expensive hobby, and race organizations are looking to contain costs wherever possible. The ICON ZX3-RR concept is based on the proven Kawasaki Ninja 300. Though lacking the horsepower numbers of its bigger-capacity stable mates, a grid of equally-outfitted small-displacement motorcycles can generate just as much excitement for rider and spectator.

More than just a design study, the ICON ZX3-RR is a very real commitment by ICON to deliver unique and engaging products, technology, and attitude to the modern rider.



WATCH THE VIDEO  
rideicon.com/videos/zx3rr







Fully skinned in custom race fairings, the serious race nature of the ZX3-RR is immediately apparent. The corners are where the little Ninja really shines, and a full complement of Ohlins® R&T suspension and ContiRaceAttack™ tires take the handling to the next level. While most of the chassis remains stock to keep costs in check, ICON added a braced swingarm and high-mount subframe for increased rigidity and slightly larger ergonomics. Finally, a QuasiStinger™ Arrow® exhaust pays homage to the two-stroke race machines of a bygone era.



The ICON ZX3-RR utilizes a tablet dashboard, based on the Android OS. Beyond the usual array of speed, tachometer, and engine monitoring, the rider can adjust fuel maps, monitor lap times, and quickly broadcast race updates to their social networks.





# HYPERSPORT™

## JACKET

**CRAFTED FOR  
ACCELERATION,  
TAILORED FOR  
THE LIMIT**

SHOWN IN GLORY  
VIEW ADDITIONAL COLORS ON PAGE 64

// S-2X \$340 // 3X-4X \$390



**WATCH THE VIDEO**

[rideicon.com/videos/hypersport-collection](http://rideicon.com/videos/hypersport-collection)

The ICON Hypersport jacket is designed for precision at speed. Full leather chassis, aggressive attack fit, refined pre-curved arm design, and neoprene panels bring the jacket tighter to the body and make it more aerodynamic at speed. The Hypersport jacket shell is constructed from TrackSpec™ leather and features a full D30® Impact Protector package (shoulders, elbows, & back). The Hypersport also features ICON's new SportCuff™ - designed for ease of use, reduced cuff bulk, and enhanced wrist articulation. Integrated TechMesh™ paneling and engineered perforation throughout the entire chest and back help reduce core temperature - necessary for aggressive riding.



GLORY

VIEW ADDITIONAL COLORS ON PAGE 64



**FIT:** Icon Attack Fit  
**MATERIAL:** 1.2-1.4mm TrackSpec™ Leather Chassis  
**LINER:** Insulated SatinCore™ Vest Liner - removable  
**PROTECTORS:** D30® Impact Protectors - shoulders, elbows, back  
**DETAILS:** Integrated flex zones, TechMesh™ Panels, Pre-curved Arms, YKK® Zippers, Drop tail, Interior zipper, slash & cargo pockets, Waist zipper connects to Hypersport™ Pant, Streamlined SportCuff™, Neoprene Collar, Thumb Loops





# HYPERSPORT™

## SHORT GLOVE

### TRACK DERIVED, STREET FOCUSED

ICON is always searching for the upper hand; we've found it with the Hypersport glove. The materials and construction of the Hypersport glove have been purposely chosen for their innate abilities to provide this advantage. It all starts with a French cowhide and kangaroo chassis. The French cowhide backhand, supple & strong, provides excellent comfort and flexibility. The kangaroo palm, a hallmark of purpose-built track gloves, provides optimum abrasion resistance and dexterity. Additional panels of digital BattleHide™ goatskin are located in areas of high wear from grips. The mechanical articulation panels, which run the length of each finger, provide excellent flexibility from the very first wear - no break-in period needed. Key construction techniques include ICON's exclusive floating knuckle, which allows for maximum knuckle articulation, and an out-seamed finger box for all day comfort. The Hypersport gloves feature full knuckle coverage from the vented TPU/Polycarbonate knuckle plates. A wrist hook & loop closure allows for a secure fit.

**MATERIAL:** French Cowhide Chassis, Kangaroo palm with BattleHide™ reinforcements

**DETAILS:** Floating knuckle, TPU/Polycarbonate knuckle plates, TPU Finger plates, Articulated fingers, Out-seam finger construction, Hook & loop closure



SHOWN IN GLORY  
VIEW ADDITIONAL COLORS ON PAGE 65

// S-4X \$135



**WATCH THE VIDEO**  
[rideicon.com/videos/hypersport-collection](https://rideicon.com/videos/hypersport-collection)

GLORY  
VIEW ADDITIONAL COLORS ON PAGE 65





RIGHT SIDE GRAPHIC

## MISCREANT™ AIRMADA HELMET

We asked the master cylinder what side he preferred. His response was as arcane as it was anecdotal: "Prettier than a blue-nosed mule and half as wide." It was an odd response to an even odder graphic. Rumor has it that we wouldn't release this graphic due to its graphic nature. So naturally we did. Get it?

**HEADFORM:** Long oval

**VENTING:** Recessed twin channel Supervent™

**SHIELD:** Icon Optics™ fog free shield with Prolock™

**LINER:** Hydradry™ moisture wicking liner

**CERTIFICATION:** World Standard DOT, ECE, SAI\*, SG\*

\* Does not ship with SAI or SG certification sticker unless purchased from an authorised dealer in Australia or Japan



LEFT SIDE GRAPHIC



**WATCH THE VIDEO**

[rideicon.com/videos/airmada-miscreant-helmet](https://rideicon.com/videos/airmada-miscreant-helmet)





RED



BLACK

## GANESH™ AIRMADA HELMET

Ganesh is known by many things, but most importantly as a remover of obstacles and patron of intellect and wisdom. So when that beige Camry crosses your path with no blinker, may Ganesh be on your side, and may you drop some knowledge on them at the next stoplight.

**HEADFORM:** Long oval

**VENTING:** Recessed twin channel Supervent™

**SHIELD:** Icon Optics™ fog free shield with Prolock™

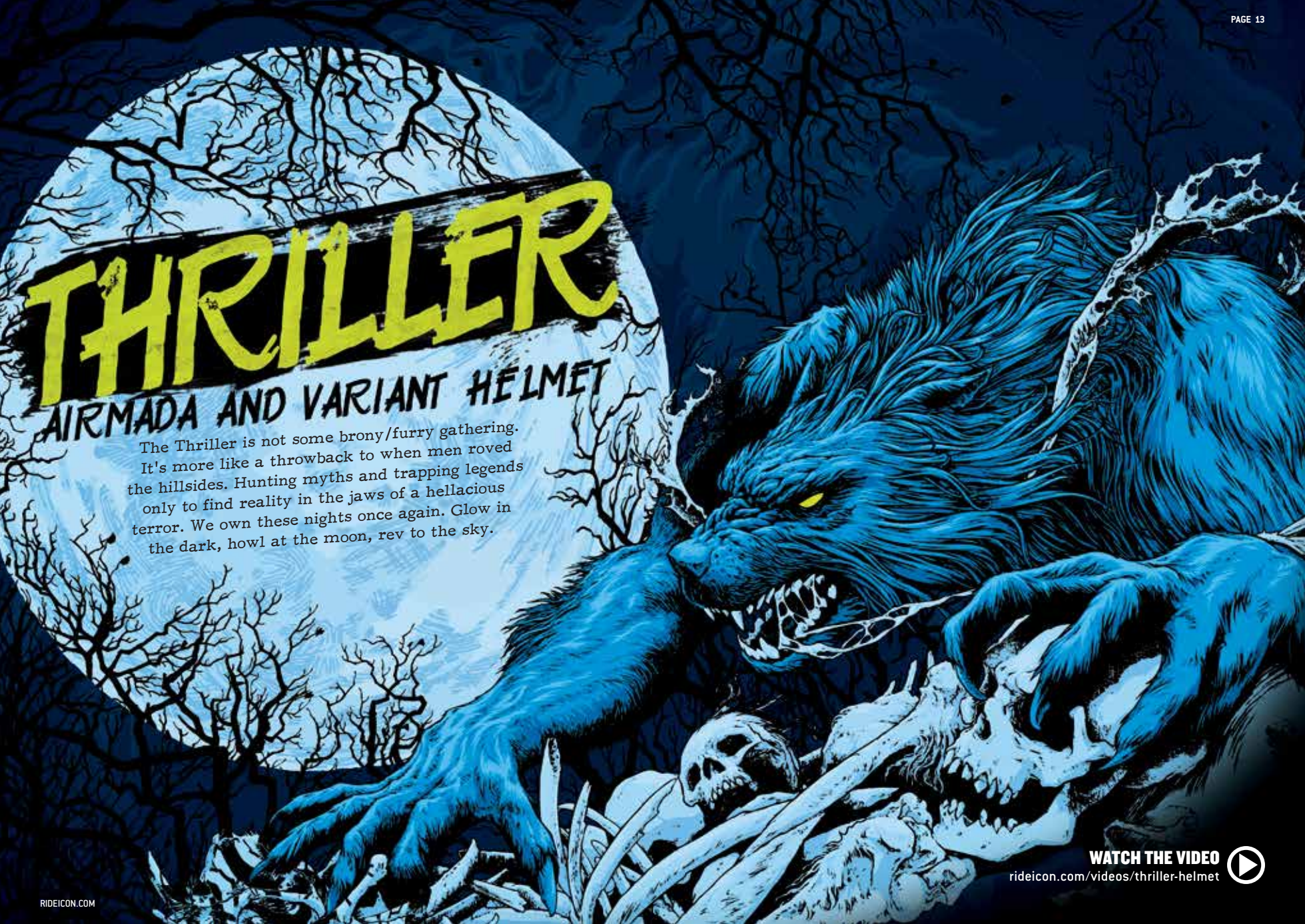
**LINER:** Hydradry™ moisture wicking liner

**CERTIFICATION:** World Standard DOT, ECE, SAI\*, SG\*

\* Does not ship with SAI or SG certification sticker unless purchased from an authorised dealer in Australia or Japan

AVAILABLE IN RED AND BLACK // XS-3X \$255





# THRILLER

## AIRMADA AND VARIANT HELMET

The Thriller is not some brony/furry gathering. It's more like a throwback to when men roved the hillsides. Hunting myths and trapping legends only to find reality in the jaws of a hellacious terror. We own these nights once again. Glow in the dark, howl at the moon, rev to the sky.







BLUE



BLACK

## THRILLER™ AIRMADA HELMET

DARK SMOKE SHIELD INCLUDED  
BLUE HELMET FEATURES GLOW IN THE DARK GRAPHIC

AVAILABLE IN BLACK AND BLUE // XS-3X \$280

**HEADFORM:** Long oval

**VENTING:** Recessed twin channel Supervent™

**SHIELD:** Icon Optics™ fog free shield with Prolock™

**LINER:** Hydradry™ moisture wicking liner

**CERTIFICATION:** World Standard DOT, ECE, SAI\*, SG\*

\* Does not ship with SAI or SG certification sticker unless purchased from an authorised dealer in Australia or Japan



## THRILLER™ VARIANT HELMET

DARK SMOKE SHIELD INCLUDED  
FEATURES GLOW IN THE DARK GRAPHIC

AVAILABLE IN BLACK // XS-3X \$395

**HEADFORM:** Intermediate oval

**VENTING:** Multiple oversized intake and exhaust ports

**SHIELD:** Fog-Free Precision Optics™ Shield

**LINER:** Hydradry™ moisture wicking liner

**CERTIFICATION:** World Standard DOT, ECE, SAI\*, SG\*

\* Does not ship with SAI or SG certification sticker unless purchased from an authorised dealer in Australia or Japan



A full-page photograph of a motorcycle rider leaning into a turn on a track. The rider is wearing a blue and white racing suit and a red helmet. The motorcycle is a Hyper Sport Prime, featuring a white and blue color scheme with orange accents on the wheels. The background shows a clear blue sky and a track with white and red markings.

# **HYPER SPORT PRIME™**

**ENGINEERED FOR THE NEXT  
EVOLUTION IN VELOCITY**



## HYPERSPORT PRIME JACKET

The Hypersport Prime jacket is the elite performance garment of the ICON line. The Hypersport Prime chassis is constructed of multiple materials, each chosen for their unique performance properties. TrackSpec™ leather, integrated TPU shoulder & elbow caps, TechMesh™ ventilation panels, and comfort molded neoprene cuffs and collar all play their part in the Hypersport Prime construction. Extensive Unit-Fused™ construction on the back fuses TPU plating onto a 3D airmesh panel, allowing for reinforced ventilation. A full D30® package (shoulders, elbows, back) is fitted within three-position pockets that allow for proper impact protector placement. The Hypersport Prime also features ICON's new SportCuff™ - designed for ease of use, reduced cuff bulk, and enhanced wrist articulation.

**FIT:** Icon Attack Fit

**MATERIAL:** 1.2-1.4mm TrackSpec™ Leather Chassis

**LINER:** Insulated SatinCore™ Vest Liner - removable

**PROTECTORS:** D30® Impact Protectors - shoulders, elbows, back

**DETAILS:** Unit-Fused™ construction, Integrated flex zones, TechMesh™ panels, TPU injected shoulder, back & elbow plates, Pre-curved arms, YKK® zippers, Drop tail, Interior zipper, Slash & cargo pockets, Waist zipper connects to Hypersport™ Pant, Streamlined SportCuff™, Neoprene collar, Thumb loops

SHOWN IN WHITE

VIEW ADDITIONAL COLORS ON PAGE 64

// S-2X \$375 // 3X-4X \$410



**WATCH THE VIDEO**

[rideicon.com/videos/hypersport-prime](https://rideicon.com/videos/hypersport-prime)



WHITE

VIEW ADDITIONAL COLORS ON PAGE 64





## UNIT-FUSED™

Found on the back of the Hypersport Prime jacket, Unit-Fused is an exclusive ICON design feature that incorporates welded TPU reinforcements onto mesh paneling. This creates a zone of cooling for rider comfort while maintaining structural integrity.



## SPORT CUFF™

The streamlined cuff area was designed to reduce bulk in the wrist area, particularly useful for riders who wear gauntlet gloves. Additionally, the removal of conventional zippers and closures lessens stress placed on the Ulnar nerve. Relieving this stress improves day-to-day comfort while increasing perceived control feedback.



## TECHMESH™

Techmesh consists of two thin layers of mesh bonded to a structural foam core. This 3D structure allows for improved cooling through the creation of an air pocket between the rider and garment.



## D30®

An intelligent impact protector, D30 is a polymer, not a foam. This allows it to be lighter, slimmer, and more flexible at rest for enhanced fitment. Upon impact, its molecules lock together to absorb more impact.







WHITE  
VIEW ADDITIONAL COLORS ON PAGE 65

## HYPERSPORT LONG GLOVE

### THE UPPER HAND

ICON is always searching for the upper hand; we've found it with the Hypersport glove. The materials and construction of the Hypersport glove have been purposely chosen for their innate abilities to provide this advantage. It all starts with a French cowhide and kangaroo chassis. The French cowhide backhand, supple & strong, provides excellent comfort and flexibility. The kangaroo palm, a hallmark of purpose-built track gloves, provides optimum abrasion resistance and dexterity. Additional panels of digital BattleHide™ goatskin are located in areas of high wear from grips. The mechanical articulation panels, which run the length of each finger, provide excellent flexibility from the very first wear - no break-in period needed. Key construction techniques include ICON's exclusive floating knuckle, which allows for maximum knuckle articulation, and an out-seamed finger box for all day comfort. The Hypersport gloves feature full knuckle coverage from the vented TPU/Polycarbonate knuckle plates. The Unit Fused™ gauntlet also features large external TPU wrap-around coverage and Unit Fused™ reinforced ventilation panels. Dual hook & loop closures allow for a secure fit.

**MATERIAL:** French Cowhide Chassis, Kangaroo palm with BattleHide™ reinforcements.

**DETAILS:** Unit Fused™ gauntlet, Floating knuckle, TPU/Polycarbonate knuckle plates, TPU Finger plates, Wrap-around TPU wrist plate, Articulated fingers, Out-seam finger construction, Hook & loop closures.

SHOWN IN WHITE  
VIEW ADDITIONAL COLORS ON PAGE 65

// S-4X \$180



**WATCH THE VIDEO**

[rideicon.com/videos/hypersport-glove](https://rideicon.com/videos/hypersport-glove)





## HYPERSPORT<sup>™</sup> PANT APEX OUTFITTED

The ICON Hypersport pant is the elite accompaniment to the Hypersport jacket. Like the entire ICON Hypersport series, the Hypersport pant is constructed of multiple materials, each chosen for their unique performance properties. The main chassis is comprised of 1.2-1.4mm TrackSpec<sup>™</sup> leather, stretch Cordura, and nylon lowers. This construction yields an incredibly durable pant while keeping overall weight to a minimum. TPU knee plates and adjustable D30<sup>®</sup> knee impact protectors are coupled with integrated knee and lumbar flex zones for excellent on-bike mobility. Strategic areas of laser-perforated venting and TechMesh<sup>™</sup> paneling help keep everything cool. The tailored fit (no diaper butt here) is accompanied by a ratchet fly closure and dual waist adjustment straps. The Hypersport pant includes an internal waist zipper that connects to either the Hypersport Prime jacket or the Hypersport jacket.

**FIT:** Icon Attack Fit

**MATERIAL:** 1.2-1.4mm TrackSpec<sup>™</sup> Leather Chassis

**PROTECTORS:** D30<sup>®</sup> Impact Protectors - knees

**DETAILS:** TPU Injected knee plates, Integrated flex zones, TechMesh<sup>™</sup> panels, Waist zipper connects to Hypersport<sup>™</sup> series pants, Overboot fitment, Waist adjusters

AVAILABLE IN STEALTH // 28-44 \$235



**WATCH THE VIDEO**

[rideicon.com/videos/hypersport-pant](https://rideicon.com/videos/hypersport-pant)







# CLOVERLEAF

## KNEE // D30® EQUIPPED



In 2002 ICON Motosports re-imagined what a motorcycle back protector could be with the creation of the Field Armor vest. This was a direct result of ICON's core mission: to protect the most at-risk group of riders. The success of this unique mindset has placed more protective equipment on riders than any other motorcycle gear company. Period.

The Cloverleaf Knee was designed with the same mindset. By creating a knee protector designed to be worn on the outside of the pants, the Cloverleaf re-imagines motorcycle armor. Ease of use, comfort, and style are critical elements in all of ICON's protective equipment.

Equipped with a removable CE-certified D30® knee protector, form-fitting leather chassis, and removable nylon knee puck, the Cloverleaf is destined to become an essential part of the modern sportbike uniform.



**WATCH THE VIDEO**

[rideicon.com/videos/cloverleaf](http://rideicon.com/videos/cloverleaf)





BLACK

WHITE

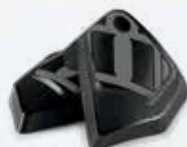
## CLOVERLEAF™ KNEE

**MATERIAL:** 1.2-1.4mm TrackSpec™ Leather Chassis

**PROTECTORS:** D30® Impact Protectors - knees

**DETAILS:** Replaceable nylon knee puck, cut-to-length hook & loop straps, Hydradry™ lining

AVAILABLE IN BLACK AND WHITE // S/M-L/XL \$120  
REPLACEMENT PUCKS AVAILABLE IN  
BLACK/GREY, BLACK, WHITE, HI-VIZ // \$35



BLACK/GREY



WHITE



HI-VIZ



BLACK





# OVERLORD COLLECTION

## THE SPORTBIKE UNIFORM



**WATCH THE VIDEO**

[rideicon.com/videos/overlord-collection](http://rideicon.com/videos/overlord-collection)

Engineered for the Urban Core. Bicyclists, Buses, and Cabbies, oh my, oh the obstacles that wish to reach out and tarnish our fairings. But you can't touch what you can't catch. The Overlord Collection - bold graphics, D30® Impact Protectors, innovative features, attack fit, and street style for the sportbike legion. Come fly with us.







Let the lesser jackets and their mundane riders move a lane over. The Overlord jacket unites the classic swagger of the ICON brand with the most advanced textile jacket in its segment. Featuring a rugged sublimated textile chassis, an attack fit, and a full suite of industry-leading D30 impact protectors (shoulders, elbows, & back), the Overlord jacket understands the core needs of the street focused sportbike rider. Additional rider-centric details include molded neoprene comfort collar, elbow and shoulder flex zones, internal and external zone 3 reinforcements, and streamlined SportCuff™.

SHOWN IN YELLOW  
VIEW ADDITIONAL COLORS ON PAGE 64

// S-4X \$150

**FIT:** Icon Attack Fit. **MATERIAL:** Sublimated Textile Chassis. **LINER:** Insulated SatinCore™ Vest Liner - removable. **PROTECTORS:** D30® Impact Protectors - shoulders, elbows, back. **DETAILS:** Sublimated graphics, Integrated flex zones, TechMesh™ panels, Precurved arms, YKK® zippers, Drop tail, Interior zipper, slash & cargo Pockets, Streamlined SportCuff™, Neoprene Collar, Thumb Loops.



# OVERLORD™ JACKET

LIFE IN THE FAST LANE



YELLOW  
VIEW ADDITIONAL COLORS ON PAGE 64





# OVERLORD™

## STEALTH JACKET

COVERT SPEED



The Overlord Stealth speaks softly, but packs no less a punch. Stripped of its war paint, the Overlord Stealth retains its core attributes: aggressive attack fit, refined pre-curved arm design, and a full D30® Impact Protector package. The Overlord Stealth brings technical engineering and understated styling into one package.

// S-4X \$155

**FIT:** Icon Attack Fit **MATERIAL:** Textile Chassis **LINER:** Insulated SatinCore™ Vest Liner - removable **PROTECTORS:** D30® Impact Protectors - shoulders, elbows, back **DETAILS:** Integrated flex zones, TechMesh™ panels, Pre-curved Arms, YKK® zippers, Drop tail, Interior zipper, slash & cargo pockets, Streamlined SportCuff™, Neoprene collar, Thumb loops







The Overlord Mesh Glove features a combination of materials enlisted for their unique fit and function properties. The chassis is a combination of 3D airmesh, molded neoprene, and sublimated micromesh - providing excellent flow and flexibility. The knuckle TPR badging and thumb overlays provide overt reinforcement, while subtle touches such as the articulated outer finger and integrated pull-tab provide enhanced dexterity and ease of use. A BattleHide™ goatskin palm with ICON superbranding attests to the Overlord's street legitimacy.

SHOWN IN WHITE  
VIEW ADDITIONAL COLORS ON PAGE 65

// S-4X \$39.95

**MATERIAL:** BattleHide™ Goatskin leather palm, Mesh/Neoprene chassis  
**DETAILS:** TPR knuckle, Integrated neoprene wrist closure, Articulated finger gusset, Pre-curved fingers



# OVERLORD™ GLOVE

OPTIMUM VALUE, LEADING DESIGN





# OVERLORD™

## RIDING PANT

### AGGRESSIVE SPORT DENIM



The Overlord Riding Pant represents the next gen in hardcore sport jeans. The fourteen-ounce denim is equipped with the requisite Aramid™ knee and seat paneling, and then significantly steps up the game with molded external TPU knee plastics - the same type as found on roadrace leathers. Internally, D30® knee impact protectors can be positioned in three separate pockets to adjust for rider leg length. The Overlord Riding Pant fit is based on ICON's relaxed fit pattern: not too baggy, not too skinny - just right for aggressive sport riding.

AVAILABLE IN DARK INDIGO // 28-44 \$160

**FIT:** Icon Relaxed Fit. **MATERIAL:** 14oz Denim. **PROTECTORS:** D30® Impact Protectors - knees **DETAILS:** Injected TPU knee plates, Internal Aramid™ knee and seat reinforcement, Stretch knee panels







TM

OVERTLORD

BOOT//GO  
FAST





## OVERLORD™ BOOT//

True confidence starts with the right footwear. The ICON Overlord boot is the demanding choice for denizens of speed. Where other sporting boots are heavy, ours is light, breathable, more dynamic for sport riding. Feel is of utmost importance at the limit, and the Overlord boot delivers while retaining proper reinforcement. The leather upper is combined with overmolded mesh and articulated textiles for optimum performance while maintaining fit and flexibility. The TPU shin, heel and ankle plates, combined with a replaceable toe scuff guard, prepare the Overlord boot for duty at the feet of the aggressive ICON rider.

**MATERIAL:** Leather chassis, Mesh paneling

**CERTIFICATION:** CE Certified EN 13634-2010

**DETAILS:** TPU Injected shin, Heel & ankle plates, Overmolded mesh panels, Replaceable toe scuff plate, Axialmetric steel shank, Shifter interface ribs, Zipper closure



**WATCH THE VIDEO**

[rideicon.com/videos/overlord-boot](http://rideicon.com/videos/overlord-boot)

SHOWN IN WHITE  
VIEW ADDITIONAL COLORS ON PAGE 65

// 8-14 \$175

RIDEICON.COM



WHITE  
VIEW ADDITIONAL COLORS ON PAGE 65



# WOMENS *OVERLORD*<sup>™</sup> COLLECTION



**WATCH THE VIDEO**

[rideicon.com/videos/overlord-collection](http://rideicon.com/videos/overlord-collection)

## Always Fierce, Never Basic

A serious riding jacket for the most serious of female pilots. Like TRL, we've heard your requests, female sportbike nation, and we've answered with a boom. Lighter, better fitting, and thoroughly redesigned, the Women's Overlord collection melds fierce design with signature technology touches.

Redefining "fast, for a girl," the ICON Women's Overlord Collection.







Let the lesser jackets and their mundane riders move a lane over. The Womens Overlord jacket unites the classic swagger of the ICON brand with the most advanced textile jacket in its segment. Featuring a rugged sublimated textile chassis, a womens attack fit, and a full suite of industry-leading D30® Impact Protectors (shoulders, elbows, & back), the Womens Overlord jacket understands the core needs of the street-focused female sportbike rider. Additional rider-centric details include molded neoprene comfort collar, elbow and shoulder flex zones, internal and external zone 3 reinforcements, and streamlined SportCuff™.

SHOWN IN GREY  
VIEW ADDITIONAL COLORS ON PAGE 64

// XS-2X \$150

**FIT:** Womens Icon Attack Fit. **MATERIAL:** Sublimated Textile Chassis. **LINER:** Insulated SatinCore™ Vest Liner - removable. **PROTECTORS:** D30® Impact Protectors - shoulders, elbows, back. **DETAILS:** Sublimated graphics, Integrated flex zones, TechMesh™ panels, Precurved arms, YKK® zippers, Drop tail, Interior zipper, slash & cargo Pockets, Streamlined SportCuff™, Neoprene Collar, Thumb Loops.



## OVERLORD™ WOMENS JACKET



GREY  
VIEW ADDITIONAL COLORS ON PAGE 64





BLUE  
VIEW ADDITIONAL COLORS ON PAGE 65

## OVERLORD™ WOMENS GLOVE

The Womens Overlord Mesh Glove features a combination of materials enlisted for their unique fit and function properties. The chassis is a combination of 3D airmesh, molded neoprene, and sublimated micromesh - providing excellent flow and flex ability. The knuckle TPR badging and thumb overlays provide overt reinforcement, while subtle touches such as the articulated outer finger and integrated pull-tab provide enhanced dexterity and ease of use. A BattleHide™ goatskin palm with ICON superbranding attests to the Overlord's street legitimacy.

SHOWN IN BLUE // VIEW ADDITIONAL COLORS ON PAGE 65  
// XS-2X \$39.95

**MATERIAL:** Mesh/Neoprene chassis, BattleHide™ Goatskin leather palm  
**DETAILS:** TPR knuckle, Integrated neoprene wrist closure, Articulated finger gusset, Pre-curved fingers



WHITE  
VIEW ADDITIONAL COLORS ON PAGE 65

## OVERLORD™ WOMENS BOOT

True confidence starts with the right footwear. The ICON Overlord boot is the demanding choice for denizens of speed. Where other sporting boots are heavy, ours is light, breathable, more dynamic for sport riding. Feel is of utmost importance at the limit, and the Overlord boot delivers while retaining proper reinforcement. The leather upper is combined with Overmolded mesh™ and articulated textiles for optimum performance while maintaining fit and flexibility. The TPU shin, heel and ankle plates, combined with a replaceable toe scuff guard, prepare the Overlord boot for duty at the feet of the aggressive ICON rider.

SHOWN IN WHITE // VIEW ADDITIONAL COLORS ON PAGE 65  
// 5-10 \$175

**MATERIAL:** Leather chassis, Mesh paneling **CERTIFICATION:** CE Certified EN 13634-2010  
**DETAILS:** TPU Injected shin, heel & ankle plates, Overmolded mesh™ panels, Replaceable toe scuff guards, Axialmetric steel shank, Shifter interface ribs, Zipper closure





## SUGAR™ AIRMADA HELMET

Shrinking violet? Wallflower? Not likely. Your ride is as bold as your persona, and your helmet ought to be just as fabulous. The Airmada Sugar is gracefully emblazoned with delicate linework, gothic roses, and a rising sugar queen. Flawless and fierce, and ready to show the world how sweet you are.

**HEADFORM:** Long oval

**VENTING:** Recessed twin channel Supervent™

**SHIELD:** Icon Optics™ fog free shield with Prolock™

**LINER:** Custom Hydradry™ moisture wicking liner

**CERTIFICATION:** World Standard DOT, ECE, SAI\*, SG\*

\* Does not ship with SAI or SG certification sticker unless purchased from an authorised dealer in Australia or Japan

AVAILABLE IN BLACK // 2XS-XL \$250

**WATCH THE VIDEO**

[rideicon.com/videos/airmada-sugar-helmet](https://rideicon.com/videos/airmada-sugar-helmet)





## Oregon will kill you.

Massive wind-swept fires routinely scorch huge swaths of land. Raging class-five rapids crisscross the state like agitated arteries. The constant threat of a magnitude nine earthquake hangs above our head. And our Western border abuts a tsunami-prone Pacific Ocean. Indeed, our home state is as beautiful as it is deadly.

# ELEMENTAL



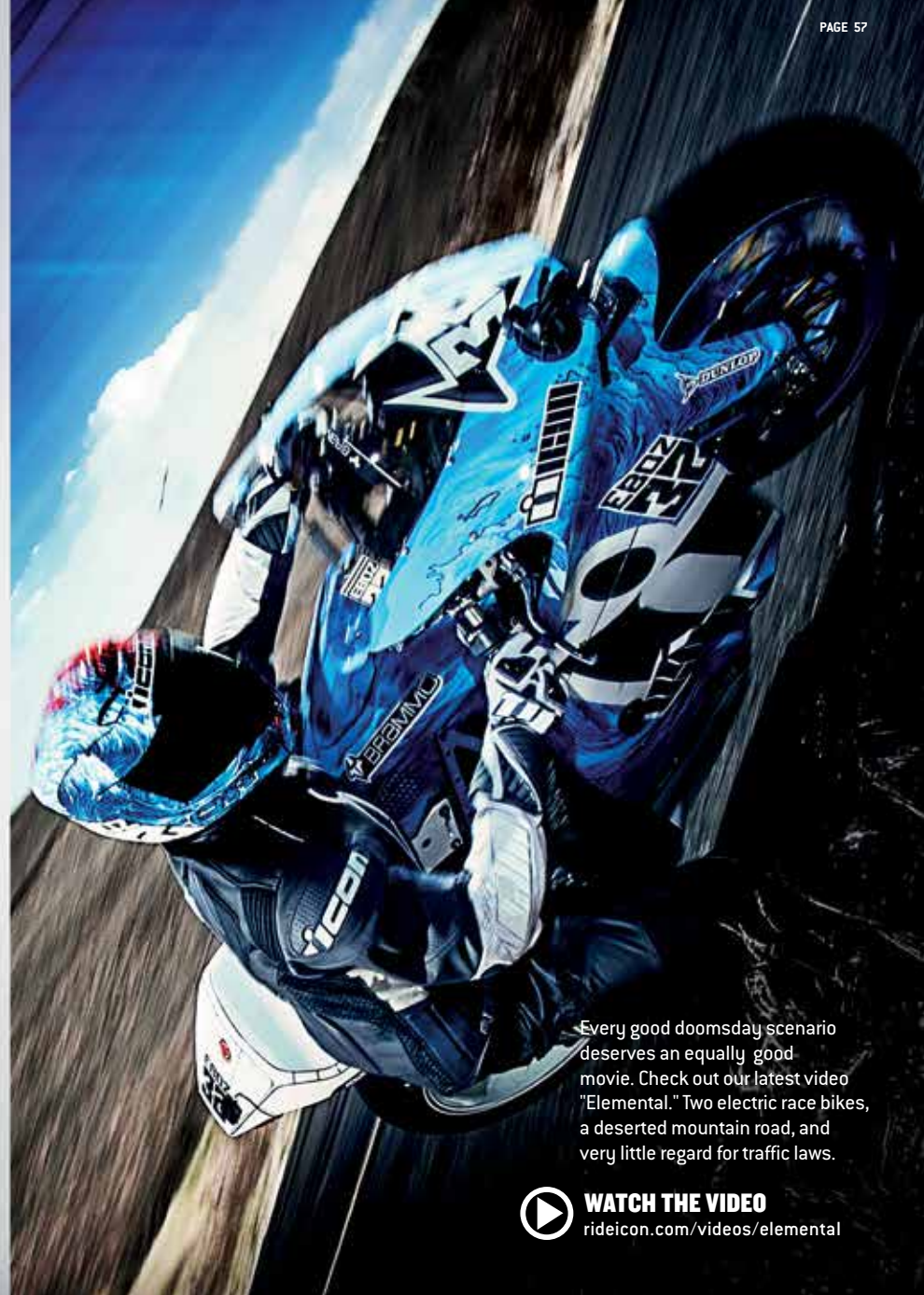
Undeterred by the potential doomsday scenarios of the Beaver State, there exist two of the most innovative motorcycle companies in the market. ICON, operating out of our fortified Northwest Portland bunker complex, and BRAMMO, sequestered in the Southern Oregon city of Ashland. Over the past three years we have combined to produce some of the most dynamic motorcycles on both track and street.

The Tillamook Burn fire raged on and off for almost twenty years. Located between Portland and the coast, this series of fires wiped out over 500 square miles of forest. The ICONxBRAMMO Rage bike, piloted by Shane Turpin, is a flamed reminder of the power of a single spark.

# RAGE







Every good doomsday scenario deserves an equally good movie. Check out our latest video "Elemental." Two electric race bikes, a deserted mountain road, and very little regard for traffic laws.



**WATCH THE VIDEO**

[rideicon.com/videos/elemental](http://rideicon.com/videos/elemental)

# CRUISE

The Cascadia Subduction Zone lies just off the Oregon coastline. The overdue earthquake, and its accompanying tsunami, will obliterate much of Northwestern Oregon, including Portland. The ICDNxBRAMMO Wave bike, piloted by Eric Bostrom, is a turbulent homage to the power of water.





# ELEMENTAL™



## AIRMADA HELMET

Speed is a fragile dichotomy. One must tread the line between rage and restraint; splintering highside or last-lap heroics; to wait for the next bend, or to dive headfirst on the inside line. The Airmada Elemental is both sides of the coin. Play it cool, or come in hot: the choice is yours.

// XS-3X \$255



**WATCH THE VIDEO**

[rideicon.com/videos/elemental-helmet](https://rideicon.com/videos/elemental-helmet)

**HEADFORM:** Long oval

**VENTING:** Recessed twin channel Supervent™

**SHIELD:** Icon Optics™ fog free shield with Prolock™

**LINER:** Custom Hydradry™ moisture wicking liner

**CERTIFICATION:** World Standard DOT, ECE, SAI\*, SG\*

\* Does not ship with SAI or SG certification sticker unless purchased from an authorised dealer in Australia or Japan





# ICON MOTOSPORTS F/W 14 CASUAL COLLECTION



MENS CROSSEYED™ TEE  
BLACK // M-2X \$25



MENS DOUBLE UP™ HOODY  
CHARCOAL // S-3X \$50



WOMENS DOUBLE UP™ HOODY  
GREEN // XS-2X \$50



MENS DOUBLE UP™ TEE  
RED // M-2X \$25



MENS SHEAR™ TEE  
CHARCOAL HEATHER // M-2X \$25



WOMENS HOT CORNER™ TANK  
TURQUOISE // S-2X \$25



MENS SHEAR™ TEE  
NAVY HEATHER // M-2X \$25



MENS DOUBLE UP™ TEE  
BLUE // M-2X \$25



WOMENS DOUBLE UP™ TEE  
PURPLE // S-2X \$25



MENS DOUBLE UP™ TEE  
BLACK // M-2X \$25





## DOUBLE UP™ FLATBILL HAT

Fit: Flex-Fit  
**MATERIAL:** 63% Polyester / 34% Cotton / 3% Spandex  
**DETAILS:** Welded rubber logo

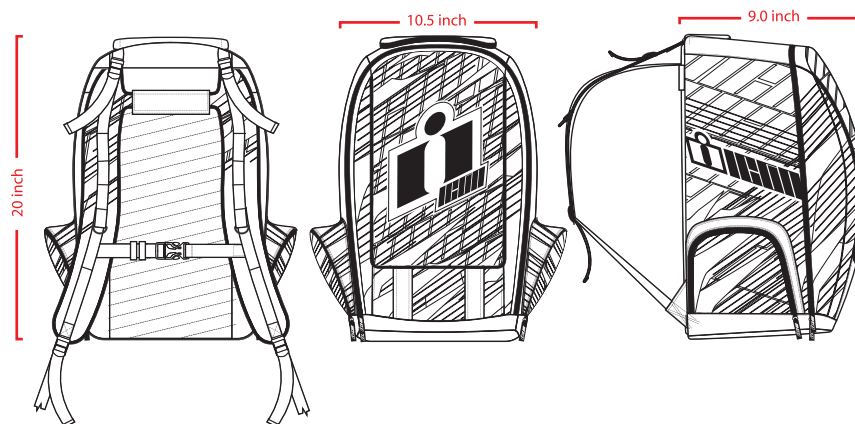
AVAILABLE IN BLACK AND RED // S/M-L/XL \$25



## OLD SKOOL™ BACKPACK

**MATERIAL:** Heavy duty polyester chassis.  
**DETAILS:** ICON exclusive comfort fit chest closure system  
 and laptop compartment holds up to 15-inch laptop

AVAILABLE IN GREY // \$60





# ICON MOTOSPORTS F/W 14 COLLECTION

## HYPERSPORT™ JACKET

// S-2X \$340 // 3X-4X \$390



GLORY RED STEALTH WHITE

## HYPERSPORT PRIME™ JACKET

// S-2X \$375 // 2X-3X \$410



BLUE GREY GREEN RED STEALTH WHITE

## OVERLORD™ JACKET

// S-4X \$150



YELLOW RED HI-VIZ YELLOW ORANGE GREEN BLACK WHITE

## OVERLORD STEALTH™ JACKET

// S-4X \$155



STEALTH

## WOMENS OVERLORD™ JACKET

// XS-2X \$150



GREY PURPLE BLACK

## HYPERSPORT™ SHORT GLOVE

// S-4X \$135



GLORY RED HI-VIZ YELLOW STEALTH WHITE

## HYPERSPORT™ LONG GLOVE

// S-4X \$180



GLORY HI-VIZ YELLOW BLACK WHITE

## OVERLORD™ GLOVE

// S-4X \$39.95



RED BLUE GREEN BLACK WHITE

## WOMENS OVERLORD™ GLOVE

// S-2X \$39.95



BLUE PURPLE BLACK

## OVERLORD™ BOOT

// 8-14 \$175



GREY STEALTH WHITE

## WOMENS OVERLORD™ BOOT

// 5-10 \$175



WHITE STEALTH

## CLOVERLEAF™ KNEE

// S/M-L/XL \$120



WHITE BLACK

## HYPERSPORT™ PANT

// 28-44 \$235



STEALTH

## OVERLORD™ PANT

// 28-44 \$160



DARK INDIGO



# ICON ONE THOUSAND COLLECTION

## THE HOOD™ JACKET

// BLACK S-4X // BROWN S-2X \$600



BROWN BLACK

## BELTWAY™ JACKET

// S-2X \$600 // 3X-4X \$650



BAJA BLUE RESIN BLACK

## AKORP™ JACKET

// S-2X \$515 // 3X-4X \$560



RESIN BLACK

## HELLA™ CHAPS

// S-XL \$165



BLACK

## PREP™ BOOT

MENS // 8-14 \$270



BROWN BLACK

## ELSINORE™ BOOT

MENS // 8-14 \$245  
WOMENS BLACK // 5-10 \$245



BROWN BLACK

## EL BAJO™ BOOT

MENS // 8-14 \$190  
WOMENS BROWN // 5-10 \$190



BROWN BLACK

## TRUANT™ BOOT

// 8-14 \$200



BROWN BLACK

## WOMENS EASTSIDE™ BOOT

// 5-10 \$190



BLACK

## VIGILANTE™ JACKET

// S-2X \$285 // 3X-4X \$300



DARK EARTH BLACK

## VIGILANTE DROPOUT™ JACKET

// S-2X \$300 // 3X-4X \$320



BLACK

## OUTSIDER™ JACKET

// S-2X \$525 // 3X-4X \$575



PURSUIT BLACK

## AIRFRAME STATISTIC™

// XS-2X \$390



BLACK CONSTRUCT

## AIRFRAME SAUVETAGE™

// XS-3X \$375



FLYING LEOPARD

## VARIANT BIG GAME™

// XS-3X \$400



ZEBRA

## OILDALE™ JACKET

// S-2X \$250 // 3X-4X \$260



BROWN BLACK

## ASSOCIATE™ VEST

// S-2X \$400 // 3X-4X \$450



PURSUIT BLACK

## STRYKER BATTLESCAR™ VEST

// S/M-L/XL-2X/3X \$150



BATTLESCAR

## VARIANT BATTLESCAR™

// XS-3X \$400



CHARCOAL CONSTRUCT

## VARIANT HARD LUCK™

// XS-3X \$390



BLACK CONSTRUCT

## AIRMADA CHANTILLY™

// XS-3X \$250



WHITE GLOSS

## WOMENS FAIRLADY™ JACKET

// BLACK XS-2X // BROWN XS-XL \$535



BROWN BLACK

## WOMENS AKORP™ JACKET

// S-XL \$450 // 2X-3X \$490



MISCHIEF RED RESIN BLACK

## WOMENS HELLA 1000™ JACKET

// XS-2X \$275



BROWN BLACK

## AIRMADA HARD LUCK™

// XS-3X \$265



RED GLOSS

## AIRMADA LUCKY TIME™

// XS-3X \$265



BLACK RUBATONE

## ALLIANCE DARK™

// XS-3X \$150



BLACK RUBATONE



# STATISTIC™ TEE

## MENS

**MATERIAL:** 50% Ring Spun Cotton / 50% Polyester  
**DETAILS:** Discharge printed graphic

AVAILABLE IN BURGUNDY // M-2X \$25



## WOMENS

**MATERIAL:** 100% Ring Spun Cotton  
**DETAILS:** Discharge printed graphic

AVAILABLE IN OCEAN BLUE // S-2X \$25

# FEEDBACK™ BEANIE

**Fit:** Droopy Fit  
**MATERIAL:** 100% Acrylic  
**DETAILS:** Embroidered graphic

AVAILABLE IN CHARCOAL HEATHER // ONE SIZE \$20







# EAST SIDE<sup>TM</sup> BOOT

Subtlety and all-weather functionality are unheard of in womens motorcycle footwear. The Eastside boot seeks to change that. Within its fashion-forward chassis lies a waterproof liner, an axialmetric steel shank, and reinforced toe box. Exterior details include leather shinplate, full medial access YKK® zipper, and metal heel plate. The compromise between fashion and function is over.

**MATERIAL:** Top grain leather upper, Internal Waterproof Liner  
**CERTIFICATION:** Tested and certified according to Standard EN 13634:2010

**DETAILS:** Internal Ankle Plate, Axialmetric Steel Shank, Metal/TPU Heel Plate, Side entry YKK® zipper, Shifter interface panel and nubs



AVAILABLE IN BLACK // 5-10 \$190





# FAIR LADY™ GLOVE

A full gauntlet of decadent French cowhide, custom molded knuckles, and tailored for a woman's hand. Governments have been toppled for less. The Fairlady Glove is the handwear of an agent provocateur. Built for the rigors of hardcore motorcycle riding, but with the fierce silhouette defined by the ICON 1000 womens collection. Extensive use of laser detailing, TPU knuckle, integrated flex zones, and floating knuckle construction make this glove equally at home on either the track or the street. If your mission mixes equal parts couture and clandestine, the Fairlady glove will provide the upper hand.

AVAILABLE IN BLACK // XS-XL \$140



**MATERIAL:** French Cow Leather Chassis

**DETAILS:** TPU molded Knuckle, Tactical Black-Oxide Metal Zipper, Perforated backhand and fingers, Hook & loop wrist strap, Pre-curved palm



# FAIR LADY™

## JACKET

Out beyond the perimeter you can operate with impunity. A shadow world where couture intersects concrete. Your missions demand garments built for hardcore riding with enough refinement to play the lead. With its premium, Select Grain leather chassis, internal D30® Impact Protectors, and womens-specific sport fit, the Fairlady is true speed fashion. Contrasting YKK® tactical zippers, flattering princess seams, and low-slung belt line put the femme in your fatale. Ride like your life depends on it...dress accordingly.

SHOWN IN BLACK  
VIEW ADDITIONAL COLORS ON PAGE 30

//BLACK XS-2X// BROWN S-XL \$535

**FIT:** Icon 1000 Womens Sport Fit  
**MATERIAL:** 1.1-1.3mm Select Grain leather chassis  
**LINER:** Insulated SatinCore™ vest liner - removable  
**PROTECTORS:** D30® Impact Protectors - shoulders, elbows, back  
**DETAILS:** Tactical black-oxide metal zippers, Laser perforation venting, Numbered identification plaque, Adjustment straps, Embroidered sleeve logos



BLACK  
ALSO AVAILABLE IN BROWN PAGE 30



# FAIR LADY





# QUARTERMASTER™

## CARDIGAN

Shadow Ops, back-alley skullduggery, or a full-blown blockade are all within the wheelhouse of the Quartermaster Cardigan. The knit poly outer shell is bonded to a 390g fleece lining, providing the look and warmth of wool without the traditional sweater itch. The tall ribbed-knit collar, synthetic elbow & shoulder patches, and handwarmer pockets prove ample companions while standing a long mid-watch. The rubber name badging is Velcro'd in place, should the need arise to cut & run. If your intended destination is in harm's way, make sure your insulation layers are up to the task.

AVAILABLE IN BLACK // S-3X \$125

**MATERIAL:** 100% knit polyester outer shell bonded to 390g fleece lining

**DETAILS:** Rib Knit Collar, Synthetic Leather Shoulders/Elbows, Velcro TPU chest logo, Bicep Pockets with Welded Rubber Trim, Elastic Thumb Loops, Custom Zipper Pulls







TAN



BLACK

# PREP<sup>TM</sup> GLOVE

The iron fist, sheathed in a kangaroo leather glove: the ultimate statement of controlled excess.

Tyranny with a decidedly 80s twist, the Prep glove is both the dancer and the dance. D30® inserts underlie the driving-glove knuckle reveals, providing pillow to the punch. The full kangaroo leather chassis, pre-curved and perf'd, is a luxury that few will ever know. Outer finger gussets feature the unique expansion paneling that only connoisseurs of performance hand wear can truly appreciate. If you have the means, and your tastes demand performance with a certain understated vintage vibe, the Prep glove is your ticket to ride.

AVAILABLE IN BLACK AND TAN

// BLACK S-4X // TAN S-3X \$150

**MATERIAL:** Full kangaroo leather chassis

**DETAILS:** D30® Knuckle Inserts, Expansion finger gussets, Metal badging, Hook & loop closures, Perforated backhand and fingers



*It's tough to argue with vintage sportbike technology when it's thoroughly wrung out and akimbo'd just millimeters short of an amen highside. Coolant spitting out of over-cooked vent tubes as it comes up on "operating temperature." Wide superbike bars slapping wildly from lock to lock, we contemplate our next move - ditch, median, oncoming - so many choices, so little time.*







# PREP<sup>TM</sup> BOOT

Retrograde engineering, a hallmark of the ICON 1000 design ethos. Historically significant silhouettes re-imagined with modern materials and construction techniques. And then given a personal twist of moto-apocalyptic 80s fever dreams. The Prep boot is a prime example of this philosophy. A select top grain leather upper is mated with a full waterproof lining and lugged outsole for massive hits of awesome. Full-length rear zip and calf & heel strapping provide ease of entry and egress. A reinforced toe box, heel, and an axialmetric steel shank do the rest.

**MATERIAL:** 12" top grain leather upper, Internal Waterproof Liner

**CERTIFICATION:** Tested and certified according to Standard EN 13634:2010

**DETAILS:** Axialmetric Steel Shank, Rear entry zip and straps, YKK® zipper, Heat-Pressed leather shifter panel, Heat-Pressed molded leather shin plate

SHOWN IN BLACK  
ALSO AVAILABLE IN BROWN PAGE 31

// 8-14 \$270

ICON1000.COM



BLACK  
ALSO AVAILABLE IN BROWN PAGE 31



RIGHT SIDE GRAPHIC

# STATISTIC™

## AIRFRAME HELMET

The Airframe Statistic is testament to the engineering, design, and execution that ICON has pioneered for over a decade. To showcase this attention to detail, the Airframe Statistic's tri-composite shell features a black construct finish. This treatment peers into the very structure of the helmet, and is unique to each piece.

**HEADFORM:** Medium oval

**VENTING:** Multiple oversized intake and exhaust ports

**SHIELD:** Proshield™ fog free shield with Prolock™

**LINER:** Custom Hydradry™ moisture wicking liner

**CERTIFICATION:** World Standard DOT, ECE, SAI\*, SG\*

\* Does not ship with SAI or SG certification sticker unless purchased from an authorised dealer in Australia or Japan



LEFT SIDE GRAPHIC

AVAILABLE IN BLACK CONSTRUCT FINISH // XS-3X \$390





SHOWN WITH HOOD REMOVED



# THE HOOD™

Your heart may have been an open book when you were young, but times have changed, and your story has grown much darker and much more...complex. This new chapter requires cover and concealment. The simultaneous ability to hide in plain sight or bask in the spotlight. The Hood jacket understands the intricacies of your evolving narrative and stands ready to corroborate. Its impressive 1.1-1.3 Select Grain leather chassis features a removable hood, large front concealment pockets, and mechanical articulation paneling. Internally, a full D30® armor suite (shoulders, elbows, & back) provides hidden reassurance should the plot twist in an unfavorable direction.

SHOWN IN BLACK  
VIEW ADDITIONAL COLORS ON PAGE 30

// BLACK S-4X // BROWN S-2X \$600



**FIT:** Icon 1000 Sport Fit  
**MATERIAL:** 1.1-1.3mm Select Grain Leather Chassis  
**LINER:** Insulated SatinCore™ Vest Liner - removable  
**PROTECTORS:** D30® Impact Protectors - shoulders, elbows, back  
**DETAILS:** Removable leather hood w/custom toggles, Tactical Black-Oxide metal zippers, Mechanical articulation paneling, Laser perforation venting, Numbered identification plaque, Metal badging



BLACK  
ALSO AVAILABLE IN BROWN PAGE 30



*Born of 80s fever dreams, and raised on a steady diet of exotic foreign machinery, the ICON 1000 motoninja continues his inevitable path to the event horizon. Wrapped up in dive bar dramas and banging off the rev limiter in unpatrolled industrial sectors, 1000 pilots are definitely old enough to know better, but young enough not to care.*



Modified fairings and dry-break tank gave the Ninja the sophistication of a monocled endurance racer. A Wiseco big bore kit, K&N filters, ducted Earls oil-cooler, and Racefit pipe increased her mechanized punch. The oversized Roaring Toyz swingarm, equipped with Ohlins TTX race shock, kept things properly stanced in the rear. And while the English origin of both the Avon tyres and EBC rotors was well known, the suspicious domestic origin of the bespoke billet wheels could be neither confirmed nor denied.







ICON 1000

# OLDGHOST 忍者

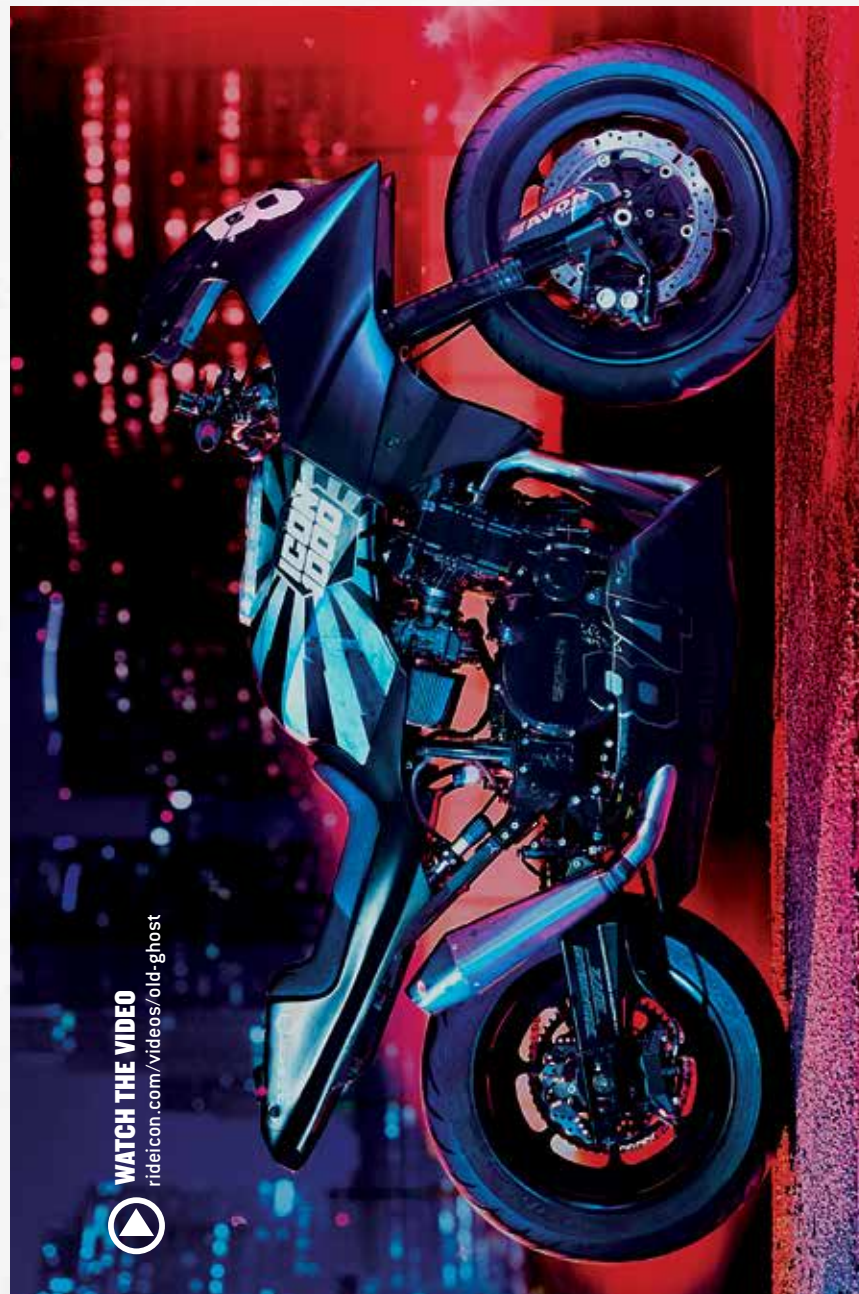
1984 KAWASAKI GPZ900R  
RETROGRADE ENGINEERED BY ICON 1000

She was the first of her bloodline, the original Ninja. Debuted in 1984, the GPZ900r would mark the first salvo in the great Sportbike Wars. Though still a prized commodity in her ancestral home, most GPZs in the Americas had been long since discarded. Like Loomstate denim or pelagic porn, the original Ninja required a discerning taste not found in most Western riders. Luckily, the ICON 1000 garage team had a palate for such Asian delicacies.

The 80s were unkind to any sportbike that failed to make vast improvements with each successive model year. By 1986 the GPZ was overly long in her pronounced fangs. Replaced by the bubble-glassed hammers of the first-gen Gixxers and the glittering boy-racer Hurricanes, the GPZ900r would quickly fade from prominence. Though forgotten to the masses, the Old Ghost will continue to haunt the dark halls of our Slabtown garage for generations to come.



ICON1000.COM



WATCH THE VIDEO

[rideicon.com/videos/old-ghost](https://rideicon.com/videos/old-ghost)







# WAR OF THE SUPERBIKES

It started in the early 80s, a thunderous incoming boom as the first salvo was launched in the War of the Superbikes. The conflict quickly spread, as Ninjas and Gixxers and Interceptors and Hurricanes were unleashed on the frenzied youth of America. Exotic Japanese dreams, within the reach of every red-blooded male. It was mechanized warfare at its finest, and we were happy to enlist.