

A green highway sign with white text is mounted on a grey metal structure. The sign reads "TEAP For Local Agencies". The background shows a road with yellow dashed lines curving into the distance under a blue sky with light clouds.

# TEAP

For Local Agencies



**Missouri's  
Local  
Program**  
*for community  
development*

## Traffic Engineering Assistance Program

Jerica Holtsclaw, P.E.  
MoDOT

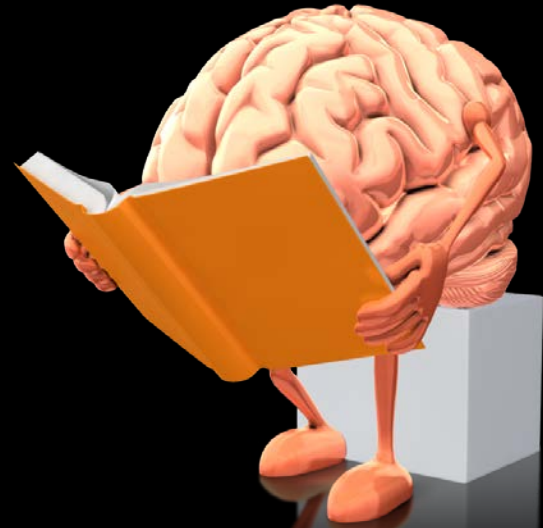
# What is TEAP?

- Competitive Funds
- Used for Traffic Studies
- Yearly Basis

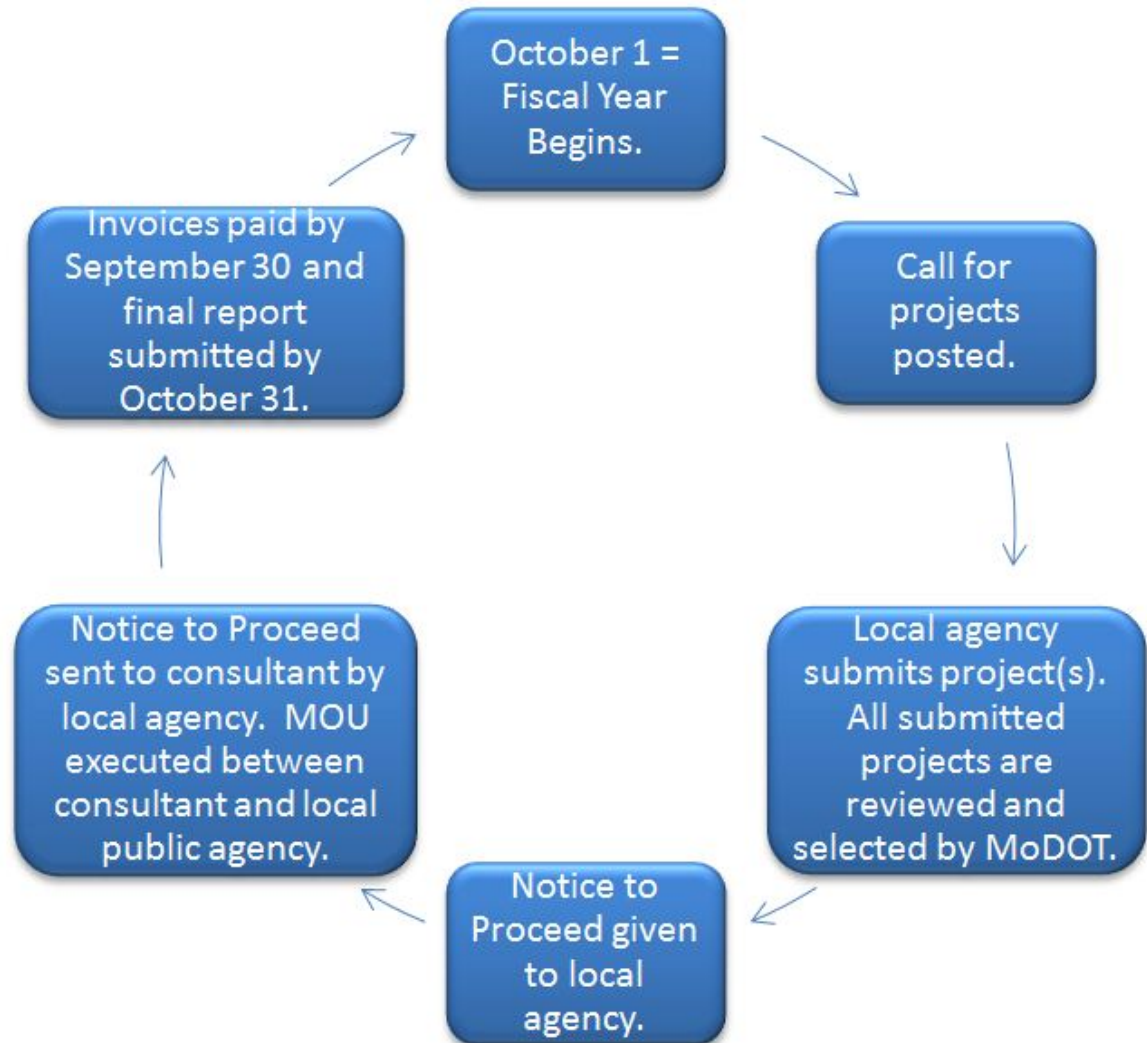


# Why TEAP?

- Expertise
- Funding



# Timeline of TEAP



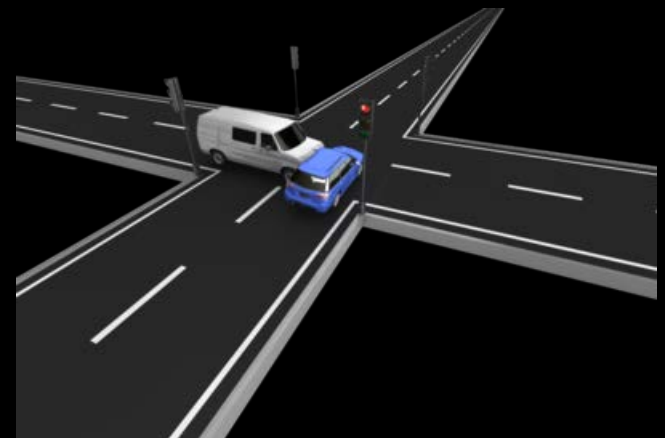
# Eligible Projects?

- Local Roads
- Study/Analysis with future design project
- Not typically “Design”
- Safety



## Scoring Criteria:

- Engineering Resources
- Safety
- Congestion
- Innovation
- Implementation
- Value



**\$70-90K  
Annually**

# Funding



80% Administered by MoDOT

- Highway Safety Funds
- Technology Transfer
- Max \$8,000 per project



20% (or remaining \$) by LPA

- MOU/contract



# On-Call Consultant



<http://www.modot.org/business/lpa/index.htm>



# On-Call Consultant

888-ASK MoDOT (275-6636)

About Us Travelers Business Bidding Plans & Projects Other Transportation News & Information Programs & Services Safety Careers

HOME >> BUSINESS >> LPA >> CONSULTANT INFO

Consultant Info



## Missouri Local Public Agency Program

Home About Us Certification/Training LPA Manual **Consultant Info** Contractor/Bidding Info Funding Info Contact Us

## MoDOT's Consultant Services Webpage

### MoDOT Listings:

- LPA On-Call Consultant List
- Approved Consultant Pre-Qualification List
- LPA Solicitations



### Where do I find?

- Checklists
- Acronyms EPG 136.12.2
- LPA Projects Commonly Used Form
- Helpful Links
- Functional Classification Maps



# On-Call Consultant

On Call Listing - Internet Explorer provided by MoDOT  
 http://www.modot.org/business/lpa/OnCallListing.htm  
 File Edit View Favorites Tools Help  
 Google Search Share More >> Sign In  
 Favorites Design Sharepoint Consultant Information LPA Database MoDOT Phone Book LPA Manual EPG 136 category134 Engineering ... LPA Sharepoint LPA Webpage Intranet Homepage Desktop Downloads Recent Places  
 Plant Tool Kit at Presenter... 136.3 Federal Aid Basics - E... On Call Listing Page Safety Tools

## 2014 - 2017 LPA Consultant On-Call List

- Indicates DBE Firms

| Roadway Design                               | Trails & Sidewalks                           | Construction Inspection                      | Traffic Engineering & TEAP           | Structures                                   |
|--|--|--|--------------------------------------|--|
| ASHMA  | Access Engineering                           | ASHMA  | Access Engineering                   | ASHMA  |
| Access Engineering                           | Affinis                                      | Access Engineering                           | Affinis                              | Affinis                                      |
| Affinis                                      | Alta Planning + Design                       | Affinis                                      | Alfred Benesch & Co                  | Alfred Benesch & Co                          |
| Alfred Benesch & Co                          | AMEC Environment & Infrastructure            | Alfred Benesch & Co                          | Bartlett & West                      | AMEC Environment & Infrastructure            |
| AMEC Environment & Infrastructure            | Anderson Engineering                         | AMEC Environment & Infrastructure            | Bernardin, Lochmueller & Assoc       | Anderson Engineering                         |
| Anderson Engineering                         | Baer Engineering LLC                         | Baer Engineering LLC                         | Burns & McDonnell                    | Bartlett & West                              |
| Baer Engineering LLC                         | Bartlett & West                              | Bartlett & West                              | CJW Transportation Consultants       | Benton & Associates                          |
| Bartlett & West                              | Bax Engineering Co.                          | Benton & Associates                          | Cook, Flatt & Strobel                | Bernardin, Lochmueller & Assoc               |
| Bax Engineering Co.                          | Benton & Associates                          | BFA  | Crawford, Bunte & Brammeier (CBB)    | Bowen Engineering & Surveying                |
| Benton & Associates                          | Bernardin, Lochmueller & Assoc               | Bowen Engineering & Surveying                | Crawford, Murphy & Tilly             | Burns & McDonnell                            |
| Bernardin, Lochmueller & Assoc               | BFA  | Burns & McDonnell                            | TEAP Moon                            | CDG Engineers                                |
| BFA  | Bowen Engineering & Surveying                | CDG Engineers                                | Engineering Design Source Inc (EDSI) | CM Archer Group dba Archer-Elgin Engineering |
| Bowen Engineering & Surveying                | Burns & McDonnell                            | CM Archer Group dba Archer-Elgin Engineering | Garver                               | Cochran (SC Engineering)                     |
| Burns & McDonnell                            | CDG Engineers                                | Cochran (SC Engineering)                     | George Butler Associates (GBA)       | Cook, Flatt & Strobel                        |
| CDG Engineers                                | CJW Transportation Consultants               | Cook, Flatt & Strobel                        | Great River Associates               | Crawford, Murphy & Tilly                     |
| Central MO Professional Services             | CM Archer Group dba Archer-Elgin Engineering | Crawford, Bunte & Brammeier (CBB)            | Hanson Professional Services         | TEAP Moon                                    |
| CH2M Hill                                    | Cochran (SC Engineering)                     | Crawford, Murphy & Tilly                     | HDR Engineering                      | Garver                                       |
| Civil Design Inc                             | Cole & Associates                            | TEAP Moon                                    | HR Green                             | George Butler Associates (GBA)               |
| CJW Transportation Consultants               | Cook, Flatt & Strobel                        | Engineering Design Source Inc (EDSI)         | Iteris                               | Great River Associates                       |
| CM Archer Group dba Archer-Elgin Engineering | Crawford, Bunte & Brammeier (CBB)            | Engineering Surveys and Services             | Koehler Engineering & Land Surveying | Great River Engineering, Inc                 |
| Cochran (SC Engineering)                     | Crawford, Murphy & Tilly                     | Garver                                       | Kuhlmann Design Group                | HDR Engineering                              |
| Cole & Associates                            | TEAP Moon                                    | George Butler Associates (GBA)               | Oates Associates                     | HR Green                                     |
| Cook, Flatt & Strobel                        | Engineering Design Source Inc (EDSI)         | Geotek Corporation                           | Olsson Associates                    | Horner & Shifrin                             |
| Crawford, Bunte & Brammeier (CBB)            | Engineering Surveys and Services             | Great River Associates                       | Poepping, Stone and Bach (PSBA)      | HR Green                                     |
| Crawford, Murphy & Tilly                     | Frontenac Engineering Group                  | Great River Engineering, Inc                 | Shafer, Kline & Warren (SKW)         | Hurst Rosche                                 |
| TEAP Moon                                    | Garver                                       | Grove Design Group                           | Snyder & Assoc                       | HW Lochner                                   |
| Engineering Design Source Inc (EDSI)         | Geotek Corporation                           | HDR Engineering                              | SRF Consulting Group                 | Juneau Associates                            |
| Engineering Surveys and Services             | Great River Associates                       | Horner & Shifrin                             | Terra Engineering Ltd                | Koehler Engineering & Land Surveying         |
| Frontenac Engineering Group                  | Grove Design Group                           | HR Green                                     | Thouvenot, Wade, Moerchen (TWM)      | Kuhlmann Design Group                        |
| Garver                                       | HDR Engineering                              | Hurst Rosche                                 | TranSystems                          | MECO Engineering                             |
| George Butler Associates (GBA)               | HR Green                                     | HW Lochner                                   | TRISK Design Group                   | Oates Associates                             |
| Geotek Corporation                           | Horner & Shifrin                             | Koehler Engineering & Land Surveying         | URS Corp                             | Olsson Associates                            |
| Great River Associates                       | HR Green                                     | Kuhlmann Design Group                        | Wilson & CO                          | Poepping, Stone and Bach (PSBA)              |

# Strategic Highway Safety Plans

- TEAP not for completing SHSP
- TEAP can fund ADDITIONAL studies to the SHSP



# Questions? More Information?



**Missouri's  
Local  
Program**  
*for community  
development*



**Jerica Holtsclaw, P.E.**

MoDOT

Design Support Engineer

573-526-8484

[Jerica.Holtsclaw@modot.mo.gov](mailto:Jerica.Holtsclaw@modot.mo.gov)