

## Lesson 5: Parking Practice

Practice parking in different situations. Never park in front of a driveway, within 10 feet of a fire hydrant, in or near intersections or close to crosswalks or stop signs.

### Straight and Angle Parking


#### Entering the space:

- Signal and slow or stop the vehicle
- Drive forward until the whole parking space is visible
- Turn in, trying to keep equal distance on both sides of the vehicle
- Pull forward until the vehicle is completely in the space

#### Exiting the space:

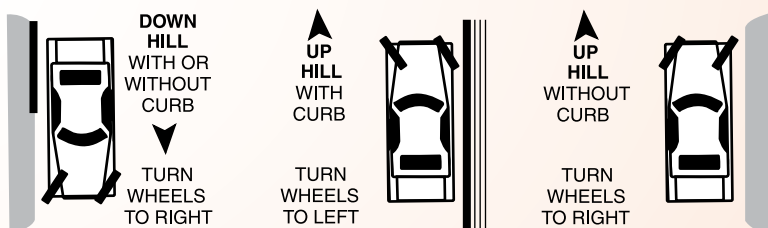
- Check behind the vehicle for traffic and pedestrians
- Begin backing out straight, making sure the vehicle clears the other vehicles
- Begin to turn the steering wheel, checking the front of the vehicle to ensure it clears other vehicles
- Continue to check for traffic and pedestrians
- Straighten the vehicle in the proper lane





### Parking on hills:

- Park close to the curb or if there is no curb, as far away from traffic as possible
- Turn your wheels in the proper direction (see graphic)
- Turn off the motor, putting the car in proper gear
- Set the emergency/parking brake
- Check your rearview mirror for traffic before stepping out



### Reentering traffic:

- Turn on turn signal
- Check for oncoming traffic and pedestrians, including looking in blind spots
- Straighten wheels
- Back slowly, if necessary
- Move forward, turning the steering wheel toward the traffic lane
- Check for oncoming traffic before moving out

## Parallel Parking

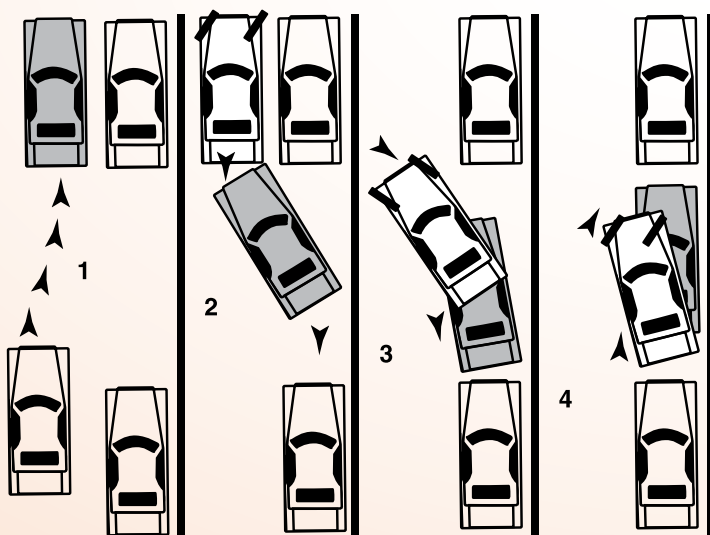
### Entering the space:

- Turn on turn signal
- Check mirrors to make sure that traffic is slowing
- Stop when your steering wheel is even with the steering wheel of the vehicle in front of the parking space
- Back up and turn toward the curb until the vehicle is at a 45-degree angle heading into the parking space
- Turn the steering wheel in the opposite direction and continue backing slowly
- Check the vehicle position behind and ahead, making sure the car does not hit any parked vehicles. Watch for pedestrians stepping off the curb
- When the vehicle is about a foot from the vehicle in back, stop. Center your vehicle by pulling forward

### Exiting the space:

- Turn on turn signal
- Check for oncoming traffic and pedestrians

#### PARALLEL PARKING



- Back up until the vehicle is about a foot away from the vehicle behind you
- Check again for traffic and pedestrians; be sure to check blind spots
- Turn the wheel and slowly pull forward into the driving lane
- Be careful not to cross the centerline of the roadway

## Lesson 5 Checklist

### Parking downhill/uphill

- ☐ Uses turn signal
- ☐ Checks for traffic and pedestrians
- ☐ Parks within about one ft of the curb
- ☐ Turns wheels toward the curb
- ☐ Puts vehicle in park (first gear for standard transmissions)
- ☐ Applies emergency brake

### Parallel Parking

- ☐ Uses turn signal
- ☐ Checks for traffic and pedestrians
- ☐ Correctly positions vehicle in preparation for backing
- ☐ Correctly backs vehicle into parking space
- ☐ Stops before changing direction
- ☐ Correctly centers vehicle

### Exiting the space/reentering traffic

- ☐ Checks available backing distance
- ☐ Uses turn signal
- ☐ Checks for traffic and pedestrians in front and back of vehicle
- ☐ Exits space safely
- ☐ Does not cross center lane

### Angle and 90-degree parking

- ☐ Uses turn signal
- ☐ Moves forward until whole space is in view
- ☐ Turns safely into parking space
- ☐ Pulls entire vehicle into space
- ☐ Leaves enough space between other vehicles