

# SPACE style

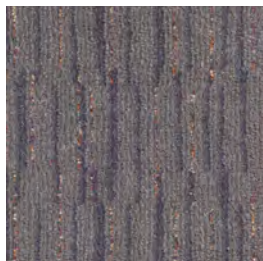
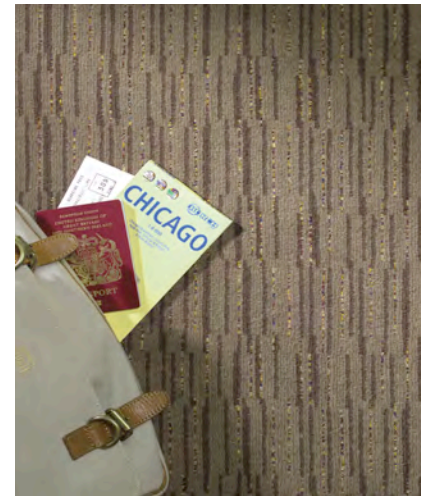
# Cavalier

CARPETS

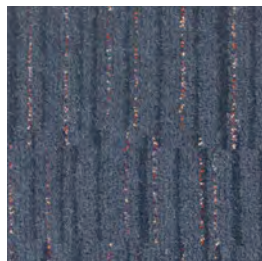
SPECIFICATION

<b>Construction</b>	Graphics Tufted
<b>Pile Content</b>	80% Wool, 20% Nylon
<b>Gauge</b>	31.5 / 10cm, (1/8th)
<b>Yarn Weight</b>	1220g/m <sup>2</sup> , 36oz/yd <sup>2</sup>
<b>Total Finished Weight</b>	2373g/m <sup>2</sup> , 70oz/yd <sup>2</sup>
<b>Suitability</b>	Heavy Contract
<b>Width</b>	4.00m
<b>Pile Height</b>	6.5mm / 0.25"
<b>Backing</b>	Secondary
<b>Tog Rating</b>	0.90
<b>Light Fastness</b>	BS: 1006 (1-8) 6
<b>Rub Fastness</b>	BS: 1006 (1-5) 4-5
<b>Shampoo Colour Fastness</b>	BS: 1006 (1-5) 4-5
<b>Flammability</b>	BS: BS4790 1987(1996) Pass - Low radius of char
<b>IMO Certificate</b> (Marine Equipment Directive 96/98/EC)	II-2/3.40.4 IMO Resolution A 653 (16) II-2/5.3.2.4 IMO Resolution MSC 61 (67) Annex 1 Part 5 II-2/6.2 IMO Resolution MSC 61 (67) Annex 1 Part 2

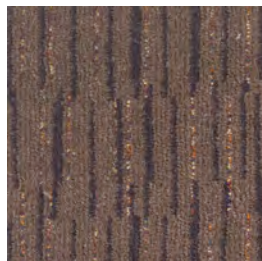
**Product Options** The following options are available for a minimum of 300m<sup>2</sup>:  
 Special Colours  
 Special Widths up to 5m  
 Special Backings (Foam, Impervious & Unitary)



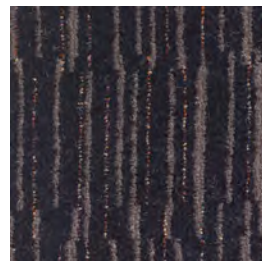
Asteroid



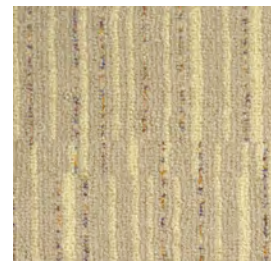
Aurora



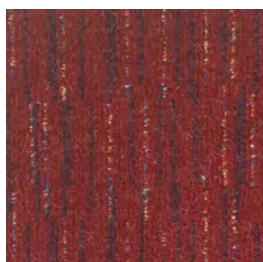
Cosmos



Dark Matter



Galaxy



Meteor



Nebula



Neutrino



Plasma



Solar