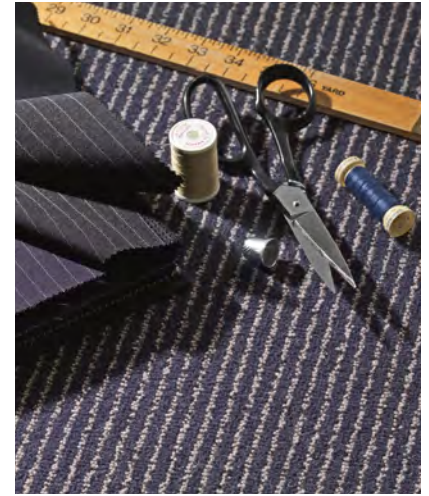


CLASSIC *pinstripe*

Cavalier CARPETS

SPECIFICATION

Construction	Graphics Tufted
Pile Content	80% Wool, 20% Nylon
Gauge	39.4 / 10cm, (1/10th)
Yarn Weight	1220g/m ² , 36oz/yd ²
Total Finished Weight	2373g/m ² , 70oz/yd ²
Suitability	Heavy Contract / Extra Heavy Domestic
Width	4.00m
Pile Height	6.5mm / 0.25"
Backing	Secondary
Tog Rating	0.90
Light Fastness	BS: 1006 (1-8) 6
Rub Fastness	BS: 1006 (1-5) 4-5
Shampoo Colour Fastness	BS: 1006 (1-5) 4-5
Flammability	BS: BS4790 1987(1996) Pass - Low radius of char
IMO Certificate (Marine Equipment Directive 96/98/EC)	II-2/3.40.4 IMO Resolution A 653 (16) II-2/5.3.2.4 IMO Resolution MSC 61 (67) Annex 1 Part 5 II-2/6.2 IMO Resolution MSC 61 (67) Annex 1 Part 2
Product Options	The following options are available for a minimum of 300m ² : Special Colours Special Widths up to 5m Special Backings (Foam, Impervious & Unitary)



Anderson



Fielding



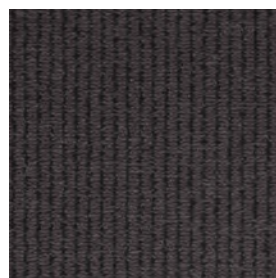
Gieves



Hawkes



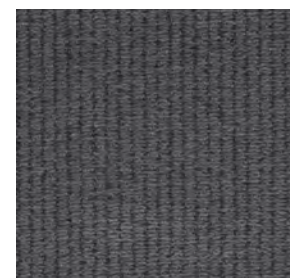
Huntsman



Kilgour



Sexton



Shepherd