

Stain-less Distinctions

Product Specifications

Cavalier

CARPETS

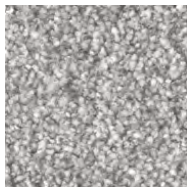
Quality	Supreme	Regal	Sovereign
Construction	Cut Pile Tufted	Cut Pile Tufted	Cut Pile Tufted
Pile Content	100% Polypropylene	100% Polypropylene	100% Polypropylene
Gauge	31.5 / 10cm, (1/8th)	31.5 / 10cm, (1/8th)	31.5 / 10cm, (1/8th)
Yarn Weight	1190g/m ² , 35oz/yd ²	1525g/m ² , 45oz/yd ²	2205g/m ² , 65oz/yd ²
Total Finished Weight	2000g/m ² , 59oz/yd ²	2400g/m ² , 70oz/yd ²	3100g/m ² , 91oz/yd ²
Suitability	General Contract	Heavy Contract	Heavy Contract
Width	4m & 5m	4m & 5m	4m & 5m
Pile Height	7.0mm	9.5mm	14.0mm
Backing	Secondary	Secondary	Secondary
Tog Rating	0.85	1.55	1.75
Light Fastness	BS: 1006(1-8) 5-6	BS: 1006(1-8) 5-6	BS: 1006(1-8) 5-6
Flammability	EN13501-1:2002 - Class Efl S1	EN13501-1:2002 - Class Efl S1	EN13501-1:2002 - Class Efl S1

Standard Colours

Due to variation in raw material bulk dye, matching may vary slightly from the colours shown on the standard shade card.

All specifications subject to normal manufacturing tolerances.

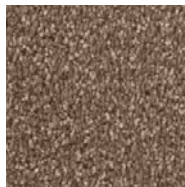
Cut-pile carpets, may show shading/pile reversal. This tendency is inherent in all cut pile fabrics and is not detrimental to the wear of the carpet. It cannot be considered a manufacturing defect. It should be noted and taken into consideration when selecting colours that darker shades camouflage soiling more than lighter shades. This applies particularly to contract installations.



Argent



Arctic



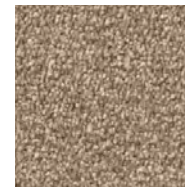
Camel



Capuchin



Dusk



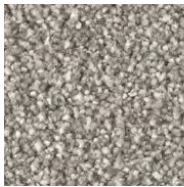
Fawn



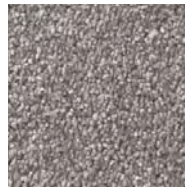
Flax



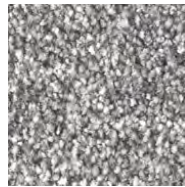
Ilex



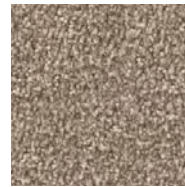
Palladium



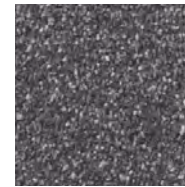
Platinum



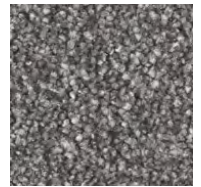
Plover



Sand



Silver



Uniform

- Three Quality Options
- Two Practical Widths
- One Distinctive Stain Resistant Carpet

