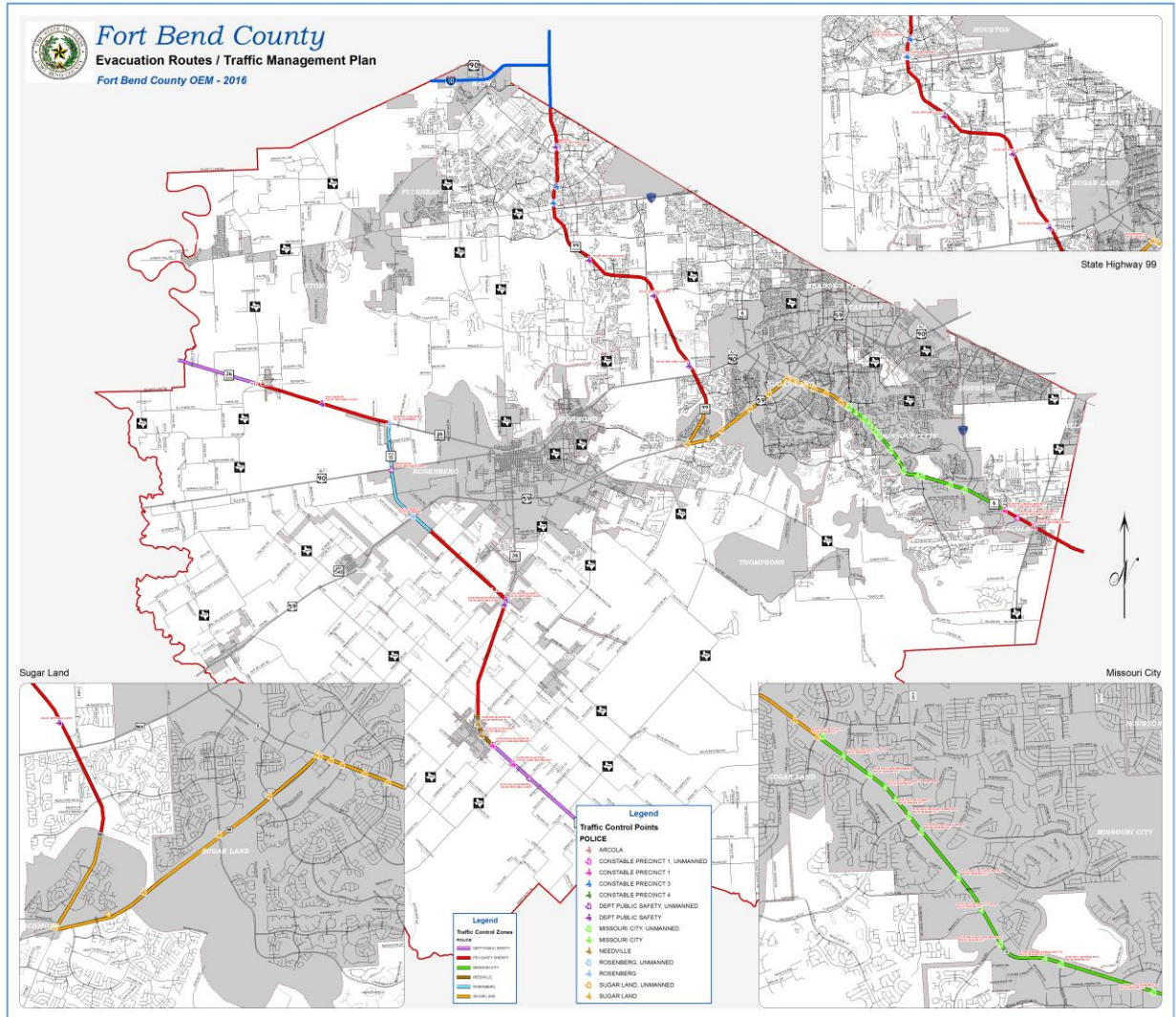


EVACUATION ROUTES/ TRAFFIC MANAGEMENT PLAN

FORT BEND COUNTY

March 2016



Fort Bend County Office of Emergency Management
307 Fort Street
Richmond, TX 77469
(281) 342-6185

Table of Contents
EVACUATION ROUTES/TRAFFIC MANAGEMENT PLAN
Fort Bend County

INTRODUCTION	1
STATE HIGHWAY 6 EVACUATION ROUTE	2
STATE HIGHWAY 36 EVACUATION ROUTE	14

EVACUATION ROUTES / TRAFFIC MANAGEMENT PLAN

FORT BEND COUNTY

March 2015

Because of hurricane threats, Fort Bend County must be prepared to respond to a large-scale evacuation of Brazoria and Galveston counties. The primary evacuation routes through Fort Bend County are State Highway 6 and State Highway 36.

The key to the success of this plan is the communication between the evacuating counties (Brazoria and Galveston) and the Fort Bend County Office of Emergency Management. It is incumbent upon those counties to give sufficient notice of when they will ask their citizens to evacuate. Communication is the key.

The law enforcement agencies in Fort Bend County, in conjunction with the Texas Department of Public Safety (Pierce, Texas) and the Fort Bend County Office of Emergency Management, have prepared this Traffic Management Plan to guide traffic control during any evacuation.

Actual evacuation movement will be controlled by the law enforcement agencies in Fort Bend County. If at all possible, two-way traffic will be maintained on all evacuation routes to allow continued access for emergency vehicles.

For large-scale evacuations where time permits, traffic control devices, such as signs and barricades, will be provided by the Texas Department of Transportation, Fort Bend County Road and Bridge Department, and Municipal Public Works departments upon request. As needed, law enforcement agencies will request wrecker services to clear disabled vehicles from evacuation routes. The key to a successful evacuation is communication between all of the agencies involved. In the event a situation dictates deviation from the plan, it is imperative that the change be reported to Fort Bend County Office of Emergency Management as soon as possible. Fort Bend County Office of Emergency Management will then report that change to all of the agencies involved in the evacuation so that adjustments can be made if necessary.

State Highway 6 Traffic Control Points and Assigned Law Enforcement Summary

FORT BEND COUNTY SHERIFF'S OFFICE

Traffic Control Zones:

**SH 6 Northbound
Brazoria County Line
To Teal Bend Blvd** Monitor SH 6 northbound traffic. Assist motorists as needed and ensure a smooth SH 6 northbound flow.

Resources: 1 Patrol Car
1 Man Fort Bend County Sheriff's Office Unit

**SH 6 Northbound
US 90A to
Harris County Line** Monitor SH 6 northbound traffic. Assist motorists as needed and ensure a smooth SH 6 northbound flow.

Resources: 1 Patrol Car
1 Man Fort Bend County Sheriff's Office Unit

ARCOLA POLICE DEPARTMENT

Traffic Control Point:

**SH 6 Northbound @
521 Eastbound** Establish a traffic control roadblock and close the FM 521 southbound off-ramp from SH 6 (*with DPS*)
-95.4616/29.5074

Resources: 1 Patrol Car
1 Man Arcola Police Department Unit

FORT BEND COUNTY CONSTABLE PRECINCT 1

Traffic Control Points:

SH 6 @ South Post Oak¹ Set traffic signal to flash mode with yellow flash for SH 6 northbound traffic and red flash in all other directions. Provide manual traffic direction as situation requires. Monitor traffic and ensure a smooth SH 6 northbound flow. Intersection will be set and then left unmanned but

¹ Decision to man the intersection will be made by the Fort Bend County Constable Precinct 1.

monitored by Fort Bend County Constable Pct-1 @ Teal Bend Blvd.
-95.4721/29.5132

Resources: None Assigned

SH 6 @ Teal Bend Blvd Set traffic signal to flash mode with yellow flash for SH 6 northbound traffic and red flash in all other directions. Provide manual traffic direction as situation requires. Monitor traffic and ensure a smooth SH 6 northbound flow.
-95.4804/29.5176

Resources: 1 Patrol Car
1 Man Fort Bend County Constable Pct-1 Unit

FORT BEND COUNTY CONSTABLE PRECINCT 2

Provide evacuation route traffic monitoring in Fort Bend County. Maintain ready manpower pool to assist local agencies with point control where needed.

FORT BEND COUNTY CONSTABLE PRECINCT 3

Traffic Control Zone:

SH 99 Entrance Ramp North of Westpark Tollway Block the entrance ramp to SH 99 to prevent traffic from entering SH 99 from the Westpark Tollway. Funnel traffic to Fry Rd.
-95.7746/29.7044

Resources 1 Patrol Car
1 Man Fort Bend County Constable Pct-3 Unit

Fry Rd. @ SH 99 Northbound Provide traffic control for the intersection with priority given to northbound traffic on SH 99 access road onto SH 99 access ramp.
-95.7729/29.7141

Resources 1 Patrol Car
1 Man Fort Bend County Constable Pct-3 Unit

FORT BEND COUNTY CONSTABLE PRECINCT 4

Maintain roving patrols on SH 6 to ensure a smooth traffic flow northbound for evacuation traffic. Monitor traffic to determine the need for additional units.

The City of Missouri City will employ the Digital Message Signs along the SH 6 evacuation route to relay warning and guidance information and aid motorists during the evacuation. Messages will be coordinated through the PIO network to ensure accuracy and consistency with other communicated information. Message signs will advise evacuation traffic that they will turn southbound onto US 59 at SH 6, stay on the access road and take SH 99 (Grand Parkway) north to IH-10 and US 290.

MISSOURI CITY POLICE DEPARTMENT

Traffic Control Zone:

SH 6 Northbound From Teal Bend Blvd To Dulles Ave

Resources:

Monitor SH 6 northbound traffic. Assist motorists as needed and ensure a smooth SH 6 northbound flow.

1 Patrol Car
1 Man Missouri City Police Department Unit

SH 6 Northbound @ Creekmont

Set Traffic signal to flash mode with yellow flash for SH 6 northbound traffic and red flash in all other directions. Provide manual traffic direction, as situation requires. Monitor northbound traffic to ensure a smooth traffic flow.

-95.491744/29.523290

Traffic Control Points:

SH 6 @ Fort Bend Pkwy

Intersection is overpass. Traffic signal mode change is not necessary. Use static traffic device to prevent SH 6 traffic from turning onto Fort Bend Parkway. Monitor traffic and ensure a smooth SH 6 northbound flow.

-95.5064/29.5305

Resources:

1 Patrol Car
1 Man Missouri City Police Department Unit
* Barricades provided by TXDOT to prevent traffic from turning onto Fort Bend Parkway.

SH 6 @ Vicksburg

Set traffic signal to flash mode with yellow flash for SH 6

northbound traffic and red flash in all other directions. Provide manual traffic direction, as situation requires. Monitor traffic and ensure a smooth SH 6 northbound flow.

-95.5159/29.5334

Resources:

* Barricades provided by Missouri City to prevent Vicksburg traffic from turning on to SH 6

SH 6 @ Lake Shore Harbour Blvd/Trammel-Fresno

Set traffic signal to flash mode with yellow flash for SH 6 northbound traffic and red flash in all other directions. Barricade Lake Shore Harbour Blvd and Trammel Fresno @ SH 6. Provide manual traffic direction as situation requires. Monitor traffic and ensure a smooth SH 6 northbound flow. Intersection will be set and then left unmanned but monitored by Missouri City Police Department.

Resources:

* Barricades provided by Missouri City to prevent Lake Shore Harbour and Trammel-Fresno traffic from turning onto SH 6.

SH 6 @ Sienna Christus

Set traffic signal to flash mode with yellow flash for SH 6 northbound traffic and red flash in all other directions. Provide manual traffic direction, as situation requires. Monitor traffic and ensure a smooth SH 6 northbound flow.

-95.531580/29.538265

SH 6 @ Sienna Pkwy

Set traffic signal to flash mode with yellow flash for SH 6 northbound traffic and red flash in all other directions. Provide manual traffic direction, as situation requires. Monitor traffic and ensure a smooth SH 6 northbound flow. Barricade to prevent traffic from using as a bypass.

-95.5345/29.5389

Resources:

1 Patrol Car
1 Man Missouri City Police Department Unit
* Barricades provided by Missouri City

SH 6 @ Sienna Village Shopping Center

Set traffic signal to flash with yellow for SH 6 traffic. Red flash in all other directions. Monitor traffic and ensure a smooth SH 6 northbound flow. Intersection will be set and then unmanned but monitored by Missouri City Police Department.
-95.5378/29.5399

Resources: None Assigned

SH 6 @ Oyster Creek Place²

Set traffic signal to flash mode with yellow flash for SH 6 northbound traffic and red flash in all other directions. Barricade Oyster Creek Place and Sienna Ranch Rd. @ SH 6. Provide manual traffic direction, as situation requires. Monitor traffic and ensure a smooth SH 6 northbound flow. Intersection will be set and then left unmanned but monitored by Missouri City Police Department. **-95.5468/29.5427**

Resources: 1 Patrol Car
1 Man Missouri City Police Department Unit
* Barricades provided by Missouri City to prevent Oyster Creek Place traffic from turning onto SH 6.

SH 6 @ Knights Court Dr.³

Set traffic signal to flash mode with yellow flash for SH 6 northbound traffic and red flash in all other directions. Barricade Knights Court Dr. @ SH 6. Provide manual traffic direction, as situation requires. Monitor traffic and ensure a smooth SH 6 northbound flow. Intersection will be set and then left unmanned but monitored by Missouri City Police Department.
-95.5504/29.5488

Resources: * Barricades provided by Missouri City to prevent Knights Court Drive traffic from turning onto SH 6.

SH 6 @ Lake Olympia

Set traffic signal to flash mode with yellow flash for SH 6 northbound traffic and red flash in all other directions. Provide manual traffic direction, as situation requires. Monitor traffic and ensure a smooth SH 6 northbound flow.
-95.5550/29.5548

² Decision to man the intersection will be made by Missouri City Police Department.

³ Decision to man the intersection will be made by Missouri City Police Department.

Resources:

1 Patrol Car
1 Man Missouri City Police Department Unit

SH 6 @ Glenn Lakes

Set traffic signal to flash mode with yellow flash for SH 6 northbound traffic and red flash in all other directions. Provide manual traffic direction, as situation requires. Monitor traffic and ensure a smooth SH 6 northbound flow.

-95.5623/29.5631

Resources:

1 Patrol Car
1 Man Missouri City Police Department Unit

SH 6 @ FM 1092

Set traffic signal to flash mode with yellow flash for SH 6 northbound traffic and red flash in all other directions. Provide manual traffic direction, as situation requires. Monitor traffic and ensure a smooth SH 6 northbound flow.

-95.5647/29.5660

Resources:

2 Patrol Car
2 Man Missouri City Police Department Unit

SH 6 @ Township Ln.⁴

Set traffic signal to flash mode with yellow flash for SH 6 northbound traffic and red flash in all other directions. Barricade Township Lane @ SH 6. Provide manual traffic direction, as situation requires. Monitor traffic and ensure a smooth SH 6 northbound flow. Intersection will be set and then left unmanned but monitored by Missouri City Police Department.

-95.5674/29.5690

Resources:

* Barricades provided by Missouri City to prevent Township Lane traffic from turning onto SH 6.

SH 6 @ Wal-Mart Shopping Center

Set traffic signal to flash mode with yellow flash for SH 6 northbound traffic and red flash in all other directions. Barricade Wal-Mart shopping Center @ SH6. Provide manual traffic direction as situation requires. Monitor traffic and ensure a smooth SH 6 northbound flow.

-95.5694/29.5712

Resources:

* Barricades provided by Missouri City to prevent Wal-Mart Shopping Center traffic from turning

⁴ Decision to man the intersection will be made by Missouri City Police Department.

onto SH6.

SH 6 @ Riverstone

Set traffic signal to flash mode with yellow flash for SH 6 northbound traffic and red flash in all other directions. Provide manual traffic direction, as situation requires. Monitor traffic and ensure a smooth SH 6 northbound flow.

-95.5724/29.5734

Resources:

1 Patrol Car
1 Man Missouri City Police Department Unit

SH 6 @ Colonial Lakes⁵

Set traffic signal to flash mode with yellow flash for SH 6 northbound traffic and red flash in all other directions. Barricade Colonial Lakes @ SH 6. Provide manual traffic direction, as situation requires. Monitor traffic and ensure a smooth SH 6 northbound flow. Intersection will be set and then left unmanned but monitored by Missouri City Police Department.

-95.5776/29.5770

Resources:

* Barricades provided by Missouri City to prevent Colonial Lakes traffic from turning onto SH 6.

SH 6 @ Dulles Ave

Set traffic signal to flash mode with yellow flash for SH 6 northbound traffic and red flash in all other directions. Provide manual traffic direction, as situation requires. Monitor traffic and ensure a smooth SH 6 northbound flow. *(with Sugar Land)*

-95.5828/29.5806

Resources:

1 Patrol Car
1 Man Missouri City Police Department Unit

SUGAR LAND POLICE DEPARTMENT

Traffic Control Zone:

**SH 6 Northbound
From Dulles Ave
to US 90 A**

Monitor SH 6 northbound traffic. Assist motorists as needed and ensure a smooth SH 6 northbound flow.

Resources:

1 Patrol Car

⁵ Decision to man the intersection will be made by Missouri City Police Department.

1 Man Sugar Land Police Department Unit

Traffic Control Points:

SH 6 @ Dulles Ave

Set traffic signal to flash mode with yellow flash for SH 6 northbound traffic and red flash in all other directions. Provide manual traffic direction, as situation requires. Monitor traffic and ensure a smooth SH 6 northbound flow. *(with Missouri City)*
-95.5818/29.5807

Resources:

1 Patrol Car
1 Man Sugar Land Police Department Unit

SH 6 @ Frost Pass

Set traffic signal to flash mode with yellow flash for SH 6 northbound traffic and red flash in all other directions. Provide manual traffic direction, as situation requires. Monitor traffic and ensure a smooth SH 6 northbound flow.
-95.5873/29.5836

Resources

1 Patrol Car
1 Man Sugar Land Police Department Unit

SH 6 @ Settlers Way

Set traffic signal to flash mode with yellow flash for SH 6 northbound traffic and red flash in all other directions. Provide manual traffic direction, as situation requires. Monitor traffic and ensure a smooth SH 6 northbound flow.
-95.5968/29.5891

Resources:

1 Patrol Car
1 Man Sugar Land Police Department Unit

SH 6 @ Williams Trace Blvd.

Set traffic signal to flash mode with yellow flash for SH 6 northbound traffic and red flash in all other directions. Provide manual traffic direction, as situation requires. Monitor traffic and ensure a smooth SH 6 northbound flow.
-95.6048/29.5920

Resources:

1 Patrol Car
1 Man Sugar Land Police Department Unit

SH 6 @ Grants Lake Blvd.

Set traffic signal to flash mode with yellow flash for SH 6

northbound traffic and red flash in all other directions. Provide manual traffic direction, as situation requires. Monitor traffic and ensure a smooth SH 6 northbound flow.

-95.6106/29.5941

Resources:

1 Patrol Car
1 Man Sugar Land Police Department Unit

SH 6 @ Lexington Blvd.

Set traffic signal to flash mode with yellow flash for SH 6 northbound traffic and red flash in all other directions. Provide manual traffic direction, as situation requires. Monitor traffic and ensure a smooth SH 6 northbound flow.

-95.6163/29.5961

Resources:

1 Patrol Car
1 Man Sugar Land Police Department Unit

SH 6 @ Town Center Blvd.

Set traffic signal to flash mode with yellow flash for SH 6 northbound traffic and red flash in all other directions. Provide manual traffic direction, as situation requires. Monitor traffic and ensure a smooth SH 6 northbound flow.

- 95.6192/29.5972

Resources:

1 Patrol Car
1 Man Sugar Land Police Department Unit

SH 6 @ US 59 Northbound Service Road

Set traffic signal to flash mode with yellow flash for SH 6 northbound traffic and red flash in all other directions. Provide manual traffic direction, as situation requires. Monitor traffic and ensure a smooth SH 6 northbound flow.

-95.6204/29.6003

Resources:

1 Patrol Car
1 Man Sugar Land Police Department Unit

Resources:

1 Patrol Car
1 Man Sugar Land Police Department Unit

US 59 Northbound off-ramp to SH 6 exit	Use static traffic control device to route US 59 northbound traffic onto off-ramp to SH southbound. -95.6220/29.5982
<u>Resources:</u>	* Barricades provided by TXDOT to prevent US 59 traffic from exiting onto SH 6.
US 59 Southbound off-ramp to SH 6 exit	Use static traffic control device to route US 59 southbound traffic onto off-ramp to SH 6 northbound. -95.6229/29.5985
<u>Resources:</u>	* Barricades provided by TXDOT to prevent US 59 traffic from exiting onto SH 6.
US 59 Southbound access road, south of SH 6	City of Sugar Land will post signs designating evacuation lanes and advise evacuation traffic to stay on the access road to SH 99.
US 59 Southbound access road @ First Colony Blvd	Set traffic signal to flash mode with yellow flash for US 59 southbound access road traffic and red flash in all other directions. Provide manual traffic direction as situation requires. Monitor traffic and ensure a smooth southbound access road flow. -95.634866/29.589764
<u>Resources:</u>	1 Patrol Car 1 Man Sugar Land Police Department Unit
US 59 Southbound access road @ University Dr.	Set traffic signal to flash mode with yellow flash for US 59 southbound access road traffic and red flash in all other directions. Provide manual traffic direction as situation requires. Monitor traffic and ensure a smooth southbound access road flow. -95.6501136/29.5815681
<u>Resources:</u>	1 Patrol Car 1 Man Sugar Land Police Department Unit
US 59 Southbound access road @ Brazos River Turnaround	Block the turnaround entrance so that southbound evacuation traffic continues on the access road. -95.6649116/29.5707259
<u>Resources:</u>	1 Patrol Car 1 Man Sugar Land Police Department Unit
US 59 Southbound access	Monitor the traffic flow on the access road and

road @ Summit Creek Dr. determine the need for barricades and or manned patrol unit to prevent evacuation traffic from detouring through the residential area.
-95.6816057/29.5635965

US 59 Southbound access road @ SH 99 East-side intersection Man the traffic control box for the intersection, using the control box, to facilitate the safe movement of evacuation traffic through the intersection onto the northbound lanes of SH 99. Provide manned traffic direction to allow the southbound right two lanes of the access road to turn right onto SH 99.
-95.6816057/29.5635965

Resources: 2 Patrol Cars
2-(1) Man Sugar Land Police Department Units

US 59 Southbound access road @ SH 99 West-side intersection Work in conjunction with the east side intersection unit to maintain a safe traffic flow from SH 99 southbound traffic onto US 59 north and south.
-95.6816057/29.5635965

Resources: 1 Patrol Car
1 Man Sugar Land Police Department Unit

US 59 Northbound access road @ SH 99 West-side intersection Work in conjunction with the other assigned units at the intersection to maintain a safe traffic flow from both SH 99, US 59, and FM 762.
-95.6816057/29.5635965

Resources: 1 Patrol Car
1 Man Sugar Land Police Department Unit

US 59 Northbound Access road @ SH 99 East-side intersection Work in conjunction with the other assigned units at the intersection to maintain a safe traffic flow from both SH 99, US 59 and FM 762.
-95.6816057/29.5635965

Resources: 1 Patrol Car
1 Man Sugar Land Police Department Unit

TEXAS DEPARTMENT OF PUBLIC SAFETY

Traffic Control Point:

**SH 6 Northbound @ FM
521 Westbound**

Establish a traffic control roadblock and close FM 521
westbound off-ramp from SH 6 (*with Arcola*)
-95.4606/29.5077

Resources:

1 Patrol Car
1 Man Texas Highway Patrol Unit

DPS will also provide 3 roving patrols for SH 99 between US 59 and Kingsland Blvd.

State Highway 36 Traffic Control Points and Assigned Law Enforcement Summary

Texas Department of Transportation will set up a dynamic message sign at the county line to advise northbound SH 36 traffic to take Spur 10 to SH 36 north of Rosenberg

TEXAS DEPARTMENT OF PUBLIC SAFETY

Traffic Control Zones:

SH 36 Northbound Brazoria County Line to Needville

Monitor SH 36 northbound traffic. Assist motorists as needed and ensure a smooth SH 36 northbound flow.

Resources:

1 Patrol Car
1 Man Texas Highway Patrol Unit

SH 36 Northbound Orchard to Austin County Line

Monitor SH 36 northbound traffic. Assist motorists as needed and ensure a smooth SH 36 northbound flow.

Resources:

1 Patrol Car
1 Man Texas Highway Patrol Unit

Traffic Control Points:

SH 36 @ Fritzella⁶

Set traffic signal to flash with yellow flash for SH 36 northbound and red flash in all other directions. Provide manual traffic direction, as situation requires. Monitor traffic and ensure a smooth SH 36 northbound flow. Intersection will be set and then unmanned but monitored by Texas Department of Public Safety.
-95.8019/29.3694

Resources:

None Assigned

SH 36 @ Spur 10

Set traffic signal to flash with yellow flash for SH 36 northbound and red flash for southbound SH 36 traffic. Provide manual traffic direction and turn northbound SH 36 evacuation traffic onto Spur 10 northbound toward US 59.
-95814111/29.474071

Resources:

2 Patrol Cars

⁶ Decision to man the intersection will be made by Texas Department of Public Safety.

2 Man Texas Highway Patrol Units
TXDOT or FBC R&B Barricades

SH 36 @ FM 2218

Set traffic signal to flash with yellow flash for SH 36 northbound and red flash in all other directions. Provide manual traffic direction, as situation requires. During peak evacuation period northbound SH 36 bypass traffic will be favored. Monitor traffic and ensure a smooth SH 36 northbound flow.
-95.8078/29.4885

Resources:

1 Patrol Car
1 Man Texas Highway Patrol Unit

SH 36 @ Briarwood Crossing

Set traffic signal to flash with yellow flash for SH 36 northbound and red flash in all other directions. Monitor traffic and ensure a smooth SH 36 northbound flow.
-95.8091/29.4931

FORT BEND COUNTY CONSTABLE PRECINCT 1

Traffic Control Point:

SH 36 @ FM 442

Set traffic signal to flash with yellow flash for SH 36 northbound and red flash in all other directions. Provide manual traffic direction, as situation requires. Monitor traffic and ensure a smooth SH 36 northbound flow.
-95.8121/29.3779

Resources:

1 Patrol Car
1 Man Fort Bend County Constable Pct-1 Unit

SH 36 @ Colony Road

Set traffic signal to flash with yellow flash for SH 36 northbound and red flash in all other directions. Provide manual traffic direction, as situation requires. Monitor traffic and ensure a smooth SH 36 northbound flow.
-95.8258/29.3892

Resources:

1 Patrol Car
1 Man Fort Bend County Constable Pct-1 Unit

NEEDVILLE POLICE DEPARTMENT

Traffic Control Zones:

SH 36 within Needville

Monitor SH 36 northbound traffic. Assist motorists as needed and ensure a smooth SH 36 northbound flow.

Resources:

1 Patrol Car
1 Man Needville Police Department Unit

Traffic Control Point:

SH 36 @ FM 360

Set traffic signal to flash with yellow flash for SH 36 northbound and red flash in all other directions. Provide manual traffic direction, as situation requires. Monitor traffic and ensure a smooth SH 36 northbound flow.

-95.8328/29.3953

Resources:

1 Patrol Car
1 Man Needville Police Department Unit

SH 36 @ FM 1236

Set traffic signal to flash with yellow flash for SH 36 northbound and red flash in all other directions. Provide manual traffic direction, as situation requires. Monitor traffic and ensure a smooth SH 36 northbound flow.

-95.8347/29.4020

Resources:

1 Patrol Car
1 Man Needville Police Department Unit

FORT BEND COUNTY SHERIFF'S OFFICE

Traffic Control Zones:

SH 36 Northbound Needville to Rosenberg Corporate Limits (near Meyer Road)

Monitor SH 36 northbound traffic. Assist motorists as needed and ensure a smooth SH 36 northbound flow.

Resources:

1 Patrol Car
1 Man Fort Bend County Sheriff's Office Unit

SH 36 Northbound from Spur 10 N to Orchard

Monitor SH 36 northbound traffic. Assist motorists as needed and ensure a smooth SH 36 northbound flow.

Resources:

- 1 Patrol Car
- 1 Man Fort Bend County Sheriff's Office Unit

ROSENBERG POLICE DEPARTMENT

Traffic Control Zones:

SH 36, US 59, and Spur 10 within City of Rosenberg Corporate Limits

Monitor SH 36, US 59, and Spur 10 traffic within Rosenberg Corporate Limits. Assist motorists as needed and ensure smooth traffic flow.

Resources:

- 1 Patrol Car
- 1 Man Rosenberg Police Department Unit

Traffic Control Points:

SH 36 @ Band Road

Set traffic signal to flash with yellow flash for SH 36 northbound and red flash in all other directions. Provide manual traffic direction, as situation requires. Monitor traffic and ensure a smooth SH 36 northbound flow.
-95.8078/29.5173

Resources:

Intersection will be set and then unmanned but monitored by Rosenberg Police Department.

SH 36 @ US 59

Set traffic signal to flash with yellow flash for SH 36 northbound and red flash in all other directions. Provide manual traffic direction, as situation requires. Monitor traffic and ensure a smooth SH 36 northbound flow.
-95.8082/29.5316

Resources:

- 1 Patrol Car
- 1 Message Board provided by TXDOT to notify of upcoming force-turn of SH 36 northbound traffic onto US 59 southbound.
- 1 Man Rosenberg Police Department Unit
- * Arrow Board

US 59 Southbound Service Road to US 59 Southbound on-ramp

Use static traffic control device to turn SH 36 traffic onto US 59 southbound ramp.
-95.8255/29.5314

Resources:

- 1 Patrol Car
- 1 Man Rosenberg Police Department Unit
- * Appropriate traffic transition provided by TXDOT to force-turn SH 36 northbound traffic to US 59 Southbound.

US 59 @ Spur 529

Barricades at US 59 northbound median to prevent access to Spur 529 from northbound lanes.

Use static traffic control device to prevent US 59 southbound traffic from turning onto Spur 529 and Spur 529 from entering US 59 (due to location of the Hurricane Evacuation Lane). Use static traffic control device to prevent 90A southbound traffic from entering Spur 529.

-95.8566/29.5344

Resources:

- * Barricades provided by TXDOT to prevent traffic from using US 59 and Spur 529 intersection. US 59 northbound median will be barricaded with TXDOT assets.
- * Barricades provided by TXDOT to block access to Spur 529 and US 90A. US 90A and Spur 529 will be barricaded with TXDOT assets.

US 59 @ Spur 10

Shoulder is striped as Hurricane Evacuation Lane. Use static traffic control device to turn US 59 traffic onto northbound Spur 10 bypass. Flashing red at ramp cannot be changed. Intersection must be manned to ensure a smooth flow of traffic onto Spur 10 northbound. Permanent signage along the roadway will activate to let people know that the evacuation lane is open and available.

-95.8745/29.5242

Resources:

- 1 Patrol Car
- 1 Man Rosenberg Police Department Unit
- 1 Message Board provided by TXDOT to notify people to exit at Spur 10 for the evacuation route.

Spur 10 @ SH 36 North

Flashing red at intersection cannot be changed. Turn off power to traffic signal. Use Advanced Warning signage and temporary stop signs to warn/stop traffic on SH 36. Intersection must be manned to ensure a smooth traffic flow for traffic turning onto SH 36 northbound.

-95.8885/29.5785

Resources:

- 1 Patrol Car
- 1 Man Rosenberg Police Department Unit
- * Advanced Warning Signs provided by TXDOT
- * Temporary Stop Signs provided by TXDOT
- * Barricades provided by TXDOT to close Spur 10 exit to SH 36 southbound.

Spur 10 @ 90A

Barricades will be on location and available to prevent traffic from exiting, but will not be set up unless a problem is identified.

-95.8883/29.5516

Resources:

- * Barricades provided by TXDOT and placed at Spur 10 and Hwy 90A exit.