

Blood, sweat and fears

Avery Reate, a junior in economics, watches intently as he donates blood for the American Red Cross. If it bothers him, he does not show it; this is his fifth time.

The Red Cross comes to UCI twice a year and will return in spring. The organization hopes to collect 140 pints of blood during this visit.



Jim Barrera/New University

Transcript fees may increase

ASUCI President objects to approval process

By Larry Nolan, Staff writer

Objections to a previously approved increase in transcript fees have put the issue on hold until further review by the Office of Financial Planning.

An increase from \$1 to \$3 for additional copies of transcripts was originally approved earlier this month by Executive Vice Chancellor William Lillyman, but has since met with protests from the

Registrar's Office, Assistant Vice Chancellor of Academic Affairs Dennis Galligani and ASUCI President Erik Skaggs.

The main reason for the increase, according to budget officials, is to alleviate the unfunded workload imposed on the Cashier's Office, which processes transcript requests. Though the office collects transcript fees, all of the money is allocated to the Office of the Registrar, including the current fee of \$3

for the first copy.

Skaggs said his main objection to the fee increase is that students were not consulted or notified.

"It looks as if someone tried to slip [this increase] through too quickly, and now it's tied up in bureaucracy," he said.

But according to Senior Budget Analyst Kathleen Hofmann, "consulting students on an increase in

See TRANSCRIPT, page 8

Student action kills sub-wage proposal

By Vonda Kay Vandaveer, Staff writer

College students proved that their voices count when the Industrial Welfare Commission unanimously rejected a sub-minimum wage proposal Dec. 18.

The proposal would have allowed employers to pay full-time students under 21 less than the state minimum wage.

Students sent thousands of letters and attended the three public IWC hearings protesting the proposal.

"There was excellent representation from students. They convinced me that a high percentage of students are independent of family support and are on their own," IWC Vice Chair Muriel Morse said.

The main reason for the proposal, which was made in September, was that students do not need the money they earn for necessities, but use it instead for luxuries and frivolities.

The University of California Student Association was the major proponent for getting student representation at the hearings and to "debunk the image of the rich college student," UCSA President Nadine Bent said.

Matt Bracy, chair of UCSA Student Fees and Services Committee added, "This was a major victory for UCSA and college students. There was a lot of pressure from students and UCSA. It was nice to have such great results."

Had the IWC adopted the sub-minimum wage, students working for minimum wage at 20 hours per

week during the school year and 40 hours per week during the summer would have lost about \$900 per year.

The IWC also voted to increase the minimum wage from \$3.35 to \$4.25 by July 1988, 25 cents higher than the original proposal. The IWC increased their original proposal because the impact on employers by a wage increase was less than originally expected, Morse said.

"I looked at the number of employees paying more than \$4 an hour, and looked at demographics from other states of minimum wage workers and how long they were there," she said. "Seventy-six percent were at minimum wage for less than a year, quickly being given a raise to \$4.25. This showed that the employers would not be hard hit by an increase."

Although the IWC vetoed the sub-minimum wage proposal for students, it did pass a sub-minimum wage of \$3.50 per hour for employees who receive \$60 or more in tips per month.

The California Labor Federation may seek legal action to overturn this decision.

In response to the initial sub-minimum wage proposal, UCSA launched its "Sink the Sub" campaign in October. Bracy, a UCI student opened the campaign with his testimony at the first hearing in Los Angeles Oct. 31.

Letter writing campaigns soliciting support from students and legislators were also very successful, including letters from Assem-

See WAGES, page 8

Professor calls denial of tenure racist

By Maryann Wall, Staff writer

After a six-year struggle with his department to teach Afro-American literature and two years in a controversial tenure review, Lawrence Hogue is crying racism.

Hogue, assistant professor of English and Comparative Literature, one of only three black faculty members in the Humanities department, firmly believes racial discrimination by the University has prevented him from getting a fair chance and a fair review.

Under University of California rules, university officials will not discuss Hogue's particular case.

In the first step of the five-step tenure review process, a department committee meets to evaluate the candidate's teaching, research, university service and professional work. Outside evaluations of the candidate's research are solicited by scholars in the candidate's field.

"It's a fair and thorough process even

though it is an enormous amount of work," Humanities Dean Terence Parsons said.

Although the department usually solicits five or more letters, only four were requested in Hogue's case. According to Parsons, evaluative letters are a burden on those outside the University and the department will request only as many as it feels necessary.

According to Hogue, the department neglected to tell these outside scholars that his work had been accepted for publication.

An Affirmative Action investigation into the issue concluded racial prejudice, confirmed Carla Espinoza, assistant vice chancellor of Affirmative Action. However, the information was re-evaluated and the charges softened to "violation of procedures" on the part of the department.

The Committee on Academic Personnel which also evaluates the file, requested five more letters, citing insufficient evaluation of Hogue's research, Hogue explained.

All five of these letters, in addition to three

of the original four, said his research was excellent, Hogue claims. Despite the favorable reviews of his research by scholars in Afro-American literature, the department gave a negative evaluation of his research.

Parsons explained that "a letter might not have any negative comments, but not say anything good either. You can tell a lot without being in the field what's being said in a letter. Are they taken as gospel? Well, no."

Chancellor Jack Peltason, who makes the final decision on all tenure recommendations, sent the file back to the department with instructions to start over because of insufficient evidence to make a decision, Hogue said.

The second time around, the department again gave a negative evaluation.

Peltason, commenting on tenure cases in general, said "The questions are not: 'is the person good or bad or likeable,' or even: 'are

See HOGUE, page 6



Pat Cooper/New University

Lawrence Hogue

INSIDE



Men mix up standings with upsets

See page 11



Grabbing a piece of your favorite star

See page 17

INDEX

News in Brief.....	4
Science Beat.....	7
Opinion.....	9
Sports.....	11
Jock Shorts.....	12
Ticket.....	17
Coming Up.....	22
UCInk.....	22

Most popular course 1300 scramble to add TV class

By Vonda Kay Vandaveer,
Staff writer

Comparative culture could teach economics something about supply and demand. An estimated 1,300 students are demanding "TV and Culture," but the supply can only accommodate 300.

With 1,100 students on the waiting list, plus others not listed that are trying to add the course, Professor Peter Clecak's class is the most popular one this quarter.

"It's rumored to be easy and fun. It's the easiest upper-division writing course offered," junior Heidi Fridlund said.

Apparently more than 10 percent of the undergraduate population heard this rumor and optimistically went to the class to add it.

"It was kind of chaotic, but it was pretty orderly. There didn't seem to be a lot of bad feeling," senior Peter Kelley said. "They really moved us in and out of there quickly. Plus they put up signs telling us what to do if we weren't registered."

Police were advised of a potential need for crowd control, but there were no problems, Chief Mike Michell said.

"I was shocked when they called me and told there were at least 800 people waiting to add the class," he said. "We were just there if anyone caused any problem."

Clecak was surprised there was such a high demand for his class.

"I don't know quite what to make of it," he said. "I'm pleased

by the demand because it's an important subject. We had no idea of the demand this year. Last year we had 500 request the class. I thought it would be less this year because of the high demand last year. I figured everyone would have taken it by now."

Even with the high demand, there are no immediate plans to add another section of the course, said Dickran Tashjian, director of Comparative Culture.

"My own feeling is it's a good course and should be taught in a different format," he said. "TV is an important aspect of our lives and deserves to be studied in our academy. I believe it will be offered next quarter, but given our restricted resources that's all we can do."

The administration will not push for another course either, said William Parker, associate executive vice chancellor.

"The administration's concern is to ensure courses needed for breadth, major and school requirements are sufficient to meet the demand. In this case, there were upper-division writing classes available in Fine Arts and Humanities," he said. "We can't always provide the resources to make available the most popular classes like TV and Culture."

Meredith Lee, dean of undergraduate students added, "This [high demand] raises the question of the relation between student demand and upper-division writing requirements. I'm looking into that right now but I don't have any answers yet."



William Parker

To help accommodate some of the students, Clecak will offer the class spring quarter.

"We thought long and hard about it," he said. "We don't have enough teaching assistants to meet the demand. And we can't allow more students because the writing component has to be taught in small sections. Next quarter we're going to reevaluate the whole process. We may have to tighten up standards and make the course tougher."

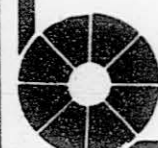
Administration tries their best to offer within reason what the students want and need, Parker said.

"Classes are constantly monitored and continue to grow to meet student demand," Parker said. "But electives aren't given as much concern as breadth courses."

FOOD, WORSHIP & SHARING Protestant Worship

4:00 p.m. Every Sunday

For Further Info, Call:
833-0891 or 675-6275



UCI-INTERFAITH

Located in Engineering Complex
next to ICF Trailer

COLORADO RIVER CANOE TRIP! Spring Break

March 26-19, Saturday - Tuesday



Yes, it's time to start thinking about the Cooperative Outdoor Program's Annual Colorado River Canoe Trip!!!

This four-day trip covers the area from Needles to Lake Havasu. For only \$135! This is a bargain you will never find anywhere else!

Transportation to and from the Colorado River
Food for the entire trip
Canoe rental
Campsite cost

We cover everything for only \$135.00
Get your TICKET from the
Wilderness Warehouse (127 Univ. Center)
Now!!!

For further information call Peter Bowler at 856-5181
in the Student Activities Office.

Chicanos for Creative Medicine

Club improves healthcare of poor

By HoaThi Nguyen

Now that the holiday season is over, efforts to help the poor and homeless seem to have ceased.

This is not necessarily so with the Chicanos for Creative Medicine club.

Founded by a group of Chicano students in the late 1960s, the club is well aware of the need for better healthcare for the poor and is constantly working to serve the underprivileged communities.

The word "creative" in the title symbolizes the hope that members would find more creative methods to help the poor and underprivileged once they become physicians or public health officials.

"The problem is old and has not been dealt with effectively in the past," said Silvia Tran, one of three CCM co-chairs. "There are a lot of

inadequacies in the system like the lack of physicians in lower-income and rural areas, and the lack of funding for low-cost healthcare."

The club hopes to solve these inadequacies.

"CCM is a medium between the students and the communities. It is there to give the students opportunities to serve the communities whether it be signing petitions for revision of the new immigration law or volunteering for the Community Clinic of Orange County," CCM member Gina Robles said.

Aside from working at the clinic, CCM also provides opportunities for its members to do research with professors on campus. Robles has been involved with a malnutrition study in Ensenada for three years. Because telephone communication between Mexico and the United States is next to impossible,

the research team, which includes a number of CCM members, has to make personal trips down there.

Working as closely with the underprivileged as they have, some CCM members develop a strong sense of sympathy for the people who are caught in very desperate situations.

"Sometimes I get really discouraged because I feel like there are so many people out there who need help and I or CCM as a whole cannot possibly make a difference. But I go on because I believe that the moment I stop trying, I stop living," said Frances Chaves, another CCM co-chair.

One of the reasons why CCM has been so popular with more than 60 active members this year and has such a good reputation is the support that exists within the club. Because the club bears ethnicity



Kahn Kim/New University

Nine members of Chicanos for Creative Medicine show their pride in front of the Cross Cultural Center. The club's mission is to help students serve the poor and underprivileged.

in its title, a lot of people think it is exclusively for Chicanos who are also biology majors, but that is not the case.

"The fact that we have members from all races, all nationalities and

all majors shows that we are accepting people for who they are and their potential for the communities—not what they look like," said Bernice Maldonado, CCM co-chair.

UC Inquiry

Should professors have to publish to gain tenure?



Angela Allen
Senior, psychology

"I don't agree. Teaching should be the main focus of the professor and research should come second. You'll wind up with a professor that is just research-oriented instead of one that is a good teacher to the students."



Steve Carll
Junior, composition literature

"It is important for the professor to do research and to have them at the forefront of their fields, but the main focus is to communicate to the students."



Robert Gentry
Associate Dean of Students

"While communication with students is important, research is important as well. It's good scholarship for the students when they can go to a class where the faculty member is at the top of his field...where the professor has discovered something or even written the textbook."



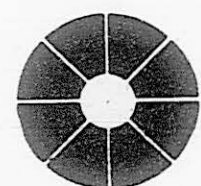
Menaka Peiris
Sophomore, social ecology

"I think the UC schools in general emphasize more on publishing and research than teaching. The more the professor publishes the more his pay is. The incentives are all wrong. The way a professor gains tenure should be based on student response, not on how much he's published."



Devon Rose
Graduate student, English

"I feel that the teaching quality definitely suffers when what is stressed to the professors is not how well they teach, but their research and the number of publications they put out. I think the students begin to fall by the wayside when the professors are pressured to produce this way."



UCI INTERFAITH

Located in Engineering Complex next to ICF Trailer

Ph. 833-0891

WORSHIP

CATHOLIC MASSES

Sunday 9 am, 12 noon, 6:30 pm
M-W-F 12:10 pm, Thursday 9:15 pm

PROTESTANT WORSHIP

Interdenominational Service
Sunday 4:00 pm

LUTHERAN SERVICES

Thursday 12:05, followed by Lunch 12:30
and Video Discussion 1:15

EPISCOPAL EUCHARIST

Tuesday, 8:00 pm
Thursday 12:10 pm

JEWISH SERVICES

Friday 6:30
Bi-monthly during academic year

MUSLIM PRAYERS

Friday 1 pm
Weekly Meetings to be announced

BUDDHIST MEDITATION

Monday 5:30-8:00 pm

BAHA'I FIRESIDES

Tuesday 8-10 pm

CHRISTIAN SCIENCE ORG.

Testimony Meeting Weekly
Wednesday 6:00 pm

STAFF

FR. CRAIG BUTTERS
Catholic Chaplain

REV. DENNIS TEGTMEIER
Lutheran Chaplain

REV. SUSAN KLEIN
Episcopal Chaplain

MARLENE SILVERMAN
Jewish Student Advisor

NANCY JENKS
Administrative Director

(Other Group Leaders)

LEON SMITH
Buddhist

DAWN CAMPBELL
Christian Science

BANDAR ALMOAMMAR
Muslim

FREE COUNSELING
BY APPOINTMENT

POST-SAVE-USE

ACTIVITIES

MONDAY

SEARCH Vietnamese Prayer
Group—6:00 pm
Catholic Prayer Service 7:30 pm

TUESDAY

Episcopal Bible Study 8:00 pm
Shambala Training 6:00 pm

WEDNESDAY

Lutheran Fellowship 7:00 pm
Potluck as announced.
Catholic RCIA Series 7:30 pm

THURSDAY

Noon Free Lunch: All Faiths Welcome
Series on Catholicism 7:30-9:00 pm
Jewish Student Union
Meetings and Rabbini
Discussion 7:00-9:00 pm

FRIDAY

Jewish Shabbat Dinners bi-monthly
6:30 pm

SUNDAY

Newman Club 7:30 pm
and Volleyball

New University

Karen Quon/Editor in Chief
Maribeth Raymond/Managing Editor
Jon Nalick/News Editor
Kirk Wolcott/Sports Editor
Matt Wu/Entertainment Editor
Kourosh Karimkhany/Opinion Editor
Jim Barrera/Photo Editor
Alan Estrada/Graphics Editor
Vonda Kay Vandaveer/Associate News Editor
Gene Kato/Features Editor
Tom Starnes/Associate Sports Editor
Christine Morse/Associate
Entertainment Editor
Larry Nolan/Assistant News Editor
Bryan Mar/Assistant Photo Editor
Rodney Orosco/Assistant Opinion Editor
Bruce Battos/Copy Editor
Wendy Doekott/Training Director

Laurie Jane Brown/Advertising Director
Lisa McLean/Office Manager
Denise Mosher/Student Sales Supervisor
Mike Forrie, Mark Wickens/Senior
Account Executives
Kristen Argo, Peter Montoya/Account
Executives
Karen Cooper/Advertising Assistant
James Leal/Advertising Prod. Mgr.
Teresa Neu/Journal Production Mgr.
Jennifer Kaufman, Michelle Guy/Production
Assistants
Ana Iniguez/Advertising Prod. Asst.
George Spillman/Camera Operator
Steve Wong/Business Assistant
Lilly Chau/Bookkeeping Assistant
Alex Papadimitriou/Circulation Manager
Sam Choi/Computer Operator

University of California, Irvine 92717
3100 Gateway Commons
(714) 856-4285

MORE PIZZA FOR LESS DOUGH

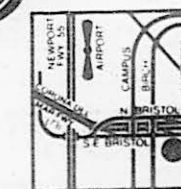
You get 16.4% more pizza at Sgt. Pepperoni's.
So what if our πR^2 .



NEWPORT BEACH

2300 SE BRISTOL
between Campus & Jamboree
852-9500

SGT. PEPPERONI'S pizza



COUPON

NOONER OR LATER

\$1.00 OFF

on "The Special" or any
Custom Sandwich. One Coupon
per special or sandwich.
Not valid for deliveries

Expires 1-31-88

COUPON

DINNER WINNER

\$2.00 OFF

on any whole pizza or \$1.00
off on any half pizza. One
coupon per pizza.
Not valid for deliveries

Expires 1-31-88

News in Brief

Peter the anteater takes a stand

Peter the Anteater officially registered at UCI Jan. 14 in a ceremony preceding the basketball game against Utah State.

The 430-lb., 8 1/2 foot-long bronze statue is a gift from the class of 1987. It was designed by New Mexico Billy Fitzgerald who also created UCLA's Bruin mascot.

The \$50,000 statue is seated on a six-ton base of travertine marble in front of the Bren Events Center.

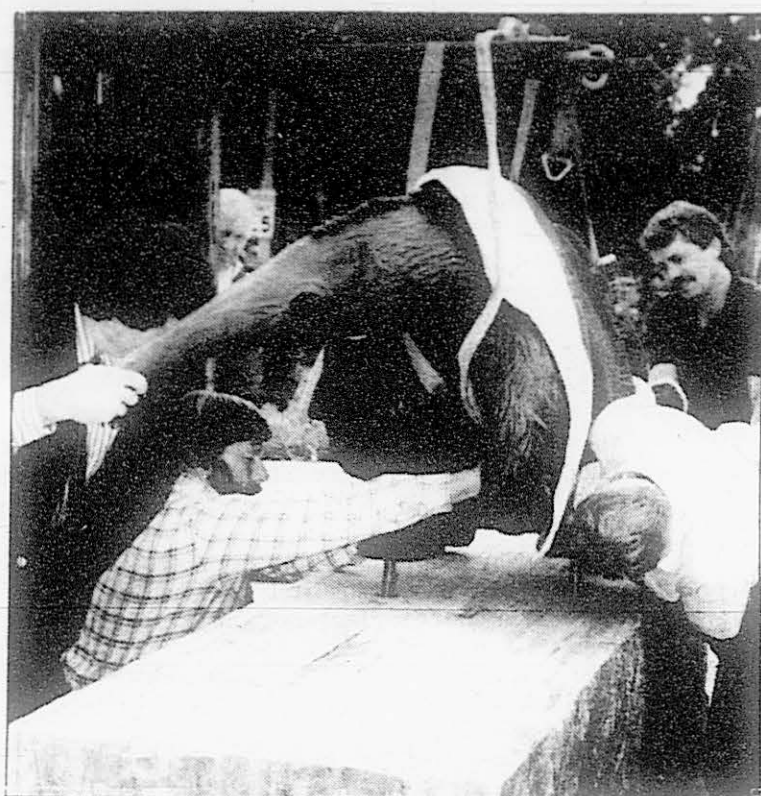
UCI is believed to be the only school in the country whose mascot is an anteater. Its selection was mentioned in *Sports Illustrated* and the Huntley-Brinkley newscast.

ASUCI extended the hours of its shuttle service but it also raised the fare.

The shuttle now runs every 20 minutes from 7 a.m. to 6 p.m. and every hour from 6 p.m. to 10 p.m.

However, extending hours meant raising the fare from 25 cents to 35 cents during the day and to 50 cents after 6 p.m.

"Funding is a major problem. We had to charge extra because of the extended hours. But the new hours should increase evening ridership and



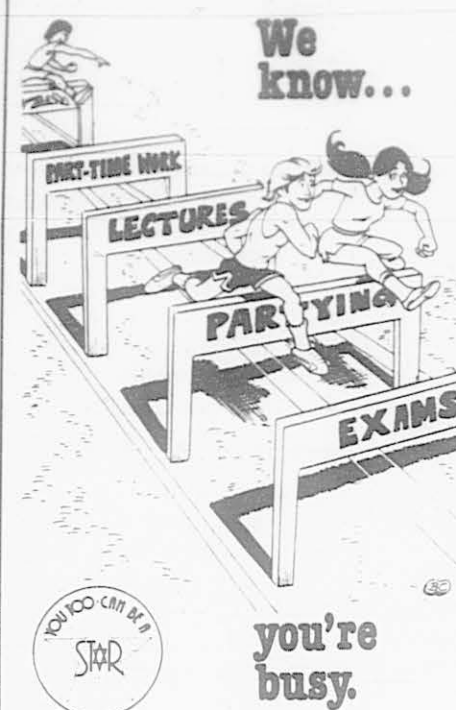
Workmen load the \$50,000 bronze anteater onto its base.

day ridership because students can ride later," said Jim Breslo, vice president of academic services.

Other changes include an added stop on the Blue line at Sapphire and Park, so the shuttle now has three stops on Balboa

Island. ASUCI also eliminated a stop on the Gold line at Cornell and Campus because it was too close to UCI, Breslo said.

ASUCI extended the service following response from a survey they took at the end of fall quarter, Breslo added.

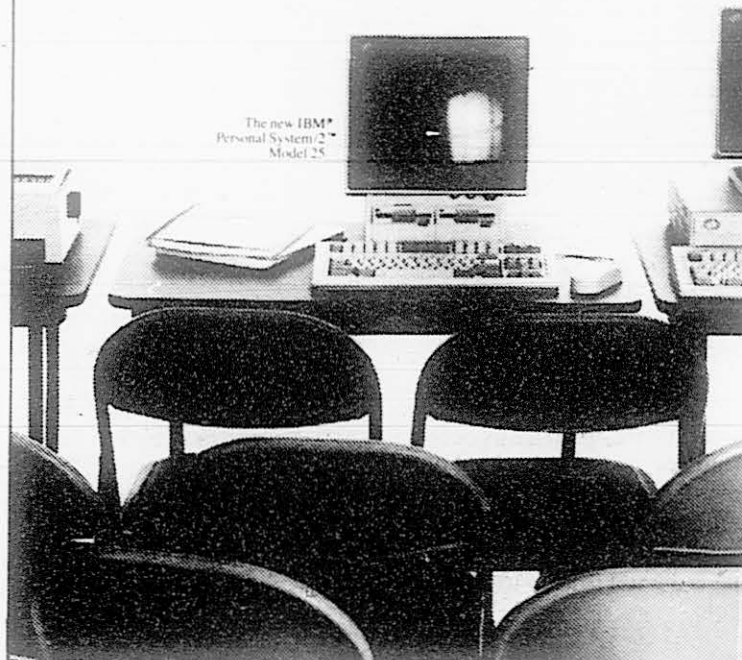


But you're not too busy to get involved. Give a little time and gain the satisfaction of knowing you have impact on the lives of Jews in Israel, in your own community, on your campus and in the many countries around the world.

Your involvement can make the difference. Join our United Jewish Appeal/federation student campaign.

contact:
Karen Bregman
c/o Marlene Silverman
832-3146
833-0891

We're conducting examinations this week. And you can score big with our discounts.



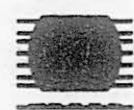
IBM Exam Day is
Wednesday January 20
10 am-5 pm, Heritage Rm. Univ. Ctr.

For once, you're not the one being grilled. During IBM Exam Days, a special demonstration on campus, you can put the new IBM Personal System/2 Model 25 to the test.

You'll get remarkable results—dazzling graphics, clever answers to your multiple choice questions, even essay expertise.

The Model 25 Collegiate is fully prepared for any examination. It comes with a generous 640KB memory, two 3.5" diskette drives and a financial aid package every student can appreciate—a big discount, plus a mouse and lots of software, including Microsoft® Windows 1.04, Write, Paint, Cardfile and IBM DOS 3.3.

And once this test is over, you can order a Collegiate from your IBM Education Product Coordinator on campus. To help improve your own test scores.



Computrends

UCI's Own Computer Store

Microsoft is a registered trademark of the Microsoft Corporation. IBM is a registered trademark and Personal System/2 is a trademark of the International Business Machines Corporation. © IBM Corporation 1987

UC reconstructs audit systems

New committees to safeguard against illegal spending

By Michael Ashcraft, Special from the UCLA Daily Bruin

Still embarrassed by charges of illegal spending at UC Santa Barbara more than a year ago, University of California has launched an overhaul of its internal audit agencies, the UC Regents announced last Thursday.

Former Chancellor Robert Huttenback resigned from the Santa Barbara campus in July 1986 amidst allegations of embezzlement, insurance fraud and tax evasion. He stands trial on those charges and has been permanently replaced.

Meanwhile, the University took steps to guard against further illegal spending by strengthening the financial investigative offices at each of the nine campuses.

Months after the embattled Huttenback's arrest last March, the

University had Arthur Anderson and Company scrutinize and cite auditing operations inadequacies at each campus, the UC President's Office and campus foundations.

Arthur Anderson and Company presented its findings to the Regents in November and the University subsequently formulated the new programs. Plans unveiled Thursday call for the creation of three committees to improve operations.

A major downfall cited by the report is that audit offices at each campus are too independent and do not follow a University-orchestrated systematic review. One of the new committees will develop a University-wide program called the Internal Audit Implementation and Oversight Committee which will be headed by University auditor Robert Tuffnell.

"What we plan to do is to get common audits from all nine cam-

pus that will allow us to compare results and draw some consistent conclusions about overall operations of those functions," Tuffnell said.

A second inadequacy is a lack of coordination between auditing agencies within the University and those outside UC. The second committee will hammer out a program to coordinate those agencies. The External-Internal Audit Coordination Committee will be headed by Joseph Pastrone, UC associate vice president for business and finance.

The third committee, headed by Senior Vice President Ronald Brady, will oversee new developments in reorganizing auditing efforts.

The new auditing structure is expected to be initiated in time for the 1988-89 year but will not be set in stone because further modifications may be needed.

UCSD may start Asian program

By James Pinpin, Special from the UCSD Guardian

UC San Diego may soon start an Asian-American studies program if proposals submitted to the Committee on Educational Policy last fall are approved.

UCSD is currently the only UC school without such a program.

Two proposals, one originating from professor James Lin of the Mathematics Dept. and the other by the student-based Asian-American Studies Committee, request the

institutionalization of an Asian-American studies program and the hiring of a tenured faculty member who would teach the core courses and coordinate the development of the minor program.

The programs will enable the school to hire part-time professors through different departments. As the program develops, some of the courses taught by these lecturers would become regular courses taught by permanent faculty in these departments.

Lin said that there are already

some more qualified UCSD faculty members who are willing to commit part-time to the program.

What the program needs most is to get started, he said, is a tenured faculty member who will fully devote time in the planning and development of the program.

AASC members said that it is time for UCSD to have such a program; particularly since UCSD has a sizeable Asian-American student population and boasts a graduate school of international relations and Pacific Rim studies.

ENGLISH ACCENT IMPROVEMENT

Classes Now Forming
Communicate More Effectively At:
• School
• Your Job
• All Areas of Your Life

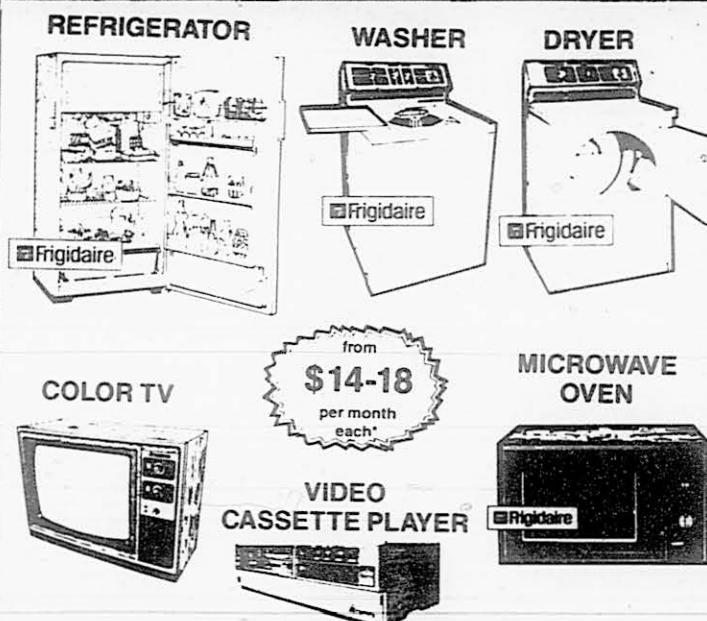
—Tuition Discount Available
—Individual or Group Sessions

DENNIS M. NAPOLI, M.A., CCC
Lic. Speech Pathologist

Offices in
Newport and
Santa Ana

973-0944

RENTALS



from
\$14-18
per month
each

*O.A.C., models/brands may vary

WESTERN TV & Appliance Rentals
ORDER BY PHONE 541-2619
1307 E. EDINGER, SANTA ANA



Something
to Cheer About!

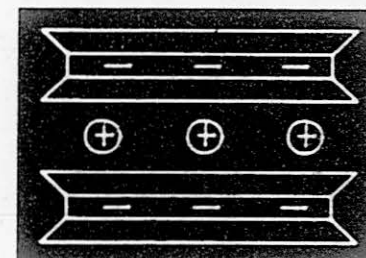
PROFESSIONAL
CHEERLEADING
TRYOUTS!!!!

For the Orange Crush Professional Basketball Club

- Perform at 30 home games
- Special Appearances
- Promotions
- Fun-filled Paid Hobby
- Modeling
- ★ Registration: January 23, 9:00 a.m.
- ★ Estancia High School, 2323 Placentia, Costa Mesa
- ★ Wear Leotards & Tennis Shoes

CALL (714) 661-7117

MATERIALS CHEMISTRY



Michigan State University
Center for
Fundamental Materials Research

CHEMISTRY SENIORS:

You can earn a Ph.D. in Chemistry and do research in a frontier area of Materials Chemistry, including:

- Intercalation Compounds
- Pillared Clays
- Alkalides & Electrides
- New Composites
- Ceramics
- Layered Metals

For more information
on our pioneering program mail the coupon below.

Name _____
Address _____
City _____
State _____ Zip _____
Phone (____) _____
Mail to Prof. T.J. Pinnavaia, Department of Chemistry,
Michigan State University, East Lansing, MI 48824.

MSU is an affirmative action/equal opportunity institution

UNIVERSITY
CENTER

CHILI, CORNBREAD or APPLE PIE
+
YOU

EQUALS FUN & PRIZES

The only variable in this equation is you.

3rd Annual



Jim Fitzgerald
Chili, Cornbread &
Apple Pie Cook-Off

January 28
University Center
Heritage Room
12 noon

ENTRY FORMS AVAILABLE AT THE UNIVERSITY CENTER
INFORMATION DESK. ALL PROCEEDS BENEFIT THE
JIM FITZGERALD SCHOLARSHIP FUND.

A UNIVERSITY CENTER PROGRAM

Graduate, Research Studies restructured

By Michael Rydzynski, Staff writer

The Division of Graduate and Research Studies will undergo a complete reorganization of its structure and services during 1988, said Lewis H. Nosenow, vice chancellor for research and dean of graduate studies.

"Our goal here is to design a structure that will be able to serve this developing university at its current stage and [for] its future," Nosenow said.

Under the new plan, Nosenow will run the division, now called the Office of Research and Graduate Studies. His vice chancellor position has been combined with that of the graduate dean. Both jobs require Nosenow to perform administrative and academic duties.

The research vice chancellor post was created only two years ago, which Nosenow filled last March.

Nosenow's management team will consist of two assistants and three directors. The old system had the graduate dean served by an associate dean, an assistant dean and a manager of contracts and grants.

As graduate dean, Nosenow will have an associate dean of graduate studies. Stuart Krassner will continue to fill this position and his duties will remain the same.

As research vice chancellor, Nosenow will work with an assistant vice chancellor of research, a newly-created post for which he is presently recruiting. The assistant

will oversee UCI's seven organized research units, the planned Irvine research units, the Focused Research Program, other special programs and research policy.

Both the assistant vice chancellor and associate dean are equal positions, answering directly to Nosenow. The old assistant dean post has been abolished, its mostly managerial responsibilities being absorbed by the assistant research vice chancellor and the three directorships in charge of research development, research administration and operations.

Research Development Director David Schetter, the former assistant dean of graduate studies, will oversee center/institute development, patents and conflict-of-interest coordinations, indirect cost rates, university-industry relations, research development planning and special projects.

Walt Selufsky's position, which is now called director of research administration, has been expanded to include the dissemination of projects application information from the federal government, and heading committees reviewing proposals for human and animal subjects research. But because he is retiring in April, Nosenow will have to find a replacement.

The third position is director of operations, currently run by acting director Lynn K. McLeod. As operations director, he will be the chief budget officer, managing financial and facilities planning, administering personnel and supervising the information systems and communications.

The third position is director of operations, currently run by acting director Lynn K. McLeod. As operations director, he will be the chief budget officer, managing financial and facilities planning, administering personnel and supervising the information systems and communications.

HOGUE: 'Suit against UCI is still an option'

Continued from front page

"My [teaching] evaluations are in the top 5 percent in this department," Hogue said, but in the department's evaluation, they "claimed that I had satisfactory, un-spectacular teaching."

Hogue describes a long service record of advising students and serving on various committees, yet was criticized by the department for insufficient service.

"Where's the measuring rod to service to the University?" he asked. "I don't mind the department's recommendation if they'd give me a fair review."

Hogue said his troubles with the department began long before the tenure review process.

"They had no sense of a black as an intellectual. They didn't try to get to know me," Hogue said. "All they knew is I was different."

"I was here four years before they allowed me to teach my first Afro-American literature class. There's no respect for the field," he said.

"It wasn't until I made it an issue in Affirmative Action that I was able to teach the course. That's backwards!"

Steve Barney, acting chair of the English and Comparative Literature department, said, "We do have people in less popular and obscure fields. I've never heard an example of the area of a person's work making it any more or less difficult"

to be considered for promotion.

"I don't believe that either the department or the university believes Afro-American literature is not worthy of study," Parsons added.

Hogue, however, disagrees. "At some point I decided it was not my research. It was political," he said. "It was me."

"I think [racism] is institutional. They genuinely believe American white literature is superior to ethnic literature," he said. "To me it meant all Americans who write."

"To deny tenure," Peltason said, "doesn't mean you've done something wrong or you're bad, or that you're not good in your field. A significant number of people don't get tenure who are fine, for a variety of reasons."

We have an ambition to be in the top 10 institutions in the world, he said. Ideally, we would want people with the potential to be in the top 10 in their field.

If I don't get tenure, "I'm marketable," Hogue says. "I was thinking of a lawsuit and I'll leave that as an option. I was also thinking about writing about it—the difference between public posture and reality of the issue."

"I think it's incredible," he said of the process. "I see the facade of the University of California supporting Affirmative Action. It seems to go completely against the reality of my situation."

"I'm just tired," he said. "If there's justice, I'll get tenure."

Become a
PARA-PROFESSIONAL ACADEMIC ADVISOR
or
THE PROGRAM COORDINATOR
for the

PEER ACADEMIC ADVISING PROGRAM

- Assist students with class scheduling and major selecting
- Gain strong understanding of counseling skills, campus resources and support services
- Learn about academic policy and procedures
- Sharpen and develop your communication and leadership skills

Peer academic advisors work 10 hrs./wk. beginning Sept. '88 through June '89 and earn \$5.92/hr.

The program coordinator works 40 hrs./wk. during the summer of 1988, continues working 10 hrs./wk. during the 1988-1989 academic year, and earns \$6.83/hr.

Applications are now available in all academic units, the Cross Cultural Center and Office of Undergraduate Studies, 256 Administration

**Application Deadline is:
Friday, January 22nd at 5:00pm**

For more information, contact Jennifer Tabola, 856-6987
1987-88

Biological Sciences
Engineering
Fine Arts
GSM (3-2 program & minors)
Humanities



ICS Physical Sciences
Social Ecology
Social Sciences
Teacher Education
Unaffiliated

JOSTENS GOLD RING SALE IS COMING!

\$60 OFF 18K
\$40 OFF 14K
\$20 OFF 10K



See your Jostens representative for the full selection of UCI class ring designs.

JOSTENS
AMERICA'S COLLEGE RING

January 25 - 29
10 am to 2 pm at the University Center

\$50.00 deposit required

UNIVERSITY BOOKSTORE

Meet with your Jostens representative for full details. See our complete ring selection on display in your college bookstore.
87-412 (CP-128-88)

Science Beat

Scientist makes robot with a sense of touch

By Gene Kato, staff writer

The robotic hand in Dr. Michael McCarthy's laboratory can't write, pat, or even wave.

This hand, however, may be a precursor to a field of robotic hands that would be a breakthrough in robotic technology.

McCarthy, and Scott Leaver, his research assistant, have discovered a robotic hand that can actually "feel."

The hand, more resembling a finger, has sensors that can "sense the size and weight of objects, just like our own hands," said McCarthy.

"When we grasp an object, we can sense it even before we pick it up. When we pick up an egg, or a lightbulb, we know exactly how much pressure to exert without crushing it. In time, ours hopefully will have this capability," said Leaver holding up the hand proudly.

However, this kind of hand-holding does not come without much hard work.

The development of the hand began at the University of Pennsylvania over two years ago when Leaver was writing his master's thesis for McCarthy.

"The mechanical design of the finger enables it to move similarly to the way the human finger moves. There are three joints but only two motors," said Leaver.

The costs in producing the fingers have also been relatively low. Each finger costs approximately \$1500 to make, whereas heavier and larger fingers would cost up to \$100,000.

"We now have two fingers," said McCarthy, "but by the end of the week we should have at least six of them."

The immediate applications for fingers such as these include uses in research.

"In the future however," said Leaver, "hands such as these could be used in hazardous areas such as in space, nuclear environments, undersea, and in working with dangerous chemicals."

How about the possibility of prosthetics?

"That's something that won't be around for a while," said McCarthy.

"It is easier for a person to drive a car than the car itself to run," he explained, "the physical mechanics are very difficult. The use of robotics in prosthetics is a long way off."

"I'm very happy with it," said McCarthy. "Even if it does fail, we can still learn from it, redesign it, and do even better."



Scott Leaver, a mechanical engineer, displays a mechanical finger which can actually "feel." It can sense the size and weight of such objects as an egg, and may be a precursor to robotic hands.

Your parents walked miles in the snow to get to school. They still got there faster.



No matter what sob story your parents are telling you, it can hardly compare to the hassles of getting to college these days.

Although you can't miraculously get rid of the heavy traffic, you can avoid it.

All you have to do is ride the bus. Then you can sit back, relax and watch as cars and people fume.

But that's only the beginning.

When you ride the bus, you'll never get dizzy looking for a parking spot. You'll save wear and tear on your car. And your nerves. And you can study biology while your friends are studying brake lights.

OCTD also sells a bus pass that's good for unlimited bus transportation throughout Orange County. And when you carry a pass, you won't have to carry around a pocketful of change. Just call 636-RIDE to find the nearest

location where you can get your OCTD pass.

We also have a Trip Planner that'll show you the best route to take to college. Along with a bus schedule that'll get you there with time to spare.

In the meantime, use the coupon below and take a ride on us.

By the way, there is one other advantage to taking the bus in Orange County. It'll never get stuck in snow.

One Free Ride.

Present coupon to driver when boarding the bus. Offer good for one free trip on any OCTD local bus route. Not valid on Dial-A-Ride or express routes 701 or 464.

One coupon per person, per ride. Not redeemable for cash. Offer expires March 15, 1988.



"Good service.
good coverage.
good price."
That's
State Farm
insurance."

Stan Jones
854-2233

4199 Campus Dr., #250
in the University Tower

Like a good neighbor,
State Farm is there.



State Farm Insurance Companies
Home Offices: Bloomington, Illinois

WAGES: Student workers 'inferior'

Continued from front page

bly members Tom Hannigan of Davis, Tom Bates of Berkeley and Byron Sher of Palo Alto.

Supporters of the proposal who testified before the IWC attempted

to perpetuate the image of the student as an inferior worker.

At the Sacramento hearing, representatives from Kentucky Fried Chicken called students "lazy" and "ignorant," not knowing "the right end of the broom to use."

Also, the California Restaurant

Association wrote a letter to the Assembly Labor and Employment Committee that "it has long been recognized that students could be paid a lower rate, in that such employees usually are not as productive as experienced or older employees."

TRANSCRIPT: Fee hike questioned

Continued from front page

student fees would be like the grocery stores consulting customers about an increase in food prices." She said no one wants to pay more than they already are for something.

Assistant Vice Chancellor Roy Dormaier said students weren't consulted because "we assumed they were opposed."

Hofmann added that students were not notified of the increase because it has never been implemented and is still being reviewed. Skaggs admitted that "there's nothing in university policy that prohibits this type of action. The Chancellor [Jack Peltason] is God."

But, he also called it "a break in normal procedure. It's a courtesy to at least mention to student representatives that a fee increase is being considered."

In a Jan. 11 letter to Lillyman, Skaggs also objected to what he called "a one-day approval" of the increase, suggesting that it was recommended and approved the same day.

Dormaier said, "Contrary to Mr. Skaggs's letter, it [the increase] was not a one-day approval. It had been considered for a month."

Skaggs also questioned whether an increase is even necessary. Financial Planning Office officials contend that the workload for transcript processing has increased substantially and now represents 16 percent of the total transactions performed by the Cashier's Office. They also said that transcript processing is labor-intensive because it is all done by hand.

In his letter, Skaggs countered, "Turning around to look in a file box is about as 'labor-intensive' as bending over to tie your shoelaces."

But Management Services Officer Sharon McManus explained that transcript processing is lengthy, especially when students make requests by mail. She also noted that part of the process consists of looking up invoices to check if students have any outstanding debts on campus before transcript

requests are approved.

Hofmann said that much of this process could be shortened if automated on a database, which the \$2 increase would provide for.

One of the main concerns of the Registrar's Office is that there be a direct relationship between university services and charges.

"It [the current fee] is about as much as we should be charging given the service, especially since the university has a monopoly on this service," Associate Registrar Richard Everman said.

He added, "There are legitimate charges which should be passed onto students," such as the cost to verify a student's full- or part-time status.

He also suggested that the cost of checking invoices be passed on to those students who have outstanding debts, rather than all students who request transcripts.

The fee increase is not being

reconsidered because of objections by Skaggs and the Office of the Registrar, but because of a request by Galligani who has promised to provide "additional information" this week, Dormaier said.

What exactly that information might be is still unclear. Galligani was unavailable last week for comment.

Dormaier said Skaggs' objections came after the issue was already on hold, and those by the Registrar's Office were already considered when Lillyman first approved the fee increase.

Dormaier also speculated that Galligani may be representing the Office of the Registrar with more or similar objections already considered. Once the Office of Financial Planning receives the information from Galligani, it will make another recommendation to Lillyman, who has final authority on transcript fees.

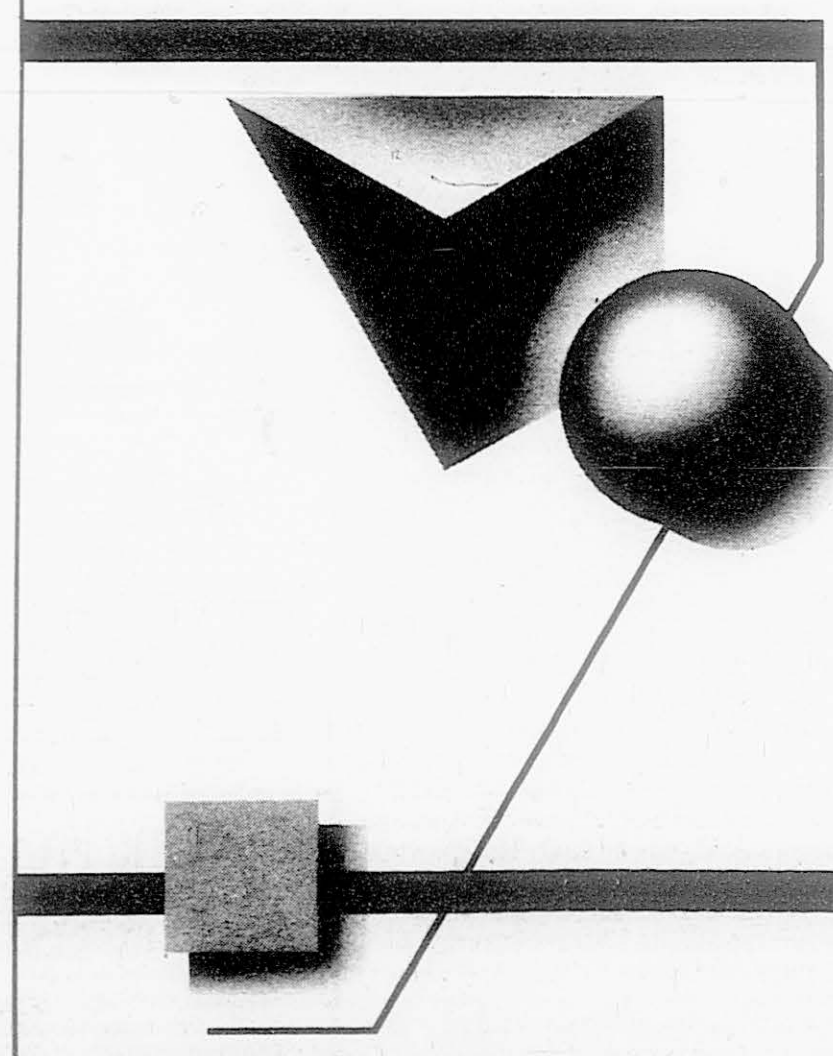
Sabina's Italian Restaurant
50% off
Second Dinner of Equal or Lesser Value
With This Coupon
(Coupon expires Jan. 25, 1988)
Open 5-9:30 p.m.
731-9346 • 4900 Irvine Blvd., Irvine
Located in Northwood Town Center

Alpha Phi
UC IRVINE
... is coming your way ...
Help create a new sorority for UCI ...

- ★ Exciting Social Activities
- ★ Special Bonds of Sisterhood
- ★ Campus and Community Involvement
- ★ Leadership and Personal Skills Development

Alpha Phi Rush
January 25-28, 1988

You've learned the limits of technology, now start breaking them.



The limits of technology are opportunities for growth at Logicon. Consider joining one of our talented teams, explore your personal potential, and push beyond the limits of today's technology in space, missile, aeronautical and mission planning systems.

At Logicon, we are leaders in systems and software engineering and we provide high technology services to the government. If you are about to graduate in Engineering, Math, Computer Science or Physics, consider joining us in supporting some of the highest priority programs in the country. We are headquartered in San Pedro, California and have additional offices in Utah, Ohio, Rhode Island, Massachusetts, Colorado and Washington, D.C.

Visit with our Representatives on your campus:
Tues., February 9, 1988

We are looking forward to meeting with you. But if you are unable to attend, please send your resume to:
Logicon,
255 W. 5th Street, Dept. UCI
San Pedro, CA 90733
U.S. Citizenship required for most positions
Equal Opportunity Employer M/F/H/V

LOGICON

Tenure review

After teaching at the university for six years, an assistant professor is eligible for tenure. A tenure review committee evaluates each candidate on the basis of teaching, research, university and community service following a criteria set by the university.

But Assistant Professor Lawrence Hogue's tenure review process accentuates ambiguities in this criteria. For example, a guideline for the review committee states: "Superior intellectual attainment...is an indispensable qualification for appointment." The guideline also implies that a candidate's field of endeavor must be valuable to the university for the candidate to receive tenure. But a committee cannot accurately ascertain a person's "intellectual attainment" based solely on teaching records or research. And more importantly, a tenure review committee should not have the power to decide which fields are important to the university now or a few years down the road.

As for intellect, the criteria does not clarify what "superior intellect" is; it does not specify who the candidate should be compared to and on what basis. Furthermore, Chancellor Jack Peltason contradictorily commented on the tenure review process: "The questions are not: 'is the (candidate) good or bad or likeable,' or even: 'are they good in their field,' but 'do they meet the standards for tenure?'" Apparently, the phrase "superior intellect" is open to personal interpretation.

But the most problematic aspect of the criteria is its lack of concrete guidelines for evaluating a candidate's tenure to the university. Acting Chair of the Department of English Steve Barney said that the field of study "is not a relevant factor" for tenure review. Yet Hogue contends that the committee inexpediently lengthened his tenure review because of the obscurity of his field (Afro-American literature)—so inexpediently that Hogue believes the committee is racist.

The university must consider now what its goals are. Chancellor Peltason wants to make this "a world-class university." An aspect of a world-class university is diversity of fields of study. To plan for diversity, the university must set a concrete criterion for evaluating a field's worth. As it exists, fields are subject to prejudices and the criterion to personal interpretation.

Transcript fee hike

When university administrators feel that they can charge students for services without first informing them, then the system of student representation at UCI has little, if any, purpose.

If the Chancellor's office approves a recent Cashier's office proposal, a transcript copy price-hike will go into effect. The Cashier's office claims that the raise follows a precedent set by other UC schools and pays for checking students' past due bills. Initially, the transcript check cost \$3, and additional copies were \$1. The proposal suggests that, from now on, each additional transcript copy should also cost \$3. Whether or not Administration justifies the amount of the increase, the main point of concern is that the students were not informed of such a proposal—no matter how large or small the additional fee might be.

Administrators qualify the necessity to enact the increase on the grounds of labor intensity for additional copies.

Because ASUCI voiced objection, the Executive Vice Chancellor is reviewing the proposal as of this writing—and with good reason: Assistant Vice Chancellor Roy Dormaier justified not informing student representatives by "assuming they were opposed." Certainly, the Administration owes us the courtesy to inform us of fee hikes. Simply assuming that the students oppose does not justify silence.

New University Editorial Page and Letters Policy

The New University welcomes letters and comments from all readers. Due to volume, all letters must be limited to 300 words and commentaries to 1,000 words. All materials submitted to the New University are subject to condensation. Materials should be double-spaced and typed with a 60-character line. Materials must be accompanied by a valid mailing address, phone number and signature. Materials with pseudonyms, initials or that are anonymous will be read but not published. All signed opinions, artwork and letters are the view of the original author and not necessarily the opinions of the New University. Editorials are the expressed opinions of a majority of the Editorial Board. As such, editorials are unsigned and are normally located in the upper left-hand column of the first page of the Opinion section. Advertisements appearing in the New University reflect the views of the advertisers only. The New University is a student-run publication serving the UC Irvine community. All material copyright New University 1988. The New University is a member of the UC Wire Network.



Indirection in food service

By Joseph Deck

UCI's campus population is growing, and the realization of this hits home whenever one searches for a parking space or tries to get some-

thing to eat during the lunch hour rush. The fact is that UCI's food services presently lack the capacity to serve the growing campus population—but relief is on the way. The University Center Board is starting construction of Phase III of the University Center, which will offer a wide variety of food services to the students. When completed the University Center will contain a food court, a fast food specialty restaurant like McDonald's or Carl's Jr., a pub, a bistro and an expanded catering facility. In addition, on a separate bond issue the Student Affairs office will construct satellite food service facilities at Social Sciences, Biological Sciences, Medical Sciences and Humanities. This will increase the food service capacity and help relieve the current shortage of food services on campus.

In March the University Center will close to start construction of the new facility, and in June the Lumber Mill will also close. This will leave Gateway Commons as the only major food service facility open to serve the entire campus population. At present with all the existing food service facilities operating, it can be quite frustrating to try to get something to eat during lunch hour. The time-table the Student Affairs Office has set for this expansion in the short run will exacerbate the problem it set out to solve. Certainly the construction of these new facilities could have been scheduled so that the satellite food service facilities were completed before the existing facilities were shut

down. This would have made the transition a much less taxing experience to the people who depend on these food service facilities.

The Student Affairs Office's planning (or more appropriately, lack of planning) has resulted in university students and employees being unnecessarily inconvenienced. A more carefully planned food service program could have avoided the impending food service shortage. The failure of the student affairs office to set up a master plan for the expansion of the food service facilities is like taking off on a trip without a definite destination or a road map, which usually results in lots of wasted time—or even worse yet—never arriving at the desired destination at all. The idea that there is no formal plan backing this expansion program should be troubling to the administration and students, considering the millions of dollars spent on these new facilities.

The new food service facilities that will be constructed are definitely needed but it is a little late to do much about the shortages that will result while construction takes place. Students and faculty alike will have to put up with inconveniences, but this could be avoided in the future. Students should become more involved in the planning of these programs in the future. The concept of students being more involved seems a natural proposition, because the food service program is designed to primarily serve the student population. By requiring that a detailed plan be set down, and having more student involvement, campus food service could do a more efficient job of serving the campus population in the future.

Deck is a senior Economics major.

"Show me a sane man and I will cure him for y . . ."

C.G. Jung: Swiss psychiatrist.
(1875-1961)

STUDENT TRAVEL CENTER

London	\$528
Paris	\$588
Amsterdam	\$419
Athens	\$770
Oslo	\$660
Sydney	\$1189
Milan	\$660
Tokyo	\$549
Rio	\$828

10 Free Lottery Tickets with your International Booking by 1/31/88

*All prices round trip.

COUNCIL
Council Travel Services

5500 Atherton, Ste. 212, Long Beach
(Corner of Bellflower & Atherton)
(213) 598-3330
(714) 527-7950

ASUCI

HOMECOMING DANCE/CONCERT



FRI., FEB. 5:00 P.M.
Bren Events Center

Featuring:
Otis Day & The Knights
and Jack Mack and the
Heart Attack

Tickets:
\$7.00 ★ UCI Students
\$8.50 ★ General
Available at Bren Center Ticket Office.
* Tickets subject to \$1.50 facility/parking surcharge.

ASUCI Rock on Film "presents"



Fri & Sat. Jan 22, 23
7 and 9:30 pm Sci. Lec. Hall
\$2 UCI Students • \$2.50 General

ASUCI Noon Concerts THE PANDORA'S Tuesday Jan. 19, Noon Backlot West Patio

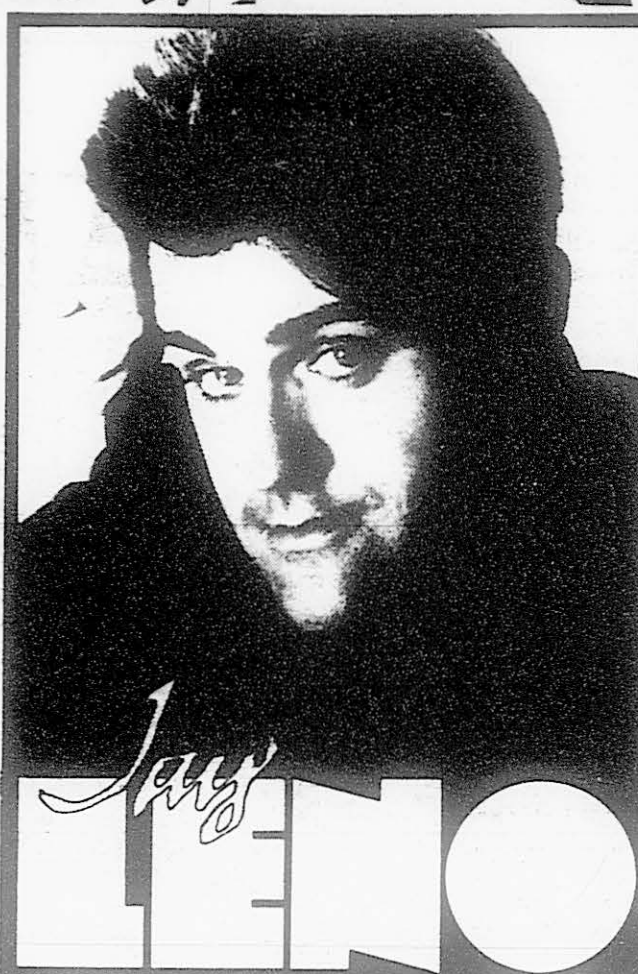
ASUCI Jazz Series -presents-

VOCAL WORKS
Singing Classic Vocal Jazz from
the 20's, 30's, and 40's

Thurs. Jan. 21 4:30-7pm

Backlot Restaurant

FREE—FREE—FREE



UCI HOMECOMING COMEDY PERFORMANCE Tuesday, Feb. 2, 1988 8 p.m. • Bren Events Center

Reserved Seating \$16.50 ★

Faculty/Staff \$15.00 ★

Student \$12.50

Tickets available at the Bren Center Ticket Office
(714) 856-5000

Ticketron or Teletron

(714) 634-1300 • (213) 410-1062

* Ticket price does not include \$1.50 facility/parking surcharge

ARE YOU READY... FOR SENIOR PORTRAITS?

WHO: All Graduating
UC Irvine Seniors

WHAT: Senior Portraits

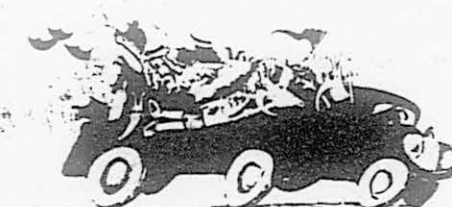
WHERE: Student Services I
(second floor in
Career Planning and
Placement Building,
Room 203, across
from the University
Center.)

WHEN: Sittings held Tues-
day, January 19 to
Friday, January 29
from 8:00 am to
5:00 pm.

HOW: Portrait Sign-Ups
Monday, January 11
through Friday,
January 15 from
8:00 am to 5:00 pm
at Student Services I,
Room 201A, or call
856-7745.

WHY: That you and your
fellow Seniors may
capture the
memories of this
special time in your
lives—DON'T BE
LEFT OUT!!

ALL SENIOR PORTRAIT
PARTICIPANTS WILL BE
ELIGIBLE FOR PRIZE
DRAWINGS.



THE UCI EXPRESS RIDES AGAIN!!!!

Due to an overwhelming response to our survey, ASUCI brings to you: EXTENDED HOURS—Monday thru Thursday till 10:30 pm!! Plus an added stop on Balboa Island!! Because of severe budget restrictions, we are forced to increase daytime fares 10¢ per ride, and night time fares 25¢ a ride. However, to help you budget for this change ASUCI is offering a 22 ride pass (day or night) for only \$7.50.

EVENING HOURS

Admin.	Parkview	Parkview	California	Admin.	Agate	Sagehen	Marine
Parkview	Parkside	Parkside	Estero		Park	Park	Park
7:00	7:10	7:15	7:20	7:30	7:40	7:45	7:50
8:00	8:10	8:15	8:20	8:30	8:40	8:45	8:50
9:00	9:10	9:15	9:20	9:30	9:40	9:45	9:50
10:00	10:10	10:15	10:20	10:30	10:40	10:45	10:50

DAYTIME HOURS: M-F 7am-6pm, Sat 10am-5pm, Sun 11am-5pm

EVENING HOURS: M-F 6pm-11pm, Sat 10pm-11pm, Sun 11pm-12am

GOLD LINE Schedule of Departure Points and Times

Parkview	Parkview	California	Admin.	Agate	Sagehen	Marine	Final Arts
Parkview	Parkside	Parkside	Estero		Park	Park	
7:40	7:45	7:50	7:55	8:00	8:05	8:10	8:15
8:00	8:05	8:10	8:15	8:20	8:25	8:30	8:35
8:40	8:45	8:50	8:55	9:00	9:05	9:10	9:15
9:20	9:25	9:30	9:35	9:40	9:45	9:50	9:55
10:00	10:05	10:10	10:15	10:20	10:25	10:30	10:35
10:40	10:45	10:50	10:55	11:00	11:05	11:10	11:15
11:20	11:25	11:30	11:35	11:40	11:45	11:50	11:55
12:00	12:05	12:10	12:15	12:20	12:25	12:30	12:35
12:40	12:45	12:50	12:55	1:00	1:05	1:10	1:15
1:40	1:45	1:50	1:55	2:00	2:05	2:10	2:15
2:40	2:45	2:50	2:55	3:00	3:05	3:10	3:15
3:40	3:45	3:50	3:55	4:00	4:05	4:10	4:15
4:40	4:45	4:50	4:55	5:00	5:05	5:10	5:15
5:40	5:45	5:50	5:55	6:00	6:05	6:10	6:15

DOES THIS
REPRESENT YOUR
CLUB OR ORGANIZATION?

ALLEGATE THE PRESSURE!!
COME INTO ASUCI AND APPLY
FOR SPECIAL PROJECTS
FUNDING!!

Special Projects Hearings will be held on the following dates: Jan. 20, Feb. 10, Feb. 24, March 9, and March 23. All hearings are Wednesday evenings from 5 to 7 pm in the Sycamore room. Note: Requests must be submitted 24 hours prior to hearing; and representatives must attend hearing.

Eiland and Parks sink UOP, 61-50

By Jane Huang, Staff writer

Play got physical at the Bren Events Center last Thursday, as the women's basketball team faced the Univ. of Pacific, with the Anteaters coming out victors, 61-50, to end a two-game slide.

Junior forward Natasha Parks started the Anteaters (2-3 PCAA, 4-9 overall) and herself going early by scoring the first two points of the game. It was a lead they would never relinquish.

"We played good defense, we always have though."

Natasha Parks

Although UCI star Natalie Crawford sat out most of the half with three personal fouls, the Anteaters more than made up for her absence with their play away from the basket.

"We played good defense," said Parks, UCI's top-scorer with 16 points. "We always have, though."

Pacific (1-4, 6-8) stayed close early with the play of Michelle Sasaki. The junior guard, who contributed eight points and five rebounds, is ranked in the top 10 for three all-time PCAA offensive categories—total assists, assists

See HOOPS, page 15



Bryan Mar/New University

Seniors Frank Woods and Wayne Engelstad apply the solid defense that led to an 87-81 win over first place Utah State.

Swimming

Junior swimmer back on the Wright track

By Glenn Backus, Staff writer

These days the pool is much safer than the roads for junior Matt Wright.

Injured last year in a motorcycle accident that left his arm in a sling for two weeks, Wright has come back this season to lead the men's swim team to a 2-0 conference record.

Following a good freshman year, the accident caused Wright to slide his sophomore year, but he now feels ready for 1988.

"When I got out of the sling, I continued to swim, but I never really bounced back," Wright said. "But I have had a good start this year."

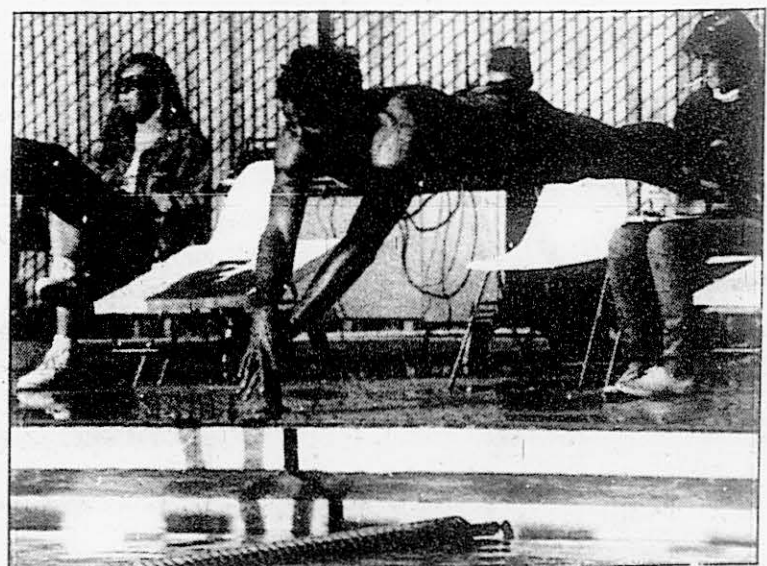
These days he is spending four

hours in the pool plus one hour of weight training a day in an effort to get ready for the PCAA Championships in late February. So far it appears to be paying off.

Last week Wright took fourth in the 50-yard free out of a field of over sixty at the UCI/General Automotive Invitational. Wright is probably UCI's best male swimmer, according to coach Charlie Schober.

"Matt's having a great year, he's really risen to the top," Schober said. "He's helped take the place of the seniors that graduated last year."

With the departure of Kirk Fuchs and Wright's good friend



Jim Barrera/New University

In lane three, junior Matt Wright takes off en route to a first place finish in the 100 yard freestyle against Southern Cal.

— Kirk Wolcott

Giant Killers

Men back in the hunt; knock off both PCAA leaders in same week

By Michael Itagaki, Staff writer

Senior center Wayne Engelstad looked like a battered prize fighter before the men's basketball game against Utah State, sporting a swollen upper lip with 10 stitches, and a missing front tooth.

A stray elbow knocked Engelstad out of practice last week, but Engelstad came back to lead UCI's knockout performances this weekend as the Anteaters swept past Utah State 87-81, and San Jose State 98-77. The Aggies (10-5 overall, 5-1 conference) suffered the first headache, losing to the Anteaters (8-6, 3-2) in a key PCAA game at the Bren Center last Thursday.

Utah State lost sole possession of first place in the Pacific Coast Athletic Association with the defeat, and Engelstad, who finished the game with 35 points, delivered the devastating blows in the final minutes.

With the score tied at 81 and 1:22 to play, UCI called time. Head coach Bill Mulligan told his team to run its regular offense, but things didn't turn out that way.

Engelstad received a pass at the top of the key and quickly drove past a bewildered Gilbert Peie. Then, the 6-8 250 lb. senior from Rosemead deftly split the rest of the Utah State defense, and spun in a reverse layup to give UCI an 83-81 lead with 1:13 to play.

Engelstad's next big play came with 50 seconds remaining as he thwarted Utah State's first effort to tie the game by swatting away Jon Judkins' driving layup attempt.

And finally, with 19 seconds left, Engelstad sealed the victory by rebounding a Kevin Nixon miss,

and canning both ends of a one-and-one to give UCI a secure 85-81 edge.

"Wayne played well in crunch time," Mulligan said, "his last drive was not a planned play. I can't take any credit for it."

But Mulligan did want credit for the tough defense that the Anteaters displayed in the first half. UCI suffocated the Aggies' offense, forcing 22 turnovers and a 42.4 field goal percentage onto Utah State.

Box score on page 16

"Our defense was pretty good tonight," Mulligan said. "We kept Utah State to 28% shooting in the first half, and we'd like to take a little bit of credit for that."

"We tried to stay in their face," Engelstad said. "They're known for being great shooters, but we shut them down in the first half."

Nixon, the Aggies' leading scorer (averaging 16.3 ppg), connected on just three of nine field goal attempts in the first half, and missed all three of his three-point shots. He still managed to score 17 points with nine rebounds and nine assists.

Senior forward Frank Woods tossed in 11 points and grabbed 7 rebounds for UCI, and junior point guard Kevin Floyd had another good game with 11 points, nine assists, and only two turnovers.

"We don't have the same talent that [Nevada-Las Vegas] has, so we have to play strong and hard all the time," Floyd said. "We have to be ready to do everything that the coaches ask."

See MEN, page 15

Coaches' Corner

Charles Schober,
UCI Swimming Coach

Born: Indianapolis, IN
College: U. of Oklahoma
Major: Phys. Education
Experience: Eight years as a Norman, OK high school coach (four state titles). Three years as a USC assistant. Head coach at Heritage Park in Irvine.

Favorite Athlete: Kurt Fredricks (who swam for Schober at Norman and USC).



Jim Barrera/New University

CHARLIE SCHOBBER

Charlie Schober came to UCI in 1981 from Heritage Park, but has been coaching nearly 20 years.

"I like working with people, helping them achieve their goals," he said.

But why UCI? "I wanted to coach at the collegiate level and the job was vacant," he added.

"The best thing about UCI is the way the school maintains a balance between athletics and academics."

So far this season, the women boast a 5-1 dual meet record, and the men are 4-2.

"The women have a lot of new talent," Schober said. "Half of the team are freshmen but they are one of the strongest classes in the school's history."

Schober expects the women to challenge a number of school records this season.

The men, having graduated a number of top swimmers, are also rebuilding.

Jock Shorts

Only up. That's where the men's volleyball team (no longer a club) is looking to go this season. After their first official loss as a UCI team, the Anteater spikers made their way to Pepperdine. Unfortunately they lost again 15-12, 15-5 and 15-10. Somebody really didn't like UCI when they were making out the schedule. In their first year as a team, they were slated (or fated) to play 15 of the top 20 teams in the nation. That hurts. But hey, think of the exposure.

In and out. With the departure of junior Peter Strauss (he quit) and defensive coach Andy Andreas (he...ah, retired), and with the rearrival of sophomore Arthur Phillips, the doors to the UCI basketball locker room are swinging almost as fast as the opposing teams (from Las Vegas) have been scoring.

However. The changes in personnel have not affected some fine individual performances. As of last Friday, junior Mike Doktorczyk leads the conference in the free throw percentage department canning almost nine out of every 10 (.892). Senior Wayne Engelstad is third in scoring (22.6) and fifth in rebounding (7.3). And freshman Justin Anderson is among the conference leaders

from the three-point line at 45.4 percent.

New record. The women's basketball team broke a school record in their 81-73 win over CS Fullerton by shooting 16 for 20 (80 percent) from the floor in the second half. In addition, they also went 23 of 26 (.885) from the free throw line. Way to go.

For your next midterm. A test of sculling trivia. When the crew team competes in intercollegiate competition, what is the event called? See answer below.

What a breeze. The UCI sailing team, under Coach Craig Wilson, won the 1988 Rose Bowl Regatta Jan. 3. Skipper Nick Scandone with crewman Mike Sturman won their division, defeating a 19-team field.

Game time. Predicting the score to the UCI victory over Utah State within nine points. Rob Davis won the UCI Hoops Challenge and a pair of tickets to Saturday's home game against PCAA-leading San Jose State game. Neil Walker was second (11 point difference), winning tickets to the same game.

Trivia Answer. Crew competitions are called regattas.



Bryan Mari/New University

Cleaning his ear? Nope, coach Dean Andrea uses his head to guide UCI to a 61-50 win, Thursday night against PCAA rival UOP.

PCAA Free Throws Leaders
 Player-team PCT
 1. M. Doktorczyk-UCI .886
 2. G. Paddio-UNLV .823
 3. R. Morton-CSF .820
 4. W. Engelstad-UCI .817
 5. R. Berry-SJSU .814
 6. J. Roberson-NMSU .794

-Glenn Backus

TAKE ADVANTAGE OF YOUR STUDENT STATUS and **SAVE** on your travel expenses. Go to your STUDENT TRAVEL AGENCY **Outroads Travel**

for all your travel plans—we are now a full-service, licensed travel agency.

Including:
 • Eurail passes
 • Britrail passes
 • Discounted student flights
 • Charters
 • Student ID cards
 • Youth hostel cards
 • Much more



UC IRVINE RUGBY FOOTBALL CLUB

IF YOU WOULD LIKE TO JOIN AN EXCITING SPORT CLUB AND PLAY ON UCI'S ONLY FOOTBALL TEAM



CONTACT: ROGER TURK
 (714) 639-2568
 OR
 CAMPUS RECREATION
 856-6985

"SEE YA ON THE PITCH MATE."

Commentary Basketball watching with class

By Kirk Wolcott, Staff writer

Sure a football team would be nice, but let's consider what we already have. Or don't have.

Excluding the UNLV and Fullerton basketball contests last season — guaranteed sellouts on any campus — average attendance at the remaining men's home games was 2,353, roughly half the Bren Center capacity. Divide this number by ten, and you're well over the women's average. Take into consideration that many of these fans are non-students or opponents, and things get really ugly.

Instead of increasing the number of seats at the Bren to 5,000 (as was done by building the Bren Center) something should have been done to better fill the ones already there. What's the problem?

Could it be the quality of play? Hardly. Last season, UCI's cardiac arrest style of Brooksball led to a team record — eighth in the nation — 83.5 points a game average. This trailed only Final Four entry UNLV in PCAA scoring. This year, with Thursday's win over previously unbeaten Utah State, the Anteater's are back in the thick of the conference race.

So it must be the price of admission, right? Wrong again. Tickets cost \$1.43 a game for students — about the equivalent of a large soft drink in Gateway Commons.

Maybe it's the facilities? Game advertising? Parking space? No, no and no. The Bren Center rivals the best auditoriums in the country. Game information is posted weekly throughout campus. And parking is

readily available, and free.

What does that leave, then? Studying.

At this monolith of upper academia, it appears that keeping one's nose in a book takes precedent over opening one's mouth at a ball game. In fact, last week some 1,400 students lined up to get into a TV and Culture class, whereas only 1,247 made it to last season's home game against Pepperdine.

So with this in mind, a new class is now under consideration at UCI: Basketball Watching 1A.

Basketball Watching 1A, offered through the Apathy Department,

* UCI HOOPS CHALLENGE *

Predict the score to the Saturday, Jan. 23 game, the Anteater you predict will score the most points and his point total

UCI: _____ Fresno St. _____

Player: _____ Points: _____

Entries must be received by 5 p.m., Friday, Jan. 22 at the New University office, 3100 Gateway Commons. Two winners will receive a pair of tickets to the Thursday, Jan. 28 home game against Cal State Long Beach.

Name _____

Phone _____

OFFICIAL RULES:

1. One entry per person. UCI students and faculty, excluding New University employees, are eligible.
2. The two (2) closest predictions win a pair of tickets to the stated men's home game. In case of tie, winners will be decided by scoring leader, then point total. If a tie persists, winners will be decided by a random drawing.
3. In case of dispute, the decision of the New University sports staff is final.

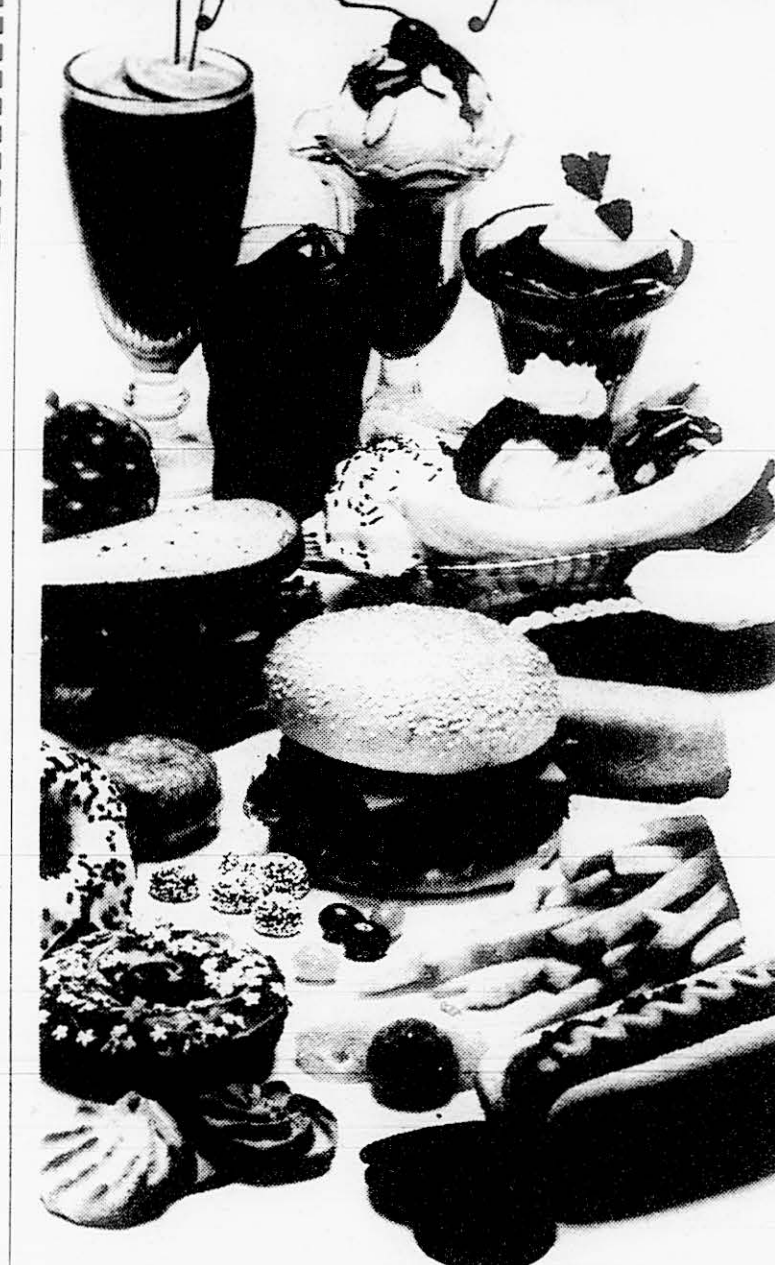
ment, will meet evenings at the Bren Center, once or twice a week, on game days. The cost will be that of admission — a mere \$20 per quarter. The course text, a game program, is optional.

Requirements for this new class include arriving and staying for each men's and women's home game. Students will be asked to show an ability to wave a pom-pom, stomp their feet and produce obnoxiously antagonizing noises during opponents' free-throws.

The course will be taught indi-

See 1A, page 14

Throwing it up won't get it out of your system.



In the beginning, binging and purging seemed like an easy way to control your weight.

Now, it's controlling your whole life. Because bulimia isn't a miracle diet.

It's a dangerous disease.

A potentially fatal obsession that consumes your mind while it destroys your body.

And no matter how many times you tell yourself you can stop, that this time is the last time, the truth is: you can't quit alone.

But there is a place where you're not alone.

The Eating Disorders Program.

Our medical staff and counselors have helped hundreds of women suffering from bulimia, so we know what you're going through. And we can help you end your physical and mental pain through a confidential, medically supervised inpatient program.

If you or someone you love has a problem with bulimia, anorexia or overeating, call the Eating Disorders Program.

Because throwing up all that food you're consuming won't help.

You need care and understanding to eliminate the helpless feeling that's consuming you.

EATING DISORDERS PROGRAM

BREA HOSPITAL
 NEUROPSYCHIATRIC CENTER

(714) 529-4963

OR

(800) 422-4106

© 1987 Comprehensive Care Corp.

Run Away And Join The Circus! U.C. Irvine Party at Disneyland

Saturdays and Sundays
 January 23, 24, 30, 31
 12 Noon - 12 Midnight
 \$13.50 Adults
 \$10.50 Children



LUCKY 13 SPECIAL!

PURCHASE 13 OR MORE
 ADMISSION TICKETS AND
 RECEIVE ONE FREE TICKET!

ALL 13 TICKETS MUST BE PURCHASED AT ONE TIME.
 TICKETS MUST BE PURCHASED AT THE UNIVERSITY CENTER SIDE POCKET.
 OFFER NOT VALID ON SALES PRIOR TO JANUARY 19, 1988.
 QUANTITIES LIMITED TO 13 GROUP SALES. OFFER EXPIRES JANUARY 26, 1988.

Biology Jan. 13	Small Group Tutoring	Tutorial Card	Tutorial Assistance Program Trailer 702 856-7026	Tutorial Card	Sign Ups Begin Jan. 13 at 9:00 am	Chemistry Jan. 13		
Social Ecology Jan. 15	<h1>Go To The Head Of Your Class</h1> <p>1st Day Jan. 13, 1988 Biology and Chemistry Only 2nd Day Jan. 14, 1988 Math, Physics, ICS and Engineering 3rd Day Jan. 15, 1988 Social Sciences, Social Ecology, Humanities, Foreign Languages and all others.</p> <p>Where: Sign-up tables are located in front of Support Services Trailers (across from Humanities Hall).</p> <p>When: Jan. 13 through sixth week. Mon.-Fri. from 9:00 to 4:00</p> <p>Important: Our fee for tutoring is still a bargain at \$50.00 per course per quarter. The major change in the fee structure is the Assignment Fee of \$15.00, payable by the student to TAP if the student is assigned to a tutorial group but fails to attend and does not inform the TAP office within 48 hours of assignment. Students will be billed during the quarter.</p>					Tutorial Card		
Foreign Languages Jan. 15						Tutorial Card	Across from Humanities Hall	Humanities Jan. 15
Engineering Jan. 14						Tutorial Card	Tutorial Card	First Come First Served
Graduate						Physics Jan. 14	All Others Jan. 15	Math Jan. 14

Basketball Preview

Anteaters to face Gauchos Saturday

Gutsy Santa Barbara guard bounces back from surgery

By Tom Starnes, Staff writer

Lately, the UC Santa Barbara women's basketball team has not exactly acted like a juggernaut rambling through one opponent after another.

In fact, with UCSB losing their last four in a row, it appears that the Anteaters may be catching them at just the right time.

Santa Barbara (0-4 PCAA, 7-5 overall) started the season with a 7-1 clip, before hitting the skids. Ironically, the Gauchos, picked by the PCAA coaches to finish last in the conference, looked like they were going to turn that around when they fell into this slump. Still, they may be a sleeping giant.

UCSB, led by seniors Kira Anthofer and Patti Niichel have played well together all year.

"The key for us is team unity," UCSB senior Therese Pulchalski said. "We have a very balanced attack."



THERESE PUCHALSKI

Pulchalski is coming back from surgery which took her out of action for almost two weeks and her appendix out permanently.

"At first I thought it was your basic stomach ache," she said. "Then later that day I was in surgery." She has recovered nicely though and is looking forward to helping to turn the team around.

"We need to get back into that winning mentality. We've been

losing for three years now," she added. "I mean if winning meant everything to me I'd have been hospitalized by now."

All kidding aside Pulchalski is looking to have good senior year. "I've been too tense in the past and it has hurt me," she said. "I just want to relax and win some now."

Even though UCI came out on top in both meetings last year—90-56 and 85-71—the Anteaters won't be able to relax against the Gauchos this time around.

Irvine is led by two-time All-PCAA selection Natalie Crawford. Junior forward Natasha Parks, who had a game high 16 points in UCI's 61-50 win over Pacific last Thursday, and Cheryl Eiland, who brought down 11 rebounds, give the Anteaters an imposing front line. But injuries have slowed the team.

If the Gauchos take advantage of this they should be in good shape. This sizes up to be a good game.

1A: New class offered at UCI

Continued from page 13

rectly by seasoned lecturer Coach Bill Mulligan, now in his eighth year at UCI. Guest speakers will include the Dean of PCAA basketball coaches UNLV's Jerry Tarkanian and a host of colorful and outspoken hoops strategists. Throughout the quarter, students may be asked to attend one or two field trips to away games.

Since the temptation to bail class for an extra hour of bookworming might arise, text books will be prohibited at the Bren. Half-time pop quizzes are also being considered to ensure attendance.

This course will have no final, unless the Anteaters advance to the NCAA Tournament. But, then again, who would know?

Maybe Basketball Watching 1A should be made part of the breadth requirement.

SWIM: 'Really risen to the top'

Continued from page 11

Brian Pajer, more of the scoring burden has been placed on Wright's shoulders. But it's a burden that does not bother him.

"I'm definitely following in big footsteps," he said, "but the only pressure I feel is the pressure I put on myself."

While Wright is busy picking up where he left off, he has noticed a change in the team. The approach this year is towards less yardage and higher quality, as opposed to long swim sets. This has aided Wright because the workouts are more aerobic than before, enabling him to catch up in the second fifty yards of a one hundred yard race.

"I don't think that I have the quickness to compete as well in the 50 as I do in the 100," said Wright, who specializes in the longer of the two races, where he hopes to win at the PCAA

Championships.

The rest of the team could be winning right along with him. UCI has a young team this year—none of the top scorers are seniors—a lot of potential and the benefit of an experienced coach.

"Charlie is a great coach," Wright said. "He's very supportive."

Wright was born in Belleville, Illinois, and started swimming at age seven. His family moved to Mission Viejo ten years ago where he swam for Mission Viejo High School for four years, twice earning All-American honors before coming to UCI.

Despite an up and down first two years here, Wright is back on a winning course. His speed has returned and he feels healthy again. Why, then, does he still ride a motorcycle?

"It's easy on gas, easy to park and fun to ride," Wright said. How's that for honesty?

Last Day for a Full Refund is January 30

on Winter Coursebooks (code A & C) purchased after Jan. 4, 1988



- You must have your register receipt
- Books must be in mint condition
- You must have your driver's license and student ID

DON'T WAIT TOO LONG!

Coursebooks will be returned to the publisher on Feb. 1

Coursebooks purchased after Jan. 30 must be returned within working day.

UNIVERSITY BOOKSTORE

CONTACT LENSES

\$50 pair
\$50 pair

Miller Eye Center

354-8888 548-2711
Myopia Surgery and Permanent Eyeliner

Get Hot 'n' Steamy



Hot. Our Deep Dish Apple Pie is individual ceramic dishes straight from the oven and served ala mode.

Hot. Hudson's Classic Coffee, accompanied by a side of fresh whipped cream, chocolate chips and a cinnamon stick. Always piping hot! This Hot 'n' Steamy combo is perfect on a cold evening, after a show, or following one of our mouth-watering burgers.

Hot. Hudson's Grill... Come flirt with the '50s!

Happy hours Monday-Friday Food and drink



Costa Mesa
580 Anton Boulevard
549-8277

Irvine
5401 University Drive
786-1821

ENGINEERING MAJORS:

Lace Up a Great Future!

WITH...

BAXTER HEALTHCARE CORPORATION
Edwards Divisions and Bentley Laboratories Inc.

Meet the Representatives of Baxter, Edwards Divisions and Bentley Laboratories Inc.

We'll be on campus the following dates
Orientation: January 19, 5:30-7:00pm in the Terrace Room (refreshments will be served)
On-Campus Interviews: February 4-5

Baxter Healthcare Corporation, Edwards Divisions and Bentley Laboratories Inc. have been contributing to the quality of life since 1960 as major manufacturers of cardiovascular and critical care products for the healthcare field. Now is your chance to "lace up a great future" with Baxter, Edwards Divisions and Bentley Laboratories Inc.

As a graduating senior, you've set certain goals for yourself and worked hard to achieve them. This quality, along with your academic excellence, makes you an ideal candidate for Baxter, Edwards Divisions and Bentley Laboratories Inc.

Baxter, Edwards Divisions and Bentley Laboratories Inc. are not only two of Southern California's most successful businesses, but excellent places to begin your Engineering career. We have ongoing needs for graduating seniors in the following majors:

**Electrical Engineering
Mechanical Engineering
Chemical Engineering
Physics (with emphasis in Optics)**

Contact the Placement Office for more information about how you can schedule an interview with Baxter, Edwards Divisions and Bentley Laboratories Inc.

As part of the highly-successful Baxter Healthcare Corporation, we provide employees with generous starting salaries, excellent benefits, and advancement potential.

Baxter

We are an equal opportunity employer m/f/h

HOOPS: 'It was really a good win'

Continued from page 11

per game and free throw percentage.

It took inspired plays by UCI to offset UOP. For example, during one stretch early on, senior guard Cheryl Hoffman made a stunning save for UCI that landed her into Pacific's bench. She recovered quickly enough to get back to the basket to score two of her 10 points.

Hoffman closed out the first half with a pair of baskets that put UCI up 26-21 and the Anteaters held the Tigers scoreless for the last three minutes of the half.

In the second half, UCI stretched its lead to 53-36. Parks put a finishing touch to the game with a basket at the end that sealed the victory. It was a powerful performance by Parks, as was noted by teammate Cheryl Eiland.

"She had a great night from both the free throw line and the field," said Eiland, who led the game with 11 offensive rebounds.

"It was an extremely physical game," Coach Dean Andrea said. "They tried to trap and attack us and we did not respond well to it. We didn't play very well. We should have more poise for the veteran ball team we are. We played well defensively, but not offensively."

"We really needed to win this game for unity," Parks said. "It was really a good win because we're playing a tough game Saturday against Hawaii."

The major problem the Anteaters are facing is the loss of junior guard Kippie Brown, who will probably sit out the whole season due to a foot injury.

"We have no point guard," Andrea said. "Hoffman, who is not a point-guard, and (freshman Kristi) Ahlstedt are filling in the spot. But because Brown is injured the whole team is out-of-sync."

Cal swimmer named top athlete for '87

California, arguably the top state for collegiate athletics in the country, has added one more honor to its long list. Last week in Nashville, Tenn., Mary T. Meagher of UC Berkeley accepted the Broderick Cup as the top collegiate woman athlete for 1987.

"Mary T. is an outstanding athlete and individual," UCI swimming coach Charles Schober said. "She is most certainly deserving of the honor."

Meagher has held the world record in both the 100-meter and the 200-meter butterfly since 1979. She is currently training for her third try at the Olympics.

Swimming as a senior for the Bruins last year, Meagher was an All-American in six events. She won the 100-meter and 200-meter butterfly events at the NCAA championships and has only lost once in these events since 1979.

Also honored was Connie Clark, the softball pitcher from Cal State Fullerton. Clark had a 33-5 record and an 0.46 ERA as a senior leading the Titans to third place in the NCAA championships.

— Tom Starnes

MEN: UCI defeats Utah State 87-81, SJSU 98-77

Continued from page 11

"We don't have the same talent that [Nevada-Las Vegas] has, so we have to play strong and hard all the time," Floyd said. "We have to be ready to do everything that the coaches ask."

Last Saturday night, UCI followed their coaches orders to the letter, and dismantled a stunned San Jose State team, 98-77 in front of 3,438 fans at the Bren Center.

"I thought UCI played a good game," Spartan coach Bill Berry said, "and we couldn't play a worse game, so the result was a good old fashioned stomping."

Engelstad led the Anteater attack with 29 points, while Woods and Floyd each chipped in with 18. Floyd also added 8 assists while backcourt mate senior Mike Hess tossed in 14 points.

"You have to give [UCI] credit tonight," Berry said, "they got a lot of offense from different players and not just Wayne."

Conversely, the Spartans only consistent threat all night long was All-American candi-

date 6-8 guard Ricky Berry, who finished with a game-high 31 points.

"[Sophomore forward] Mike Labat did a great job on Berry tonight," Woods said, "He earned every single one of his points tonight."

"It was a great team effort on defense tonight," Floyd said, "[Berry] got his 31 points, but we still won by 20."

UCI never trailed and sprinted out to an 18-8 lead six minutes into the game on freshman guard Justin Anderson's three-pointer.

In the second half, UCI made it a 15 point bulge with 15:34 to go as Floyd stole the ball for a breakaway slam dunk over Berry.

"This keeps us in the race," Floyd said, "Our conference is so wide open, that anything can happen."

The victory kept UCI just one-and-a-half games behind conference leading Utah State, and the Anteaters will look forward to a tough road trip this week as they travel to University of the Pacific on Thursday, then face Fresno State in Selland Arena on Saturday night.



Senior forward Zalina Walton drives through a pair of Pacific players in UCI's 61-50 victory.

In 7 days the Lord created heaven and earth.

Give us 7 days, and we'll get you your Guaranteed Student Loan.

Ask about **GUARANTEED STUDENT LOANS** and **SUPPLEMENTAL LOANS** For STUDENTS

(Parent Loans are also available.) Within seven days* after Educaid receives your correctly completed application, your GSL or SLS check will be on its way to your Financial Aid Office. See your FAO and ask for Educaid. Or call us and we'll send you an application.

BONUS!

SLS: Educaid, unlike many lenders, capitalizes (adds interest to principal) only once—at graduation. No interest on interest—a substantial savings to you.

*Educaid's processing time. School processing time may take longer. Allow time for U.S. mail and school processing before and after Educaid's 7 days. Add a couple of extra days for processing non-deferred SLS loans.

Educaid

3301 C Street, Suite 100-A, Sacramento, CA 95816 (916) 446-1626

Toll free in Calif. (800) 442-7667

Sportstats

Sports This Week

Tuesday-Sunday, Jan. 19-24

Riviera Women's Intercollegiate Tennis Invitational, Pacific Palisades, all day

Saturday, Jan. 23

Men's basketball vs. Fresno State, Fresno, 7:30 p.m.
Men and women's swimming vs. Long Beach, Crawford Pool, noon

Women's basketball vs. UCSB, Bren Center, 7:30 p.m.
Sailing, IPT Big Boat Regatta, Long Beach, all day
Men's volleyball, UCSB Invitational, TBA

Box Scores

UCI	Min	Fga	Fta	Q-T	A	TOT P
Labat 9	1-3	0-0	1-3	0	1	5 2
Woods 32	5-11	1-1	1-7	2	1	5 11
Engelstad 27	12-16	10-12	2-6	1	5	4 35
Hess 29	0-1	4-6	0-0	2	1	2 4
Floyd 28	3-10	5-6	0-3	9	2	2 11
Creswell 16	0-3	0-0	0-0	0	0	0 0
Hrdm 15	2-3	0-0	2-5	0	3	3 5
Andren 16	2-5	5-5	0-0	1	0	2 10
Flornin 9	1-2	0-0	0-1	0	1	2 2
Johnsen 13	2-4	1-2	0-3	2	1	3 5
Ditzyk 16	0-2	2-2	1-2	3	1	1 2

TOTAL 200 28-60 28-34 32 20 16 29 87
%S .467 .824
FG % By Halves (1st, 2nd): (.469, 15-32)
(.464, 13-28)

3 Pt. Goals: (.231, 3-13; Hrdman 1-1; Anderson 1-3; Engelstad 1-4; Woods 0-2; Creswell 0-2)
Steals: (Woods 1, Engelstad 1, Hess 1, Anderson 1, Florentine 1)
Blocked Shots: (Johnsen 2, Engelstad 1, Labat 1)

SCORE BY HALVES	1ST	2ND	TOT
Uah St.	34	47	81
UCI	39	48	87

Jan. 14, 1988
UCI 87, Utah State 81

UCI	Min	Fga	Fta	Q-T	A	TOT P
Conroy 36	6-11	8-9	5-15	1	5	4 20
Pete 24	2-6	1-2	1-4	0	0	4 5
Hakepp 20	3-4	1-2	0-3	0	2	5 7
Nixon 39	6-13	5-7	4-9	9	5	4 17
Newey 39	4-13	4-9	2-5	2	4	5 15
Andren 17	1-7	5-6	0-1	1	3	4 7
Gicher 1	0-0	0-0	0	0	0	0 0
Peppek 5	1-2	0-0	1-1	0	1	0 2
Davis 3	0-0	0-0	0	0	0	0 0
Judkins 16	2-3	4-5	0-1	3	1	1 8

TOTAL 200 25-59 28-40 42 16 22 27 81
%S .424 .700
FG % By Halves (1st, 2nd): (.286, 8-28)
(.548, 17-31)

Jan. 14, 1988
UCI 81, U of P 50

U of P	Min	Fga	Fta	Q-T	A	TOT P
Walters 31	4-8	0-0	0-2	2	3	3 9
Logan 25	2-8	0-1	1-2	1	2	1 4
Szkalski 32	5-15	0-0	0-2	1	0	2 10
Sasaki 39	2-5	3-5	4-5	4	7	1 8
Milgate 16	1-2	0-1	0-3	1	3	1 2
Parker 13	1-3	0-0	0-0	0	3	1 2
Geyser 27	1-3	6-6	2-3	1	3	3 9
Mhndt 17	2-6	2-2	2-2	3	2	3 6

TOTAL 200 18-51 11-15 27 13 23 15 50
%S .353 .733
FG % By Halves (1st, 2nd): (.350, 7-20)
(.355, 11-31)

3 Pt. Goals: (.600, 3-5; Sasaki 1-1; Geyser 1-1; Walters 1-3)
Steals: (Walters 2, Logan 2, Szkalski 1, Sasaki 1, Milgate 1, Parker 1, Geyser 1)
Blocked Shots: (Szkalski 1)

UCI	Min	Fga	Fta	Q-T	A	TOT P
Parks 26	6-11	4-4	1-4	4	6	2 16
Eiland 31	5-6	2-2	1-11	0	2	2 12
Crowd 21	3-8	0-0	1-5	0	3	4 6
Lee 25	2-8	2-4	1-2	1	4	1 6
Lee 2	0-0	0-0	0	0	3	1 0
Hofman 26	4-6	2-2	0-1	5	2	4 10
Worms 2	0-0	0-0	1-1	0	2	1 0
Skiresz 2	0-0	0-0	0	0	0	1 0
Unfred 21	1-1	0-0	0-4	0	2	1 2
Walton 17	2-5	0-0	2-3	2	4	1 4
Johnsen 16	2-5	1-1	2-3	0	0	2 5

TOTAL 200 25-52 11-13 36 14 27 19 61
%S .481 .846
FG % By Halves (1st, 2nd): (.481, 13-27)
(.480, 12-25)

3 Pt. Goals: (.000, 0-1; Lee 0-1)
Steals: (Walton 3, Unfred 2, Hoffman 1, Lee 1, Crawford 1, Eiland 1)
Blocked Shots: (Eiland 1, Crawford 1)

SCORE BY HALVES	1ST	2ND	TOT
U of P	21	29	50
UCI	26	35	61

Basketball

MEN'S BASKETBALL PCAA STANDINGS

As of Sunday, Jan. 17

	W	L	PCT	GB	W	L
Utah State	5	1	.833	---	10	5
UNLV	4	1	.800	0.5	14	1
New Mexico	4	2	.667	1.0	11	7
San Jose St.	4	2	.667	1.0	8	6
UCSB	3	2	.600	1.5	11	3
UC Irvine	3	2	.600	1.5	8	6
Long Beach	3	3	.500	2.0	9	6
Fresno State	1	4	.200	4.0	4	10
Pacific	0	5	.000	4.5	5	10
CSF	0	5	.000	4.5	4	10

Women's Basketball PCAA Standings

As of Wednesday, Jan. 14

	W	L	PCT	GB	W	L
Hawaii	4	0	1.000	---	10	3
Long Beach	4	0	1.000	---	7	3
SDSU	3	0	1.000	0.5	10	2
UNLV	3	1	.750	1.5	9	2
CSF	2	1	.667	2.5	7	5
Pacific	1	3	.250	4.5	6	7
UCI	1	3	.250	4.5	3	9
Fresno St.	0	2	.000	5.0	5	6
UCSB	0	4	.000	6.0	7	5
San Jose St.	0	4	.000	6.0	1	11

Basketball Dow Jones PCAA Scoring Leaders

PCAA National Rankings

*According to USA Today Through Jan. 15, 1988

As of Tuesday, Jan. 13

Record	NCAA	U/D	Player-Team	G	TP	Avg
UNLV 14-1	10	-1	Morton-CSF	13	321	24.7
UCSB 11-3	28	+13	Berry-SJSU	13	311	23.9
NMSU 11-7	58	+9	Engelstad-UCI	13	294	22.6
Utah St 10-5	64	+18	Wiley-LBSU	14	306	21.9
LBSU 9-6	84	-15	Paddio-UNLV	13	275	21.1
SJSU 8-6	99	+11	Joseph-NMSU	17	298	17.5
UCI 8-6	124	+15	Turner-CSF	11	184	16.7
CSF 4-10	128	-26	Nixon-USU	14	228	16.3
Fresno 4-10	179	+6	Bsnght-UNLV	13	211	16.2
Pacific 5-10	219	-17	DeHart-UCSB	13	209	16.1

U/D: Weekly change in rank

Week in Review

- Jan. 12 Men's Volleyball, UCI lost to Pepperdine 15-12, 15-5, and 15-10
Jan. 14 Women's basketball, UCI beat UOP, 61-50
Men's basketball, UCI beat Utah St., 87-81
Jan. 16 Women's basketball, UCI beat Hawaii, 72-67 (Natalie Crawford scored 21 points)
Men's basketball, UCI beat SJSU, 98-77

Ticket

New University

JANUARY 18, 1988 17



An example of the many different pieces of movie memorabilia available to enthusiasts.

REACHING FOR THE STARS

Collect movie memorabilia to get a piece of your favorite actor or actress

By Bernie Dy

If you ever find yourself adoring an actor or actress that you absolutely must have a piece of, well, you can...for a price.

At Book City Collectibles, 6631 Hollywood Blvd., or at the Collectors' Bookstore, 1708 N. Vine St., you just might find something to help quell your desires.

Marci McKee, manager of Book City Collectibles, sells movie books, magazines, photographs and original scripts, all based on stars from movies, television and music.

Movie star collectibles are definitely "in," according to McKee. "We have a large inventory, and our business keeps growing." The store's popularity depends greatly on the popularity of the cinema, but in this case, that is a positive, not an inhibiting factor. "Everybody knows about the movies. Cinema is still a fantasy," she said.

Malcolm Willis, owner of Collectors Bookstore, deals with an emphasis on movie stills, posters, props and costumes, as well as scripts, but finds many of the same truths that McKee does. "Since the movies have become accepted as an art form, we've found that there's a

lot more interest in them," Willis said.

Both stores concentrate on the star rather than any movie or genre itself, and the products cover a wide selection of celebrities. "We sell more by the star. People like to buy by the star," Willis said.

What major factor drives people to collect? "If I had to say, it would be physical [attraction]," McKee said.

Willis responded similarly. "The teenagers especially, are just looking for a picture of a big star, you know, Michael J. Fox or something like that, for their bedroom."

Willis acknowledged an age gap between many collectors. "The much older fans are much more serious collectors," he said.

Willis feels that many of the older stars can be better identified with. "Some identify with a star so much that their life just isn't complete unless they have every picture of them," he said.

Since people usually buy what they see, the release of a trendy new album or movie influences what the store sells, McKee said.

Willis specified that "Classics sell mostly, but of course there's an immediate rush with the release of a big new movie. It usually lasts

about six months for us." Classics, however, retain staying power.

"I get asked about the newer stars more often, but the vintage star fans are more serious about one particular performer," McKee said, pointing out Marilyn Monroe (whose material tends to sell very well) as an example. "Anyone that collects the newer stars would be likely to go on to others."

In terms of collecting, prices range from the affordable to the outrageous. Standard photo items sell anywhere from \$3.50-\$35, while photos autographed by vin-

tage stars from the 1930s or 1940s would be in the thousand-dollar margin.

Some of McKee's greatest sales include a script of *For Whom the Bell Tolls*, signed by the cast and crew, that sold for \$25,000. Another document, signed by the Beatles from a 1963 tour, sold for \$23,000. James Dean photos sold at \$2,000.

Willis recalls a 1930s Disney Studio's guest book, filled with signatures, that his store auctioned for \$85,000. "It had all kinds of

people in it; like Eleanor Roosevelt and Albert Einstein. When the party was over, the studio was just going to throw it out," he remembered. The guest book was kept by a Disney employee and eventually found its way to Willis' bookstore. His bookstore also sold an original *Casablanca* poster for \$5,000.

Although collecting can be an investment, most people choose to collect something that they have a genuine interest in as well, McKee said. "I really don't think most collectors are doing it for the investment."

History on display at art gallery

By Robby Weisskirch

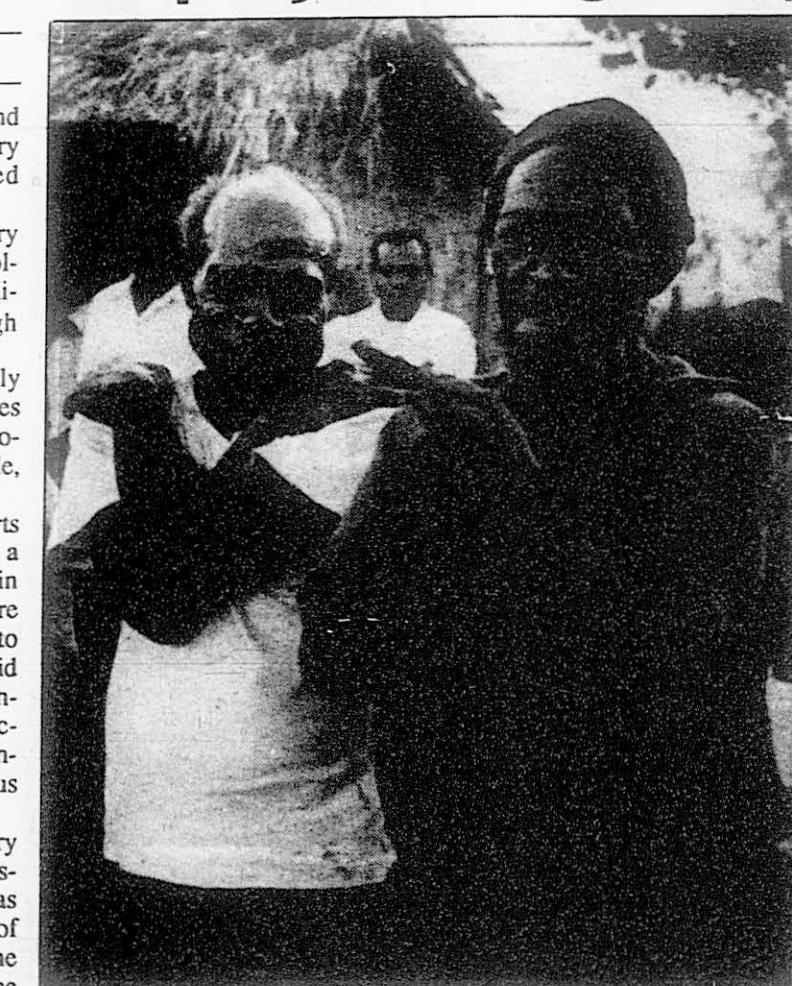
If a picture is worth a thousand words, then the Fine Arts Gallery contains an unabridged dictionary's worth.

Currently, the Fine Arts Gallery is exhibiting "The University Collects: Photography from the University of California" through Feb. 7.

The pictures were originally donated from all nine UC campuses to the California Museum of Photography housed at UC Riverside, but now they're here.

The photographs in the Fine Arts Gallery are many, but are only a mere sampling of the 20 million in the collection. The photos were chosen so that they "would appeal to the majority of students," said Phyllis Lutjeans, a gallery representative. The sampling includes pictures of captivating landscapes, intricate architectures and famous portraits.

Like an exciting pictorial history book, the collection shows the history of the United States as well as the history of photography. Some of the earlier photographs, from the mid-1800s, are on daguerreotype and, as technology advanced, pictures were taken on albumen print.



South Fore Man, New Guinea taken by Paul Ekman in 1968 is one of the many photographs currently on display at the Fine Arts Gallery.

See PHOTO, page 21

EUROPE

ROUNDTRIP FROM LOS ANGELES TO

London \$449

Frankfurt \$489

Amsterdam \$498

Paris \$590

For more information contact

CONTACT TRAVEL

856-4237

University Center,

University of California

Irvine, CA 92717

Martin Luther King Jr. International Feast Day Special

Served at Gateway, Lumbermill, and Backlot.



Chicken
Blackeyed Peas
Greens
Mashed Potatoes
\$3.50 per person

UCI Dining Specials of the Week

January 25 - January 29

GATEWAY
Mexican Combination
Two Tacos, Rice, Beans
\$2.50

BOGART'S
Antipasto Salad

\$3.49



Frank Hamilton, Lisa Zane and Mark Arnott star in Craig Lucas' new play, *Prelude to a Kiss*, which plays at South Coast Repertory through Feb. 18.

Play explores tender moments

By Jenny Hill, Staff writer

Somehow love, as real as it may be, seems like a fairy tale.

Craig Lucas' *Prelude to a Kiss* captures that theme and turns it on its ear. Yes, it is the story of boy meets girl and they fall in love and get married, but there are a few important and unconventional plot twists.

What is not conventional about this show is the cast and crew. In a trite description of its uncommon flow and energy, words like tremendous and fabulous come to mind. Granted, professional theater is supposed to present a perfect picture and believable actors. This production does more than that: it clicks.

Mark Arnott brilliantly brings slightly neurotic but infinitely likeable Peter to life. Everybody knows someone like Peter, but Arnott's vulnerable portrayal makes the audience empathize with him rather than simply recognize him.

Lisa Zane has mastered the for-

midable task of a three-part role: playing fun, forgetful and surprisingly complex. Rita, somebody trying to impersonate Rita, and the impersonator acting as himself in her body.

Frank Hamilton, the Old Man who has mysteriously changed souls with Rita, does such a believable job portraying Rita's personality in an old man's body that it is difficult to accept him as the old man. Difficult, but not impossible.

Teri Ralston and Hal Landon Jr. humanize the zany but good-intentioned Boyles—Rita's parents. These two look and sound like the type of comically horrifying in-laws whose favorite phrase is "we're teasing you."

Michael Canavan's interpretation of Peter's best friend Taylor is by far the weakest of the cast. That is not to say that he is not funny. He is just monotonously flat since the script leaves his character little choice.

The cast is energetic and believable. The set changes go in unseen split-second flashes like movie

clips that simply switch from one scene to the next. Even the costumes are wonderful. But every review has its harsh words and judgments. This one is no exception.

"We certainly didn't plan on all four of us working together here, but we've been lucky," Read said.

The problem is the script. It is unfair to castigate a cast for a script that the reviewer is not comfortable with. I think the cast is fabulous, especially considering some of the improbable situations they must deal with.

The story follows the meeting and brief courtship of Peter and Rita. A strange old man asks to kiss the bride and when he does, nothing is the same. Peter and the audience sense a change in Rita. Without giving too much of the plot away, let it suffice to say that the twist requires a leap of the imagination that the audience resists between the revelation and the second intermission. If the story proceeded immediately from the discovery to the beginnings of resolution the audience would not have to try so

See PRELUDE, page 19

Four UCI grads take part in Repertory's new production

By Michael Rydzynski, Staff writer

Cynthia Blaise, Lisa Black, Paul Read and Robert Ornellas, graduates of UCI's drama masters program, make up more than half the ensemble cast of *Prelude to a Kiss*—which currently plays at South Coast Repertory. Working for a nationally renowned professional theater company is a definite plus for their careers.

"It's real special for the four of us to be in this cast together," said Blaise, who graduated last spring with Black and Ornellas and one year after Read. "We're climbing our way up the ladder together and we've known each other very well. When you get into a new situation, the people don't know what you can do—they don't know your work. But we know our work, we know what we can do, and it's very exciting," Blaise added.

"We certainly didn't plan on all four of us working together here, but we've been lucky," Read said.

Although all four held major roles in UCI's production of Anton Chekhov's *Three Sisters* in 1986, *Prelude to a Kiss* is the first professional production all four have appeared in together. In addition, they have appeared in pairs and trios in various UCI and SCR productions.

"I think it says something nice about Irvine actors, [that] four out of seven in the ensemble are from Irvine."

—CYNTHIA BLAISE

Including backstage work, *Prelude to a Kiss* is Ornellas' second SCR production and the others' third.

"I think [the play is] very life-affirming," Black said. "It's funny and romantic, but not in a sentimental way. And it makes you stop and think."

See GRAD, page 19



Kahn Kim/New University

UCI graduates Robert Ornellas, Cynthia Blaise, Lisa Black and Paul Read make up most of the ensemble cast of *Prelude to a Kiss*.



By Gary Downs

With the tragic death of guitarist D. Boon in 1985 fans mourned the loss of underground rock favorites the Minutemen. But this discounts the band's surviving members.

George Hurley and Mike Watt are perhaps the tightest rhythm section in rock. FIREHOSE, their new band with upstart Ed (Fromohio) replacing D. Boon, is very much an extension of the Minutemen—with Ed's youthful exuber-

FIREHOSE maintains quality

ance replacing Boon's hard-edged political viewpoints as the central cause of their changing sound.

Still, it seems FIREHOSE hasn't quite found a home yet, but "if n," their latest, brings them a giant step forward.

"Ragin' Full On" was the product of the Hurley and Watt rhythm section rehearsing with their new guitarist, and Ed taking the time to develop as a songwriter. Many of their songs are more like workouts than actual songs. Yet despite flaws, the album has incredible potential.

"if n" shows just how much they have developed that potential over the past year. This album gives the impression that the band has begun to play as a unit. "if n" not only shows much more identity than their previous outing, but also showcases Ed's growth as a song-

writer. It would seem that he has almost caught up with the task of playing with Hurley and Watt.

FIREHOSE rocks quite a bit more than last time. The band's paying more attention to Ed's pop sensibilities. Yet thankfully the funky jams that were a mainstay of the Minutemen remain intact. In a world where the tendency is to compromise music quality for record sales, FIREHOSE has managed to stick to their musical ideals for the most part.

Though the minimalist tendencies of FIREHOSE will keep them off the radio, that is radio's loss. In a better world songs like "Sometimes" and "Windmilling" would be in the top forty.

But this way it's a secret so just sit back and enjoy. Someday these guys may even reach their potential.

GRADS: 'Starting all over again'

Continued from page 18

tal way. And it makes you stop and think."

"It recognizes the humanity in everyone, the struggle for recognition and survival," Ornellas added.

Writer Craig Lucas and director Norman Rene are held in high esteem by the Irvine quartet. "[Lucas is] an excellent writer [who] takes ordinary things in life and adds some fantastic element to them," Read said.

"He writes conversations that are natural but not boring," Black said. "And the director just seems to have a magical touch. I really believe in this project."

"He's hot," Blaise said of Lucas. "And I've loved everything these guys have done. I think they're

brilliant. This is a neat company, a very talented company, and it's a pleasure to come to work here," she said.

"This is certainly a twist for us," Blaise said. "[It's as if] we're starting all over again. It's a humbling experience, but it's also an exciting one to be part of a major new production, to take part in the birth of a new play."

"There are rewrites still going on," Black said. "The fun part is getting to play six different roles. But the quick set changes are terrifying."

Unfortunately for all four, work in professional theater doesn't quite pay the bills, so they seek employment elsewhere in the daytime. Black works as a transcriber for a deposition court reporter.

PRELUDE: 'It clicks'

Continued from page 8

hard to believe.

That is not to say that the audience does not believe. This play is an adult fairy tale about the depths of love for a mate, love of a child and the love of life itself—all basic human qualities that the audience readily identifies with. And like all fairy tales, this one has a happy ending.

Despite the sudden stretch of imagination, adult audiences should appreciate the bawdy as well as the situational humor and the triumphant tender moments portrayed realistically.

Craig Lucas' *Prelude to a Kiss* runs at the South Coast Repertory through Feb. 18, Tues.-Sat. at 8 p.m., and 2:30 Sat. and Sun. and 7:30 p.m. Sun.

Read waits on tables at UCI's University Club, Ornellas "slings hash" at an Italian restaurant in Costa Mesa and Blaise is currently between jobs.

They fantasize what they would like to do outside the theater: Black would like to be a painter, Read and Ornellas think about being rock singers and Blaise wants to be a "torch-song singer—but God didn't give me the equipment," she lamented.

Yet they all remain committed to their collaborative art of acting. Their determination certainly shows in the growing Irvine dominance of SCR's casts. "I think it says something nice about Irvine actors, [that] four out of seven in the ensemble are from Irvine," Blaise pointed out. "I heard they auditioned a lot of people for those roles."

Including Mary Anne McGarry, a UCI drama instructor who plays Leah in the third and final act of the play, there are a total of five present and former UCI actors in the 19-member cast.

In addition, UCI intern Joel Goldes is part of the play's production staff.

"It's great to be building this communication, this support between the university and [professional] theater," Black said.

IF YOU'RE DRIVEN
WE'RE OPEN



Drive Thru
Now Open

quality,
freshness,
perfection...

PINKY'S

On Campus Drive
Directly Across From UCI

SEASON
TICKET
Sports Bar & Grill



YOUR UCI
BASKETBALL HEADQUARTERS

U.C.I. vs Fresno Jan. 23
PRE GAME and POST GAME PARTIES
AWAY GAMES TELEVIEWED
ON ALL COLOR MONITORS
• SPECIAL DRINK PRICES WITH UCI I.D.

Happy Hour 5:00-7:00 Daily
FREE Hors d'Oeuvres

SUPER SATURDAY AND SUNDAY
SPORTS BRUNCH 9 AM-3 PM

POOL TABLES • BACKGAMMON • DARTS
ELECTRONIC GAMES • BASKETBALL COUNTDOWN
ALSO VIDEO DISCO DANCING AFTER 9:00 PM

FEATURING VIA SATELLITE ON 11 GIANT FULL SCREENS
ALL MAJOR TELEVISION OR CLOSED CIRCUIT GAMES AND
SPORTS EVENTS 'YEAR ROUND'

OPEN 7 DAYS A WEEK
AFTER HOURS FRI. & SAT. NIGHTS
4148 Martingale Way • Newport Beach • 476-8831
(Near O.C. Airport off MacArthur, near El Torito)

KAPLAN PUTS YOU IN SCORING POSITION.

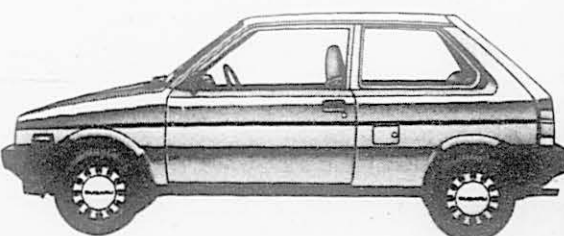
KAPLAN
STANLEY H. KAPLAN EDUCATIONAL CENTER LTD.

ENROLLING NOW! Visit us at our center, 688
El Camino Real, Tustin, CA 92680. Or call us
days, evenings or weekends. Our phone num-
ber: (714) 731-3059.

SUBARU. Justy fits your needs and pocketbook

If you've been looking for a car you can afford, but don't want to settle for a car you can't trust, look at the Subaru Justy DL. You can count on a Subaru. In fact, for the past six years, Subaru has been one of the highest-rated cars in customer satisfaction.* It's easy to see why:

- 3-cylinder inline engine with management system and fully transistorized ignition
- Smooth-shifting 5-speed manual front-wheel-drive transmission
- Fully independent suspension with MacPherson struts, rack-and-pinion steering and power-assisted brakes with front ventilated discs for a fun-to-drive feeling
- Halogen headlights and two-speed windshield wipers/washer keep your view well-lighted and clear
- Fully reclining front bucket seats highlight the roomy interior
- Fold-down rear seat expands the cargo area
- Easy-to-read analog dashboard with "tell-tale" indicators



Justy DL

\$5,495*

For a car you'll love living with, see a Subaru Justy DL today!

*Source: J.D. Power and Associates Customer Satisfaction Index 1981-1986

THE 1988 SUBARU.
Inexpensive. And built to stay that way.

*Suggested retail price. Price does not include taxes, license and doc fees.
Dealer's actual price may vary.

SEE YOUR ORANGE COUNTY
SUBARU DEALER TODAY



AUDITIONS

SINGERS • DANCERS • INSTRUMENTALISTS
TECHNICIANS • VARIETY PERFORMERS

Kings Productions, the world's #1 producer of live entertainment, is holding auditions for the spectacular 1988 season of GREAT AMERICA, Santa Clara, California.

Pay is good and jobs are plenty (we'll even provide one round trip airfare if you're hired to work at a park over 250 miles from your home). Make your audition a show we can't do without!

NORTH HOLLYWOOD, CALIFORNIA
Wednesday, February 3
Debbie Reynolds Studio—North Hollywood
6514 Lankershim Blvd. (1 block north of Victory)
Singers: 10 AM; Dancers: 1 PM
Instrumentalists, Specialty Acts, 1 PM

For additional information:
Great America Entertainment Office 408/988-1800
Kings Productions 800/544-5464

KINGS DOMINION • CAROWINDS • CANADA'S
WONDERLAND • KINGS ISLAND • GREAT AMERICA
AUSTRALIA'S WONDERLAND ©Kings Productions 1988

EDUCATION ABROAD PROGRAM STUDY ABROAD WHILE ENROLLED AT UCI

Brazil, Canada, China, Denmark, Egypt, France, Ghana,
Hong Kong, India, Indonesia, Israel, Italy, Kenya,
Korea, Mexico, Norway, Peru, Portugal, Spain,
Sweden, Taiwan, Thailand and Togo.



For Applications and Information visit EAP Office, Trailer 504,
856-6343

DEADLINE FOR ABOVE EDUCATION ABROAD PROGRAMS
IS:
JANUARY 29, 1988

Cinema Scope



Chris Mulkey, John Jenkins and Karen Landry star in *Patti Rocks*, the sequel to *Loose Ends*.

Patti Rocks takes profanity too far

By Debbie Osberg

Patti Rocks is a sequel to the 1975 film *Loose Ends*. The same actors, producer, director, writers, cinematographer and editor were used on this film which is set 12 years later.

The two main characters are men who have been buddies for many years.

Billy, played by Chris Mulkey, is a married father of two girls who cannot control his hormones and lures any woman he can into bed, which is where the trouble begins. One of his playmates gets pregnant, not knowing that Billy is married and wouldn't want her to keep the baby.

Billy persuades his friend Eddie, played by John Jenkins, to drive all night long to discuss the pregnancy problem with his girlfriend Patti, played by Karen Landry. The dialogue is entirely about sex and the men's attitudes, which give the impression that sex is the only reason to live.

The obscene language of the dialogue earned *Patti Rocks* an "X" rating by the Motion Picture Association of America before it was appealed. In fact, one member of the board went so far as to tell the director that the only way he could get an acceptable rating was to release it as a silent movie.

However, after undergoing the appeal process, the MPAA overturned its first decision and has brought about an "R" rating without demanding any changes in the

script or dialogue.

The result is that the language is excessive and profanity can be heard more times in this film than in any Eddie Murphy and Richard Pryor films put together. Even though Director David Morris believes the language is realistic and necessary it makes the movie unbelievable in the beginning, although the shock wears off toward the end.

In addition, this film was made on a \$300,000 budget which is very cheap—and it shows in the final product. The acting, for the most part, is horrible, and the actors are not pretty people.

The only breath of fresh air is Landry. She seems the most natural and convincing and shows that women do make sexual choices and that men no longer have full control over women. Unfortunately, the film offers no concrete answers to Billy's problem.

The ads for *Patti Rocks* say it's an adult comedy about honesty in sex but there is almost no sexual

honesty in it at all. Billy isn't honest with his wife, with Patti or with any other one-night-stand. Eddie isn't honest with Billy about his feelings and actions. Patti thinks she's being honest by being totally independent and open to her sexual beliefs.

Overall, this movie is like a very low-life *Thirtysomething* much in the same vein as a high school coming-of-age film.

The only reason this film should be seen is to get a first-hand look at how certain men in our society view women, although this can be better accomplished by listening to a high school boys locker room conversation.

There are a few funny scenes and some good questions are brought up but the best aspect of the film is that it's only 86 minutes long.

Enduring an hour and a half of bad acting, obscene language and sexist attitudes might be okay if the film is free but it's a rip-off at the \$6 ticket price.

APPLICATIONS ARE NOW AVAILABLE FOR THE POSITION OF HOUSING OUTREACH PROGRAM COORDINATOR FOR 1988-1989

Housing Support Services has a Student Program Coordinator position available. This position is responsible for the coordination of the Housing Outreach Program. The Housing Outreach Program is an established program and focuses on presenting prospective students with a comprehensive picture of housing options at UC Irvine. This position is responsible for the coordination of a staff of volunteers who are trained to give tours of the residence halls. The position also encompasses the organization of other outreach efforts such as housing presentations and student panels. We think this is an exciting program and offers the successful applicant a unique opportunity.

If you are someone who enjoys...

- Working with people
- Coordinating functions
- Have a strong commitment to the UCI campus
- Have demonstrated organizational ability
- Have experience in campus leadership, program development and evaluation
- And enjoy working in a team setting

then you may be just the one we are looking for!

Applications will be available in the On-Campus Housing Office, 232 Administration Building, from January 19-29. This is an employment opportunity for students which requires approximately 15 hours per week and provides a stipend of \$2,000 for the year of Winter 1988 to Winter 1989 (this does not include the summer months). The application deadline is 5 P.M. Wednesday, January 29.

For more information, please contact Eric Nusbaum, Housing Outreach Program Coordinator for 1987-88 in 232 Administration Building, 856-5167.

The Thai-Touch



Cuisine

Fine Thai Food Five Minutes Away

Complete Lunch Special
Now Only \$4.95
Newport Hills Center

2616
San Miguel Dr.
640-0123

OPEN 11:30-9:30 PM Mon-Thurs.
11:30-10 PM Fri. • 5-10 Sat. • 5-9 Sun.

**SPEND SPRING
BREAK LYING
ON YOUR BACK . .**

**ON THE BEACH IN
SUNNY MEXICO**
FOR AS LOW AS \$199.00

FOR MORE INFORMATION CONTACT
OUTROADS TRAVEL
UNIVERSITY CENTER
IRVINE, CA 92717
856-4237
MONDAY-FRIDAY 9:00am-5:00pm

UCI STUDENTS!

★ **TOP COMICS LIVE on stage!** ★

ADMIT TWO Complimentary
Mon, Wed, Thurs, Sun Nights Only
ADMIT TWO FOR ONE
Fridays, 3rd Show Saturday
NOT VALID: Special holidays or Celebrity events
1st and 2nd Show Saturday

Our 11th Hilarious Year!
Showroom Minimum -
2 drinks per person

Call For Reservations
and Showtimes

2122 SE Bristol
Newport Beach (Corner of Birch)
714-852-8762

SEE THE WORLD

**UCI Travel
Adventure
Film Lectures**

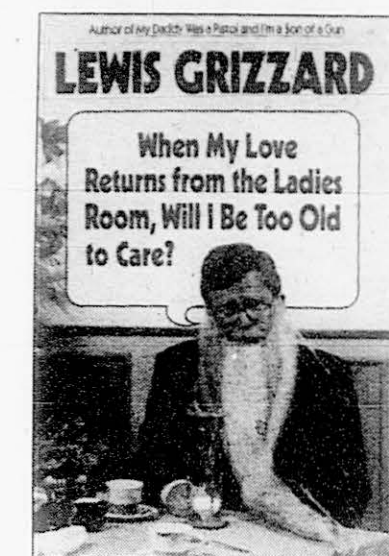
Calling All Outdoor Types!

From the Yukon to Yellowstone is one of the most dazzling overland routes in the world. Experience this exciting journey narrated in person by William Stockdale, Yale University graduate, one of America's foremost travel film producers.

Tuesday, January 26, 7:30 p.m.
South Coast Comm. Church
Auditorium-Bonita Cyn. Rd.

General admission \$6; UCI faculty/staff, seniors \$5
Students \$5
UCI students wearing any UCI clothing
(t-shirts, sweatshirt, hat, etc.) \$1
UCI students in UCI clothing also wearing sturdy
hiking boot \$5.00

Lewis Grizzard returns with more wisdom



By Jon Nalick, Staff writer

Lewis Grizzard says that writing a daily column "is like being married to a nymphomaniac: for the first two weeks, it's fun."

Well, that's what he says. But read his latest book, *When My Love Returns from the Ladies Room, Will I Be Too Old to Care?*, and you can see after 10 years of writing that column he's still having fun.

For those unfamiliar with his column or his previous works (which include *Elvis is Dead and I*

Don't Feel So Good Myself and My Daddy Was a Pistol and I'm a Son of a Gun), Grizzard makes his living by looking at the world through a magnifying glass. The little things in life are what interest him most; and in his view of the world, it often appears that common sense isn't.

He writes about the differences between garbage and trash,

"A funny thing happened to me in New York. Everybody was nice to me."

— LEWIS GRIZZARD

whether ginger ale and sympathy can cure the common cold, why car dealers should not be allowed to appear in their own commercials and why Howard Cosell deserves an apology from America.

He uses down-home, Southern humor to chide people for believing everything they hear, and for avoiding the things they don't want to hear.

In one column, he defends the much-maligned city of New York, explaining that the city he went to was not the same one most people

hear about.

"A funny thing happened to me in New York," he begins. "Everybody was nice to me."

In another column, he explores the recent media hype of condoms as protection from AIDS, to which many of his readers had objected. Grizzard needles colleges for sponsoring educational activities which

included "Pin the Condom on the Man" games. However, he decides the education can save lives and is therefore sensible. He adds that National Condom Week would do well to begin on Valentine's Day.

He comes across as a good-natured, if opinionated, uncle; his writing is warm and personal. So much of Grizzard's personality comes across that you cannot mistake what kind of person he is.

And if you know and like someone like him, you can't help but enjoy the book.

PHOTO: A diverse pictorial history

Continued from page 17

Photography then evolved to gelatin silver print, and the collection carefully displays the photographic evolution. The focus, however, is on photographs which range from historical figures to the moon.

Interestingly, the well-known people in the photographs include John Phillip Sousa (signed and with a sniglet of music), Henry Wadsworth Longfellow, Henry Clay and Jefferson Davis (taken after the Civil War). Also, there is an intriguing photo of the moon in 1888, a snapshot of Laguna Beach in 1895 with tents on the seashore and sparse housing, and the oldest known picture of the San Francisco skyline.

But, perhaps the most fascinat-

ing photographs are the out-of-ordinary ones. A picture of Greta Garbo filming a love scene can be found, as well as a photograph of Pavlov's laboratory with dogs preparing to salivate.

One section of the Fine Arts Gallery has a series of pictures of Native Americans engaged in traditional ceremonies and in their everyday life.

Adding to the diversity are the unique still-life photographs, the almost-1960s pop art and the poised people pictures.

A bulk of the exhibit is aimed at photographs of interesting but ordinary people.

The pictures never tell what should be seen; but rather leaves interpretation to the audience. The subjects are as diverse as the photo-

graphs' origins.

The photographers are not, however, UC students or graduates per se, but famous figures like Ansel Adams, Edward Anthony and Carleton E. Watkins. The photographers all used their own style to portray their feelings on the subject.

Students should take a peek at the exhibit to gawk at things in the background of some of the photographs as well—if for no other reason. There are ancient clothes, cars and diagrams.

The diversity of the collection should definitely appeal to anyone, and the exhibit is well-worth the time. After all, where else can you get a history-astronomy-theater-biology-landscaping-psychology lesson in a few minutes?

IT'LL MAKE YOU LAUGH . . . IT'LL MAKE YOU THINK

SUNDAY NIGHT

ALIVE

JANUARY 17 & 31
7:30 pm

AN EVENT FOR COLLEGE PEOPLE

SOUTH COAST COMMUNITY CHURCH ROOM 102
5120 Bonita Canyon Road Irvine 954-7500

UCI
Bonita Canyon Rd.
South Coast Community
PCH

FROMEX

**ONE HOUR
PHOTO**
854-FILM (854-3456)

Professional
Portrait Services
Family Portraits
(at our place or yours)
Application
Pictures
Call now for
appointment.

coupon

\$300 OFF
36 exp.

\$200 OFF
24 exp.

\$100 OFF
12 exp.

When you bring us your
color print film for
processing and printing
N/A disc. Limit 2 rolls
NO OTHER OFFERS OR
DISCOUNT APPLY
Expires Feb. 1, 1988

**SEBASTIAN
LAUNCHES
Romantic**

There's new order to hair
Strands appear from nowhere
Wigs float across the face
moving and shaping hair like a veil
Use Grease® to seduce and
Shape® to tame
Now's the time at an
Artistic Center Salon® Visit us
and catch the future

**JOHN
PAUL**
HAIR DESIGN

**Generous
Student Discount
Open Sundays**

Campus Plaza
854-8114

We're a
Sebastian Artistic Center
The salons that make the difference between ok and extraordinary

JAZZ

Now 10% Discount with U.C.I. I.D.

capezio

Costa Mesa
South Coast Plaza
714.540.2575
Cupertino
Valico Fashion Park
408.996.0466

"HAVE A PARTY"

"LET US BE YOUR HOST"

**FOR A LIMITED TIME WE ARE OFFERING
KEGS OF VEER FOR JUST \$60 (with UCI I.D.)
TO GROUPS OF 15 OR MORE.**

**WE HAVE THE BEST SOUND SYSTEM
AND LARGEST DANCE FLOOR IN O.C.
THE FRIENDLIEST PLACE IN ORANGE COUNTY**

(714) 847-4300
7492 Edinger Ave.
Huntington Beach, CA 92647

Champions
Dining • Dancing • Cocktails
and Sporting Events

405
Edinger
Beach

UCInk

A beginner's guide to UCI's 'Backlot'

Ah, I hear the Backlot, that infamous haven of comestibles and discourse, will be soon closed for remodeling. Presumably this is so the Powers That Be can at last vault UCI into the tourism biz by turning the University Center into South Coast Plaza East.

I won't miss the vittles during the remodeling period, but I will sorely miss the human-watching. There just isn't any better place to witness Irvine lifestyles than at the afternoon Backlot scene, not even in the tunnels on Friday night. As a chum has told me, "The Backlot's okay, but not for eating."

The most fascinating aspect of the Backlot is its firmly established set of rules for sitting on the patio, the "observation deck." For instance, solitary patrons invariably choose the tables around the outside edge, which overlook the picturesque Concrete Slab (what seniors thought was a useful present before they hit on the idea of a bronze egg target).

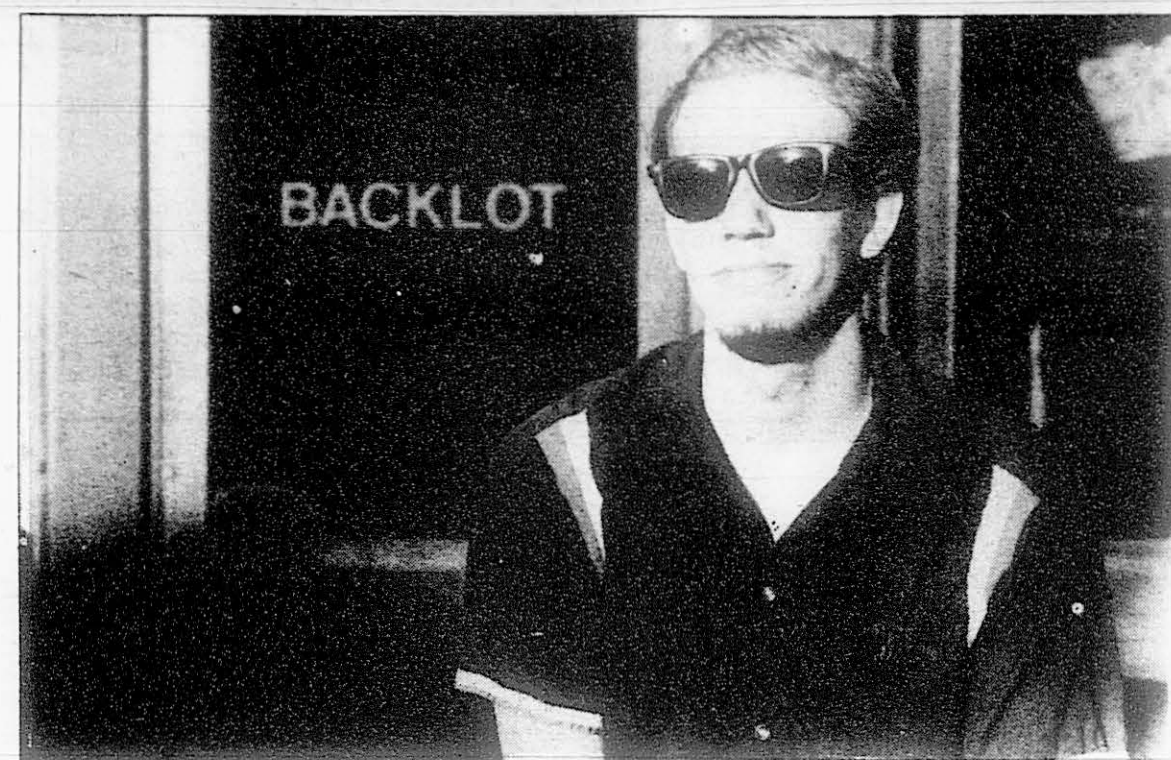
It's hard to say why this behavior has evolved. Perhaps these edge-sitting singles are hoping to find a perspective companion on the paths below. Curiously, these same rules apply if one is a faculty

member, either alone or with others. This correlation's cause is beyond my deductive powers.

Another major social group is the "people who wear black." I'm sure we're all familiar with this long-standing clan. This species always travels in groups and always sits outdoors in the middle of the patio, where they can be seen most advantageously. They do welcome persons not wearing black to sit with them, but only if they are Humanities TAs or KUCI DJs. And please, no pastels.

There are other sociological groups within the Backlot genus: the drinking game players in the fenced-in "playpen," the "studiers" (again, the outside edge tables), the bio majors (oops, they're in Gateway). But the most fascinating Backlot species is the Greek.

This group, the most territorial of UCI's population, has claimed an entire area of the Backlot to themselves, which no outsider dares violate. Secluded away from the main patio, the east patio area is always the most crowded section in the afternoon, and is filled entirely with Greeks. Every table is brimming with grinning sweat-shirted,



Bryan Mar/New University

Eric Broome

short-panted bodies, practicing the various mating and bonding rituals of the tribe.

Does anyone dare intrude upon this sanctuary? Apparently not. The boundary remains strictly defined. There is one buffer zone, however, at the tiny spot in front of the Side Pocket. There are only six or seven tables here, but these constitute a vital stronghold for the army who

claims them. As of yet, the Greeks seem to be winning the struggle, but the "Nons" may rally.

So do me a favor. Next time you're "making the scene," ignore your mind set and sit at the nearest empty table. This way, when (appropriate fanfare swell) Phase III is completed, we will be prepared and can avoid complete social anarchy.

UCInk is a weekly feature of the New University. Columns written by UCI faculty, staff and community are eligible to be printed. Columns should be up to three pages long, humorous and UCI campus- or community-oriented. Submit columns to the features editor at the New University office. The New University reserves the right to edit or refuse inappropriate columns. Author is responsible for published column and agrees to assume any and all responsibility for claims occurring therefrom against the New University.

Coming Up

Wednesday, January 20

Novelist Jurek Becker reads (in German) from his works at 2 pm in 126 Humanities Office Building. Admission is free.

Mitchell Kronenberg of the UCLA School of Medicine speaks about "Genes that Rearrange in T-Lymphocytes" today at 4 pm in F114 Medical Science I.

The Young Democrats Club meets tonight in Humanities Hall 210 at 5 pm. For more information, call 957-0384.

The first meeting of 1988 for the Economics Students Association takes place tonight at 5 pm in IERF BO11. Internships will be discussed.

Tom Van Sant from the Center for Advanced Visual Studies at MIT sees through the "Eyes on Earth from Space" tonight in the Science Lecture Hall at 7:30 pm. Tickets are \$6 for general admission, \$5 for faculty, and \$4 for UCI students.

"Orange County in 2000 and Beyond" is discussed tonight in the University Club at 6 pm. Jim Cooper, Vice President for Community Affairs of KOCE-TV, leads the discussion. For reservations, call 644-8743.

Thursday, January 21

"The Biomedical Venture: Charting the Course" is a business seminar that takes place today in the University Club at 1:30 pm. For reservations, call 856-5932.

R. Buxton, visiting assistant professor offers a seminar on the "Flow and Motion Effects in Fast Imaging" today at 2 pm in F108 Medical Sciences I.

The winner of the Academy Award for best documentary in 1987, *Women For America, For The World*, will be shown in the Women's Resource Center at 2 pm.

A look at the "Internal Changes in the Soviet Union" will be viewed by Robert Scheer, staff writer from the Los Angeles Times, today at 3 pm in Social Sciences

Tower Room 640. For more information contact the Global Peace and Conflict Studies Office at 856-6410.

"An approach for Determining the Roles of DNA Binding Protein in Yeast Cells" is offered today by Tim Formasa of the University of Washington. The lecture will be given at 5 pm in 475 Steinhaus Hall.

As part of the UCI Bicentennial Lecture Series, Nathan Tarcov of the Naval War College will speak on "Federalists, anti-Federalists and Foreign Affairs" at 8 pm in 178 Humanities Hall.

Friday, January 22

Lily Tomlin's *The Search for Signs of Intelligent Life in the Universe*, as well as excerpts from David Letterman's Holiday Film Festival are shown tonight at 7 pm in the Women's Resource Center.

John Huston's *Fat City* is shown tonight in Social Science Hall at 7:30 and 9:30.

Classified

JANUARY 18, 1988 23

SERVICES

RESUMES, PAPERS, EDITING
Spell/Grammar Check
851-1041

RESEARCH PAPERS. 15,278 Available!
Catalog \$2.00. Research, 11322 Idaho,
#206XT, Los Angeles, 90025. (213) 477-
8226. Ext. 33. VISA/MC or COD.

TYPING

PAPERS, THESES,
RESUMES & MORE.
RUSH JOBS
WELCOMED
\$1.50 pg & up
UCI AREA!
770-5795

TYPING. THESES, PAPERS,
LEGAL, RESUMES. 20 YRS.
SECRETARIAL, WP EXPERIENCE.
CHRISTIE'S 951-9151.

ADVANCED WORD PROCESSING
\$1/PG. FORMER EXC. SEC.
CALL SALLY 777-1506.

PERSONALIZED RESUMES,
LASER PRINTED THESES -
WrightWord 497-7130.

• TERM PAPERS
• REPORTS
• RESUMES
• TYPING
• WORD PROCESSING
Next Day and Rush.
Many other services available.

INNOVATIVE
BUSINESS
PROPERTIES
3701 BIRCH STREET
NEWPORT BEACH, CA
ASK for Stephanie, (714) 756-3211.

FOR SALE

FOR SALE: '82 HONDA 450, 8K miles.
Good condition, easy to park! \$1,000. Call
Gary at 380-1279 / 786-3662.

'80 RABBIT 4 DR, YEL.
SUNROOF CASS, XLNT COND.
85K. \$1900 854-5525.

Twin bed good condition for \$50.
Call Kamat 786-0807.

1981 YAMAHA 185 EXCITER
1600 mi. Like NEW \$450.00
FIRM Eves. & weekends (714)
551-5580.

'72 BMW 2002Gti 74,000 mi.
Sunroof, AC \$3500 OBO 642-
1257 Brian.

'81 Honda Accord 4 dr A/C
AM/FM/CASS, 5 spd., Radials.
\$2400. 838-4927

ROSSIGNOL ASCENTE SKIS,
w/Tyrolia 470 bindings, Poles and
Salmon Ski Bag-Skis & Bindings
NEVER USED! Call Chris 856-
0735.

HELP WANTED

Attn: Child Develop / Nursing
Pupils Needed: In Home Child
Care for 8 mon. Twins - 3 days a
week Irvine Area (Day) 250-3153
(Night) 651-0703.

BABYSITTER WANTED FOR TWO
9-YEAR OLDS TUES/THURS 3PM-
5:30PM \$6/HOUR IN TURTLE
ROCK CALL JULEE 752-5300.

Telecom now hiring
telemarketing account executives.
Full time or part time working in
your home or in our offices no
experience necessary but preferred.
Entrance level positions up to
\$1,400 per month. Call (714)
648-2152.

CHILD CARE 3 TO 6 PM
WEEKDAYS Home on campus
\$4.25/hr. References (714) 759-
9397.

HIRING! Government jobs - your
area. \$1,500-\$68,000. Call (602)
838-8885. EXT 4079.

P/T COURIER FOR TRAVEL
AGENCY. 9AM-12NOON MON-FRI
\$5/HR. CALL INEZ (714) 250-
0525.

STUDENT ASSISTANT: PART-
TIME JOB STARTING IN DEC. OR
JAN. FOR OFFICE CLERICAL,
DRIVING, AND TESTING DUTIES;
MUST HAVE 3-4 HR. SOLID
WORK BLOCK, AT LEAST 3
DAYS/WK, AND BE ELIGIBLE
FOR COLLEGE WORK STUDY.
UCI DISABLED STUDENT
SERVICES, 105 ADMIN
BUILDING.

ENTHUSIASTIC RECEPTIONIST
full/part time typing helpful, good
telephone skills. In a busy
exciting hair salon ESSENTIALS
FOR HAIR 730-6630.

RESPONSIBLE FEMALE TO
BABYSIT 16 MON. OLD IN MY
HOME. 2 DAYS A WEEK, 4-6
HRS. REFERENCES REQ. 552-
3768.

CHILDCARE NEEDED: in my Laguna
Beach home M, W, F, 6 am - 2 pm. Non-
smoker, references. 494-7057.

TICKET SELLERS (RELIABLE)
TUES/THURS AFTERNOONS.
ALSO M-F 10-2 SHIFT. Will be
bonded by UCI police. Experience
with money preferred. Inquire at
BREN CENTER TICKET OFFICE
856-5000 ask for Kim or Marie.

COMPUTER GRADUATES
HELP YOURSELF FIND THAT
FIRST ENTRY-LEVEL JOB
CALL 213-860-5776
COMPUTER CAREER SEMINARS

★ ON-CAMPUS POSITION ★
RECEPTIONIST
(work study only)
Work in an exciting
environment with a
diversified staff.
Hours flexible.
New University
3100 Gateway Commons
Ask for Lisa
856-4285

MAKE \$360 AND UP WEEKLY
mailing circulars from home part-time.
For info/application send stamped reply
envelope to: Dept. 7, Box 34641, LA
90034.

RESPONSIBLE FEMALE TO
BABYSIT 16 MON. OLD IN MY
HOME. 2 DAYS A WEEK, 4-6
HRS. REFERENCES REQ. 552-
3768.

Your \$50 can grow to thousands in
months risk-free! Your investment
returned in days. Nothing to lose,
everything to gain. NOT A
GIMMICK. Curious? Call Dennis
eves 673-3578.

CHILDCARE FOR 4-YEAR-OLD.
In my Laguna Hills Home.
Afternoons flex hrs M-F Ref. 643-
8957.

ANNOUNCEMENTS

CLASS AD RATES
NEW UNIVERSITY • 856-4285
Students \$1.50 per line
Campus \$2.00 per line
Off Campus \$4.00 per line
(freq. rates available)

REMEMBER:
DEADLINE-THURS NOON
All checks should be made
payable to: UC REGENTS
If mailing, send ad copy and
payment to:
THE NEW UNIVERSITY/UCI
3100 Gateway Commons
Irvine, CA 92717
ATTN: CLASSIFIED ADS

Canterbury
Irvine

The Episcopal Chaplaincy at UCI

We welcome and invite you to be a part of our community
at Interfaith!

Bible Study, Tuesday at 8:00 pm followed by Holy Eucharist
Thursday, 12:10 pm, Holy Eucharist followed by a free lunch
Counseling, retreats, fellowship, instruction

The Rev. Susan Klein
Episcopal Chaplain
833-0891

Ten Years Serving the
UCI Community

Kinko's
COPY and STATIONERY

Buy all your school supplies here.
Look at these deals!

- Three ring binders—one inch
\$1.89 (Kinko's reg. price \$3.39; retail \$4.16)
- Filler paper—National brand
\$1.85 (200 sheets)

Hours: M-F 8am-7pm
Sat. 10am-4pm
in The Marketplace
4249 Campus Dr.
Ste. 150
Irvine, CA 92715
854-7557

**THREE RING &
FILLER PAPER SALE!**

O-WEEK '87
CAN YOU ADD TO THIS?
ARE YOU LOOKING FOR A SUMMER JOB?

STUDENT SUPPORT SERVICES
IS CURRENTLY RECRUITING FOR THE
1988 O-WEEK COORDINATOR

O-Week '87

- If you would like to learn administrative, programming, and communication skills,
if you would like to earn good money and have fun at the same time,
if you are available to work during the spring quarter, summer, and O-Week,
if you like to work variable and flexible hours,
if you have good organizational skills, and great creativity,
if you possess great knowledge about UCI,
if you like challenges,
then this job may be for you!!!

If you are interested in being the O-WEEK COORDINATOR for Fall of 1988, you can pick up an
application and job description in 201 and 209 Administration, Cross Cultural Center, University
Center Info Desk and Administration Building's Info Desk, Disabled Student Services, Student
Activities, Middle Earth, Mesa Court, Campus Village, Women's Resource Center, or the Verano
community and housing office.

Once you complete your application, return it to Disabled Student Services, 105 Administration
For further information, contact Harold Lopez, O-Week Staff Coordinator, Ext. 7494

APPLICATION DEADLINE: FEBRUARY 12, 1988

UNUM

ON CAMPUS

• UNUM is recruiting on the West Coast for the
position of Sales Representative. The ideal
candidate has completed a 4-year under-
graduate program and is comfortable working
independently.

• UNUM is an insurance wholesaler of
employee benefits to the insurance brokerage
community

**INTERVIEWING THURS., JAN. 21
9-4:30 COUNSELING CENTER
(Bring Resume)**

For more information please
contact the Career Center or

One Pacific Plaza
Suite 302
7777 Center Ave.
Huntington Beach, CA 92647

John A. Valyo
894-7294

UNIVERSITY CENTER

PHASE 3

RETAIL

University Bookstore

The new bookstore will be over twice the size of the current bookstore, totalling over 30,000 square feet. It will occupy the area immediately adjacent to the east patio, and the existing service road. Included within the bookstore plans are space for a separate convenience store and computer store.

Clone Factory

The Clone Factory will be housed on the lower level of the new University Center. It will be expanded from its present size of 1,200 square feet to 3,000 square feet. The Clone Factory will be designed to offer three separate entrances: Copy Service, Course Material/Lecture Notes, and Typesetting. The design will also incorporate extra space for storage.

Wilderness Warehouse

The Wilderness Warehouse will move from its existing location to a space along the Ring Road between the Cafeteria and the Bookstore and will remain about the same size as the current facility.

Outroads Travel

Outroads will expand from its current size of 241 square feet to 948 square feet and will accommodate up to eight travel consultants. It will occupy space which currently houses the Z-Club.

Vending Area

Adjacent to the games room there will be an interior vending area.

New Retail

Approximately 1,700 square feet of undesignated retail space has been set aside to be improved by tenants. Possible tenants may include a bank, hair salon, dry cleaners, or florist.

RECREATION

Games Room

The existing Side Pocket will be expanded from its current 2,400 square feet to 5,000 square feet. There will be a video and a board game area. Billiard space will increase from the current four tables to eight or ten tables. A glass enclosed ping pong area is also included in the plan.

CONFERENCE ROOMS

The Heritage Room will remain intact. Adjacent to the Heritage Room, toward Bridge Road and Pereira Drive, there will be a new conference room measuring 6,000 square feet, about twice the size of the Heritage Room. This room will have the capacity to be divided into five smaller rooms. Adjacent to this conference room will be four small conference rooms which can combine into two rooms, each accommodating 50 and about the size of the existing Willow/Oak room.

The second element of the Conference Center is a 488-seat auditorium complete with a 16mm projection system. The auditorium will be acoustically treated and capable of hosting a variety of events.

LOUNGES

There are a variety of lounge environments to be included within the building. Overall lounge space will expand from a current size of 4,428 square feet to 9,500 square feet. Lounge spaces include space for quiet study such as the Z-Club, which will double in size. There will be two active lounge spaces in the new building, both located near high-traffic pedestrian areas (Ring Road and Food Court). Other lounges will include a television lounge seating about 100 and music-listening and video-viewing lounge seating for about 120.

FOOD SERVICE

Food Court

Located above the Conference Center, the Food Court will provide 400 indoor seats around four mini restaurants (Asian, Mexican, Pizza, and Deli), a salad/soup bar, and a fast-food hamburger franchise.

Cafe

Located on the Ring Road, across from the Administration building, the Cafe will sell gourmet coffees, croissants, frozen yogurt, and ice cream. It will provide indoor seating for 60.

Pub

Located on the third level above the Food Court, the Pub will provide indoor seating for about 200 and offer a variety of sandwiches. This area is anticipated to accommodate a variety of programs such as comedy, music and dances.

Outdoor Seating

The "Terrace" will provide a landscaped outdoor seating environment for more than 600. The "Terrace" will also have several performance areas incorporated as part of the design.

SERVICE

ATMs

Automated Teller Machines which will be accessible 24 hours will be housed adjacent to the front plaza. There is space for six machines (two per bank).

Student Service Center

The Student Service Center will be located adjacent to the bookstore entrance. This space will provide for utility bill paying, drop off storage (art boards or other bulky items), and possible Ticketron/Ticket Master service.

Post Office Substation

A full service post office and post office boxes (500) will be located near the Student Service Center.

OFFICE AREAS

ASUCI

ASUCI space will expand to occupy the entire second level wing in which they are currently housed. The current space of 2,510 square feet will increase to 3,480 square feet which will provide 16 private offices, a research and information office, computer room, and small conference room. Also, commissioners will have a secured office as well as 21 work stations.

Cross-Cultural Center

The new Cross-Cultural Center will be a 3,390 square foot free standing facility located on the Ring Road between Gateway Commons and Student Services I. Included in the new facility will be a conference room with an adjacent lounge. The conference and lounge can combine to accommodate up to 70 people. There will be 10 private offices, including 4 club offices, an open office area, graphics workroom and a quiet lounge with seating for 25.

Student Activities

The Student Activities Office space will increase from 3,091 square feet to 5,500 square feet, expanding through their existing wing ultimately occupying the Sound Connection and lower level lobby. There will be nine private offices, including three for interns. Club and organization space will expand from the existing nine cubicles to 20. The club workroom space and informal lounge space will be expanded significantly. An alcohol education and leadership development resource center will also be housed in the new space.

University Center Administration

The University Center administrative office will expand from two private offices and four cubicles to nine private offices, including an office for the University Center Board and one for student supervisors. A small conference room is also included in the plan.

While the University Center Phase 3 project is under construction

THE UNIVERSITY BOOKSTORE WILL TEMPORARILY RELOCATE

to

THE UNIVERSITY TOWER, FIRST LEVEL

(across the bridge, in the Marketplace)

The Bookstore will close its doors on
February 12, 1988 at 5 p.m.

and reopen on
February 22, 1988
at the new location

In order to accommodate your needs a small convenience store will remain on campus.

UNIVERSITY BOOKSTORE