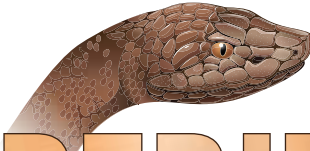


4-0-0 4Cu



COPPERHEAD™

WITH AGXPLORE'S PROPRIETARY BLEND

GUARANTEED ANALYSIS:

Nitrogen (N).....4.0%
Copper (Cu).....4.0%
Derived from: 2.0% Cu EDTA and 2.0% Cu ligno sulfate

WARNING
KEEP OUT OF REACH
OF CHILDREN

GENERAL INFORMATION:

Maximize your grain quality and yield with **Copperhead**

DIRECTIONS FOR USE:

16oz - 1qt of **Copperhead** per acre or 473ml - 946ml per acre (.47 L - .95 L per hectare)

STORAGE AND DISPOSAL

Store in cool, dry place. Store in original container. Keep container tightly closed. Do not reuse empty container. Triple rinse, then offer for recycling or for disposal in a sanitary landfill, or by other means in accordance with local, state and federal regulations.

PRECAUTIONARY STATEMENTS

Keep container tightly closed. Avoid contact with eyes, skin and breathing vapors or spray mist. Wear protective gloves. Do not eat, drink or smoke when using this product. Wash hands thoroughly after handling. Use adequate ventilation when handling. Keep away from open flame. In case of fire: Dry chemical fire extinguisher to extinguish and call CHEMTREC (800) 424-9300. **First Aid:** If exposed call CHEMTREC or refer to SDS First Aid section. If on skin: Take off contaminated clothes immediately. Rinse skin with water

NOTICE

Manufacturer warrants that Copperhead conforms to its chemical description and will perform as stated on the label when used according to directions and under normal conditions. Neither this warranty or any other warranty of merchantability, expressed or implied, extends to the use of this product contrary to label directions. Buyer assumes all risk if Copperhead used in any manner or under any condition other than those specifically set forth on the label.

NET CONTENT:

____ 2.5 gal.
____ 2x2.5 gal.
____ bulk ____ gallons

NET WEIGHT: 10.5 lb/gal @ 68°F (1.26 Kg/L @20°C)



Manufactured for:
PO Box 638 • 7035 State Hwy D • Parma, MO 63870
573.357.4506 • www.agxplore.com

©AgXplore 2018