



CustomFit can't manage all of Aislinn's stitch patterns, but you can still make a custom Aislinn with a few adjustments!

AISLINN



AISLINN BY AMY HERZOG

WHAT'S A MASH-UP?

CustomFit can't do everything! Some of my designs, like Aislinn, can't be built directly into CustomFit.

Mash-up worksheets help you use CustomFit to get as close as possible to a custom version of a sweater that's not built directly into the site. They work like this:

1. Make sure you have a CustomFit measurement set, and swatch as described here to get your custom gauge.
2. Generate a CustomFit pattern via the "Build Your Own" pattern wizard, using the choices listed; this costs \$9.99.
3. While you follow your CustomFit pattern, **also** follow any special instructions for the piece you're knitting, **at the same time**. This means you're following 2 files as you knit!

SHOWN IN

The Plucky Knitter Plucky
Sweater in Narragansett
Grey

SWATCHING

please swatch in St st
use a DK-light worsted yarn

NOTIONS

Stitch markers, stitch
holder, darning needle,
cable needle

OVERVIEW

Aislinn is a dressed-up version of a crew-neck cardigan, with buttonbands worked as part of the fronts, stitch patterns added to the CO edges and fronts, and picked-up ties worked after seaming. These adjustments make Aislinn one of the more complicated sweaters to reproduce using CustomFit, and I'd strongly recommend working a built-in CustomFit pattern first.

BUILD YOUR OWN CHOICES

Once you've swatched and entered your measurements into CustomFit, create your starting pattern by going to the "Build Your Own Pattern" wizard at

<https://customfit.makewearlove.com/design/custom/>

Please use these choices:

- Silhouette: Hourglass
- Construction: Sleeved Cardigan

Button band:

- allowance: -1.5" (-4 cm)
- # of buttons: 0
- edge height: .5" (1.5 cm)
- edge stitch: other

Neckline:

- shape: crew
- width: average
- depth: 3" (7.5 cm) below shoulders
- edge height: .5" (1.5 cm)
- edge stitch: 1x1 ribbing

Sleeves:

- length: 3/4
- shape: tapered
- edge height: 3" (7.5 cm)
- edge stitch: 1x1 ribbing

Hem:

- length: long
- edge height: 4" (10 cm)
- edge stitch: 1x1 ribbing

BACK SPECIAL INSTRUCTIONS

CO the number of sts specified in your CustomFit pattern. Work even in 1x1 ribbing for 2.5" (6.5 cm), then knit one WS row to create a purl ridge. Work 4 rows even in Stockinette stitch if you're using a yarn up to light worsted, and 2 rows even in Stockinette stitch if you're using a heavier yarn.

Switch to Eiffel Tower Eyelets and work that chart once through, *working your waist shaping at the same time when instructed to do so*.

Once Eiffel Tower Eyelet Chart is complete, switch back to Stockinette stitch and finish as per your CustomFit pattern.

CARDIGAN FRONTS OVERVIEW

You'll be working a few changes to your CustomFit pattern simultaneously - *so here's a road map*:

- You'll be working the button band stitches inline with the cardigan fronts, slipping the first stitch of the neck edge row.
- You'll establish a center lace panel after the ribbing is complete, and working Harebell Lace / Pigtail charts within that panel from the end of the ribbing to the top of the garment.
- Outside the panel, you'll work Eiffel Tower Eyelets and then Stockinette stitch to the shoulder.
- You may need to relocate waist shaping to be 1 stitch outside of the lace panel.

If something doesn't make sense, check out the pattern photos for guidance.

CARDIGAN FRONTS SPECIAL INSTRUCTIONS

CO the number of stitches specified in your CustomFit pattern.

Work even in 1x1 ribbing, slipping the first stitch of every WS row for the Left Front, and the first stitch of every RS row for the Right Front, until piece measures 2.5" (6.5 cm), ending with a RS row. Mark 7 neck-edge stitches - these are your

button band and will be worked in rib to end.

Next row (WS): Knit non-marked stitches to create a purl ridge.

Place a second marker further inward from the neck edge such that:

- There are a multiple of 7 stitches plus 9 between it and the first marker (e.g. the marker is around the 16, 23, 30, or 37 stitches just inside your ribbing)
- The stitches marked are around the number of stitches in your neckline.

You've now marked both your button band stitches, to be worked in rib to the end of the piece, and your Harebell Lace stitches.

Place a third marker 7 stitches further inward from the rest; this is your Pigtail panel.

Right Front Next row (RS): Work in 1x1 ribbing, slipping the first stitch, to first marker, sm, work Row 1 of Harebell Lace, sm, work Row 1 of Pigtail, sm, knit to end.

Left Front Next row (RS): Work in St st to your first marker, sm, work Row 1 of Pigtail, sm, work Row 1 of Harebell Lace until next marker, sm, work in 1x1 ribbing to end.

Work 3 (or 1, to match back) additional rows as established.

Right Front Next row (RS): Work in 1x1 ribbing, slipping the first stitch, to first marker, sm, work Harebell Lace as established, sm, work Pigtail as established, sm, work Row 1 of Eiffel Tower Eyelets to end.

Left Front Next row (RS): Work Row 1 of Eiffel Tower Eyelets to your first marker, sm, work Pigtail as established, sm, work Harebell Lace as established until next marker, sm, work in 1x1 ribbing to end.

Continue as established through end of Eiffel Tower Eyelet chart, and then switch stitches on the armhole side of Pigtail/Harebell/Rib panels to Stockinette.

At the same time, work waist shaping 2 stitches outside center panels as instructed in your CustomFit pattern.

Work armhole, neck, and shoulder shaping as described in your CustomFit pattern.

SLEEVES SPECIAL INSTRUCTIONS

Cast on the number of stitches specified in your CustomFit pattern.

Work even in 1x1 ribbing until sleeve measures 3" (7.5 cm), ending with a RS row.

Knit one WS row to create a purl ridge. Work 2 rows even in St st.

Work all stitches in Eiffel Tower Eyelet chart all the way through, then switch entire sleeve to Stockinette stitch. Complete all shaping as described in your CustomFit pattern.

FINISHING INSTRUCTIONS

Work finishing as specified in your CustomFit pattern, except omit button band instructions.

Ties:

Left Front Tie: With RS facing and beginning at the top of the straight section of the waist, just inside the Pigtail sts, pick up and knit 9 sts down the front of the sweater toward the bottom of the straight section of the waist.

Slipping the first stitch of every row, work these sts in 1x1 ribbing until piece measures approximately 8" (20.5 cm) or desired length. BO all sts.

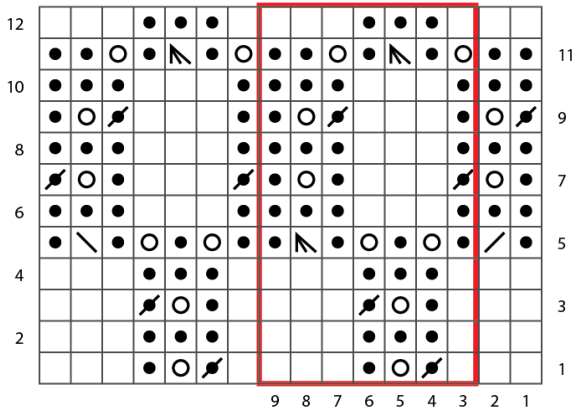
Right Front Tie: With RS facing and beginning at the bottom of the straight section of the waist, just inside the Pigtail sts, pick up and knit 9 sts up the front of the sweater toward the top of the straight section of the waist.

Slipping the first stitch of every row, work these sts in 1x1 ribbing until piece measures approximately 8" (20.5 cm) or desired length. BO all sts.

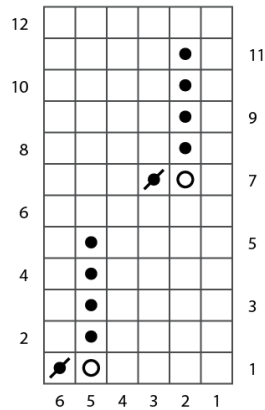
Sew one large snap onto plackets at waist, and weave in final ends.

CHARTS

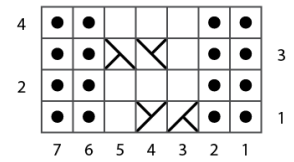
Harebell Lace









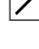
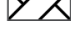
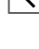
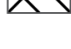
Eiffel Tower Eyelets



Pigtail



Legend

 k on RS, p on WS	 p2tog
 p on RS, k on WS	 slip 1 as if to knit, k2tog, pss0
 yo	 pattern repeat
 k2tog	 SI 1 st to CN and hold to back, k1, k1 from CN
 ssk	 SI 1 st to CN and hold to front, k1, k1 from CN



ABOUT AMY

Amy Herzog loves helping knitters create garments they love to wear.

She is the author of *Knit to Flatter*, *Knit Wear Love*, and *You Can Knit That* (STC Craft), and is the creator of the CustomFit custom sweater pattern generator and the Knitter's Toolbox app of handy knitting calculators.

She teaches across the country and on Craftsy.com, and has appeared on American Public Television's "Knit and Crochet Now". Her designs have been published in Rowan, Interweave Knits, Knitscene, Twist Collective, and more.

Learn more at www.amyherzogdesigns.com.