

CustomFit can't
make patterns with
in-line button bands,
but you can still make a
custom Nantasket
Vest with a few
adjustments!

NANTASKET VEST



NANTASKET BY AMY HERZOG

WHAT'S A MASH-UP?

CustomFit can't do everything! Some of my designs, like Nantasket, can't be built directly into CustomFit.

Mash-up worksheets help you use CustomFit to get as close as possible to a custom version of a sweater that's not built directly into the site. They work like this:

1. Make sure you have a CustomFit measurement set, and swatch as described here to get your custom gauge.
2. Generate a CustomFit pattern via the "Build Your Own" pattern wizard, using the choices listed; this costs \$9.99.
3. While you follow your CustomFit pattern, **also** follow any special instructions for the piece you're knitting, **at the same time**. This means you're following 2 files as you knit!

SHOWN IN

Classic Elite Firefly
in #7706

SWATCHING

please swatch in St st
using a yarn containing
a drapey fiber

NOTIONS

Stitch markers, stitch
holder, darning needle

OVERVIEW

Nantasket is a simple Stockinette cardigan vest, with lace trim and a button band that is worked in-line with the fronts - which is not currently an option in CustomFit.

To reproduce Nantasket using CustomFit, you'll add the buttonband stitches to the front pieces, and work them in lace (with the rest of your stitches in Stockinette) to the shoulder, and then continue on the lace stitches until trim meets at center back neck. Trim is sewn to back neck before the final edge is added to the cardigan opening.

BUILD YOUR OWN CHOICES

Once you've swatched and entered your measurements into CustomFit, create your starting pattern by going to the "Build Your Own Pattern" wizard at

<https://customfit.makewearlove.com/design/custom/>

Please use these choices:

- Silhouette: Hourglass
- Construction: Cardigan Vest

Button band:

- allowance: 4" (10 cm)
- # of buttons: 0
- edge height: .25" (.6 cm)
- edge stitch: garter stitch

Neckline:

- shape: V
- width: average
- depth: 0" (0 cm) above armhole

Armholes:

- edge height: .25" (.6 cm)
- edge stitch: 1-cord

Hem:

- length: long
- edge height: 2.25" (6 cm)
- edge stitch: open mesh lace

BACK

Work as directed in your CustomFit pattern.

RIGHT FRONT SPECIAL INSTRUCTIONS

CO the number of stitches specified in your CustomFit pattern, **plus stitches to create the opening lace edge - the number will depend on your gauge**. Calculate the number of lace edge stitches by multiplying your per-inch stitch gauge by 2, and then rounding to the nearest multiple of 3 stitches plus 1.

(For example, if your stitch gauge is 6 stitches to the inch, you'll cast on your CustomFit number plus an additional 13 stitches ($6 \times 2 = 12$, the nearest multiple of 3 + 1 stitches is 13).

Mark that number of stitches, closest to the neck edge.

First row (RS): K1, work in Open Mesh Lace to marker, sm, knit to end.

Second row (WS): Purl to marker, sm, work in Open Mesh Lace to last st, p 1.

Continue working the Stockinette stitches exactly as described in your CustomFit pattern, and the lace stitches straight in lace, until you reach the shoulder bind-offs.

This will mean that neck shaping occurs inside the lace, within the Stockinette portion.

Work the shoulder bind-offs as described; you now have only your "added" lace stitches on the needles.

Continue straight for 1" (2.5 cm). Then continue, decreasing 1 stitch at the beginning of every RS row until half of your sts have been removed. (Charts are provided for inspiration and help; your stitch count may be different.) Continue on remaining stitches until your trim (when lightly stretched) reaches the center back neck. BO all sts.

LEFT FRONT SPECIAL INSTRUCTIONS

CO the number of stitches specified in your CustomFit pattern, **plus stitches to create the opening lace edge - the number will depend on your gauge**. Calculate the number of lace edge stitches by multiplying your per-inch stitch gauge by 2, and then rounding to the nearest multiple of 3 stitches plus 1.

(For example, if your stitch gauge is 6 stitches to the inch, you'll cast on your CustomFit number plus an additional 13 stitches ($6 \times 2 = 12$, the nearest multiple of 3 +1 stitches is 13).

Mark that number of stitches, closest to the neck edge.

First row (RS): Knit to marker, sm, work in Open Mesh Lace to last stitch, k 1.

Second row (WS): Purl 1, work in Open Mesh Lace to marker, sm, purl to end.

Continue working the Stockinette stitches exactly as described in your CustomFit pattern, and the lace stitches straight in lace, until you reach the shoulder bind-offs.

This will mean that neck shaping occurs inside the lace, within the Stockinette portion.

Work the shoulder bind-offs as described; you now have only your "added" lace stitches on the needles.

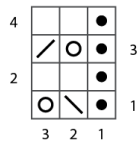
Continue straight for 1" (2.5 cm). Then continue, decreasing 1 stitch at the beginning of every RS row until half of your sts have been removed. (Charts are provided for inspiration and help; your stitch count may be different.) Continue on remaining stitches until your trim (when lightly stretched) reaches the center back neck. BO all sts.

FINISHING SPECIAL INSTRUCTIONS

Before beginning cardigan opening trim, sew the trim pieces that extend past the shoulder bind-offs to the center back neck using mattress stitch.

CHARTS

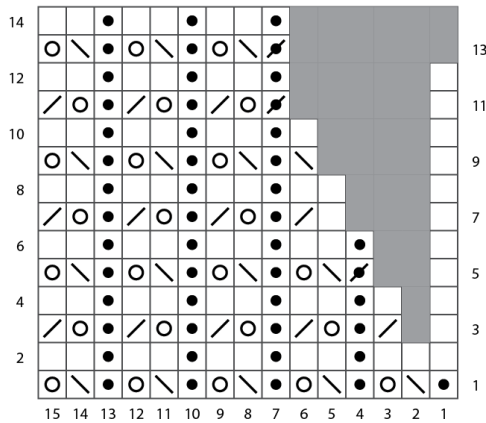
Open Mesh Lace



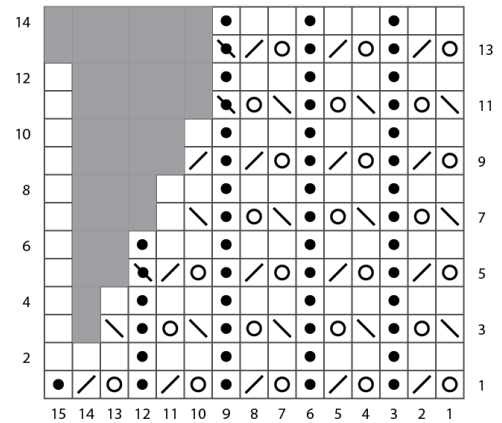
Legend

-  k on RS, p on WS
-  p on RS, k on WS
-  yo
-  k2tog
-  ssk
-  no stitch
-  p2tog
-  k3tog

Left Neckline Chart



Right Neckline Chart



ABOUT AMY

Amy Herzog loves helping knitters create garments they love to wear.

She is the author of *Knit to Flatter*, *Knit Wear Love*, and *You Can Knit That* (STC Craft), and is the creator of the CustomFit custom sweater pattern generator and the Knitter's Toolbox app of handy knitting calculators.

She teaches across the country and on *Craftsy.com*, and has appeared on American Public Television's "Knit and Crochet Now". Her designs have been published in Rowan, Interweave Knits, Knitscene, Twist Collective, and more.

Learn more at www.amyherzogdesigns.com.