

## ASG33 Snow Guard Installation Instructions (All Clamp Configurations)

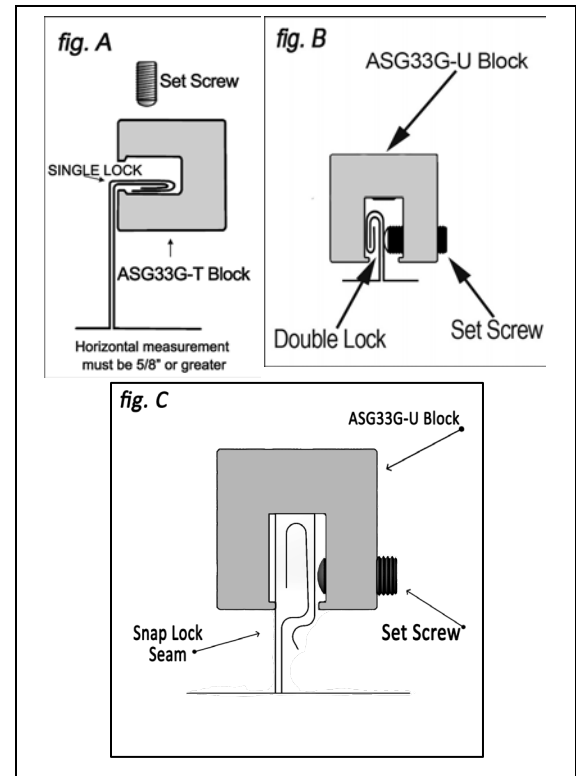
### ROOF TYPES

- New / Existing Metal Standing Seam:
  - Horizontal Standing Seam / Single Lock panels (fig. A)
  - Vertical Standing Seam / Double Lock panels (fig. B)
  - Snap Lock Profiles (fig. C)
  - Applied Batten Cap

### INSTALLATION

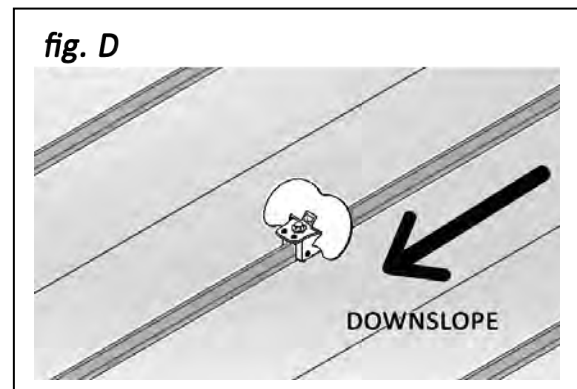
**Note:** Snow guards are shipped unassembled; the clamp is to be attached to the seam before the bracket is mounted.

1. When attaching blocks (clamps) to machine folded seams, (regardless of panel profile and geometry), the ASG block is designed to engage seams by pinching the seams with 2 stainless steel set screws. For horizontal seam applications (inverted "L"), set screws must be accessible from the top of the block for tightening (fig. A). On snap together type seams, orient the block so that the set screws are opposite the open, or overlap side of the seam. On some types of panel seams, the aspect of block orientation is not critical.



**Note:** Some horizontal seams may require additional hand-crimping at the clamp location.

2. Both set screws should be installed into same side of clamp; use only two set screws per clamp.
3. Position the blocks (clamps) appropriately on the panel seam. Using a 3/16" hex bit for a 1/4" drive screw gun, tighten and re-tighten set screws as the seam material compresses. On low seam profiles, a 4"-bit extension on the screw gun may help to access the set screw. Tighten set screws to a torque value of 140-180 in-lbs.
4. After the clamp has been installed on the seam, attach the flag using the supplied bolt and washer.
5. Torque the bolt to 115 in-lb.





## **ASG33 Snow Guard Installation Instructions (All Clamp Configurations)**

### **STANDARD SNOW GUARD LAYOUT OPTIONS**

- < 75 PSF (GSL)
- < 16/12 Roof Pitch
- Install one row for every 5' of rafter length (Minimum of 2 rows)
- Clamp every other seam starting 12" from the eave edge
- Subsequent rows spaced one panel width upslope
- Maximum panel width 21" on center
- Any snow load exceeding 75 PSF, please contact us at 888-766-4273.

Document Version 03.14.2023  
07 72 53 Snow Guards