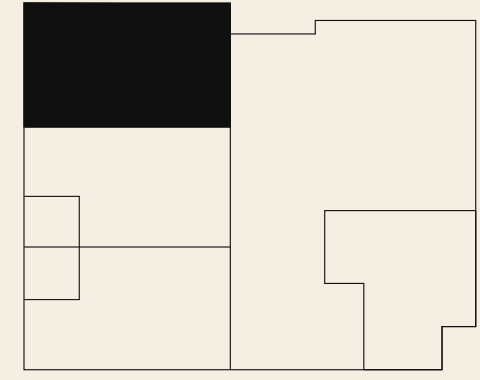
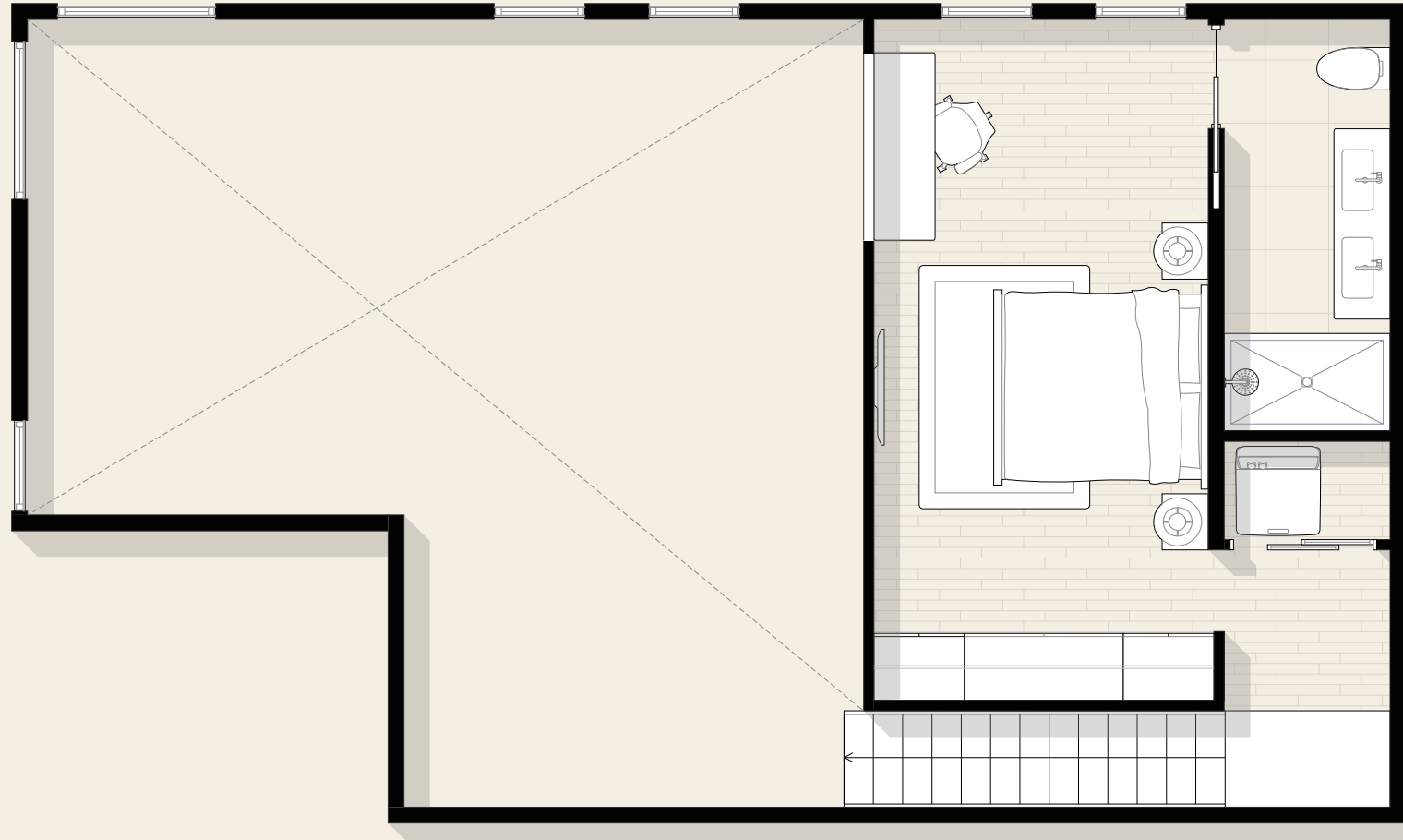


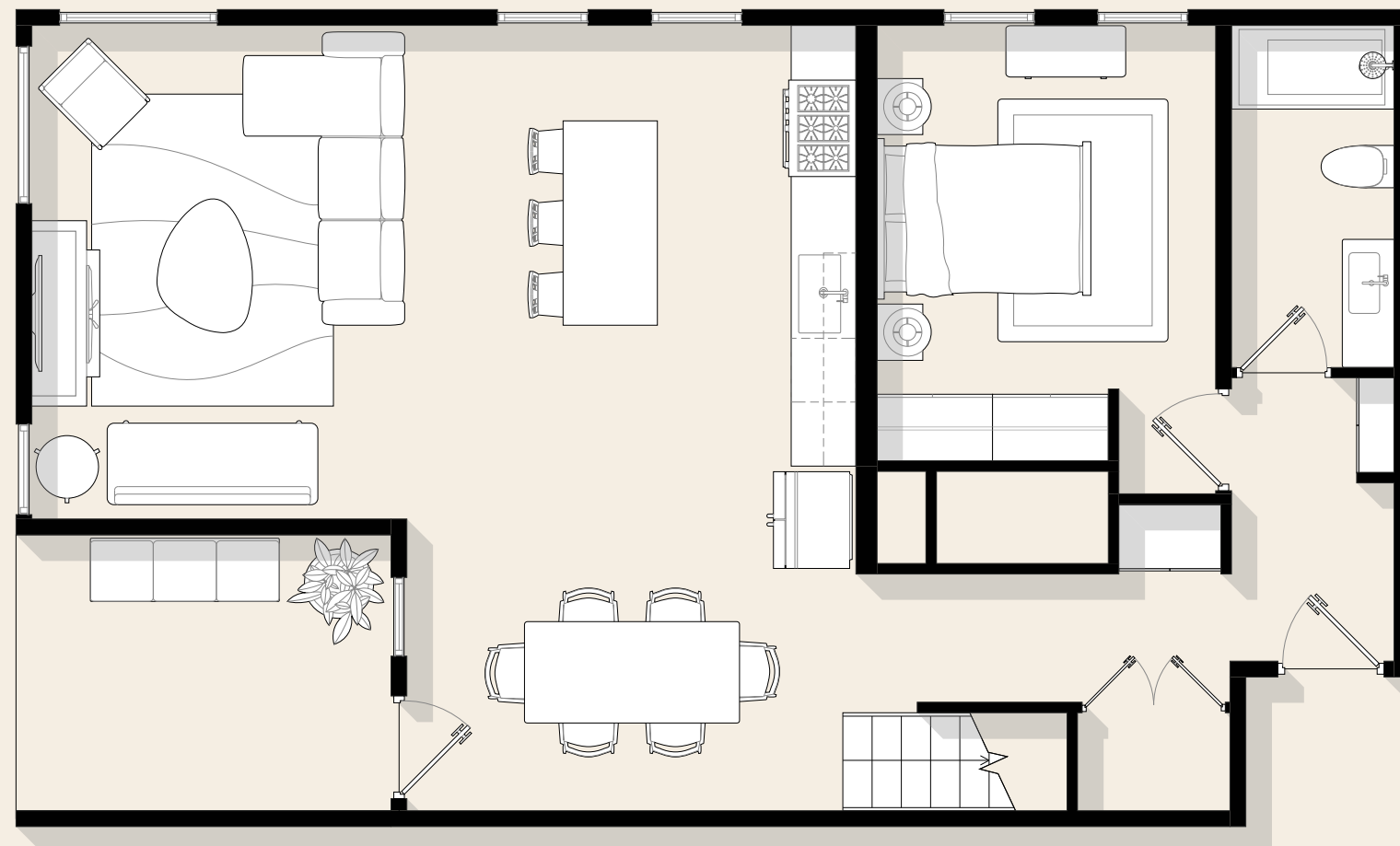
# 101



*2 Bedroom*  
*2 Bathroom*  
*1,355 Square Feet*  
*North and West Exposures*  
*Two-Level Walk-Up*



MEZZANINE FLOOR



MAIN FLOOR

## Notes

---

---

---

---

---

## WASHBURN HOUSE

Distinctive two-story townhomes that maximize space and light. Enter at street level into an open main floor where kitchen, dining, and living areas flow together naturally. Above, a private mezzanine level houses the primary suite, creating clear separation between public and private spaces. The vertical layout adds architectural interest while maximizing livability. Walk-up access means you're always just steps from your front door and the neighborhood beyond.

RESERVE YOUR HOME TODAY  
WASHBURNHOUSEMPLS.COM