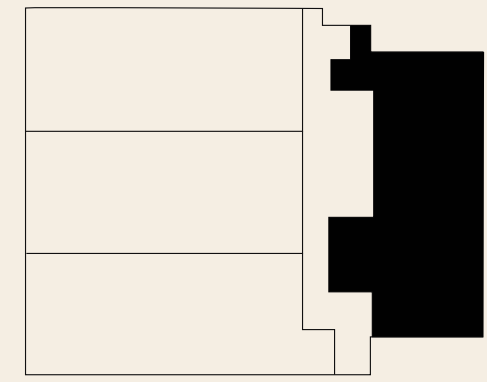


204



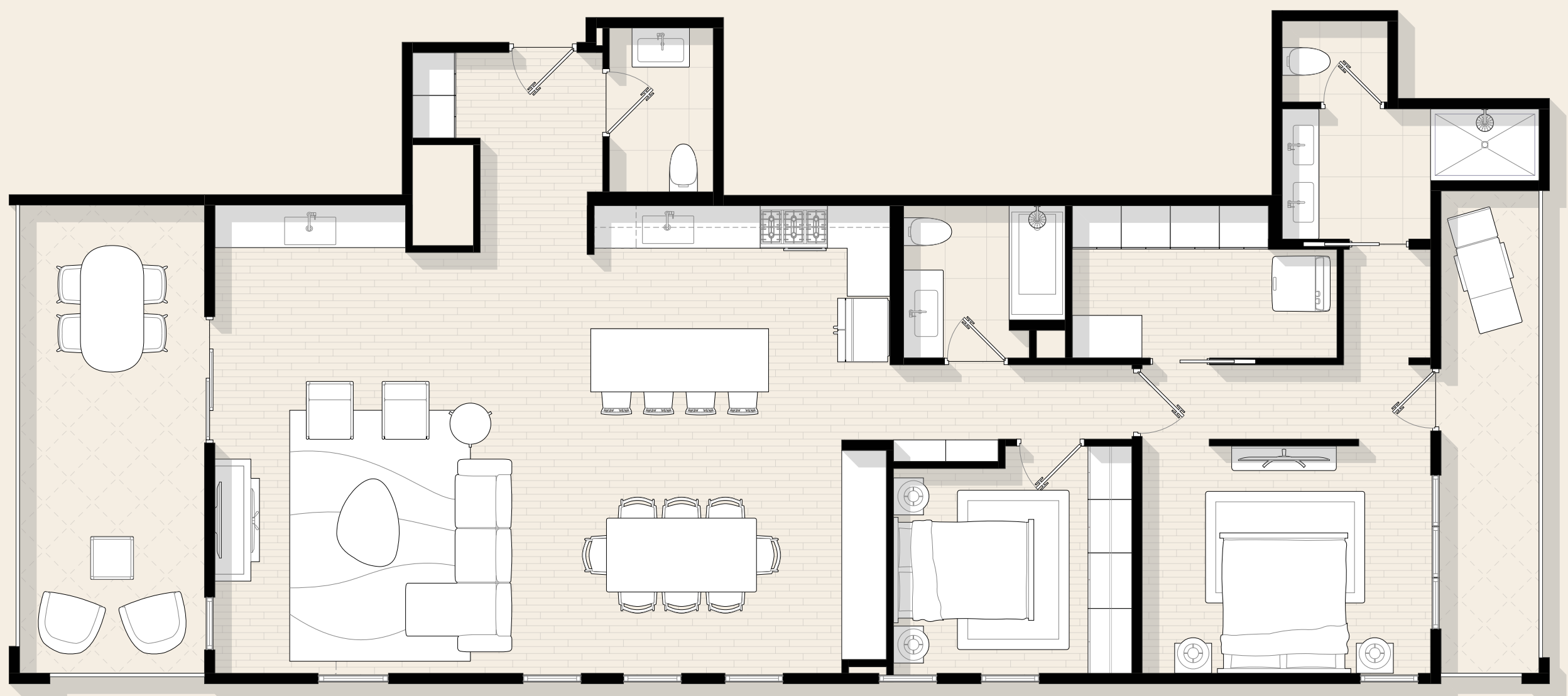
2 Bedroom

3 Bathroom

1,580 Square Feet

North, East and South Exposures

One-Level



Notes

WASHBURN HOUSE

Designed for effortless entertaining, this expansive open floorplan flows seamlessly between indoors and out. A wet bar and powder room anchor the social spaces, while a generous terrace extends the living room into the open air. The primary suite offers a true retreat, complete with its own private terrace. The second bedroom's generous proportions make it equally suited as a guest room, home office, or den. Thoughtfully conceived, the layout balances openness for gathering with intimacy for everyday living.

RESERVE YOUR HOME TODAY
WASHBURNHOUSEMPLS.COM