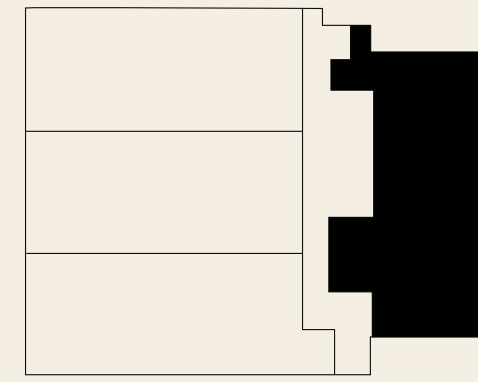


# 304



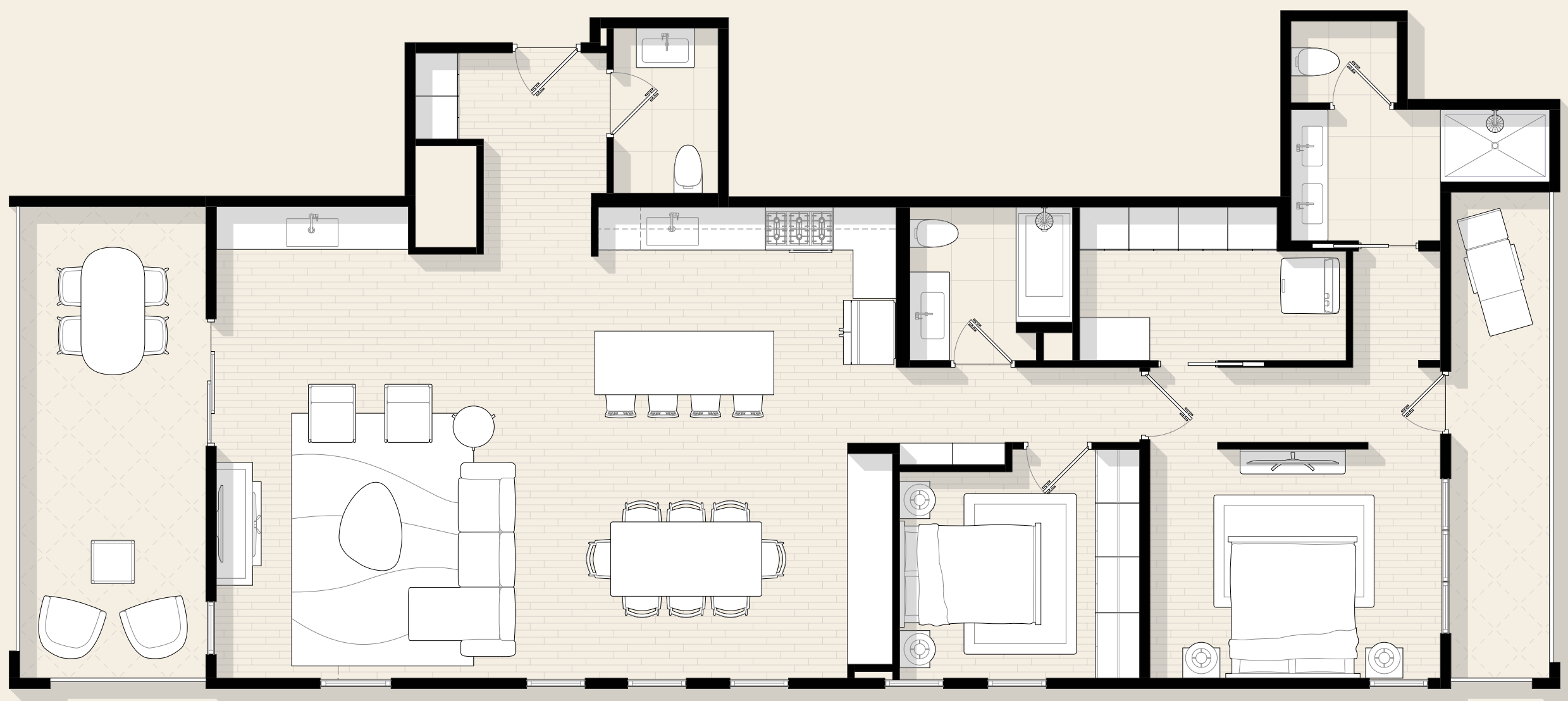
*2 Bedroom*

*3 Bathroom*

*1,580 Square Feet*

*North, East and South Exposures*

*One-Level*



## Notes

---

---

---

---

---

## WASHBURN HOUSE

Designed for effortless entertaining, this expansive open floorplan flows seamlessly between indoors and out. A wet bar and powder room anchor the social spaces, while a generous terrace extends the living room into the open air. The primary suite offers a true retreat, complete with its own private terrace. The second bedroom's generous proportions make it equally suited as a guest room, home office, or den. Thoughtfully conceived, the layout balances openness for gathering with intimacy for everyday living.

RESERVE YOUR HOME TODAY  
WASHBURNHOUSEMPLS.COM