

manything...^{PRO}

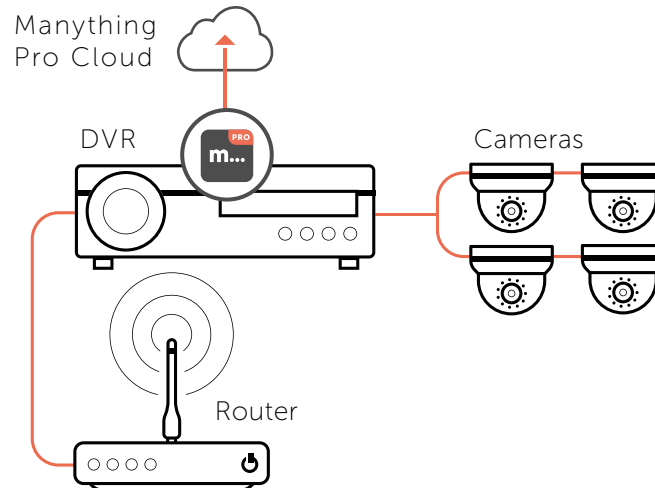
Installation Guide

Cameras recording to cloud + local DVR



V1.1 - Dec 2018

1. How it works



2. Pre-installation

2.1 Installation device

- All you'll need to connect your cameras to the Manything Pro cloud is a smart phone or tablet running:
 - iOS 10 or above if you're using an Apple device
 - Android 4.2 or above if you're using an Android device

2.2 Compatible DVRs

- For the latest list of Hikvision DVRs which are compatible with Manything Pro see [here](#)
- The Manything Pro software runs on the DVR, not the cameras. Therefore, the make and model of cameras shouldn't matter as long as the DVR is compatible.

2.3 Subscriber account creation

- You'll need to create an account for your subscriber before you set up their cameras. To do this log into the Manything Pro partner portal [here](#)
- Once you have logged in, go to 'Subscribers' and press 'Add new'
- You'll be asked to create their username/password and select their cloud recording plan



Tip – Run installation before going on site

You might find it more convenient to install the software onto the DVR before going on site. Just follow the steps in section 3 then disconnect the DVR and cameras once you have finished, then when you get to the customer's location all you'll need to do is connect the DVR and cameras to network and *then* power.

3. Installation

3.1 Network

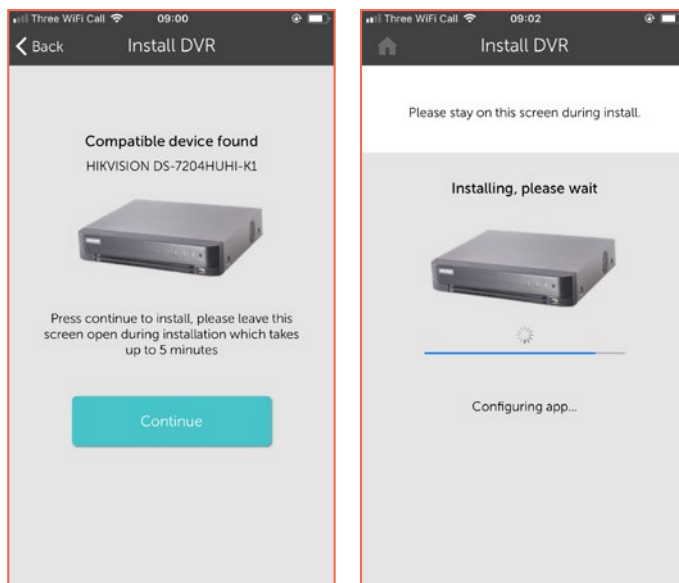
- Make sure that the smart phone or tablet you are using for the installation is on the same network as the DVR. Check that you have the latest version of the Manything Pro app and log in with the credentials you created for your subscriber.

3.2 DVR set up

- Make sure all of the cameras are connected to the DVR, and the DVR is connected to the network. The cameras are discovered by the app during the installation process so if you add a camera to the DVR afterwards, you'll need to re-run the installation.

3.3 Discovering DVR and installing software

- Tap 'Install DVR' on the main menu, and then tap 'Continue' to begin the installation process.
- Enter the DVR IP address, port number (if not port 80), username and password.
Note: It doesn't matter if the IP address changes after the installation is complete, the app just needs to know it for the time of the installation.
- The app will then discover the DVR on the local network, tap 'Continue' to start the installation.



4. Post-installation

- Once the installation is complete, tap 'View cameras'. For each camera:
 - Check that the live feed is working (allow time for it to connect)
 - Check that motion activated events are being recorded

