

# manything...<sup>PRO</sup>

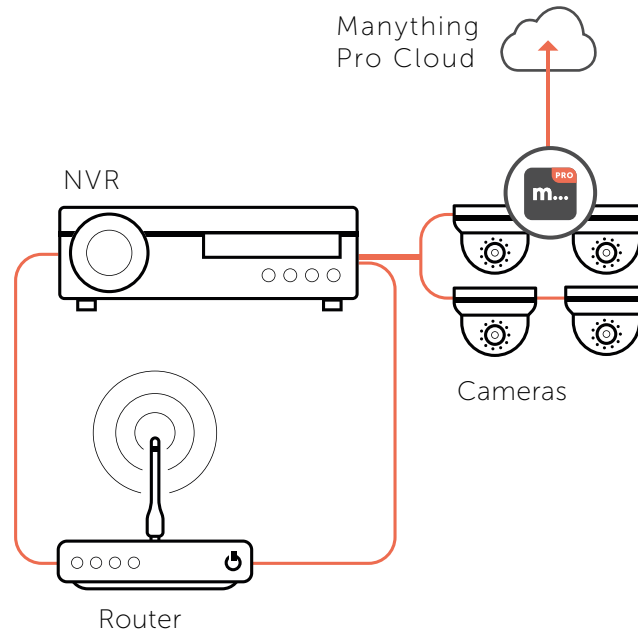
## Installation Guide

IP cameras recording to cloud + local NVR



V1.1 - Dec 2018

## 1. How it works



## 2. Pre-installation

### 2.1 Installation device

- All you'll need to connect your cameras to the Manything Pro cloud is a smart phone or tablet running:
  - iOS 10 or above if you're using an Apple device
  - Android 4.2 or above if you're using an Android device

### 2.2 Compatible cameras

- For the latest list of Hikvision IP cameras which are compatible with Manything Pro see [here](#). Note that OEM versions of these models are not compatible.
- The Manything Pro software runs on the IP cameras, not the NVR. Therefore, the make and model of NVR shouldn't matter as long as the IP cameras are compatible.

### 2.3 Subscriber account creation

- You'll need to create an account for your subscriber before you set up their cameras. To do this log into the Manything Pro partner portal [here](#)
- Once you have logged in, go to 'Subscribers' and press 'Add new'
- You'll be asked to create their username/password and select their cloud recording plan



**Tip 1 – Run installation before going on site**

You might find it more convenient to set up the cameras on your customers account before going on site. Just follow the steps in section 3 then disconnect the cameras once you have finished, then when you get to the customer’s location all you’ll need to do is connect the cameras to network and *then* power.



**Tip 2 – Use an SD card for network outage redundancy**

If a camera has an SD card slot we’d recommend inserting one. You don’t need to do any configuration, our software handles it all for you. If the network goes down we’ll automatically save the video events to the SD card, then when the network is restored we’ll send the video straight up to the Manything Pro cloud. On average you’d need 5GB to save 7 days video.

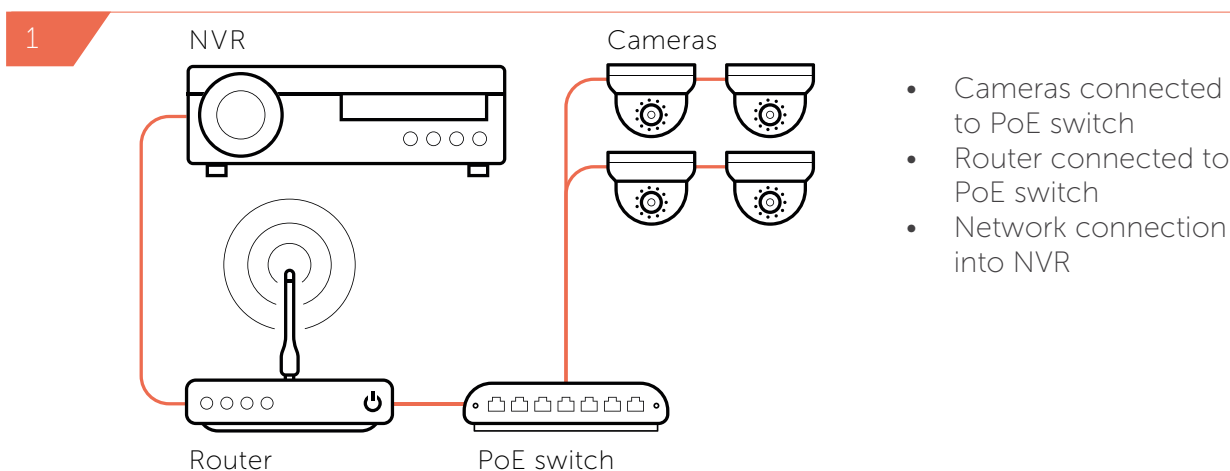
### 3. Installation

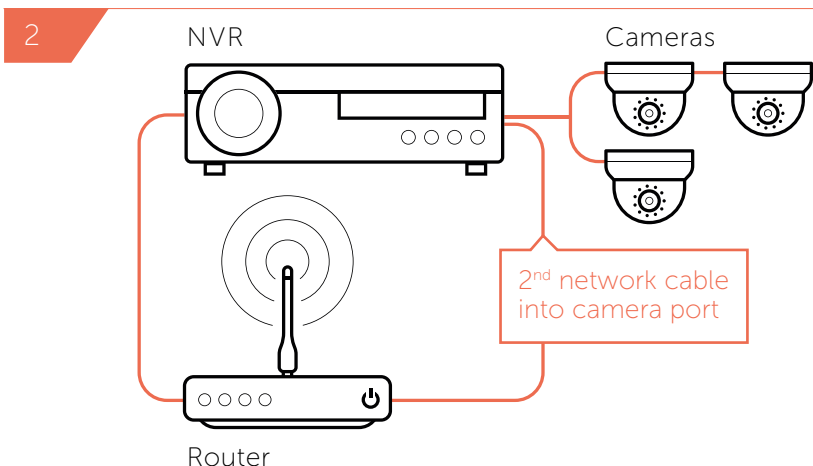
#### 3.1 Network

- Make sure that the smart phone or tablet you are using for the installation is on the same network as the cameras. Check that you have the latest version of the Manything Pro app and log in with the credentials you created for your subscriber.

#### 3.2 NVR set up

- Make sure that the cameras are visible to the local network so that our app can discover them. This can be done in 1 of 2 ways:





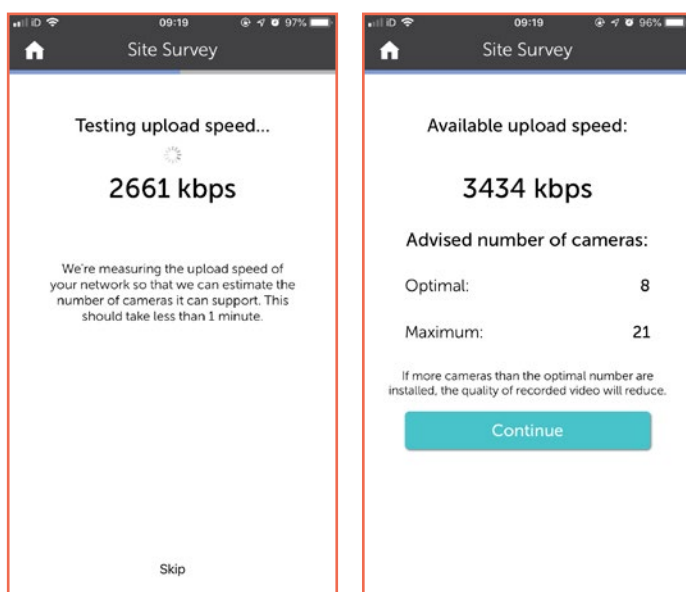
- Cameras connected to NVR
- Network connection into NVR
- 2<sup>nd</sup> network cable into one of the NVR camera ports



If you are installing Manything Pro onto cameras which are already set up on an NVR and are in 'Plug and Play' mode you'll need to make some further changes to ensure the Manything Pro app can discover them, see Appendix 1 for full instructions.

### 3.3 Bandwidth test

- Tap 'Install IP cameras' on the main menu to begin the installation process. The app will run a network speed test each time you begin an installation on a new network, this will tell you how many cameras the network can support.



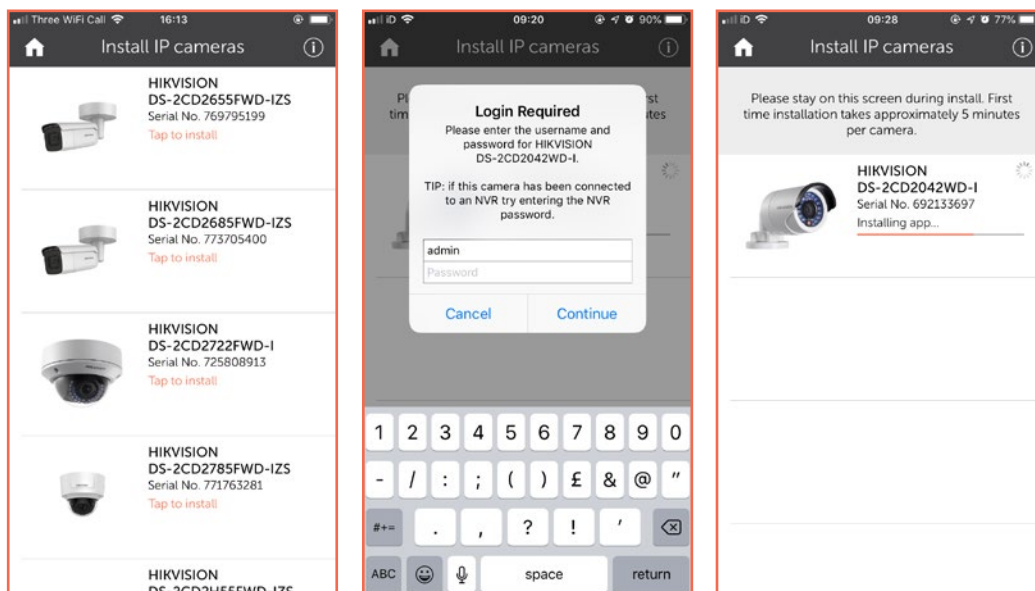
**Optimal** = Recommended number of cameras to run comfortably at default recording specs

**Maximum** = Maximum number of cameras the network could support, at lower recording specs (our software will dynamically lower the video quality if needed to support a larger number of cameras or in poor network conditions)

**Note:** If you install more cameras than the advised maximum, the cameras could discard video if there is not enough bandwidth to send it up to the cloud

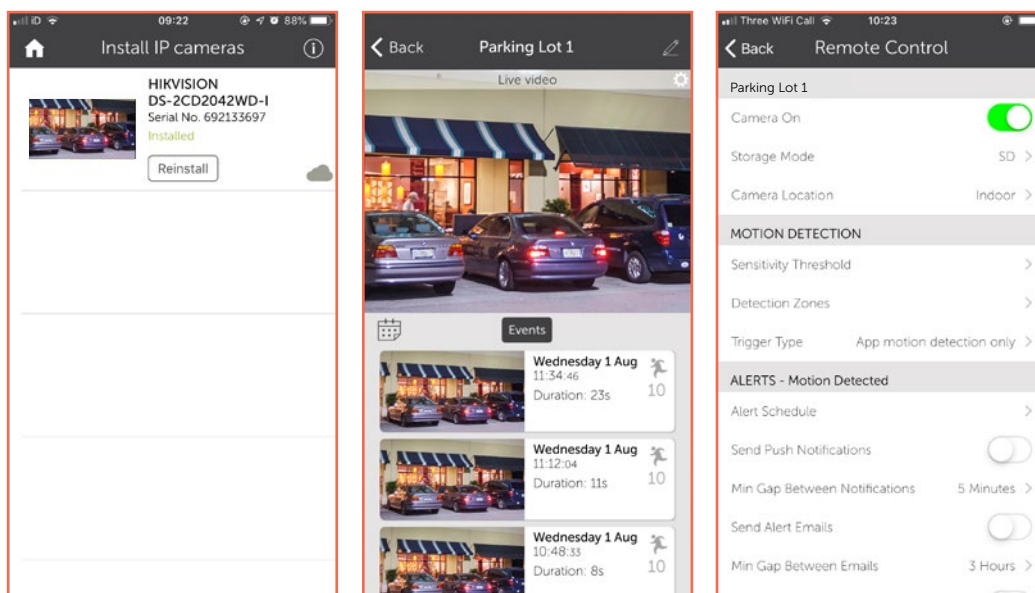
### 3.4 Discovering cameras and installing software

- Once the bandwidth test is complete, tap 'Continue'. The app will then scan the network for compatible cameras and display its findings. Tap the cameras you want to set up with Manything Pro to start the installation, you can do multiple at once.
- You'll be prompted for the camera admin passwords (or asked to set new ones if the cameras are brand new).
- First time installation takes 3-4 minutes, don't leave this screen or quit the Manything Pro app as this will stop the installation process.



## 4. Post-installation

- Once the installation is complete, tap the camera
  - Check that the live feed is working (allow time for it to connect)
  - Check that motion activated events are being recorded
  - Tap the settings cog to check that the 'Storage Mode' is SD – this means that the camera substream will be used for the live stream and cloud recordings (limited to standard definition) and the camera mainstream will be used for local recording to the NVR



## 5. Appendix

### 5.1 Re-configuring cameras which are in 'Plug and Play' mode

Current configuration: You have a working NVR with cameras attached in 'Plug-and-Play' mode. The cameras are configured so they can only talk to the NVR.

Anything Pro requirements: Every camera must be able to talk directly to the Internet, through the router. The cameras will be safe from attack from the Internet because no port forwarding is required and UPnP and NAT will be disabled on the cameras.

1. Log on to the router and find the router's own IP address, its subnet mask and its DHCP range.
  - Router IP address: \_\_\_\_\_
  - Subnet mask: \_\_\_\_\_
  - DHCP range: \_\_\_\_\_
2. Log on to the NVR, and do the following for each camera port:
  - Set the camera port IP address method to 'Manual'.
  - Assign a 'manual' IP address. The camera IP addresses need to be within the same subnet as the router, but they must be outside the router's DHCP range to avoid clashes with other devices.
    - Example: Router address: 192.168.2.254
    - Router subnet mask: 255.255.255.0
    - Router DHCP Range: 192.168.2.2 - 192.168.2.200
    - Suggested IP addresses for 8 camera ports:  
192.168.2.201 - 192.168.2.208
3. Add a second network cable between the NVR and the router - this needs to go from one of the NVR's camera ports to the router. Leave the original cable between the NVR LAN port and the router in place.
  - Tip: If you don't have a spare camera port on the NVR you can connect a PoE switch to one camera port and then attach 2 cameras to the PoE switch.
4. Make the below changes using either Hikvision's SADP tool or each camera's web interface:
  - a. Configure each camera to use one of the IP addresses you have allocated to the NVR camera ports.
    - Note: It doesn't matter which camera you plug into which port, as long as the camera ports and the cameras have the same set of IP addresses amongst them.
  - b. Set both the Default Gateway and primary DNS to be the router's IP address.
5. The NVR should now be able to see each camera again.
  - Tip: If there is an IP conflict, check that all camera ports have the right addresses allocated to them and that all cameras have been assigned the correct address. You may need to change the NVR's 'Internal NIC IPv4' address as this must be on a different subnet to the router.