

manything...^{PRO}

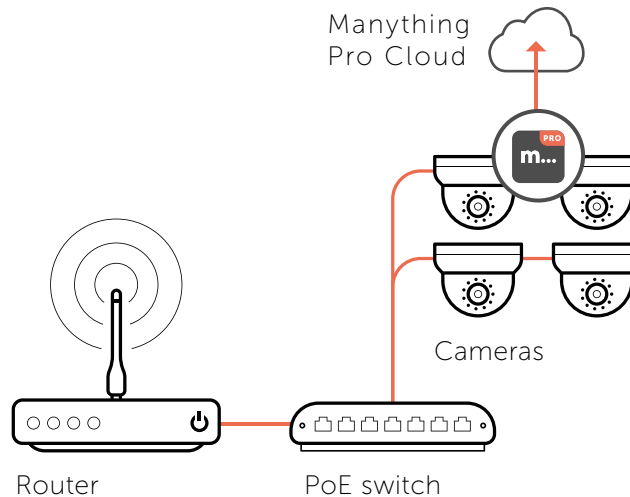
Installation Guide

IP cameras recording directly to cloud (no local NVR)



V1.1 - Dec 2018

1. How it works



2. Pre-installation

2.1 Installation device

- All you'll need to connect your cameras to the Manything Pro cloud is a smart phone or tablet running:
 - iOS 10 or above if you're using an Apple device
 - Android 4.2 or above if you're using an Android device

2.2 Compatible IP cameras

- For the latest list of Hikvision IP cameras which are compatible with Manything Pro see [here](#). Note that OEM versions of these models are not compatible.

2.3 Subscriber account creation

- You'll need to create an account for your subscriber before you set up their cameras. To do this log into the Manything Pro partner portal [here](#)
- Once you have logged in, go to 'Subscribers' and press 'Add new'
- You'll be asked to create their username/password and select their cloud recording plan



Tip 1 – Run installation before going on site

You might find it more convenient to set up the cameras on your customers account before going on site. Just follow the steps in section 3 then disconnect the cameras once you have finished, then when you get to the customer's location all you'll need to do is connect the cameras to network and *then* power.



Tip 2 – Use an SD card for network outage redundancy

If a camera has an SD card slot we'd recommend inserting one. You don't need to do any configuration, our software handles it all for you. If the network goes down we'll automatically save the video events to the SD card, then when the network is restored we'll send the video straight up to the Manything Pro cloud. On average you'd need 5GB to save 7 days video.

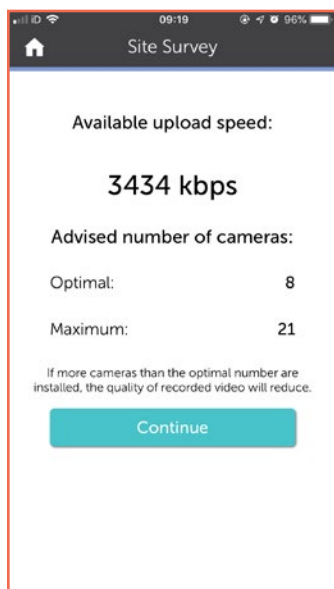
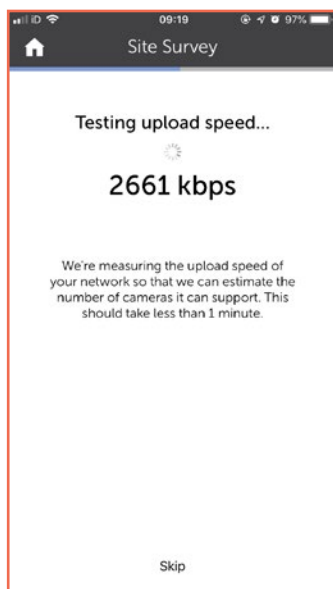
3. Installation

3.1 Network

- Make sure that the smart phone or tablet you are using for the installation is on the same network as the cameras. Check that you have the latest version of the Manything Pro app and log in with the credentials you created for your subscriber.

3.2 Bandwidth test

- Tap 'Install IP cameras' on the main menu to begin the installation process. The app will run a network speed test each time you begin an installation on a new network, this will tell you how many cameras the network can support.



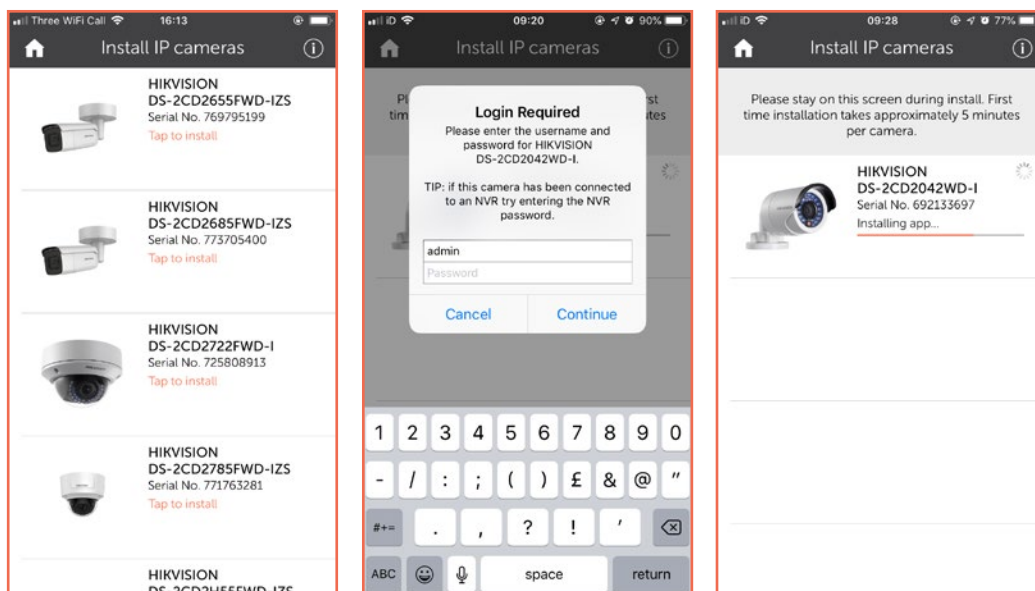
Optimal = Recommended number of cameras to run comfortably at default recording specs

Maximum = Maximum number of cameras the network could support, at lower recording specs (our software will dynamically lower the video quality if needed to support a larger number of cameras or in poor network conditions)

Note: If you install more cameras than the advised maximum, the cameras could discard video if there is not enough bandwidth to send it up to the cloud

3.3 Discovering cameras and installing software

- Once the bandwidth test is complete, tap 'Continue'. The app will then scan the network for compatible cameras and display its findings. Tap the cameras you want to set up with Manything Pro to start the installation, you can do multiple at once.
- You'll be prompted for the camera admin passwords (or asked to set new ones if the cameras are brand new).
- First time installation takes 3-4 minutes, don't leave this screen or quit the Manything Pro app as this will stop the installation process.



4. Post-installation

- Once the installation is complete, tap the camera
 - Check that the live feed is working (allow time for it to connect)
 - Check that motion activated events are being recorded
 - If the camera is recording directly to the cloud with no local NVR, tap the settings cog and change the 'Storage Mode' to HD – this means that the camera substream will be used for the live stream (standard definition) and the camera mainstream will be used for the cloud recordings (1080p)

