



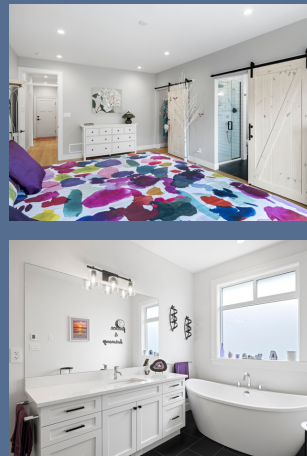
PARKHURST
PLACE



1320 Parkhurst Place

\$1,266,000

1320 Parkhurst Place



Modern design elements blended intelligently to create a visually appealing, comfortable, easy-living environment. Welcome home - take a breath and relax. This custom-built 3 bed 2 bath almost new rancher includes so many great features - and none of the new-build GST headaches! Pride of ownership is ultra-evident from the seen factors such as the gorgeous yard and water feature - to the less evident factors like gas forced air furnace, a/c, on demand hot water and RV parking with services. You, family and guests will enjoy time here mingling in the gorgeous kitchen with a chef's dream pantry. Spread out snacks and beverages on the quartz countertops, have a more formal meal in your bright dining room or sit around the fireplace and chat. An after dinner walk to the beach would be a beautiful finish to a perfect day and the scenery will make your soul sigh.

1320 Parkhurst Place

Interior

- 1,796 sqft rancher
- 3 bedrooms , 2 bathrooms
- Open concept
- Amazing cook's kitchen
- Custom designed pantry
- Quartz countertops in kitchen and bathrooms
- Seating at kitchen island
- Premium stainless steel kitchen appliances
- Soft-close cabinets & drawers
- Subway tile backsplash
- Under cabinet lighting
- Built in hutch
- French doors off the dining room
- Cozy gas fireplace
- Media storage
- Private master suite
- White washed barn doors
- Tiled shower
- Freestanding bathtub
- Heated ceramic tile in ensuite
- Walk in closet
- Separate bright laundry room
- Engineered hardwood flooring
- Closet organizers
- Transoms over bedroom doors
- Elegant lighting fixtures throughout
- 4' heated crawl space
- Two car garage
- Storage above the garage with pull down ladder

Exterior

- 7,370 sqft lot
- RV parking with services
- Sunny private backyard
- Easy care Hardieplank siding
- Beautifully landscaped low maintenance yard
- Oversized sealed concrete patio
- Water feature
- Complete irrigation system with timer
- Fenced
- Hot water hose bib

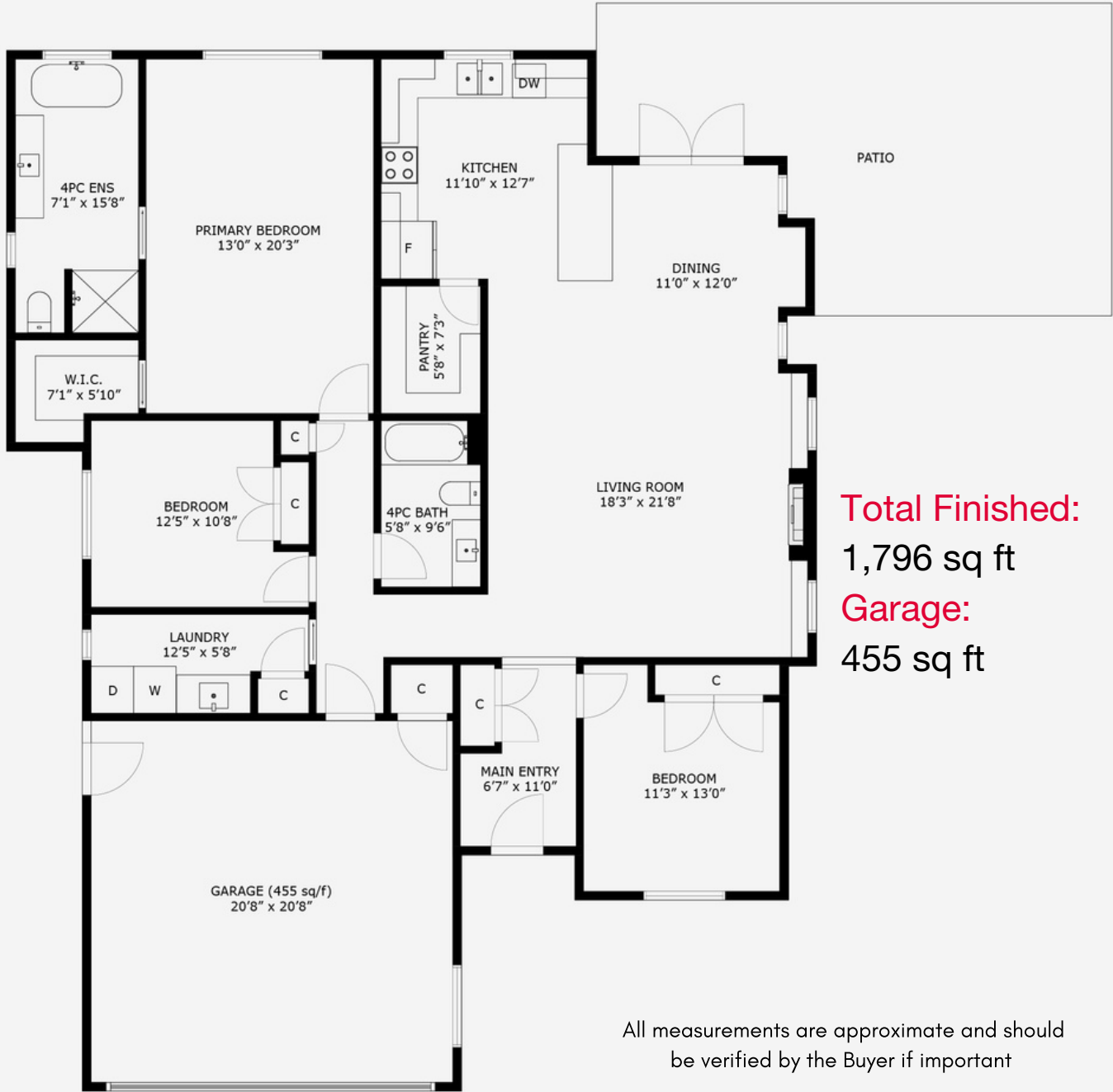
Mechanical

- On demand hot water tank
- Gas forced air furnace
- Air conditioning
- HRV - Heat Recovery Ventilator
- Gas fireplace
- Central vacuum roughed in
- BBQ box

About Parkhurst Place

Parkhurst Place is a premier 18 home subdivision at the south end of Parksville, nestled next to Craig Bay. This prime location means that Parkhurst has something for everyone right your doorstep: grab a coffee at the local coffee shop, enjoy the restaurants, attractions and spa along Resort Drive, hike the Englishman River trail, or stroll down the tranquil arbutus-lined trail towards sandy beaches and spectacular sunsets.

1320 Parkhurst Place



Total Finished:
1,796 sq ft
Garage:
455 sq ft

All measurements are approximate and should be verified by the Buyer if important

