



  
**ENGEL & VÖLKERS**  
PRIVATE OFFICE

**Once in a Generation Family Lakeside Home**  
**Dock. Beach. Vineyard. Elevator**  
**225 Swick Rd. Kelowna, BC.**

  
**ENGEL & VÖLKERS®**



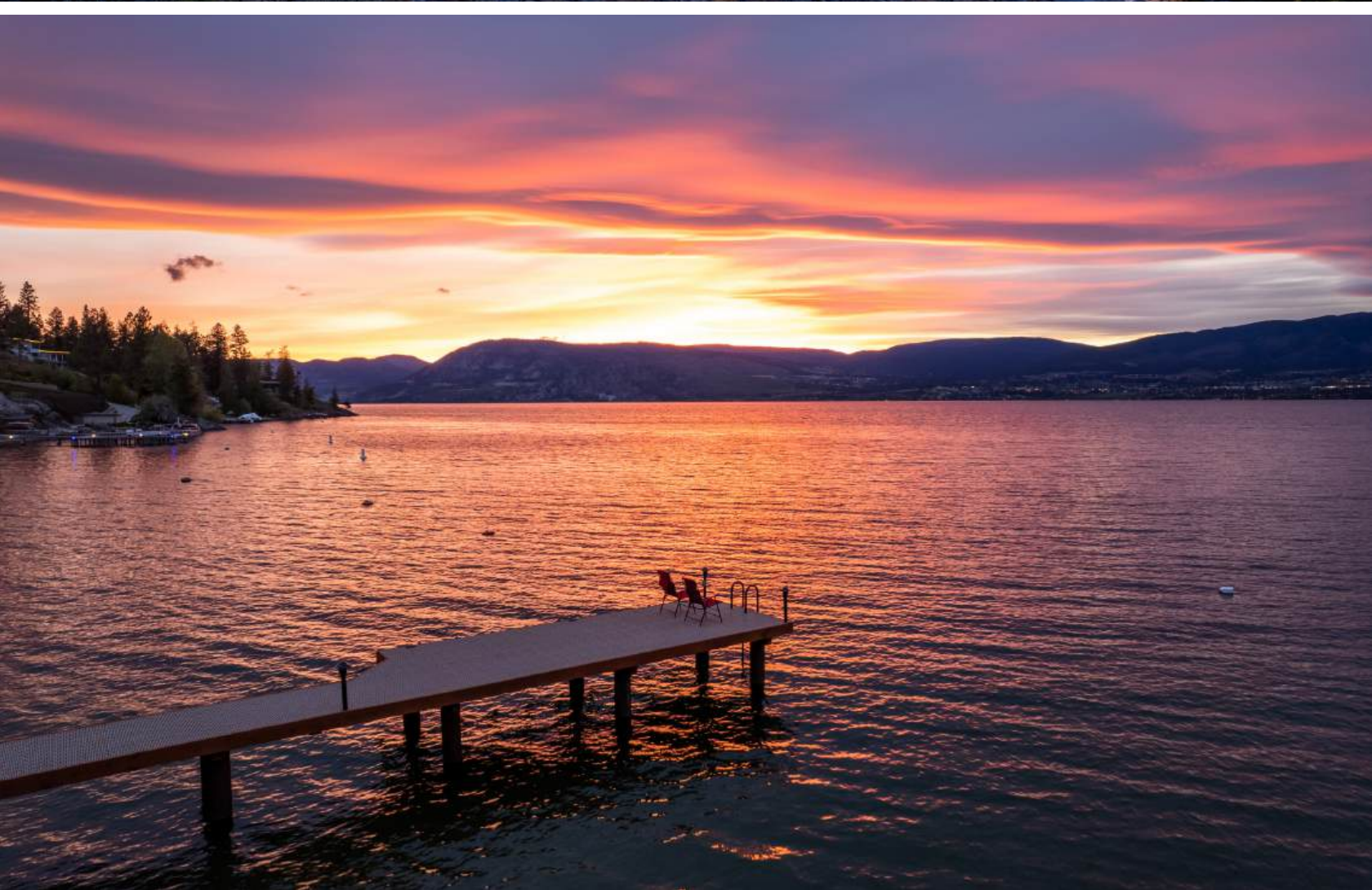
Private vineyard Chardonnay vines. Mins to the award winning Cedar Creek + Martins Lane wineries, Bertram Park and the amenities of Lower Mission. Quality built in 2007 with Chriscan Construction. A turn key furniture pkg. is available upon request.



## Key Facts & Features

- 2.31 private acres
- 160' lakefront
- Private vineyard
- New licensed dock
- Sandy beach
- Heated driveway
- Elevator
- Hot tub
- Outdoor kitchen
- 4 car garage
- Geo-thermal heating/cooling
- 6 bdrm + 8 bath
- Office
- Gym
- Sauna
- Built from solid stone
- Slate tile roof
- 3 patios
- Mins to #1 ranked Homeblock restaurant
- Mins to the famous Martins Lane Winery
- Automation + Smart home
- Pool table
- Best in class stone and millwork
- The ultimate family cottage









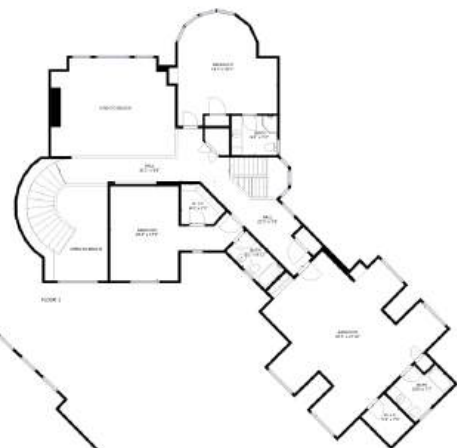
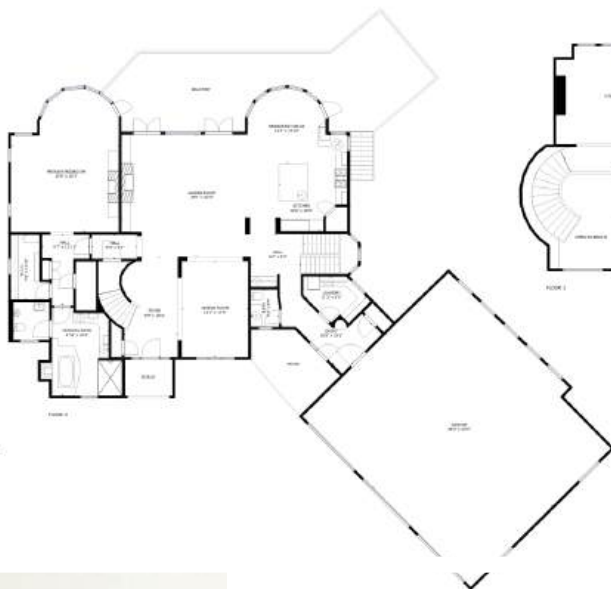








# 225 Swick Rd. Kelowna, BC.



Richard James Deacon

**Phone** +1-250-801-8831

**E-mail** [richard.deacon@evcanada.com](mailto:richard.deacon@evcanada.com)

[www.richardjamesdeacon.com](http://www.richardjamesdeacon.com)

**ENGEL & VÖLKERS**<sup>®</sup>  
RICHARD JAMES DEACON