

Copple Real Estate

**#3 6400 Princess Lane,
Richmond**

July 30 2025

BEYOND
MEASURING

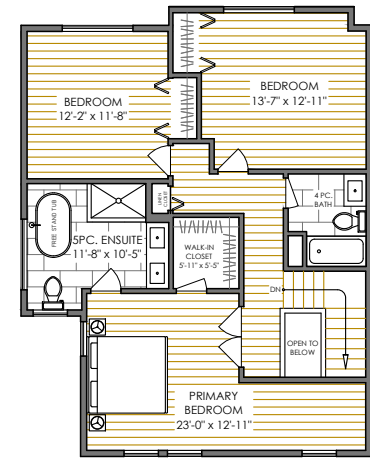


Jody Copple

Copple Real Estate Group
 www.Jodycopple.com
 Jody@macrealty.com
 604.818.7957

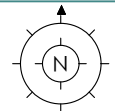


LOWER FLOOR
 572 SQ.FT
 7'-6" CEILING HEIGHT



UPPER FLOOR
 966 SQ.FT
 8'-0" CEILING HEIGHT

| FLOOR | AREA(SQ.FT) | | | | |
|-----------------------------------|-------------|------------|--------------|---------|--------|
| | FINISHED | PORCH/DECK | PATIO/GARDEN | STORAGE | GARAGE |
| UPPER | 966 | — | — | — | — |
| MAIN | 1032 | 228 | 960 | — | — |
| LOWER | 572 | — | — | 87 | 523 |
| TOTAL FINISHED: 2570 SQ.FT | | | | | |



#3 6400 Princess Lane, Richmond

THE FLOOR PLAN IS NOT SUITABLE FOR CONSTRUCTION/ARCHITECTURAL PURPOSES.EVERY EFFORT HAS BEEN MADE TO REPRESENT ALL DIMENSION ACCURATELY. E&O INSURED.

BEYOND
 MEASURING