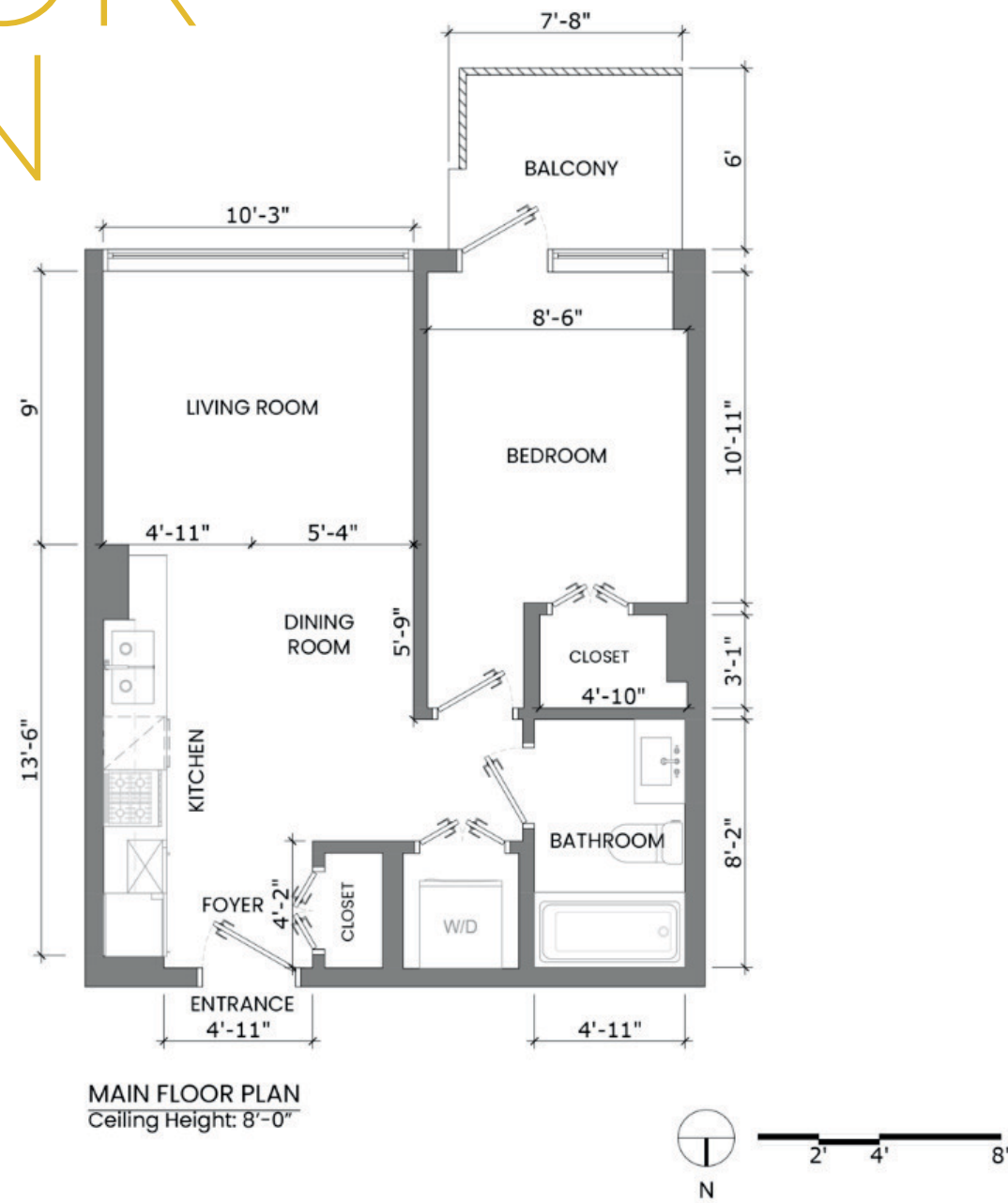


# FLOOR PLAN

- INTERIOR: 485 SQ. FT
- BALCONY: 44 SQ. FT



# 1510-1888 KEEFER STREET

DOWNTOWN



**CHRISTIOSECO**  
PERSONAL REAL ESTATE CORPORATION

400-1286 HOMER ST,  
VANCOUVER, BC V6B 2Y5

E: CHRIS.TIOSECO@GMAIL.COM  
P: 604.512.1000



**CHRISTIOSECO**  
PERSONAL REAL ESTATE CORPORATION

400-1286 HOMER ST,  
VANCOUVER, BC V6B 2Y5

E: CHRISTIOSECO@GMAIL.COM  
P: 604.512.1000



**ASKING PRICE**

**\$499,000**

**FEATURES**

- Open Concept Floorplan
- 1 Bed / 1 Bath
- 485 Sq. Ft Interior
- 44 Sq. Ft. Balcony
- European Appliance Package
- Gas Cooktop
- Great City and Water Views
- Spa-like Bathroom

**PROPERTY DESCRIPTION**

WELCOME TO 188 KEEFER BY WESTBANK - This sleek and sophisticated 1 bedroom unit has been immaculately maintained: Miele and Blomberg stainless steel appliances, gas cooktop, granite counters & backsplash, insuite laundry, laminate & tile flooring, open layout with no wasted space, and private balcony w/great city/water views. 188 Keefer Residents have private access to over 6,500 sqft of indoor and outdoor amenities: gym, great party room with kitchen and large dining area, and rooftop terrace w/garden, lounge, and outdoor kitchen/BBQ area with fireplace.

<b>PROPERTY TYPE</b>	<b>LIVING AREA</b>	<b>STRATA FEES</b>
CONDO	485 SQ. FT	\$350.18

<b>BEDROOMS</b>	<b>BALCONY</b>
1	44 SQ. FT

<b>BATHROOMS</b>	<b>INSUITE LAUNDRY</b>
1	YES

**NEARBY  
ATTRACTIONS**

- Nestled in the heart of Chinatown, steps away from Gastown & Yaletown parks, restaurants, fitness studios.
- Close proximity to Seawall, BC Place, Rogers Arena, Costco and T&T.
- Walkable to 2 different skytrain stations: Main Street & Stadium Chinatown.



**5 MIN WALK**  
Distance to Transit



**1 MIN WALK**  
Distance to Shopping



**25 MIN DRIVE**  
Distance to Airport



**1 MIN WALK**  
Distance to Groceries