



# PERRY HOOGVELD

ABR  
SRES

REAL ESTATE SPECIALIST

C 604-240-1220  
www.hoogie.com

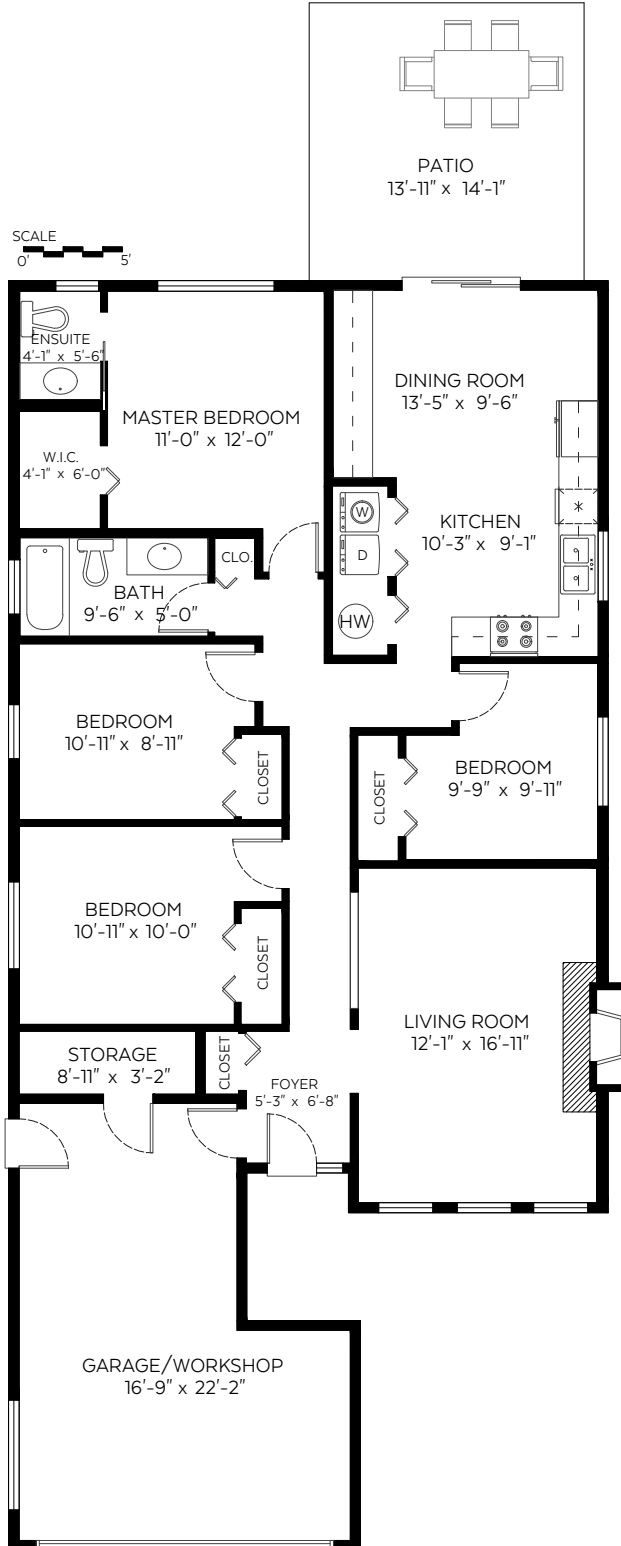
Service that Follows the Sale



RE/MAX Westcoast  
110-6086 Russ Baker Way  
Richmond, BC V7B 1B4

11411 Kestrel Drive,  
Richmond, B.C.

Main Floor:	1,325 sq.ft.
Ceiling Height:	8'-0"
<b>Auxiliary Area</b>	
Garage/Workshop:	373 sq.ft.
Patio:	196 sq.ft.



Valid Until: November 03, 2022



The floor plan is not suitable for architectural/construction and is covered under E&O. © Excelsior Measuring Inc. 2019. All rights reserved for Excelsior Measuring Inc. Users shall not publish and distribute such material (in whole or in part) and/or incorporate it in other works in any form.



NORTH