

BRIGHT & STYLISH CORNER TOWNHOUSE

SAF

19 SAGE BLUFF GATE NW





18

Sage Bluff Gate NW

PRICE

\$475,000

DETAILS

Size: 1,233 SF

Bedrooms: 2

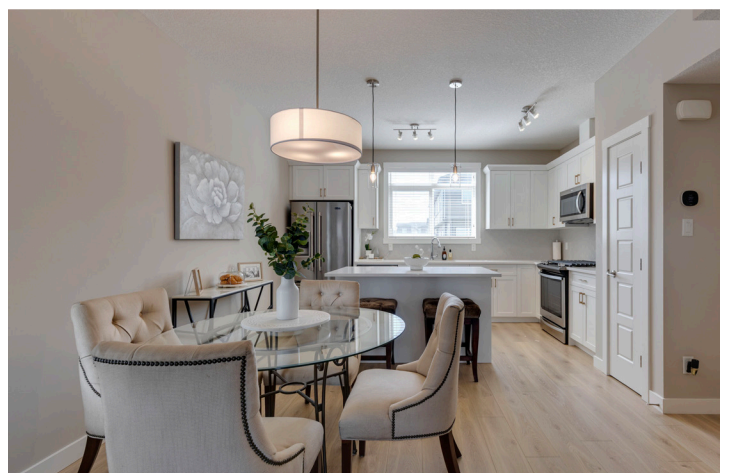
Bathrooms: 3

Taxes: \$3,124/2025

Year Built: 2020

LIGHT, AIRY & FRESH





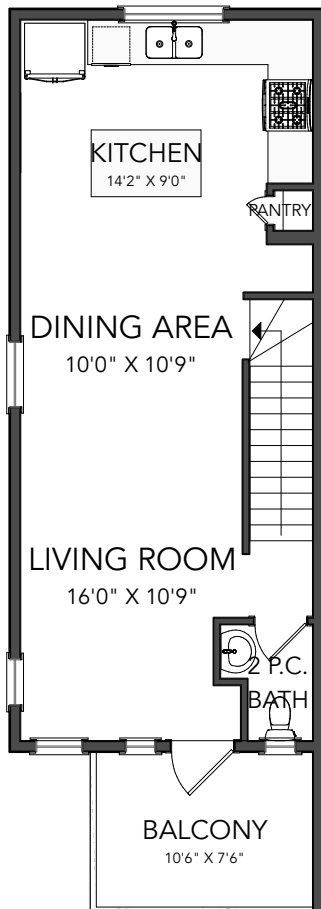
METICULOUSLY MAINTAINED

With light pouring in from every angle, this impeccably designed 2020 constructed corner-unit townhouse feels fresh, bright and instantly inviting. In collaboration with a professional designer, every finish from the classic white kitchen to the quartz countertops was thoughtfully selected for timeless style and everyday comfort. The open concept main floor offers a spacious living space with room for a desk nook for working from home, a bright dining area for weeknight meals, and plenty of space to relax together. A stylish kitchen with stainless steel appliances including a French door fridge, and a striking tile backsplash beckons you to try out new recipes. Step outside to your private balcony for your morning coffee, evening grilling, or simply enjoying the fresh air, sheltered by a privacy wall. Upstairs, both bedrooms offer double closets and private ensuites, providing comfort and convenience for guests or a roommate. Laundry is neatly tucked into the upper hallway. The attached tandem double garage provides parking plus generous storage space for seasonal gear. With 9' ceilings on the main floor, a neutral colour palette, and meticulous upkeep, this move-in ready home feels airy and welcoming. Located just minutes from the shopping at Cross Iron Mills, as well as grocery stores, restaurants and pubs. Enjoy quick access around the city from Stoney and Deerfoot Trail. There are pathways, parks, and playgrounds nearby to explore. **This home blends convenience with lifestyle and is ideal for a first-time buyer, young couple, small family or busy professional. Book your private tour and see why this is the perfect fit.**



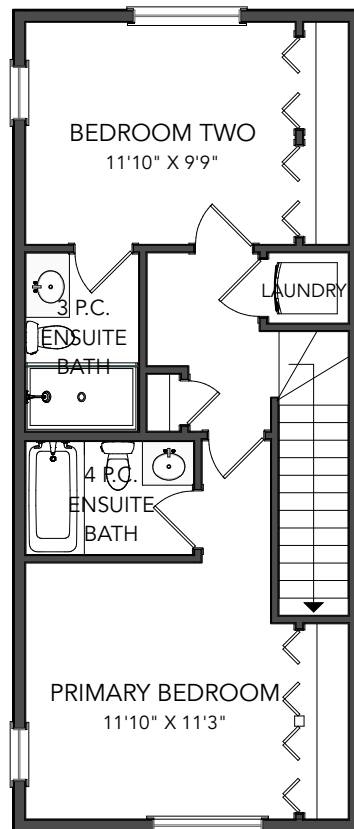


FLOOR PLANS



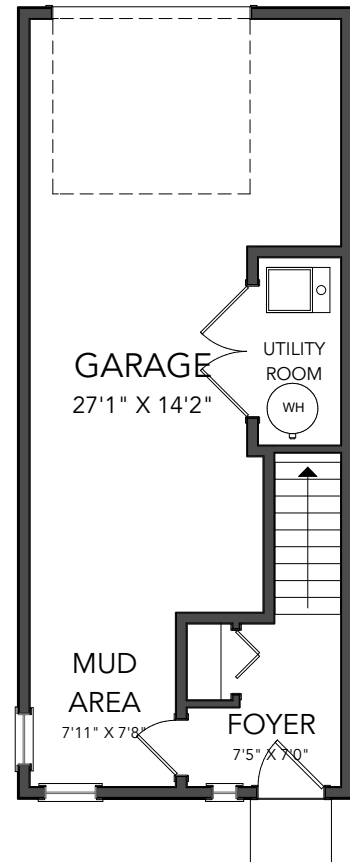
MAIN LEVEL

546 SF



UPPER LEVEL

546 SF



ENTRY LEVEL

141.32 SF

HIGHLIGHTS

- BUILT IN 2020
- PROFESSIONAL DESIGNER-SELECTED FINISHES
- 9' CEILINGS ON MAIN FLOOR
- QUARTZ COUNTERTOPS
- TWO BEDROOMS EACH WITH ENSUITE
- UPPER FLOOR LAUNDRY

For comprehensive details and
exclusive viewings, contact us:

Sam Corea

403.686.7800

sam@samcorea.com



samcorea

RE/MAX
HOUSE OF REAL ESTATE

samcorea.com