



\$1,599,000

1-1260 KASLO STREET

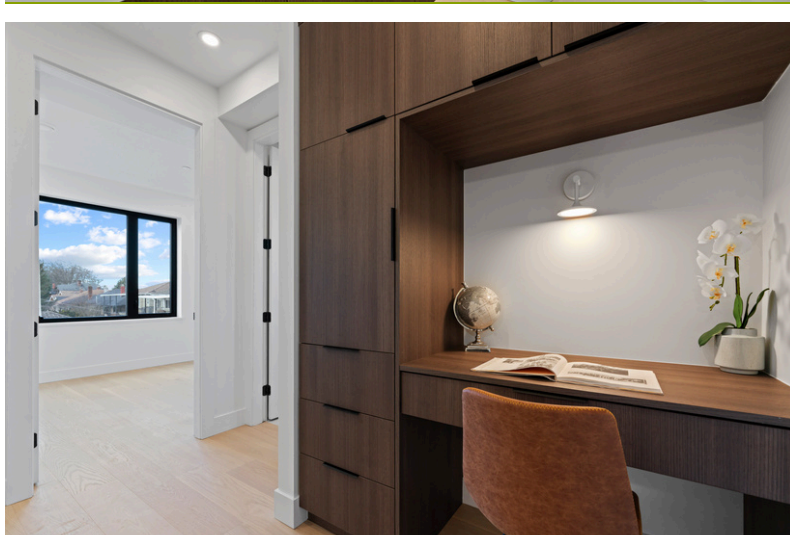
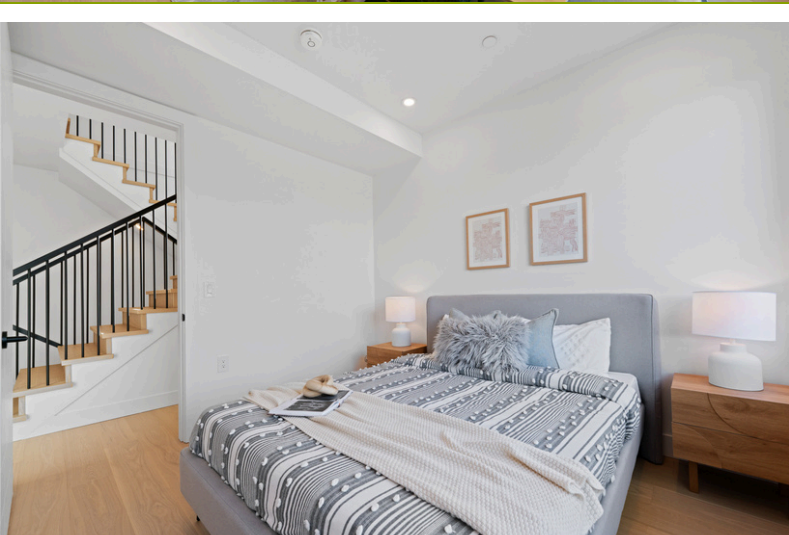
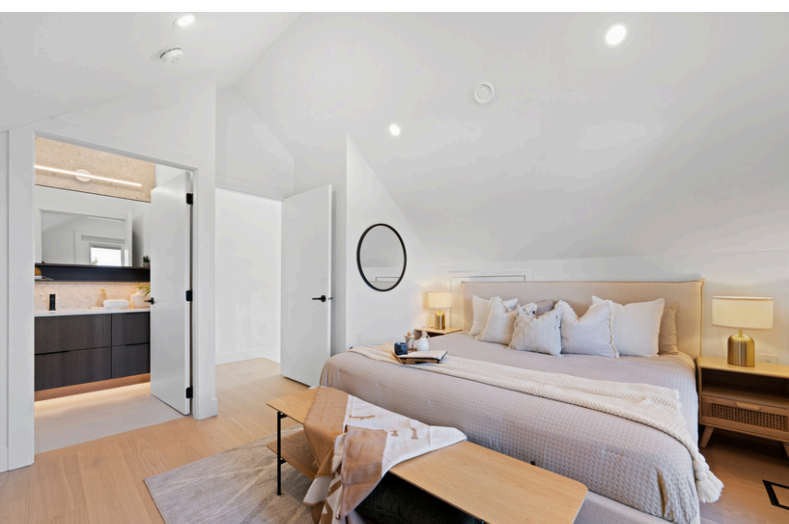
MLS: R2979620



Contact Us to Learn More:

(604) 243-0669
info@hammergrouprealtors.com
@hammergrouprealtors
hammergrouprealtors.com





ABOUT

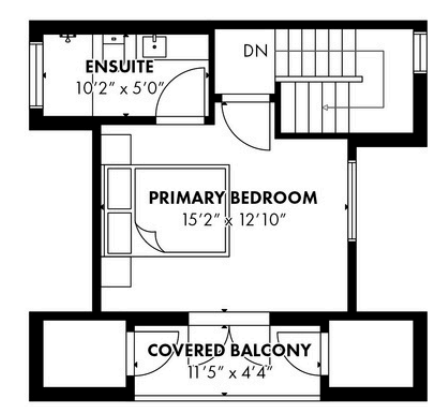
This luxurious front duplex epitomizes thoughtful design & superior craftsmanship. Flooded with natural light from oversized windows along with the open-concept layout creates a real sense of space. The modern interior features premium finishings, white oak flooring & custom millwork. Nano-doors open up to extend your indoor to outdoor living space. Built-in sound system, AC, & kitchen boasting high-end Fisher Paykel appliances. Upstairs has 3 spacious bedrooms with vaulted ceilings, including a primary with spa-like ensuite & balcony for private sanctuary. Versatile heated garage with French doors could be used for office or gym. Hang out in your own yard with a great sunny western exposure, perfect for kids, dogs and entertaining. Situated on a quiet tree-lined street near Commercial Drive & Skytrain, this home combines luxury, comfort & convenience. Pavarya Homes' reputation for quality & attention to detail shines through this exceptional home.

GENERAL INFORMATION

BEDROOMS • 3	BATHROOMS • 3	SIZE • 1,558 sq.ft.	BUILT • 2025
PROPERTY TAX • \$0	OUTDOOR AREA • Fenced Yard	PARKING • Garage, single	STRATA FEE • \$0 (self managed)

THE NEIGHBOURHOOD

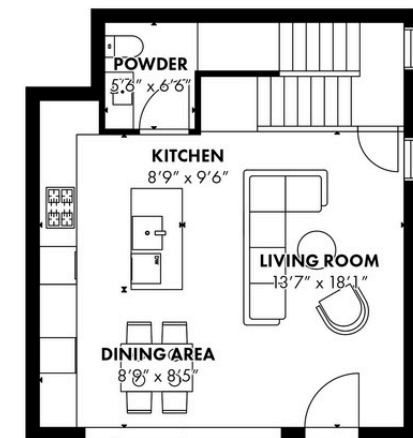
PARKS & ACTIVITY • Hastings Park • Clinton Park • Hastings Community Centre	GROCERIES & GOODS • Choices Markets • Bosa Foods • T&T Supermarket • Donald's Market	FOOD & DRINKS • Whiskey Six BBQ • Romilano Pizza • Sooya Cafe • To Live For Cafe	SCHOOLS • wək'wa'həs tə syaq'wəm Elementary • Templeton Secondary
---	---	---	--



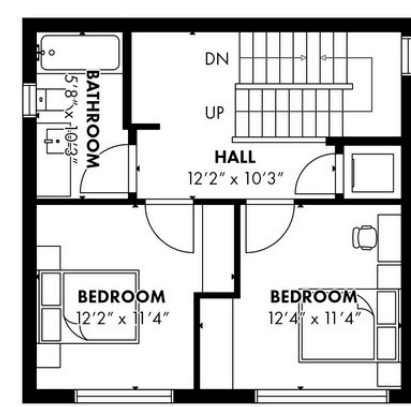
1260 Kaslo Street (Front)
Vancouver, BC

First Floor	587sqft
Second Floor	537 sqft
Third Floor	434 sqft*
Living Area	1,558 sqft
Storage	26 sqft
Balcony	60 sqft

*Includes low ceiling



First Floor: 587 sq.ft.



Second Floor: 537 sq.ft.

Floor plan is not suitable for architectural/construction purposes. Sizes and dimensions are approximate, buyer to verify.