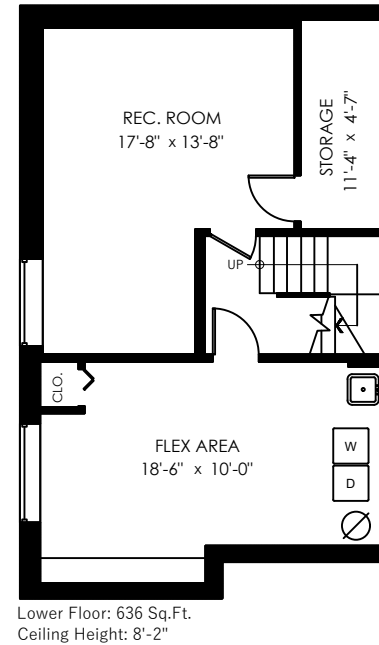
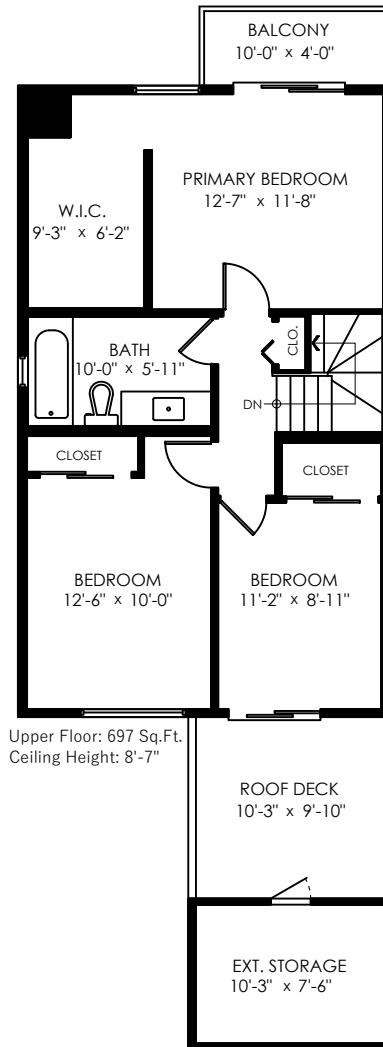
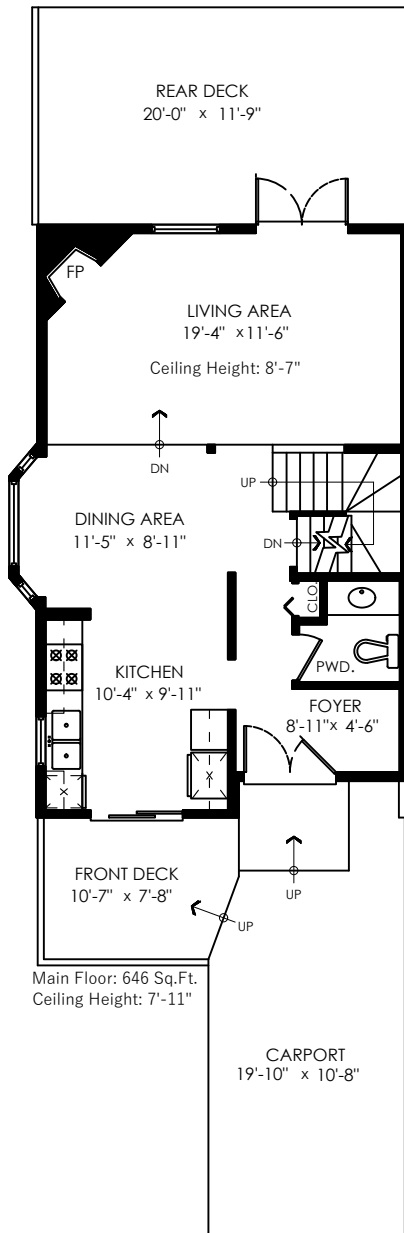


# 2601 Fromme Rd. North Vancouver, BC



Main Floor	646 SQ.FT.
Upper Floor	697 SQ.FT.
Lower Floor	636 SQ.FT.
<b>Total</b>	<b>1979 SQ.FT.</b>

Rear Deck	240 SQ.FT.
Front Deck	84 SQ.FT.
Roof Deck	109 SQ.FT.
Balcony	44 SQ.FT.
Ext.Storage	92 SQ.FT.
CarPort	251 SQ.FT.
<b>Total Extras</b>	<b>820 SQ.FT.</b>



Jenny Gill PREC\*  
604- 561-9802  
jenny@jennyandsuzanne.ca  
www.jennyandsuzanne.ca

Suzanne Callaghan PREC\*  
604-230-9339  
suzanne@jennyandsuzanne.ca

Stilhavn Real Estate Services  
143-1199 Lynn Valley R.d  
North Vancouver BC V7J3H1

**stilhavn**  
REAL ESTATE SERVICES