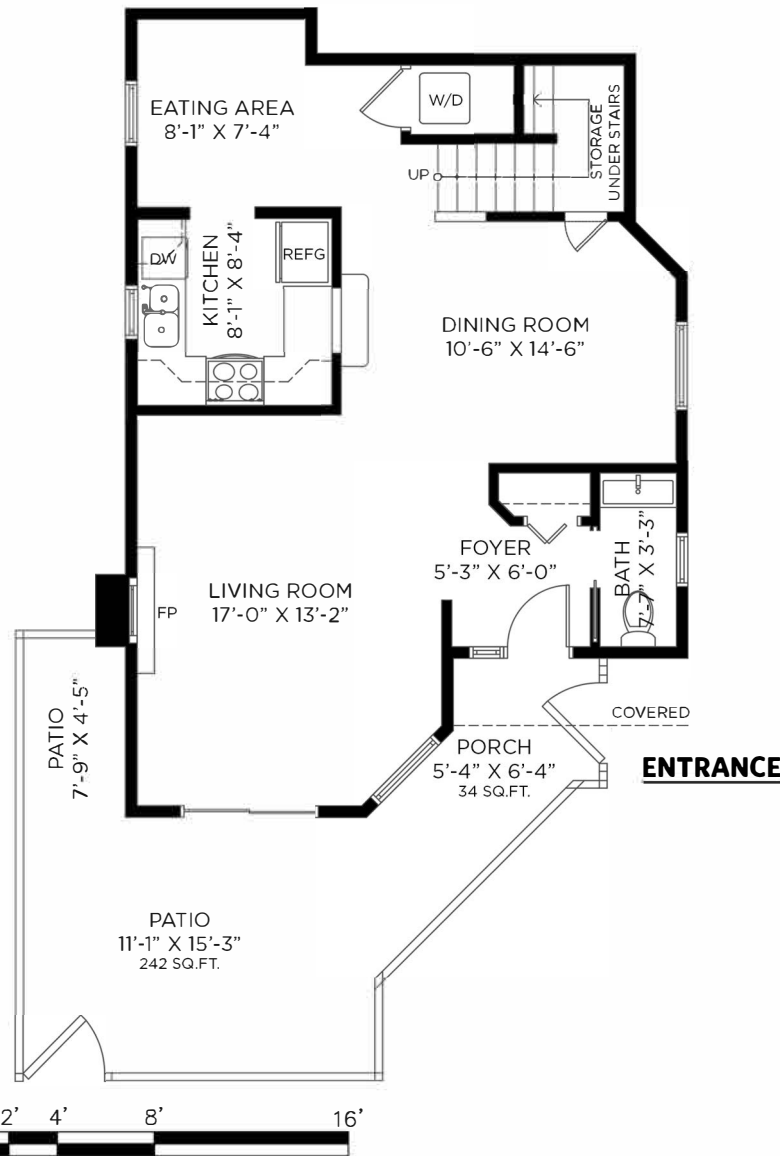


#20-838 TOBRUCK AVE NORTH VANCOUVER, BC

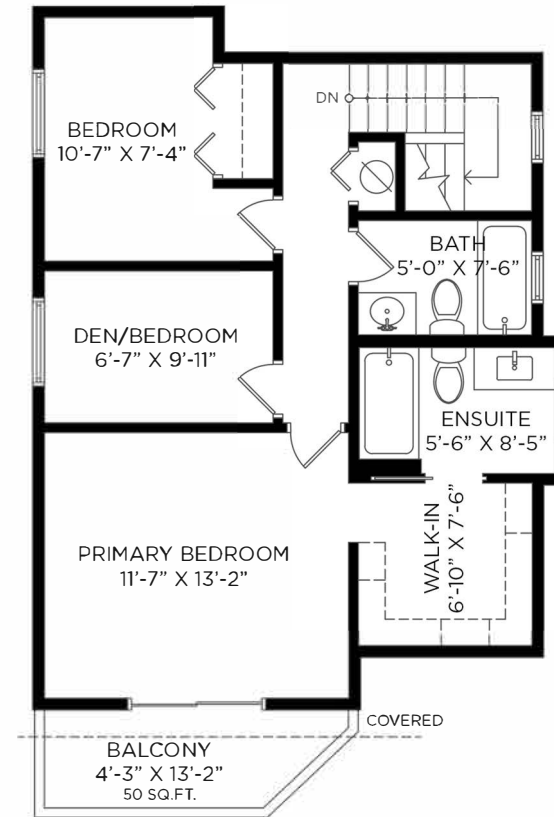
2 BEDROOMS + DEN + 2 1/2 BATHROOMS

MAIN FLOOR - 733 SQ.FT.
CEILING HEIGHT: 8'-0"



MAIN FLOOR: 733 SQ.FT.
UPPER FLOOR: 638 SQ.FT.
TOTAL INTERIOR: 1,371 SQ.FT.
EXTERIOR LIVING: 326 SQ.FT.

UPPER FLOOR - 638 SQ.FT.
CEILING HEIGHT: 8'-0"



OAKWYNREALTY

jenny + suzanne
REAL ESTATE ADVISORS

Jenny Gill PREC*
604-561-9802
jenny@jennyandsuzanne.ca
www.jennyandsuzanne.ca

Suzanne Callaghan PREC*
604-230-9339
suzanne@jennyandsuzanne.ca

Oakwyn Real Estate Services
101-3151 Woodbine Dr.
North Vancouver BC V7J3H1

Floor plan not suitable for architectural/construction purposes. ANSI Z765 standard used to calculate square footage. Buyer to verify.