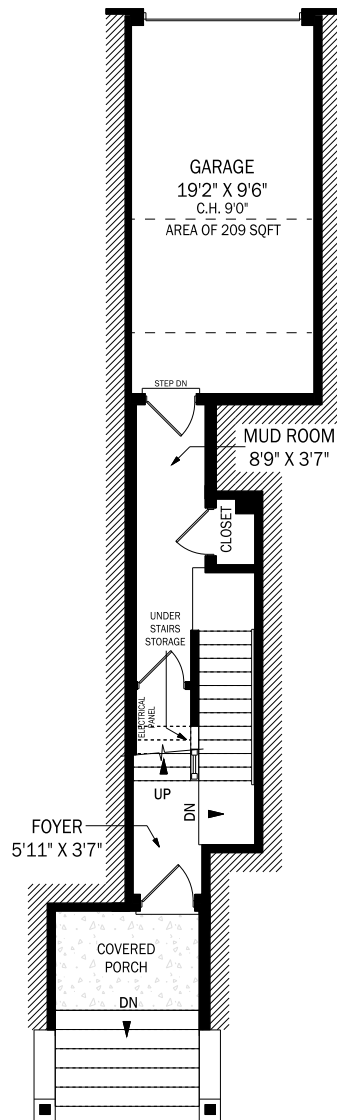
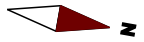
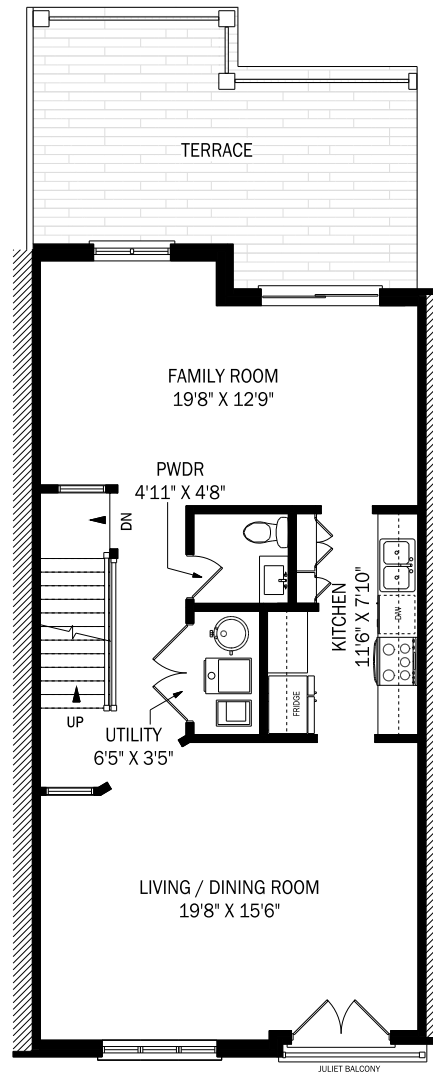


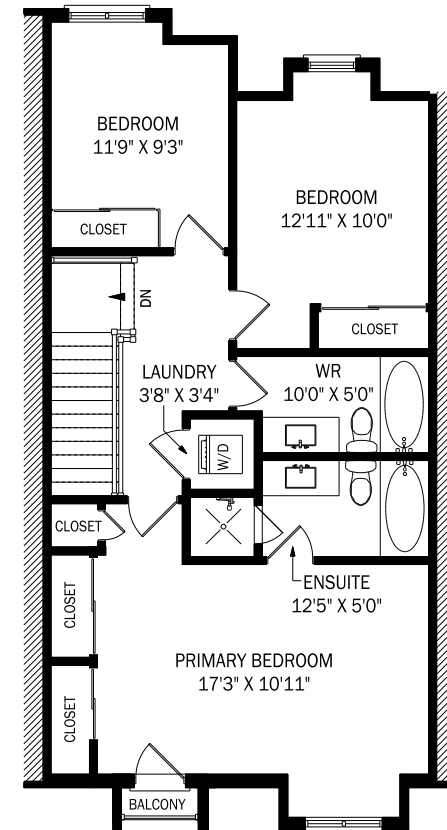
3-130 STRACHAN AVENUE, TORONTO



CEILING HEIGHT 8'0"
GROUND LEVEL - 44 SQUARE FEET
LOWER LEVEL - 129 SQUARE FEET



CEILING HEIGHT 8'0"
MAIN LEVEL - 839 SQUARE FEET



CEILING HEIGHT 8'0"
UPPER LEVEL - 806 SQUARE FEET

