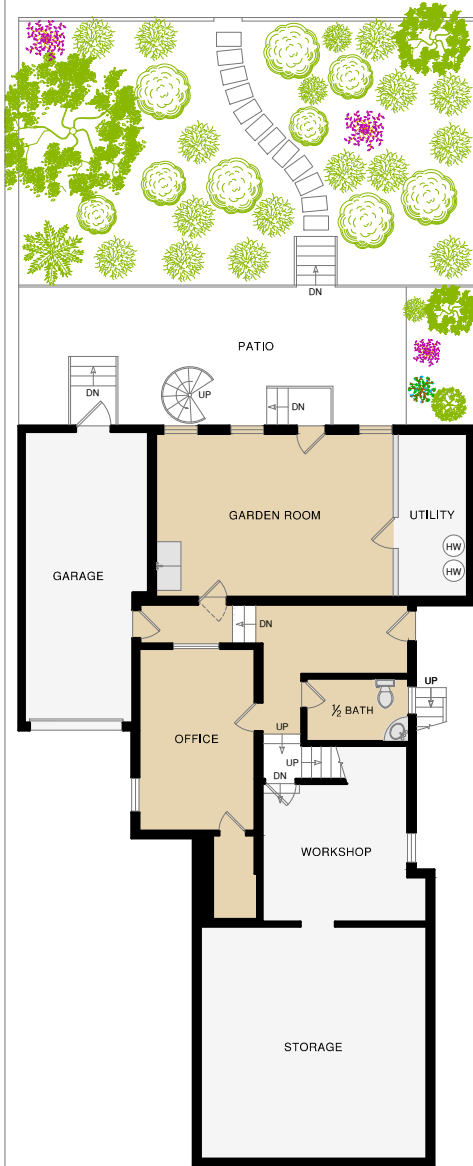


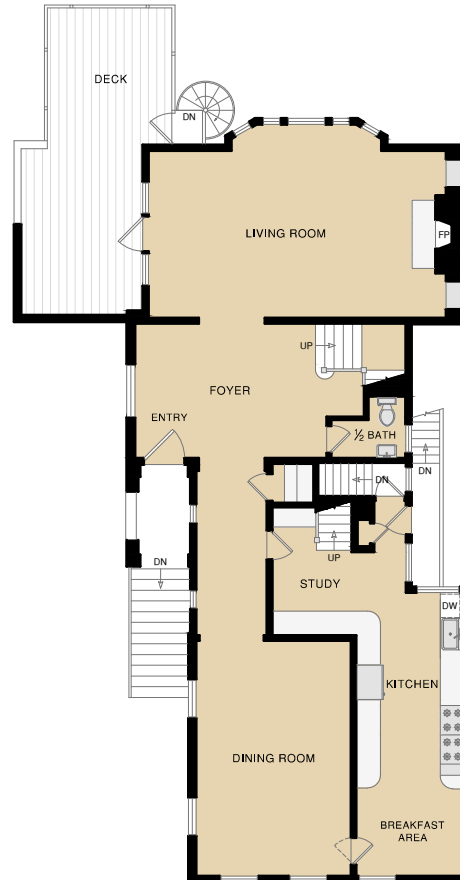
3045 PACIFIC AVENUE

SAN FRANCISCO, CA

4,810 SQ FT



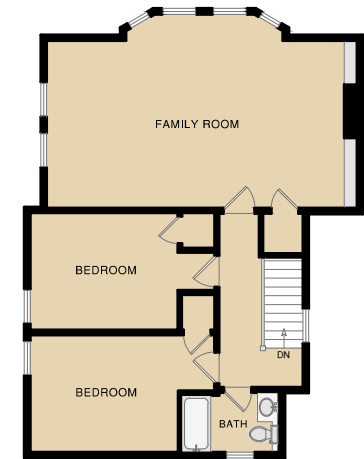
FIRST LEVEL
745 SQ FT



SECOND LEVEL
1,555 SQ FT



THIRD LEVEL
1,565 SQ FT



FOURTH LEVEL
945 SQ FT

NOTE: SQ FT DATA HAS BEEN DERIVED PER THE EXTERIOR FACE OF ALL BOUNDARY WALLS.
NOTE: SQ FT FIGURES ARE ESTIMATES ONLY AND HAVE BEEN DERIVED SIMPLY FOR THE MARKETING-STYLE FLOOR PLANS DEVELOPED BY OPEN HOUSE DRAFTING.