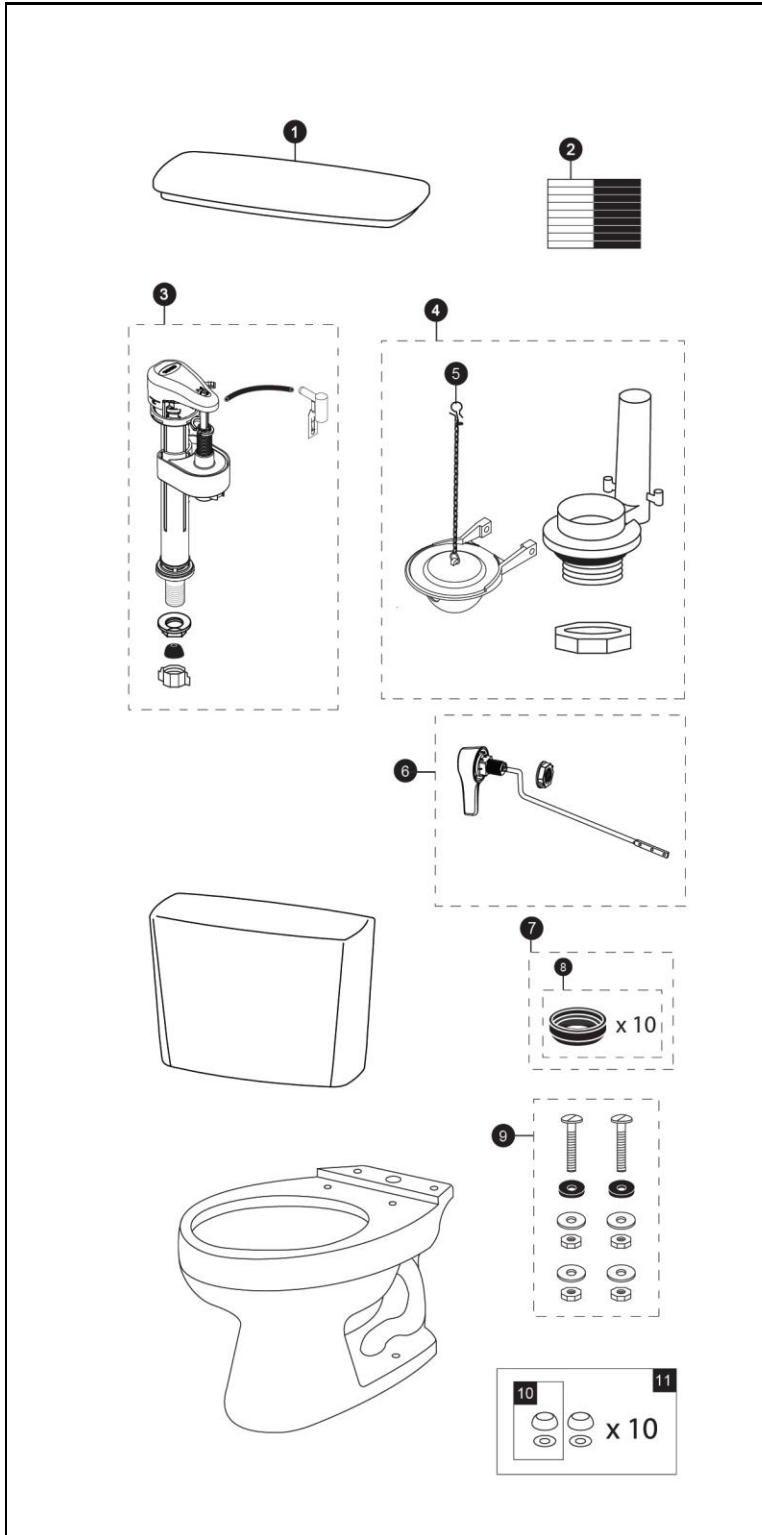


CST744EFN.10
ST744E
C744EF.10

CST744EFRN.10
ST744ER

EcoDrake® Transitional 1.28 Gpf Toilet, Elongated, E-Max®, 10" Rough-In Universal Height

Item	Part	Description
1	TCU744CRE#01	Tank Lid w/ Velcro Tape
2	THU107	Velcro Tape
3	TSU53A	Fill Valve
4	THU252P-A	Flush Valve Assembly with Flapper
5	THU499S	Flapper w/ Chain & Clip
6	THU398#CP THU399#CP	Trip Lever, Left Hand Trip Lever, Right Hand
7	THU131	Tank to Bowl Gaskets (for 10 toilets)
8	9BU024E	3" Tank to Bowl Gasket
9	TSU01D	Tank Mounting Kit
10	THU044#01	Bolt Cap Set (for 1 toilet)
11	THU098#01	Bolt Cap Sets (for 10 toilets)



Note:

Product Number Explanations

Two-Piece Toilet

(CST) Gravity Type Toilet
(744) Model #
(E) E-Max®
(L) ADA Compliant
(R) Right Hand Option
(N) Model Letter

Tank

(ST) Tank
(744) Model #
(E) E-Max®
(R) Right Hand Option

Bowl

(C) Bowl
(744) Model #
(E) E-Max®
(L) ADA Compliant