

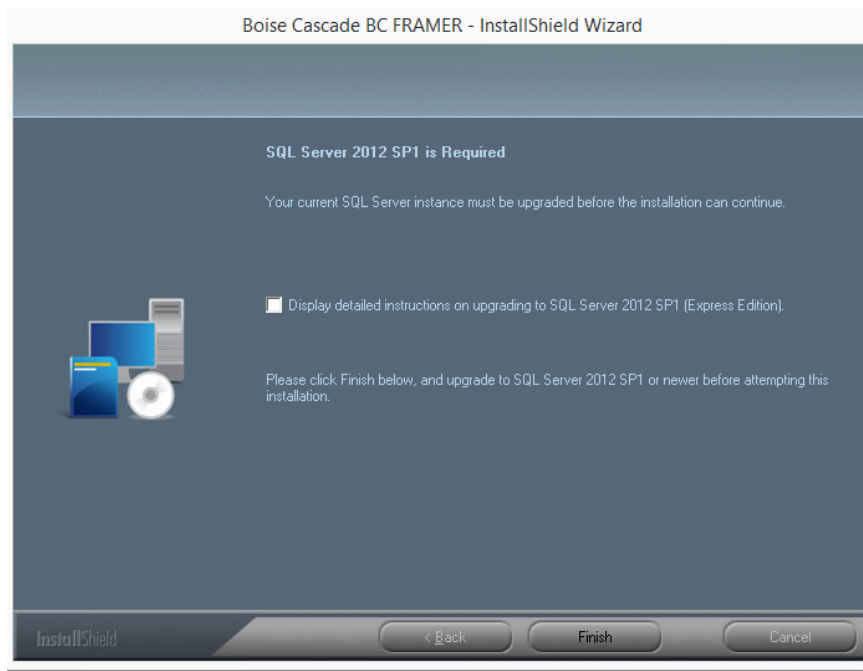
## SQL 2012 Requirement installation process

Clients that have SQL 2008 will be required to install SQL 2012. Follow the steps below to create a new SQL 2102 instance. Once this process is completed the BC FRAMER® 8.1.0 install can be run again.

Note: The 2008 BC FRAMER® database is copied not moved. The original database is retained as a backup copy.

When the BC FRAMER® 8.1.0 install is run on a machine with a 2008 SQL instance the dialog below will be presented.

Click Finish and run the SQL Migration tool as detailed below.



We will now use the SQL Migration tool to satisfy this requirement

The SQL Migration tool is used to:

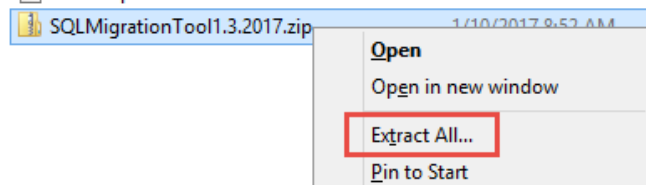
- Install SQL Server 2012.
- Install a new BC FRAMER® database on the SQL 2012 Server.
- Transfer settings from the old BC FRAMER® database.

## 1. Download the SQL Migration tool zip folder:

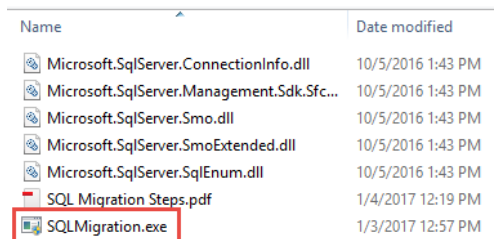
[Click to download the SQL Migration Tool](#)

A. Choose to Save the download to your local drive or desktop, do not Run the tool from the download link.

B. Once the zip folder has downloaded Right click on the folder and choose Extract All.



C. Open the extracted folder - double click SQLMigration.exe to start the tool.



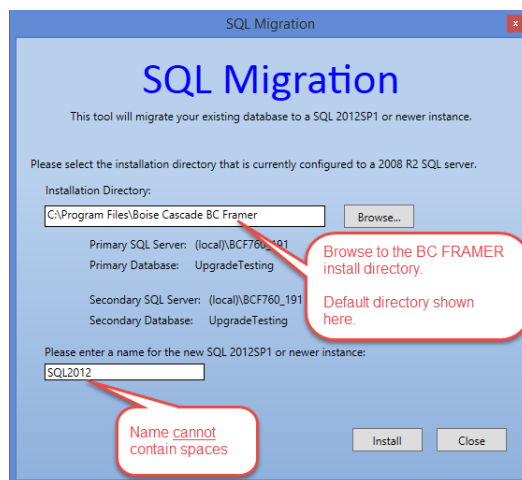
## 2. Run the SQL Migration Tool:

A. Browse to the Installation directory of your BC FRAMER install.

The most common install directory is C:\Program Files\Boise Cascade BC Framer.

B. Provide a name without spaces for the SQL instance - SQL2012

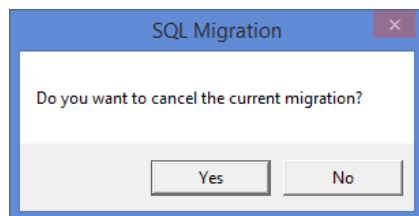
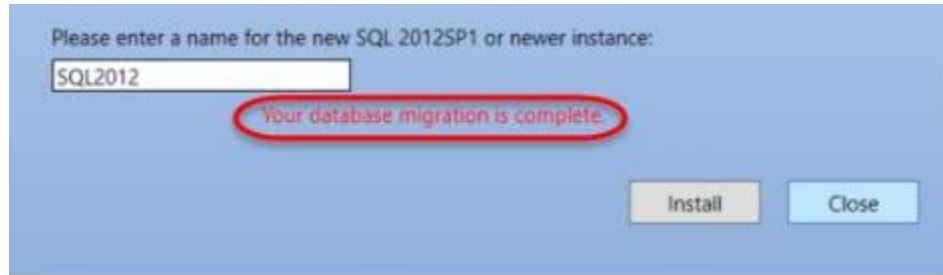
C. Click on the Install button.



NOTE: This process can take a few minutes to complete - do not close the dialog until the red text below is displayed.

After you are notified that the migration has completed, click the Close Button.

If a dialog asks if you wish to cancel the current migration - click on Yes



### **3. Run the BC FRAMER 8.1.0 install again:**

A. SQL 2012 has now been installed and your database setting migrated.

B. Restart the BC FRAMER 8.1.0 install to complete the upgrade.

If you experience any issues or have questions, please contact Boise Cascade EWP Software Support.

EWPSupport@bc.com  
800-405-5969