

## **TBD, Alma**

Breckenridge Mountain Estates, Lot 10, 46.33 acres  
Offered at \$149,900



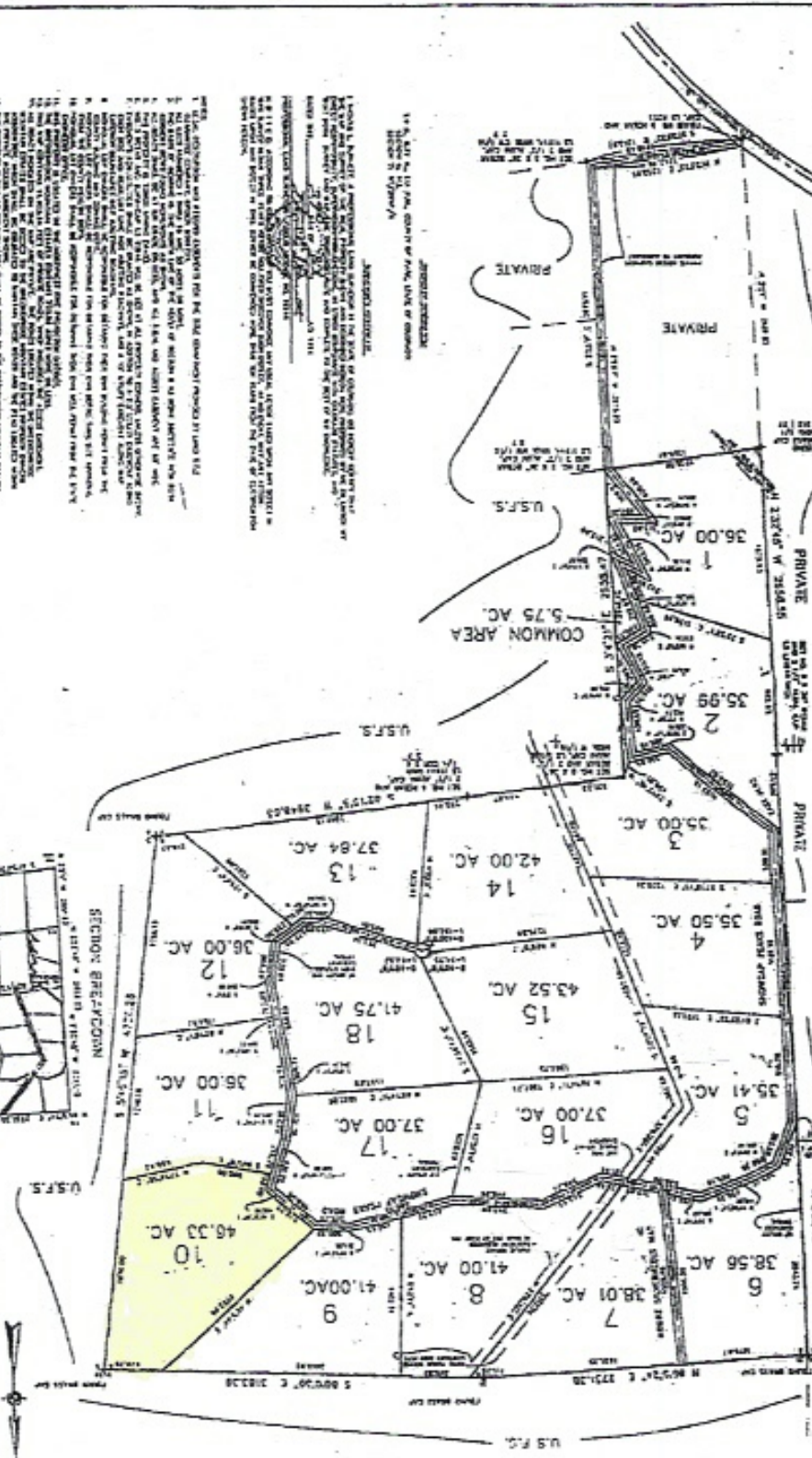
Bonnie Paffenroth,  
Associate Broker  
Office: 719-836-2766  
Cell: 970-406-1610  
bonnie.paff@gmail.com  
[www.canigliagroup.com](http://www.canigliagroup.com)  
2 South Main Street, Alma, CO

Adjacent to National Forest!  
Pristine 46.33 acre parcel with  
spectacular views! Large acreage  
abutting NFS land...perfect for  
outdoor enthusiasts. Ideal location for  
privacy and wildlife. Access is via  
Breckenridge Mountain Estates Road  
or nearby National Forest Road...  
both seasonal. Gorgeous land that  
offers an opportunity for a true  
mountain get away!



# THE BRECKENRIDGE MOUNTAIN ESTATES

## PARK COUNTY, COLORADO



THE BRECKENRIDGE MOUNTAIN ESTATES  
 PARK COUNTY, COLORADO

**THE BRECKENRIDGE MOUNTAIN ESTATES**  
**PARK COUNTY, COLORADO**

1. SHOWS 18 LOTS, PRIVATE & COMMON AREAS, PRIVATE ROADS, SHADES PLACER, AND OTHER FEATURES. THE TOTAL AREA OF THE ESTATE IS 680.00 ACRES. THE TOTAL AREA OF THE COMMON AREAS IS 5.75 ACRES. THE TOTAL AREA OF THE PRIVATE AREAS IS 674.25 ACRES.

2. THE LOTS ARE BOUNDARY SURVEYED AND THE BOUNDARIES ARE SHOWN BY DASHED LINES. THE BEARINGS AND DISTANCES OF THE BOUNDARIES ARE SHOWN BY SOLID LINES.

3. THE COMMON AREAS ARE BOUNDARY SURVEYED AND THE BOUNDARIES ARE SHOWN BY DASHED LINES. THE BEARINGS AND DISTANCES OF THE BOUNDARIES ARE SHOWN BY SOLID LINES.

4. THE PRIVATE AREAS ARE BOUNDARY SURVEYED AND THE BOUNDARIES ARE SHOWN BY DASHED LINES. THE BEARINGS AND DISTANCES OF THE BOUNDARIES ARE SHOWN BY SOLID LINES.

5. THE SHADES PLACER ARE BOUNDARY SURVEYED AND THE BOUNDARIES ARE SHOWN BY DASHED LINES. THE BEARINGS AND DISTANCES OF THE BOUNDARIES ARE SHOWN BY SOLID LINES.

6. THE PRIVATE ROADS ARE BOUNDARY SURVEYED AND THE BOUNDARIES ARE SHOWN BY DASHED LINES. THE BEARINGS AND DISTANCES OF THE BOUNDARIES ARE SHOWN BY SOLID LINES.

7. THE U.S.F.S. ARE BOUNDARY SURVEYED AND THE BOUNDARIES ARE SHOWN BY DASHED LINES. THE BEARINGS AND DISTANCES OF THE BOUNDARIES ARE SHOWN BY SOLID LINES.

8. THE U.S.F.C. ARE BOUNDARY SURVEYED AND THE BOUNDARIES ARE SHOWN BY DASHED LINES. THE BEARINGS AND DISTANCES OF THE BOUNDARIES ARE SHOWN BY SOLID LINES.

9. THE TOTAL AREA OF THE ESTATE IS 680.00 ACRES. THE TOTAL AREA OF THE COMMON AREAS IS 5.75 ACRES. THE TOTAL AREA OF THE PRIVATE AREAS IS 674.25 ACRES.

10. THE TOTAL AREA OF THE COMMON AREAS IS 5.75 ACRES. THE TOTAL AREA OF THE PRIVATE AREAS IS 674.25 ACRES.

11. THE TOTAL AREA OF THE PRIVATE AREAS IS 674.25 ACRES.

12. THE TOTAL AREA OF THE PRIVATE AREAS IS 674.25 ACRES.

13. THE TOTAL AREA OF THE PRIVATE AREAS IS 674.25 ACRES.

14. THE TOTAL AREA OF THE PRIVATE AREAS IS 674.25 ACRES.

15. THE TOTAL AREA OF THE PRIVATE AREAS IS 674.25 ACRES.

16. THE TOTAL AREA OF THE PRIVATE AREAS IS 674.25 ACRES.

17. THE TOTAL AREA OF THE PRIVATE AREAS IS 674.25 ACRES.

18. THE TOTAL AREA OF THE PRIVATE AREAS IS 674.25 ACRES.

