



## PDF Merger – Ducont Systems

---

Version 1.0

## Table of Contents

<b>1. Introduction.....</b>	<b>3</b>
1.1 Overview.....	3
1.2 Common Use cases .....	8
<b>2. Requirements &amp; Prerequisites.....</b>	<b>9</b>
2.1 System Requirements.....	9
2.2 Prerequisites.....	9
<b>3. Getting Started.....</b>	<b>10</b>
3.1 Skill Matrix .....	10
3.2 Installation Hierarchy .....	10
3.3 Quick Start.....	11
<b>4. Logs.....</b>	<b>12</b>
<b>Appendix A: Record of Change .....</b>	<b>14</b>
<b>Appendix B: Acronyms.....</b>	<b>15</b>

## Introduction

This document contains all the information for the user to make full use of the Bot. This manual includes a description of the functions and capabilities and step-by-step procedures for setup & configuration of the Bot.

### 1.1 Overview

This Bot consolidates all the PDF files inside a Folder in a Single PDF File.

- ✓ Appends All Pages
- ✓ Appends from Specified Page Number

### Detailed Steps are as follows:

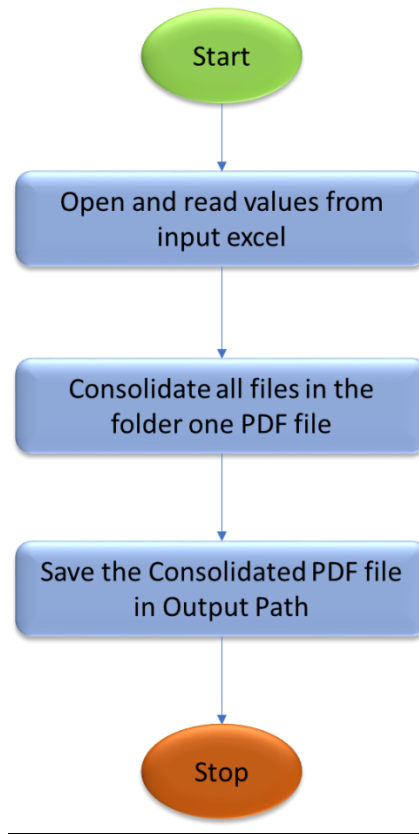
Read data from folder containing 'n' number of PDF files with same format to one Single PDF, e.g. Folder with Multiple PDF files say "sample1.pdf, sample2.pdf, sample3.pdf" to Single Output pdf Files.

#### ✓ **With Specific Page Number & All Pages**

This condition requires little input from the User

- **Folder Path:** Folder containing multiple PDF Files which needs to be merged.
- **Output File Name:** The name in which the output file should be created & saved.
- **Bot will ask you to Select Yes/No regarding the way you need to append the PDF Files?**
- **If "Yes" (Page Number):** Bot reads the data in the Specific Range of Pages. So, the bot will go to the mentioned **Page Number** in each PDF file in the folder & append that data in the Output PDF. In this scenario, you need to enter **the Page Number**.
- **If "No":** Bot will take **All the Pages** in the PDF files & append that data in the output PDF.

Once the bot gets all the above information, it will fetch all the data from the files in the folder and Merge it in to Single Output PDF File.



## Input and Output Examples:

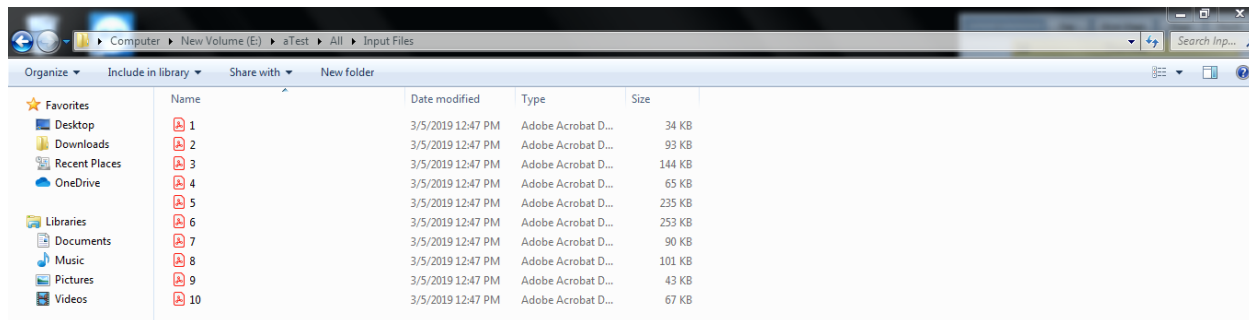
Go to the Input Folder in the Downloaded Task inside Bot Store folder & Open the “Input Excel.xlsx” File.

- ✓ In the Input Excel File,
  - Enter the *Folder Containing Excel path* in cell ‘**B2**’
  - Enter the *Output Folder Path* in the Cell ‘**B3**’
  - Enter the *Output Excel Name* in cell ‘**B4**’
  - Enter “**Yes**” or “**No**” in Cell ‘**B5**’  
(Do You Have a Specific Range of Pages Where You need to merge the Data from?)
  - If “**Yes**”, Please Enter the *sheet Name* in Cell ‘**B6**’
  - If “**No**”, Don’t Enter any data in cell ‘**B6**’

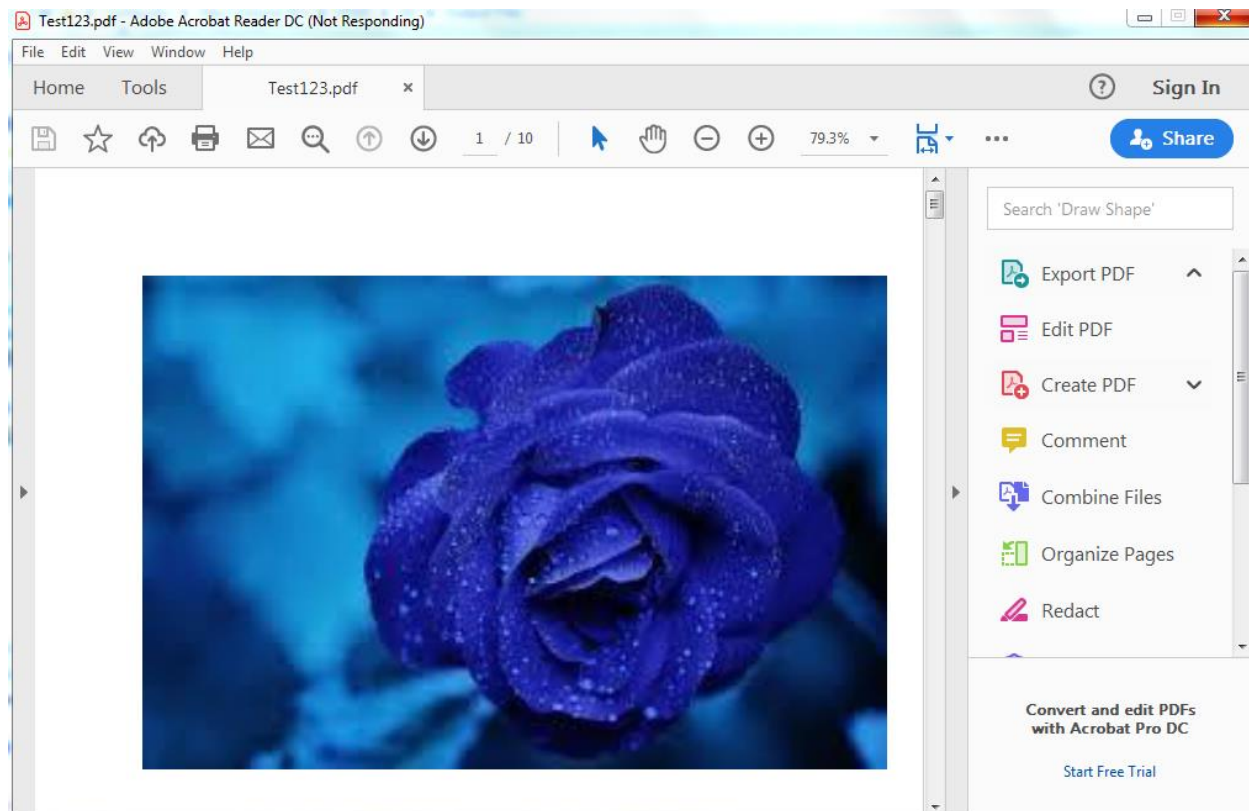
	A	B	C	D
1		PDF Merger - Ducont Systems		
2	Input Folder Path	D:\aTest\All\input Files	Please Enter the Input Folder Path containing PDF files	
3	Output Folder Path	D:\aTest\All\Output Files	Please Enter the Output Folder path	
4	Output File Name	Test123	Please Enter the Output File Name	
5	Append Data From All Pages(Yes) or Particular Range(No)	No	Please Enter (Yes) if you want AppendAll Pages/ (No) If You want to Append the Data from a Particular range of pages <b>in the Drop Down</b>	
6	Range of Page No. ( e.g. 1,3,5-12)		Enter the Page Number	
7				
8				
9				

- ✓ **Output Folder** is the folder where the output File needs to be created.
- ✓ **Output File name** cannot be a *repeated file name* in output folder path.
- ✓ If you choose a **Specific range of Pages**, the bot will go to the desired pages in Each File in the Folder & start appending the data in a Single Output PDF File.
- ✓ If you choose **All the Pages**, the bot will append the data from all the Page & start appending the data in a single Output PDF File.

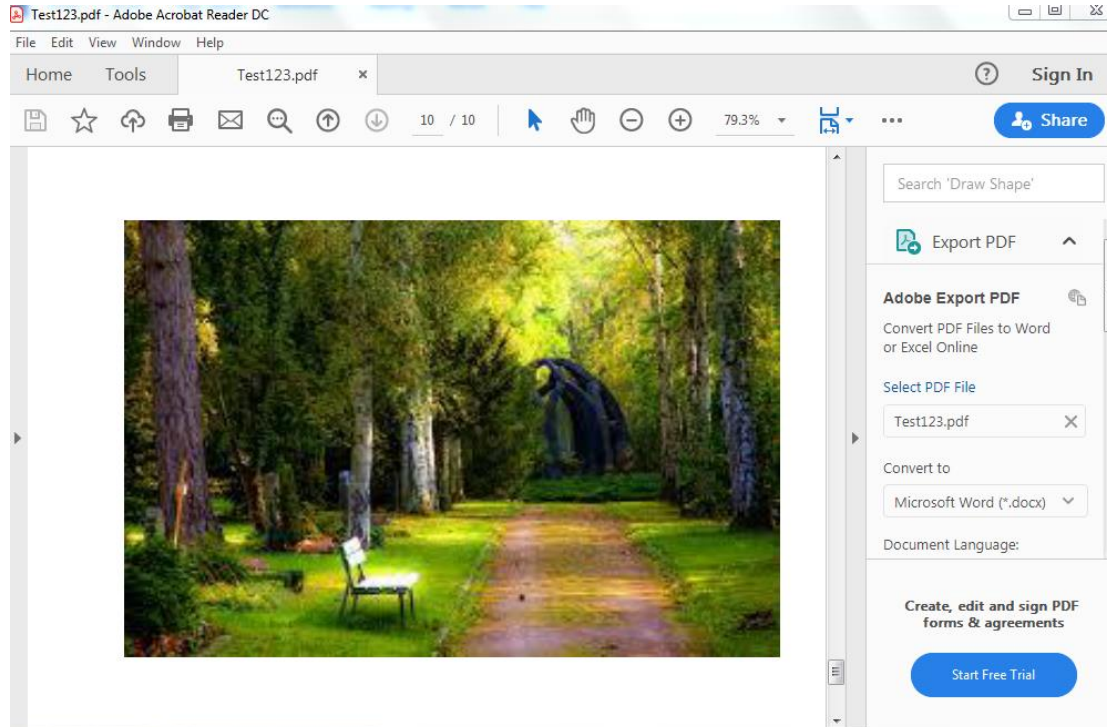
### Input Folder:



### Output PDF:



It appends till the Last File inside the Folder in a Single PDF file.  
Last PDF file inside folder appended in a single PDF file.



## **1.2 Common Use Case:**

- ✓ Merging Invoice copy of a Particular Vendors in a Single PDF Till date
- ✓ Merging Yearly report from a folder containing report based on month or week.
- ✓ Merging any information collected from different source into one file for data validation, reporting, etc.

## **2. Requirements and Prerequisites:**

### **2.1 System Requirement:**

For PC /Laptop /Server, where the Bot needs to run:

- ✓ RAM – 8 GB or Higher
- ✓ Processor - Intel Core i5 or Higher and Equivalent for any other OS
- ✓ Hard Disk – Up to 2 GB of overall free space in the AA client installation drive.

### **2.2 Prerequisites:**

- **Software Required:**
  - ✓ AA Enterprise Client 11.3.4 and higher
  - ✓ AA Enterprise Control Room 11.3.4 and higher
  - ✓ Microsoft Office
  
- **Accounts / License Needed:**
  - ✓ AA Enterprise License



### 3. Getting Started :

#### 3.1 Skill Matric:

Below is an overview of how the task bots and metabots map to these skills:

Skill	Task Files	MetaBot Files
Merge PDF Files inside a Folder to a Single Output PDF file. <ul style="list-style-type: none"> <li>➤ Specific Range of Pages</li> <li>➤ All Pages</li> </ul>	PDF Merger - Ducont System.atmx	No MetaBot

#### 3.2 Installation Hierarchy:

Once the bot is downloaded and installed, the installer creates the files in the folder structure as shown below.

<p>&lt;AA Application Path&gt;</p> <p><b>1. My Task</b></p> <p><b>1.1 Bot Store</b></p> <ul style="list-style-type: none"> <li>➤ <b>Error Folder</b> <ul style="list-style-type: none"> <li>✓ Logs:               <ul style="list-style-type: none"> <li>a. PDF Merge.txt</li> <li>b. PDF Merge.png</li> </ul> </li> <li>✓ Snapshot:</li> </ul> </li> <li>➤ <b>Input Folder</b> <ul style="list-style-type: none"> <li>✓ Input Excel.xlsx</li> </ul> </li> <li>➤ <b>My Tasks</b> <ul style="list-style-type: none"> <li>✓ PDF Merger - Ducont System.atmx</li> </ul> </li> </ul>	<p>&lt;AA <i>Application Path</i>&gt; is the location where AA files are stored on your machine</p> <p><b>1.My Tasks</b></p> <p>My Task Folder is the default directory where Bot Files are saved.</p> <p><b>1.1 Bot Store</b></p> <p>Bot Store Folder contains the Bot Name Folder which the installer creates while installation of the Bot.</p> <ul style="list-style-type: none"> <li>➤ <b>Error folder</b> is where logs and snapshots of screens will be placed if something goes wrong with the bot during execution</li> <li>➤ <b>Input Folder</b> is where the input files that the bot needs for execution of the use case is saved           <ul style="list-style-type: none"> <li>➤ <b>My Tasks</b> folder contains all the Developed Platform Source Code</li> </ul> </li> </ul>
--	--

### 3.3 Quick Start

Please check if you have entered the Input for the “Yes” – **Specific Range of Pages** or “No” – **All Pages** in the *Input Excel.xlsx* & make sure you entered all the Input details required, then save the excel.

#### Set Up:

No Set Up required for executing this task if you have a Microsoft Excel. You can enter the Input in the *Input Excel.xlsx* file & run the bot.

Things to Follow Entering Input in Excel File:

- Never Use '\' at the end of any Folder path.
- Please Read the Given data in description carefully & Append the Data

#### **Input Variables:**

Input Variable	Type	Mandatory	Purpose	Example Input
vFolderPath	Text	Yes	Folder path of Folder Containing PDF files	<AAapplicationpath>\Automation Anywhere\My Docs\ExcelFolder
vOP_Folder	Text	Yes	Output Folder Path	<AAapplicationpath>\Automation Anywhere\My Docs\Output
vOP_Filename	Text	Yes	Output File name	Test123
vRange	Text	Yes	If You have a Specific Range of pages to Append the data 'Yes' (or) 'No' if you want to Append All Pages	'Yes' or 'No'
vPageNumber	Text	No	If 'Yes', Enter Page Number	Page Number

## **4. Log:**

In case of Errors, Error Logs & Screenshots are generated within Error Folder

- My Task
  - Bot Store
    - Bot name
      - Error Folder
        - Logs (Folder)
          - a. PDF Merge.txt
            - Snapshot (Folder)
              - PDF Merge.png

### **Error Log Information:**

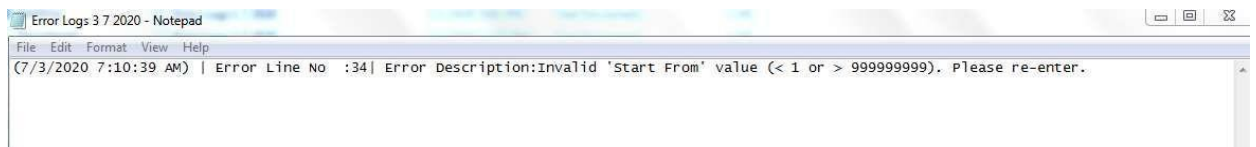
- ✓ Task Number
- ✓ Error line Number
- ✓ Error Description

## Error Log Examples:

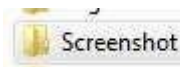
### 1. Log Example



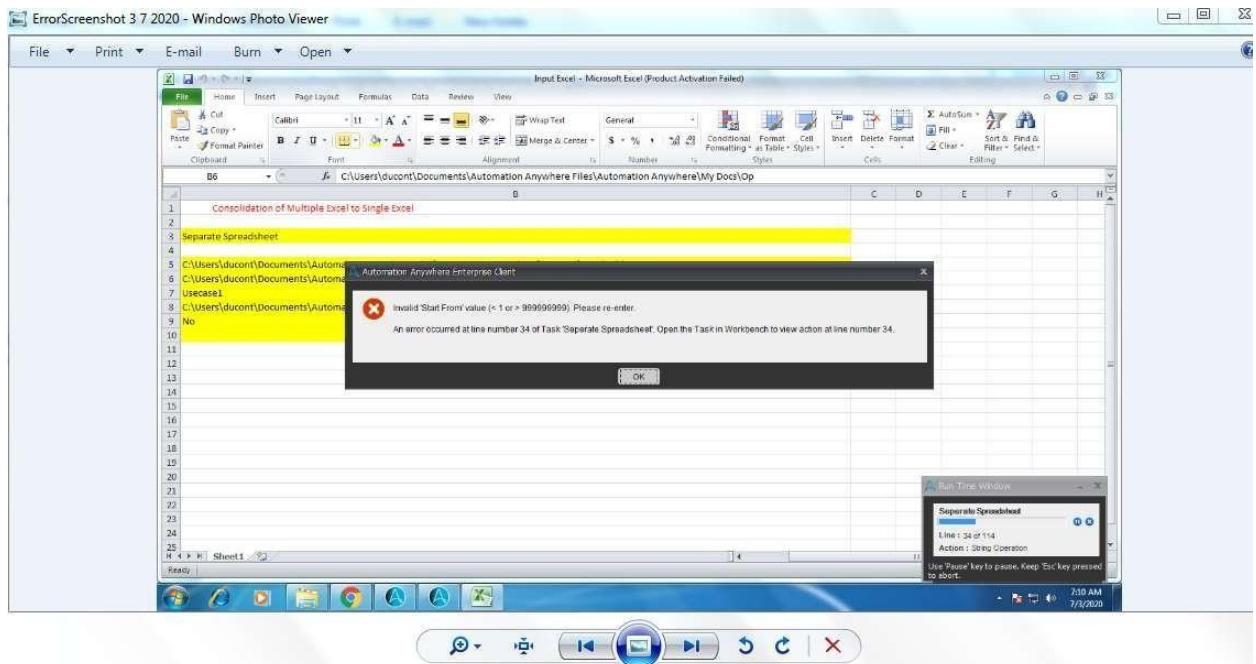
Is the place where the Error Log data.



### 2. Screen Shot:



Is the place where the Screenshot of the Error.



## Appendix A: – Record of Changes

No	Version No.	Date of Change	Author	Notes
1.	1.0	17-07-2020	Lakshmi Narayanan	

## Appendix B: Acronym

No.	Acronym	Description
1.	AA	Automation Anywhere
2.	PC	Personal Computer
3.	RAM	Random Access Memory