



## Analyze Sentiment from Text

### Readme

---

Version1

05/02/2020

# Table of Contents

<b>1. Introduction .....</b>	<b>3</b>
1.1 Overview.....	3
1.2 Common Use cases .....	3
<b>2. Requirements &amp; Prerequisites .....</b>	<b>4</b>
2.1 System Requirements.....	4
2.2 Prerequisites .....	4
2.3 Security Measures.....	4
<b>3. Getting Started .....</b>	<b>5</b>
3.1 Skill Matrix .....	5
3.2 Installation Hierarchy .....	5
3.3 Quick Start .....	6
3.3.1 Setup.....	6
3.3.2 Configuration .....	6
<b>4. Logs .....</b>	<b>8</b>
<b>5 Troubleshooting &amp; Support .....</b>	<b>9</b>
5.1 Support.....	9
<b>Appendix A: Record of Changes .....</b>	<b>10</b>
<b>Appendix B: Acronyms .....</b>	<b>11</b>
<b>Appendix C: References.....</b>	<b>12</b>

# 1. Introduction

This document contains all essential information for the user to make full use of the bot Analyze Sentiment from Text (Google NLP) This manual includes a description of the functions and capabilities and step-by-step procedures for setup & configuration of the Bot.

## 1.1 Overview

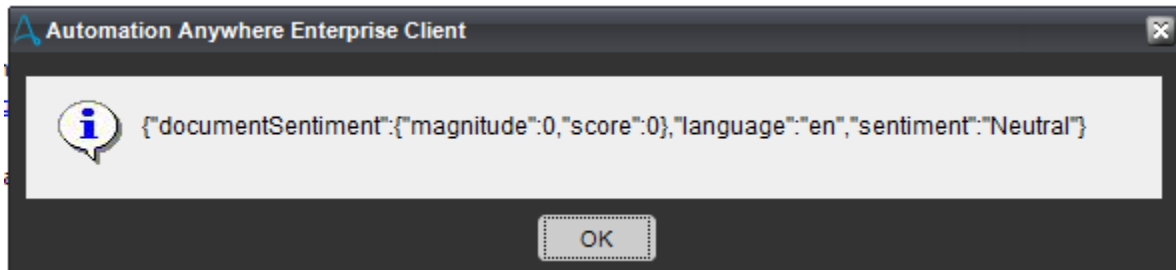
Google natural language processing (NLP) service that uses machine learning to find insights and relationships in text. Predikly's Google NLP bot can help discover the meaning and relationships in text from customer support incidents, product reviews, social media feeds, news articles, documents, and other sources.

This bot is designed to perform Natural Language Processing using Cloud Natural Language API by simply plugging this bot in existing or new task. Derive insights from unstructured text using Google machine learning. This Bot uses Google Cloud Natural Language API. Extract tokens and sentences, identify parts of speech (PoS), and create dependency parse trees for each sentence. Understand the overall sentiment expressed in a block of text.

**Input:**

I don't need a friend who changes when i change and who nods when i nod; my shadow does that better

**Output:**



## 1.2 Common Use cases

Google Cloud Natural Language reveals the structure and meaning of text both through powerful pre-trained machine learning models in an easy to use REST API. Extract actionable insights on product reception or user experience from email, chat, or social media by using sentiment analysis.

---

## 2. Requirements & Prerequisites

---

### 2.1 System Requirements



For the PC or server where the bot needs to run:

- RAM: 8GB or higher
- PROCESSOR: Intel Core i5 or higher and equivalent for any other OS
- Hard Disk Up to 2GB of overall free space in the AA Client installation drive.

### 2.2 Prerequisites

- Software's needed -
  - A. AA Enterprise Client 11.x
  - B. AA Enterprise Control Room 11.x
  - C. Microsoft Web API - API development

### 2.3 Security Measures

- Authentication and Authorization in Web API
- Bot uses GoogleLicense to authenticate the bot user.
- Secure a Web API with Individual Accounts in Web API 2.2
- External Authentication Services with Web API (C#)
- Preventing Cross-Site Request Forgery (CSRF) Attacks in Web API
- Enabling Cross-Origin Requests in Web API 2
- Authentication Filters in Web API 2
- Basic Authentication in Web API
- Forms Authentication in Web API
- Integrated Windows Authentication
- Working with SSL

### 3. Getting Started

#### 3.1 Skill Matrix

Skill	Task Files	MetaBot Files
It Analyze sentiments from the input texts.	Analyze sentiment from text-Predikly.atmx	Analyzesentimentfromtext-Predikly.mbot

#### 3.2 Installation Hierarchy



- Download the bot from Bot Store.
- Unzip the zip archive.
- For **first time users**, create “**Bot Store**” folder under **<AA Directory>/My MetaBots** (*on your local disk*).
- Copy folder
- “**Analyze sentiment from text**” to above created Bot Store folder inside **<AADirectory>/My Tasks** in Automation Anywhere folder on your local disk.

Move the “**Analyzesentimentfromtext-Predikly.mbot**” file from (unzipped) **Analyze sentiment from text-Predikly /My MetaBots** to **<AA Directory>/My MetaBots/** in Automation Anywhere folder on your local disk.

### 3.3 Quick Start



#### 3.3.1 Setup

<AA Directory>

- My Tasks
  - Bot Store
    - Analyze sentiment from text-Predikly
      - My Tasks
        - Analyze sentiment from text-Predikly.atmx
      - Error Folder
        - Logs(Folder)
          - Error LogsMonth-Day-Year.txt
        - Snapshots(Folder)
          - Error SnapMonth-Day-Year-Hour-Minute-Second-Millisecond.png
      - My Metabots
        - Analyzesentimentfromtext-Predikly.mbot

#### 3.3.2 Configuration

<i>INPUT VARIABLES: Input Variables to be mentioned in this Table</i>				
<i>Variable Name</i>	<i>Type</i>	<i>Mandatory</i>	<i>Purpose</i>	<i>Example Input</i>
vInputText	string	Yes	This Metabot requires text string for natural language processing (NLP) service. You can assign the text string to vInputText as given in example Task Bot.	C:\Users\Admin\Documents\Automation Anywhere Files\Automation Anywhere\My Tasks\Bot Store\ Analyze sentiment from text\Input Files\download.png
vAccessCode	String	Yes	This variable provides Access Code	*
vApiKey	String	Yes	This variable provides Api Key for google.	*

For External File –

<i>OUTPUT VARIABLES: Output Variables to be mentioned in this Table.</i>				
<i>Variable Name</i>	<i>Type</i>	<i>Mandatory</i>	<i>Purpose</i>	<i>Example Output</i>
vError	string	Yes	This output variable consists of Error Message returned from the Utility if found anything else success if process is completed.	*
vOutput	string	Yes	This output variable derives insights from input string like sentiments, location, and language.	*
vAccessCodeResponse	String	Yes	This output variable consists of access code output.	*

---

## 4. Logs

---



### Error Handling

In case of Errors, Error Logs & Screenshots are generated within Error Folder.

- Each Bot folder contains the below hierarchy.
  - o Error Folder
    - Logs
      - ErrorLogsMonth-Day-Year.txt:  
In case of any error, this file logs error message along with timestamp
    - Snapshots
      - Error SnapMonth-Day-Year-Hour-Minute-Second-Millisecond.png: In case of any error, this file captures screenshot of error.

Task Status of bot is set to failed in case of error.



---

## 5 Troubleshooting & Support

---

### 5.1 Support



[prediklybots@predikly.com](mailto:prediklybots@predikly.com)

---

## Appendix A: Record of Changes

No.	Version Number	Date of Change	Author	Notes
1	v1	05/02/2020	Predikly	

## Appendix B: Acronyms

No.	Acronym	Description
1	NLP	Natural Language Processing
2	PoS	Parts of Speech

## Appendix C: References

No.	Topic	Reference Link
1	The Natural Language Processing (NLP) service used	<a href="https://cloud.google.com/natural-language/">https://cloud.google.com/natural-language/</a>
2	API development	<a href="https://dotnet.microsoft.com/apps/aspnet/apis">https://dotnet.microsoft.com/apps/aspnet/apis</a>