



JD Edwards BOM Change Request

Readme

Version 1.0

30/06/2020

Table of Contents

1. Introduction	3
1.1 Overview.....	3
1.2 Common Use cases.....	5
2. Requirements & Prerequisites	6
2.1 System Requirements.....	6
2.1.1 6	
2.1.2 Client	6
2.1.3 Browser Selection.....	7
2.2 Prerequisites	8
2.3 Security Measures	8
3. Getting Started	9
3.1 Skill Matrix	9
3.2 Installation Hierarchy	10
3.3 Quick Start.....	11
3.3.1 Setup	11
3.3.2 Configuration	11
3.3.3 Variable Breakdown.....	14
4. Reports	23
5. Logs	24
6. Troubleshooting & Support	25
6.1 Support	25
6.2 FAQs.....	25
Appendix A: Record of Changes	29
Appendix B: Acronyms	30
Appendix C: References	31

1. Introduction

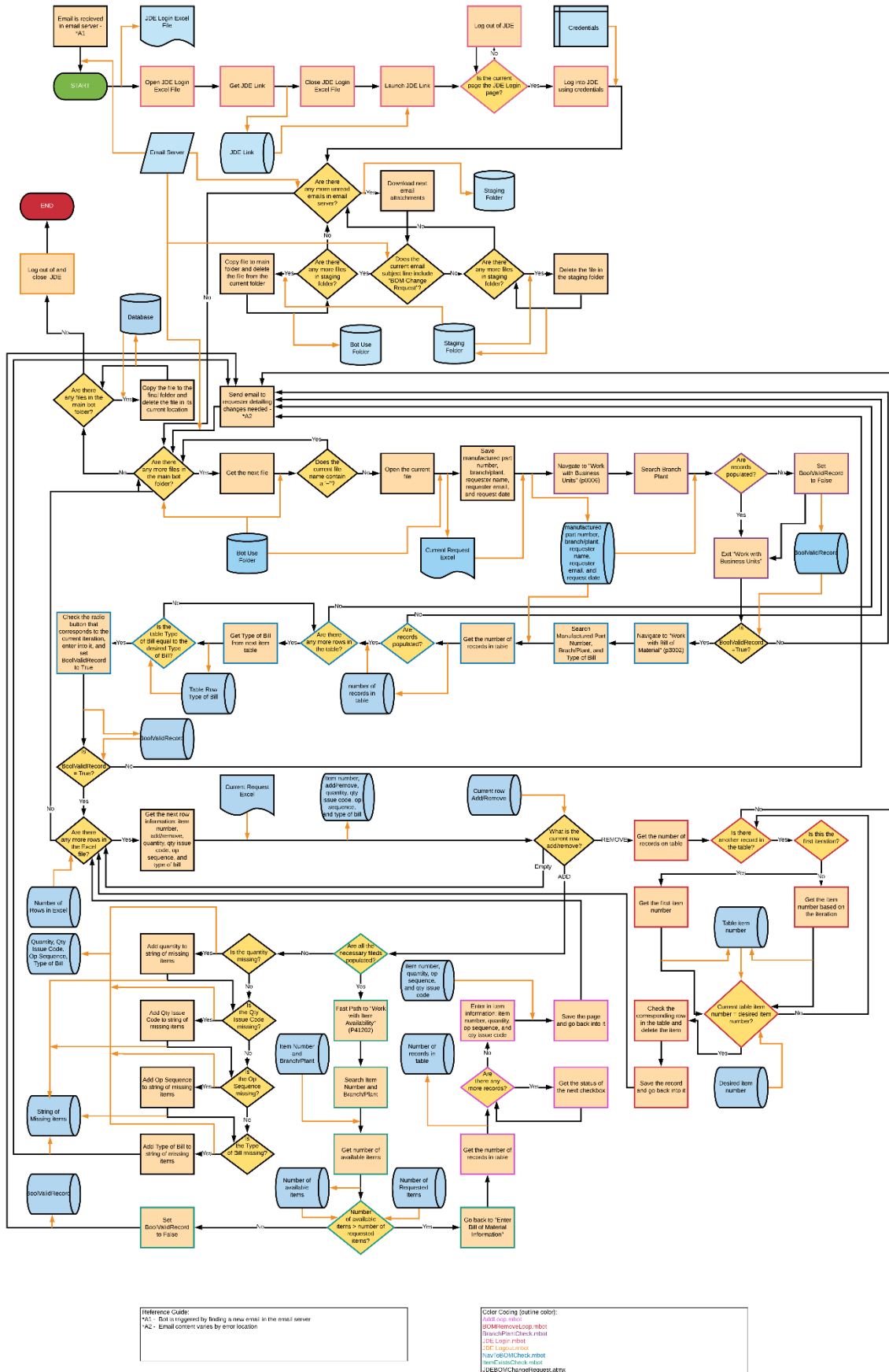
This document contains all essential information for the user to make full use of the Bot or Digital worker. This manual includes a description of the functions and capabilities and step-by-step procedures for setup & configuration of the Bot.

- **Functionality:** Adds or removes items from a BOM in JD Edwards.
- **Capabilities:** This bot is intended to run as an unattended bot.
- Step by step procedures are found throughout the document regarding bot configuration and process steps

1.1 Overview

The JD Edwards: BOM Change Request

1. *Email is received by monitored email server*
2. *Log into JDE*
3. *Loop through email server and save valid files*
4. *Begin loop through excel documents*
5. *Get the Manufactured Part Number, Branch/Plant, Requester Name, Request Date, and Requester Email*
6. *Check to make sure the branch/plant is valid*
7. *Navigate to BOM*
8. *Begin loop of excel file table*
9. *Get Item Number, Add/Remove, Quantity, Qty Issue Code, Op Sequence, Type of Bill*
10. *If add/remove is add:*
 - a. *Check that all fields are populated*
 - b. *Add item to list*
11. *If add/remove is remove:*
 - a. *Remove item from loop*
12. *End of Excel Table Loop*
13. *Send email to requester and close the excel file*
14. *End of Document Loop*
15. *Loop through bot file folder and move all files to archive folder*
16. *Log out of JD Edwards*



1.2 Common Use cases

This bot is used to add or remove items from a Bill of Material.

2. Requirements & Prerequisites

2.1 System Requirements

2.1.1

Device	Processor	RAM	Storage (Free Space)	Network
Enterprise Control Room Servers	8 Core Intel Xeon Processor	16 GB	500 GB	1 GbE
Enterprise Control Room on Amazon Web Services EC-2	8 Core Intel Xeon Processor	16 GB	500 GB	1 GbE
Enterprise Control Room on Google Cloud Platform	8 Core Intel Xeon Processor	16 GB	500 GB	1 GbE
Enterprise Control Room on Microsoft Azure	8 Core Intel Xeon Processor	16 GB	500 GB	1 GbE

2.1.2 Client

Component Server	Processor	RAM	Storage (Free Disk Space)	Network
Enterprise client on hardware machines	3.5 GHz plus with 4 multi-cores or higher	8 GB or more per machine	8 GB	1 GbE
Enterprise client on virtual machines	4 virtual CPU (vCPU) or Logical Processor with 1.2 to 1.5 GHz speed per vCPU	8 GB or more per machine	8 GB	1 GbE

Virtual machine options:

- Citrix XenDesktop¹
- VMware Horizon Client version 4.8.0 or later
- Windows multi-user terminal servers

Enterprise client on cloud service.	U 4 CPU per Automaton Anywhere Instance	8 GB per Automation Anywhere Instance	8 GB	1GbE
--	---	---------------------------------------	------	------

Cloud provider options:

- Amazon Web Services EC2
- Google Cloud Platform
- Microsoft Azure

Additional users on a multi-user system.	2 CPU per additional user	4 GB per additional user	No additional storage needed	No additional network needed
---	---------------------------	--------------------------	------------------------------	------------------------------

Bot Creator and Bot Runner	3.5 GHz plus with 4 multi-cores or higher	8 GB or more per machine	Add 100 through 150 KB per Automation Anywhere script Add 40 through 50 GB per long-term MetaBot Project	1 GbE
-----------------------------------	---	--------------------------	---	-------

2.1.3 Browser Selection

Browser	Browser Version
Internet Explorer	10 or later

2.2 Prerequisites

Software:

- Microsoft Outlook installed on the bot runner machine
 - Email server is configured in Automation Anywhere Client
- JD Edwards Platform Access
- Microsoft Excel installed on the bot runner machine
- Internet Explorer browser is installed on bot runner machine

Licenses:

- AA Enterprise 11.3.x.x license
- JD Edwards user license
- Microsoft Office suite
 - Outlook

2.3 Security Measures

Connect to VPN that supports JD Edwards (if applicable)

3. Getting Started

3.1 Skill Matrix

BOMJDELogin.mbot	JDEBOMChangeRequest.atmx	I/O
vFilteredFolderPath	vFilteredFolderPath	Output
vArchiveFolderPath	vArchiveFolderPath	Output
vEmailFolderPath	vEmailFolderPath	Output

BranchPlantCheck.mbot	JDEBOMChangeRequest.atmx	I/O
vStrBranchPlant	vStrBranchPlant	Input
vValidBranchPlant	vBoolValidRecord	Output

NavToBOMCheck.mbot	JDEBOMChangeRequest.atmx	I/O
vStrBranchPlant	vStrBranchPlant	Input
vIntManufacturedPartNumber	vIntManufacturedPartNumber	Input
vBoolValidRecord	vBoolValidRecord	Output

ItemExistsCheck.mbot	JDEBOMChangeRequest.atmx	I/O
vStrBranchPlant	vStrBranchPlant	Input
vIntQuantity	vIntQuantity	Input
vIntCurrItemNumber	vIntCurrItemNumber	Input
vBoolValidRecord	vBoolValidRecord	Output

AddLoop.mbot	JDEBOMChangeRequest.atmx	I/O
vStrItemNumber	vStrItemNumber	Input

vIntQuantity	vIntQuantity	Input
vStrOperSequence	vStrOpSequence	Input
vStrIssueCode	vStrIssueCode	Input

BOMRemoveLoop.mbot	JDEBOMChangeRequest.atmx	I/O
vIntTargetNumber	vIntCurrItemNumber	Input
vBoolRecordDeleted	vBoolRecordDeleted	Input

3.2 Installation Hierarchy

- Download the bot from Bot Store
- Double click on <Bot Name>.msl and follow the installation instructions
 - For first time user, the “Bot Store” folder is created under <AA Directory>/My Tasks (on your local disk).
 - Installer creates the following folder structure with content under the <AA Directory>

Folder Structure	Description
<pre> <AA Application Path> • My Tasks ○ Bot Store ▪ JDEBOMChangeRequest (folder) • My Tasks ○ JDEBOMChangeRequest.atmx • Error Folder ○ Logs (Folder) ▪ Error Logs Month-Day-Year.txt ○ Snapshots (Folder) ▪ Error Snap Month-Day-Year.png • Input Folder ○ BOM JDE Login.xls ○ BOM Change Request.xlsx • My Metabots ○ BOMJDELogin.mbot </pre>	<p><AA Application Path> is the location where AA files are stored on your machine.</p> <p>My Tasks is the default directory where Bot files are stored.</p> <p>Bot Store contains the Bot Name Folder which the installer creates while installing your Bot.</p> <p>JDEBOMChangeRequest is a folder that is created by the installer and contains files and folders needed for the bot execution.</p> <p>My Tasks contains the JDEBOMChangeRequest.atmx file which contains the compilation of bots used to</p>

<ul style="list-style-type: none"> ○ <i>BranchPlantCheck.mbot</i> ○ <i>LicenseHelper.mbot</i> ○ <i>NavToBOMCheck.mbot</i> ○ <i>ItemExistsCheck.mbot</i> ○ <i>AddLoop.mbot</i> ○ <i>BOMRemoveLoop.mbot</i> ○ <i>JDELogout.mbot</i> 	<p><i>perform the currency conversion and record updating.</i></p> <p>Error Folder is where logs and snapshots of screens will be placed if something goes wrong with the bot during execution.</p> <p>Input Folder is where the input files that the bot needs for execution of the use case is saved.</p> <ul style="list-style-type: none"> • BOM JDE Login.xls is where the JDE Link and other material are contained • BOM Change Request is a template for the request form <p>My Metabots folder contains the Developed Metabots needed for bot execution</p>
--	---

○

3.3 Quick Start

3.3.1 Setup

To setup the bot to run, you need to designate the required items in the excel file and set up the credentials for JD Edwards login. The required edits are outlined in the configuration section; 3.3.2

3.3.2 Configuration

Create a locker named “JDE Login” with a user who has the role of locker_admin. Create two credentials in the credentials tab named “JDE Username” and “JDE Password” with the username and password for JD Edwards, respectively. Repeat steps for Email configuration, based on table below:

<i>Locker Name</i>	<i>Credentials Name</i>	<i>Attribute Name</i>	<i>Value</i>
JDE Login	<i>JDE Username</i>	<i>Username</i>	<i>Username for JD Edwards</i>
JDE Login	<i>JDE Password</i>	<i>Password</i>	<i>Password for JD Edwards</i>
Email Configuration	<i>Email</i>	<i>Email</i>	<i>Email username</i>

<i>Configuration</i>			
Email Configuration	<i>Email Configuration</i>	<i>Host</i>	<i>Email Server Host</i>
Email Configuration	<i>Email configuration</i>	<i>Password</i>	<i>Password for Email account</i>

- INPUT VARIABLES:** Input Variables to be mentioned in this Table are to be entered into BOMChangeRequest.xlsx and BOM JDE Login.xls for bot to run

<i>Variable Name</i>	<i>Type</i>	<i>Required</i>	<i>Purpose</i>	<i>Excel File</i>	<i>Example Input</i>
vJDELink	<i>String</i>	<i>Yes</i>	<i>Link to JDE platform</i>	<i>BOM JDE Login.xls</i>	<i>www.jde.com</i>
vArchiveFolderPath	<i>String</i>	<i>Yes</i>	<i>Post completion file folder</i>	<i>BOM JDE Login.xls</i>	<i>C:/Example</i>
vEmailFolderPath	<i>String</i>	<i>Yes</i>	<i>Prefilter folder</i>	<i>BOM JDE Login.xls</i>	<i>C:/Example</i>
vFilteredFolderPath	<i>String</i>	<i>Yes</i>	<i>Filtered folder</i>	<i>BOM JDE Login.xls</i>	<i>C:/Example</i>
vIntCurrItemNumber	<i>Int</i>	<i>Yes</i>	<i>Item Number in table</i>	<i>BOMChangeRequest.xlsx</i>	<i>5</i>
vIntManufacturedPartNumber	<i>Int</i>	<i>Yes</i>	<i>BOM Part Number</i>	<i>BOMChangeRequest.xlsx</i>	<i>6</i>
vStrRequesterName	<i>String</i>	<i>Yes</i>	<i>Requester Name</i>	<i>BOMChangeRequest.xlsx</i>	<i>John Doe</i>
vStrRequesterEmail	<i>String</i>	<i>Yes</i>	<i>Requester Email</i>	<i>BOMChangeRequest.xlsx</i>	<i>Example@gmail.com</i>
vStrRequestDate	<i>String</i>	<i>Yes</i>	<i>Request Date</i>	<i>BOMChangeRequest.xlsx</i>	<i>05/06/2020</i>
vStrAddRemove	<i>String</i>	<i>Yes</i>	<i>Add or Remove</i>	<i>BOMChangeRequest.xlsx</i>	<i>ADD</i>
vIntQuantity	<i>Int</i>	<i>Yes</i>	<i>Number of items to add</i>	<i>BOMChangeRequest.xlsx</i>	<i>6</i>
vStrQtyIssueCode	<i>String</i>	<i>Yes</i>	<i>Qty Issue Code</i>	<i>BOMChangeRequest.xlsx</i>	<i>1</i>
vStrOpSequence	<i>String</i>	<i>Yes</i>	<i>Op Sequence</i>	<i>BOMChangeRequest.xlsx</i>	<i>30</i>
vStrTypeOfBill	<i>String</i>	<i>Yes</i>	<i>Type of Bill</i>	<i>BOMChangeRequest.xlsx</i>	<i>M</i>

- BOM JDE Login.xls
 - Contains the JDE Link and folder paths that the bot is to be run on
 - Will impact other bots that use the JDELogin.mbot
 - Example of JDEBotLoginInfo.xls:

	A	B	C	D	E
1	Variables Needed	User Provided	Bot Variable Name	Notes	
2	JDE Link		\$vJDELink\$	JDE Link	
3	Email folder path		\$vEmailFolderPath\$	First folder	
4	Filtered folder path		\$vFilteredFolderPat	Second Folder	
5	Archive folder path		\$vArchiveFilderPath	Third Folder	
6					

- BOM Change Request.xlsx
 - Contains all necessary changes to BOM
 - Example of BOM Change Request.xlsx:

BOM - Change Request Form

Manufactured Part Number

Branch Plant

Requester	
Name	
Email	
Date	

Change Request					
Item Number	Add/Remove	Qty	Qty Issue Code*	Op Sequenc	Type of Bill

*If Remove is selected, only the item number is required for that line item.
 **I - Manual Issue; U - Backflush at paypoint; B - At WO completion

Thank you for submitting your request.
 You will receive an email regarding the status within 24 hours

OUTPUT: Confirmation email with initial request attached

3.3.3 Variable Breakdown

<i>Variable Name</i>	<i>Type</i>	<i>Purpose</i>	<i>Example</i>	<i>Location</i>	<i>Taskbot equivalent (metabots only)</i>
Access_Code	<i>Value</i>	Used for license validation	NA	JDEBOMChangeRequest.atmx	
vArchiveFolderPath	<i>String</i>	Folder path for end destination for bot files (post request completion)	C:/Example	JDEBOMChangeRequest.atmx	
vBoolValidRecord	<i>Value</i>	Error Handling	<i>False</i>	JDEBOMChangeRequest.atmx	
vEmailFolderPath	<i>String</i>	File path for first level filtering of files	C:/Example	JDEBOMChangeRequest.atmx	
vFilteredFolderPath	<i>String</i>	File path for folder of filtered files	C:/Example	JDEBOMChangeRequest.atmx	
vIntCurrItemNumber	<i>Integer</i>	Excel row item number	5	JDEBOMChangeRequest.atmx	

vIntFormIterator	Integer	Iterate through excel file	4	JDEBOMChange Request.atmx	
vIntManufacturedPart Number	Integer	BOM Part Number	220	JDEBOMChange Request.atmx	
vIntQuantity	Integer	Quantity of parts to add to BOM	6	JDEBOMChange Request.atmx	
vStrAddFailString	String	List of missing parts for adding an item	Type of Bill, Op Sequence	JDEBOMChange Request.atmx	
vStrAddRemove	String	Excel row add or remove	ADD	JDEBOMChange Request.atmx	
vStrOpSequence	String	Excel row Op Sequence	30	JDEBOMChange Request.atmx	
vStrQtyIssueCode	String	Excel row Qty Issue Code	1	JDEBOMChange Request.atmx	
vStrRequestDate	String	Request date	05/06/2020	JDEBOMChange Request.atmx	
vStrRequesterEmail	String	Email of requester	Example@gmail.com	JDEBOMChange Request.atmx	
vStrRequesterName	String	Name of requester	John Doe	JDEBOMChange Request.atmx	
vStrTypeOfBill	String	Excel Row Type of Bill	M	JDEBOMChange Request.atmx	
vRecordsPopulated	String	True if records	False	BranchPlantCheck.mbot	

		<i>are populated, false if not. Error handling</i>			
vValidBranchPlant	<i>Boolean</i>	<i>True if records are populated, false if not. Error handling</i>	<i>False</i>	BranchPlantCheck.mbot	vBoolValidRecord
vStrBranchPlant	<i>String</i>	BOM Branch Plant	<i>M30</i>	BranchPlantCheck.mbot	<i>vStrBranchPlant</i>
vBoolValidRecord	<i>Value</i>	True if records are populated, false if not. Error handling	<i>False</i>	NavToBOMCheck.mbot	vBoolValidRecord
vIntManufacturedPartNumber	<i>Integer</i>	<i>BOM Part Number</i>	<i>220</i>	NavToBOMCheck.mbot	<i>vIntManufacturedPartNumber</i>
vIntNumRows	<i>Integer</i>	Number of rows in table	<i>2</i>	NavToBOMCheck.mbot	
vIntTableIterator	<i>Integer</i>	<i>Table iterator</i>	<i>6</i>	NavToBOMCheck.mbot	
vStrBranchPlant	<i>String</i>	BOM Branch Plant	<i>M30</i>	NavToBOMCheck.mbot	<i>vStrBranchPlant</i>
vStrClickDOMXPath	<i>String</i>	DOMXPath for the radio button	<i>//div[@id='FormAboveGrid'] /span[20]/table[1]/tbody[1]/</i>	NavToBOMCheck.mbot	

			tr[2]/td[1]/table[1]/tbody[1]/tr[1]/td[1]/table[1]/tbody[1]/tr[2]/td[1]/div[1]/table[1]/tbody[1]/tr[1]/td[2]/table[1]/tbody[1]/tr[(REPLACE)]/td[1]/table[1]/tbody[1]/tr[1]/td[4]/div[1]/a[1]		
vStrClickPath	String	Path for the radio button	70 16 4 1 1 1 1 20 3 1 2 1 1 1 1 1 1 1 2 1 1 2 1 1 1 (REPLACE) 1 1 1 1 4 1 1	NavToBOMCheck.mbot	
vStrCurrTypeBOM	String	Type of Bill in table	//div[@id='FormAboveGrid'] /span[20]/table[1]/tbody[1]/tr[2]/td[1]/table[1]/tbody[1]/tr[1]/td[1]/table[1]/tbody[1]/tr[2]/td[1]/div[1]/table[1]/tbody[1]/tr[1]/td[2]/table[1]/tbody[1]/tr[(REPLACE)]/td[1]/table[1]/tbody[1]/tr[1]/td[4]/div[1]/a[1]	NavToBOMCheck.mbot	
vStrDOMXPath	String	Type of Bill DOMXPath in table	//div[@id='FormAboveGrid'] /span[20]/table[1]/tbody[1]/tr[2]/td[1]/table[1]/tbody[1]/tr[1]/td[1]/table[1]/tbody[1]/	NavToBOMCheck.mbot	



			tr[2]/td[1]/div[1]/table[1]/tbody[1]/tr[1]/td[2]/table[1]/tbody[1]/tr[(REPLACE)]/td[1]/table[1]/tbody[1]/tr[1]/td[4]/div[1]/a[1]		
vStrPath	String	Type of Bill Path in table	70 16 4 1 1 1 1 20 3 1 2 1 1 1 1 1 1 1 2 1 1 2 1 1 1 (REPLACE) 1 1 1 1 4 1 1	NavToBOMCheck.mbot	
vStrTypeOfBill	String	Type of Bill we are searching for	M	NavToBOMCheck.mbot	vStrTypeOfBill
vWindow	Value	Current Active window	JD Edwards - Internet Explorer	NavToBOMCheck.mbot	
vBoolValidRecord	Value	True if records are populated, false if not. Error handling	False	ItemExistsCheck.mbot	vBoolValidRecord
vIntItemNumber	Integer	Current item number	4	ItemExistsCheck.mbot	vIntCurrentItemNumber
vIntNumAvailableItems	Integer	Number of available items	3	ItemExistsCheck.mbot	
vIntNumRecords	Integer	Number of records in table	2	ItemExistsCheck.mbot	
vIntQuantity	Integer	Number of items to check if	6	ItemExistsCheck.mbot	

		are available			
vIterator	Integer	Iterator	5	AddLoop.mbot	
vStrBranchPlant	String	Branch Plant we want to find available items	M30	AddLoop.mbot	vStrBranchPlant
vStrTableBranchPlant	String	Branch Plant on table	M30	AddLoop.mbot	
vIntIterator	Integer	Iterator to go down table	4	AddLoop.mbot	
vIntNumRecords	Integer	Number of records in table	3	AddLoop.mbot	
vIntQuantity	Integer	Number of items to add	5	AddLoop.mbot	vIntQuantity
vIntShortIterator	Integer	Iterator -1 for tab down. There is one more row in the table that is not an item	5	AddLoop.mbot	
vStrDOMXPath	String	DOMXPath for Checkbox (iterate down)	//div[@id='FormAboveGrid'] /span[20]/table[1]/tbody[1]/tr[2]/td[1]/table[1]/tbody[1]/tr[1]/td[1]/table[1]/tbody[1]/tr[2]/td[1]/div[1]/table[1]/tbody[1]/tr[1]/td[2]/table[1]	AddLoop.mbot	

			/tbody[1]/tr[(REPLACE)])/td[1]/table[1]/tbody[1]/tr[1]/td[4]/div[1]/a[1]		
vStrIssueCode	String	Issue Code to add	1	AddLoop.mbot	vStrIssueCode
vStrItemNumber	String	Item number to add	2009	AddLoop.mbot	vIntCurrItemNumber
vStrOperSequence	String	Operation Sequence to add	30	AddLoop.mbot	vStrOpSequence
vStrPath	String	Path for Checkbox (iterate down)	70 16 4 1 1 1 1 20 3 1 2 1 1 1 1 1 1 1 2 1 1 2 1 1 1 (REPLACE) 1 1 1 1 4 1 1	AddLoop.mbot	
vStrStatus	String	Status of checkbox (used to iterate down table)	Checked	AddLoop.mbot	
vWindow	Value	Active window	JD Edwards - Internet Explorer	AddLoop.mbot	
vBoolValidRecord	Value	True if records are found and deleted, false if not. Error handling	False	BOMRemoveLoop.mbot	vBoolValidRecord
vDOMXPath	String	DOMXPath for item number column	//div[@id='FormAboveGrid']/span[20]/table[1]/tbody[1]/tr[2]/td[1]/table[1]/tbody[1]/tr[1]/td[1]/table[1]/tbody[1]/tr[2]/td[1]/div[1]/table[1]/	BOMRemoveLoop.mbot	

			tbody[1]/tr[1]/td[2]/table[1] /tbody[1]/tr[(REPLACE)]/td[1] /table[1]/tbody[1]/tr[1]/td[4]/div[1]/a[1]		
vIntNumRecords	Integer	Number of records in table	5	BOMRemoveLo op.mbot	
vIntTableItemNumber	Integer	Current Item number in table	2009	BOMRemoveLo op.mbot	
vIntTableIterator	Integer	Table iterator	6	BOMRemoveLo op.mbot	
vIntTargetItemNumber	Integer	Target item number	2009	BOMRemoveLo op.mbot	vIntCurrItemNumber
vPath	String	Path for item number column	70 16 4 1 1 1 1 20 3 1 2 1 1 1 1 1 1 1 2 1 1 2 1 1 2 1 1 (REPLACE) 1 1 1 1 4 1 1	BOMRemoveLo op.mbot	
vStrCheckedBoxDOMXPath	String	DOMXPath for Checkbox (iterate down)	//div[@id='FormAboveGrid'] /span[20]/table[1]/tbody[1]/tr[2]/td[1]/table[1]/tbody[1]/tr[1]/td[1]/table[1]/tbody[1]/tr[2]/td[1]/div[1]/table[1]/tbody[1]/tr[1]/td[2]/table[1] /tbody[1]/tr[(REPLACE)]/td[1] /table[1]/tbody[1]/tr[1]/td[4]/div[1]/a[1]	BOMRemoveLo op.mbot	
vStrCheckBoxPath	String	Path for Checkbox (iterate down)	70 16 4 1 1 1 1 20 3 1 2 1 1 1 1 1 1 1 2 1 1 2 1 1 2 1 1	BOMRemoveLo op.mbot	

			{(REPLACE)} 1 1 1 1 4 1 1		
vArchiveFolderPath	String	Folder path for end destination for bot files (post request completion)	C:/Example	BOMJDELogin.mbot	vArchiveFolderPath
vEmailFolderPath	String	Folder path for the first destination of the bot files. Files will be copied to next filtered folder	C:/Example	BOMJDELogin.mbot	vEmailFolderPath
vFilteredFolderPath	String	Folder path for the in use files while the bot is running	C:/Example	BOMJDELogin.mbot	vFilteredFolderPath
vJDELink	String	JDE URL	www.example.com	BOMJDELogin.mbot	

4. Reports

Upon completion the bot will send an email back the requester confirming that the changes were made. This email will include the original attachment send by the requester. Other emails are sent if errors are found in the process.

5. Logs

In case of Errors, Error Logs and Screenshots are generated within Error Folder.

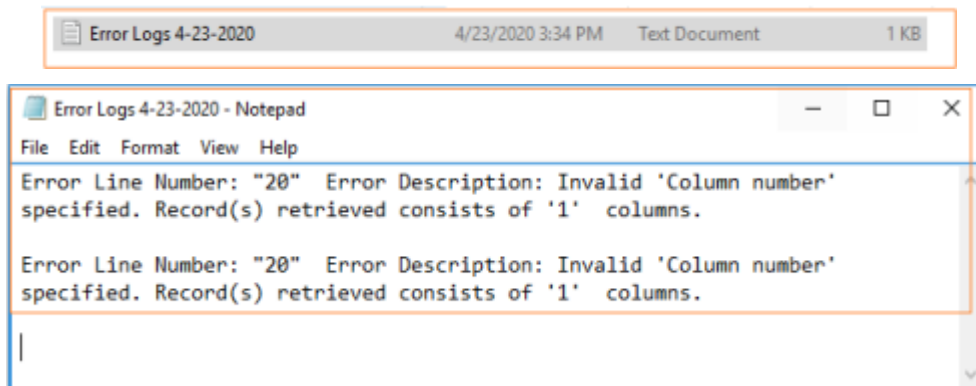
My Tasks

- *Bot Store*
 - *Bot Name*
 - *Error Folder*
 - *Logs (Folder)*
 - *Error Logs Month-Day-Year.txt*
 - *Snapshots (Folder)*
 - *Error Snap Month-Day-Year HourMinSec.png*

Error Logs will contain the below information—

- *Task Name*
- *Error Line Number*
- *Error Description*

- **Generated Timestamp Example of Log File:**



- **Example of Screenshot Generated Error File**



6. Troubleshooting & Support

6.1 Support

For support:

- Email Whitelight Group at WLGsupport@whitelightgrp.com
- Ticket number will be emailed to you within 20 minutes
- Support hours: 8am – 5pm CST; Monday – Friday
- Subject line content: Automation Anywhere – Currency Conversion Rate Issue

6.2 FAQs

How often should I run this bot?

This bot can be run as needed.

Is this an attended or unattended bot?

This is an unattended bot, meaning a user is not present to run the bot.

How is this bot triggered?

The bot is triggered when a new email enters an email server that the bot monitors.

How does the file structure work?

All files in unread email are put into the Email Folder (designated in BOM JDE Login.xlsx). The bot when then check the associated email for a subject line containing “BOM Change Request.” If found, it will copy the file to the filtered, add a timestamp, delete from Email folder. If it is not found, then it is deleted. At the end of the bot when everything has run successfully, the bot will loop through the filtered folder and copy them to the archive folder and delete the files from the filtered folder.

What changes do I have to make to the bot to ensure it will work on my JDE system?

None, the bot should be able to run with default settings.

What version of JDE do I have to be on for this bot to work in my environments?

9.1

What version do I have to have for AAE for it to work?

11.3 or higher

Do I have to have another user license for JDE to login and run the bot?

Yes, it is required to have a separate set of credentials in JDE for the bot to run. This is to ensure proper activity tracking of changes in the JDE platform.

What is the process of downloading and adding this bot to my Control Room?

See 3.3.2 and 3.2.

How do I download and install a bot or Digital Worker from Bot Store?

Browse Bot Store for products. Once you find a product that interests you, click on the “Get Bot” or “Start Free Trial” button to begin the download process.

For Enterprise V11, complete steps are listed below:

1. Download the product, once download of .MSI is complete
2. Right-click on the .MSI file and execute as an Administrator.
3. On the “Welcome to Installation” wizard, click Next to continue.
4. Read and click “I agree to the terms” in the license agreement radio button to accept the agreement.
5. Get/Copy the License key from Bot Store Downloads page or order confirmation email into License Key, click Next to continue.
6. Click Install to begin the installation.
7. Click Finish to complete the installation.

How can I buy products on Bot Store?

Many products have self checkout capabilities, look for the blue “Buy Now” button. For all other products, contact your Automation Anywhere Account Manager or you can email Automation Anywhere at: botstore@automationanywhere.com

I am interested in purchasing a product, what are the system requirements?

For Enterprise V11 you will need to have version 11.3.3 at minimum to run paid bots and Digital Workers.

Do paid listings have a free trial?

Yes, paid listings come with a 30-Day Free Trial. Your free trial Access Code will expire 30 days after the download.

What security verifications were completed for products listed on Bot Store?

All products on Bot Store are verified at Level 1, malware scan. For details about the 4 progressive levels or security designation, please review our [Bot Security Program](#).

I can't run the MSI installer for a bot or Digital Worker I downloaded, what can I do?

For Enterprise V11 To run an Automation Anywhere Bot Store MSI installer, the Windows user must have Administrator privileges to execute the installer on the device. Please contact your company's IT Support Desk or Center of Excellence to check the policy on executing installer files if you do not have the required permissions. Or you can email us at botstore@automationanywhere.com and we can send a Zip file.

I don't see the files after successfully running the .MSI. What should I do?

First, check if the user has Administrator privileges. Once confirmed, you may try again by:

1. Uninstall the bot by going to "Add/Remove Programs"
2. Go to Windows > type CMD
3. Right-click CMD and click on "Run as Administrator"
4. Navigate to the path where the .MSI is located and execute it

Now it should work and display all the files correctly.

I see terms such as License Key and an Access Code, what is the difference?

The License Key is used during the installation process with the MSI installer. The Access Code grants permission to run the product for a defined period of time. You will receive one Access Code for the 30-Day Free Trial and a separate Access Code with the purchase of an annual subscription. Both codes are available to you on your ["My Downloads"](#) page.

How and where do I input the Access Code I received?

For Enterprise V11

When you download a 30-Day Free Trial or make a purchase, you will need to input the Access Code into each of the Task Files that shipped with your bot or Digital Worker. For more detailed instructions, visit [Inputting Your Access Code](#).

How do I request ongoing support for my paid product?

Please contact the vendor for support questions. The vendor contact details can be found on the product detail page or the vendor profile page in Bot Store. Vendor support is available with your purchase of your product.

Appendix A: Record of Changes

Instructions: Provide information on the version number, the date of the version, the author/owner of the version, and a brief description of the reason for creating the revised version.

No.	Version Number	Date of Change	Author	Notes
<i>1</i>	<i>1.0</i>	<i>8/6/2020</i>	<i>Hayden Schultz</i>	<i>Initial creation of document</i>

Appendix B: Acronyms

*Instructions: Provide a list of acronyms and relative description used within the document.
Sequence should be alphabetical*

No.	Acronym	Description

Appendix C: References

Instructions: Summarize the relationship of this document to other relevant references. Provide information for all documents/links used to arrive at and/or referenced within this document.

Example:

No.	Topic	Reference Link
1	How to Create a Credential in Credential Vault?	Click here