



[Edit and Convert PPTx](#)

[Readme](#)

Version 1.0
22 Sept 2020

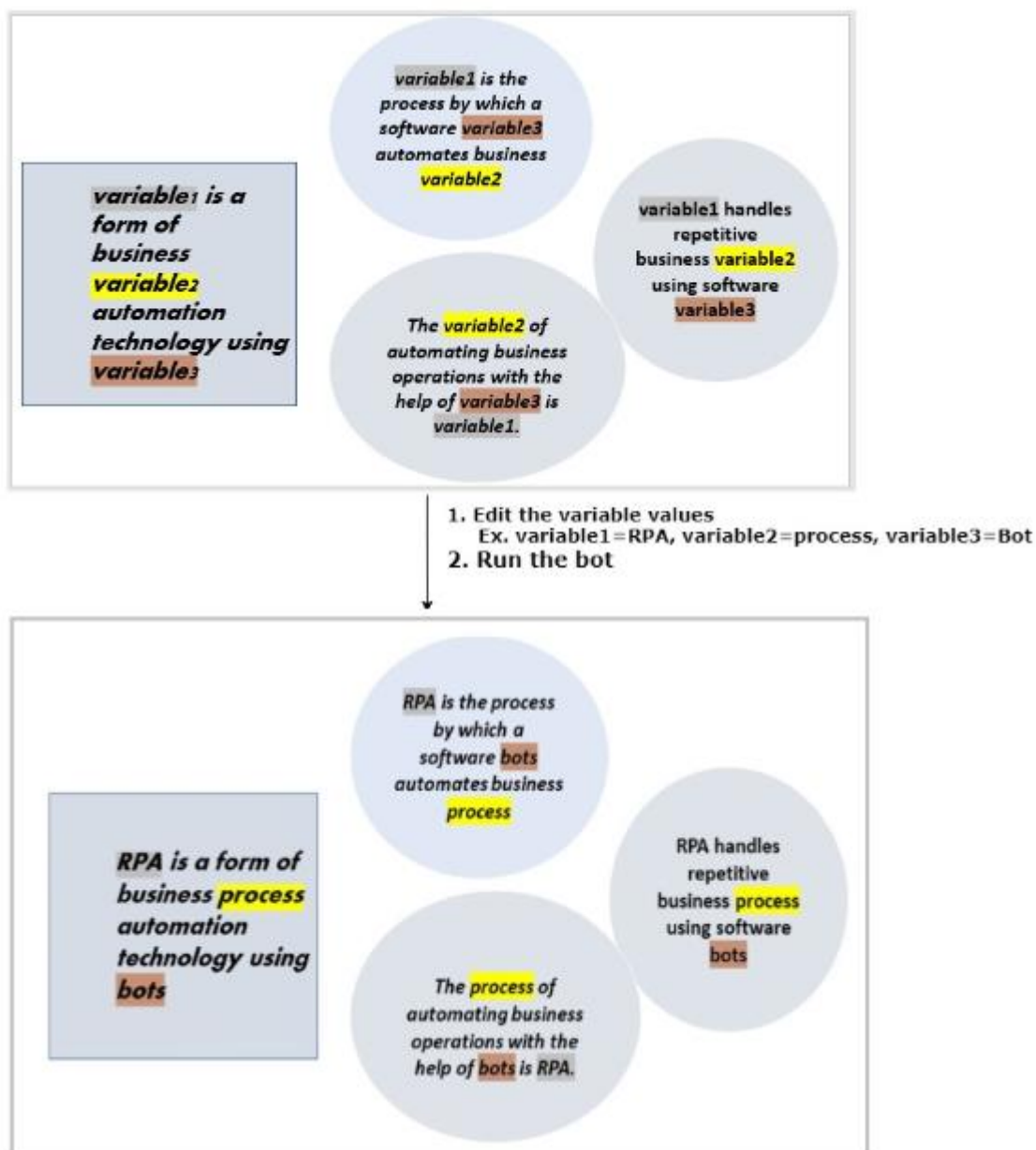
Table of Contents

1. Introduction	2
1.1 Overview	2
1.2 Common Use cases	4
2. Requirements & Prerequisites	4
2.1 System Requirements	4
2.2 Prerequisites	4
2.3 Security Measures	4
3. Getting Started	5
3.1 Skill Matrix	5
3.2 Installation Hierarchy	5
3.3 Quick Start	6
3.3.1 Setup	6
3.3.2 Configuration	6
3.3.3. How to use the bot	6
4. Reports	8
5. Logs	8
6. Troubleshooting & Support	9
6.1 Support	9
6.2 FAQs	10
Appendix A: Record of Changes	11
Appendix B: Acronyms	11
Appendix C: References	11

1. Introduction

This bot can be used to edit the pptx by replacing the text in text box (via variables) and save the edited pptx in one of the formats like .ppt, .jpg, .pdf or .png
Currently this bot is customized to replace the variables in 4 (or less) text boxes present in the pptx and can replace maximum 3 variables per text box.

This bot can also convert the pptx to other formats (.ppt, .jpg, .pdf or .png) without editing the input pptx file



1.1 Overview

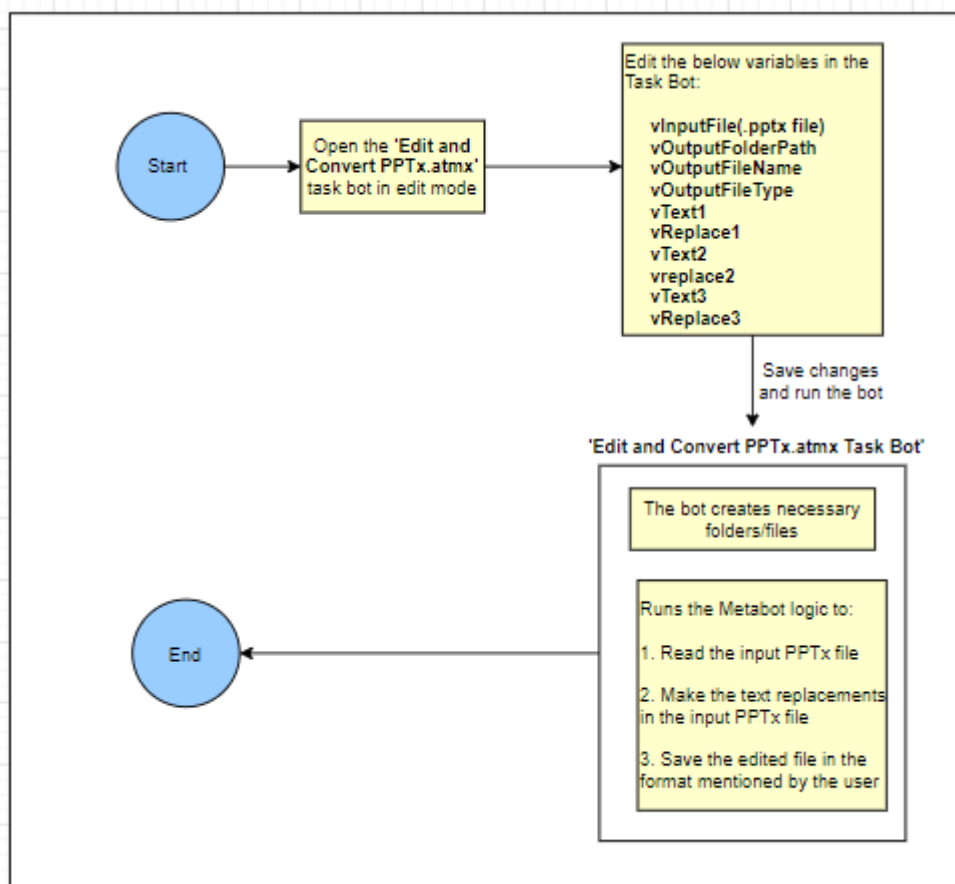
This Bot reads an input .pptx file, edits up to 4 text boxes in the .pptx file and does maximum 3 text replacements per text box and then saves the .pptx in one of the below mentioned formats

- ✓ .ppt
- ✓ .jpg
- ✓ .pdf
- ✓ .png

• Detailed steps are as follows:

- 1) Open the Task bot (.atmx file) in edit mode and input data in the variables
- 2) Save changes and run the bot
- 3) When the bot is run, it reads the input .pptx file, does the text replacements and saves the file in the format mentioned by the user

• Visual Flow –



• Input and Output Example –

Input:

Bot should be edited, and Input values should be provided in the below variables:

- ✓ **vInputFile**
- ✓ **vOutputFolderPath**
- ✓ **vOutputFileName**
- ✓ **vOutputFileType**
- ✓ **vVariable1**

- ✓ **vVariable2**
- ✓ **vVariable3**
- ✓ **vReplace1**
- ✓ **vReplace2**
- ✓ **vReplace3**

Output:

When the bot is run, Output file generated by the bot will be placed in the folder mentioned in the variable vOutputFolderPath

1.2 Common Use cases

1. The bot user can provide up to three texts (per text box) to be replaced along with the respective replacement texts
2. It is ideal to have maximum 4 text boxes in the input .pptx file, if there are more than 4 text boxes/text frames, the extra text boxes will not be visited by the bot and hence no replacements happen in those
3. If the bot user chooses not to replace any text in the input pptx file but simply save the file in one of the supported formats, it can be achieved by leaving the vVariable1, vVariable2, vVariable2, vReplace1, vReplace2 and vReplace3 values empty in the variable manager pane

2. Requirements & Prerequisites

2.1 System Requirements

For the PC or server where the bot needs to run:

- ✓ RAM: 8GB or higher
- ✓ PROCESSOR: Intel Core i5 or higher
- ✓ Hard Disk: Up to 2GB of overall free space in the AA Client installation drive.

2.2 Prerequisites

Software's needed -

- ✓ AA Enterprise Client 11.3.4 or higher
- ✓ AA Enterprise Control Room 11.3.4 (or client compatible version)

2.3 Security Measures

NA

3. Getting Started

3.1 Skill Matrix

The functionality of the Bot has been divided into set of skills.

Below is an overview of how the task bots and meta bots map to these skills:

Skill	TaskBot file	Meta Bot file
Read the input .pptx file, replace text in 4 text boxes/frames and save the edited .pptx file in desired format either.ppt, .jpg, .pdf or .png	Edit and Convert PPTx. atmx	BotStore_EditPPTX.mbot

3.2 Installation Hierarchy

Once the bot is downloaded and installed, the installer creates the files in the folder structure as shown below.

Folder Structure on your Machine:

Folder Structure	Description
<p><AA ApplicationPath>/ Automation Anywhere</p> <ol style="list-style-type: none"> 1. My Tasks <ol style="list-style-type: none"> 1.1 Bot Store <ol style="list-style-type: none"> 1.1.1 Edit and Convert PPTx-QualityArc 	<p><AA Application Path>/Automation Anywhere is the location where AA files are stored on your machine.</p> <p>1. My Tasks My Tasks folder is the default directory where Bot Files are saved.</p> <p>1.1 Bot Store Bot Store folder contains the Bot Name folder which the installer creates while installation of the Bot. This folder gets created by the installer and contains files and folders needed for the bot execution.</p> <p>1.1.1 Edit and Convert PPTx-QualityArc This folder gets created by the installer and contains files and folders needed for the bot execution.</p>

3.3 Quick Start

3.3.1 Setup

To use this bot, there are some steps that user must follow:

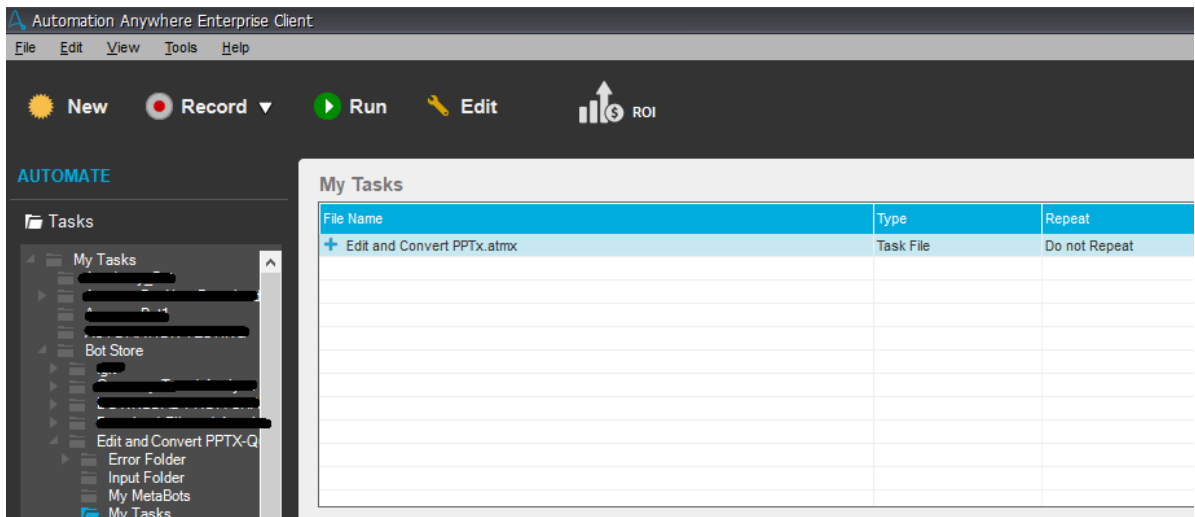
1. Install AAE v11.3.4 client tool or higher in their machine/laptop.
2. After downloading the 'Edit and Convert PPTx' Bot from Bot Store, make sure the 'Edit and Convert PPTx-QualityArc' project folder is in the Bot Store Folder.

3.3.2 Configuration

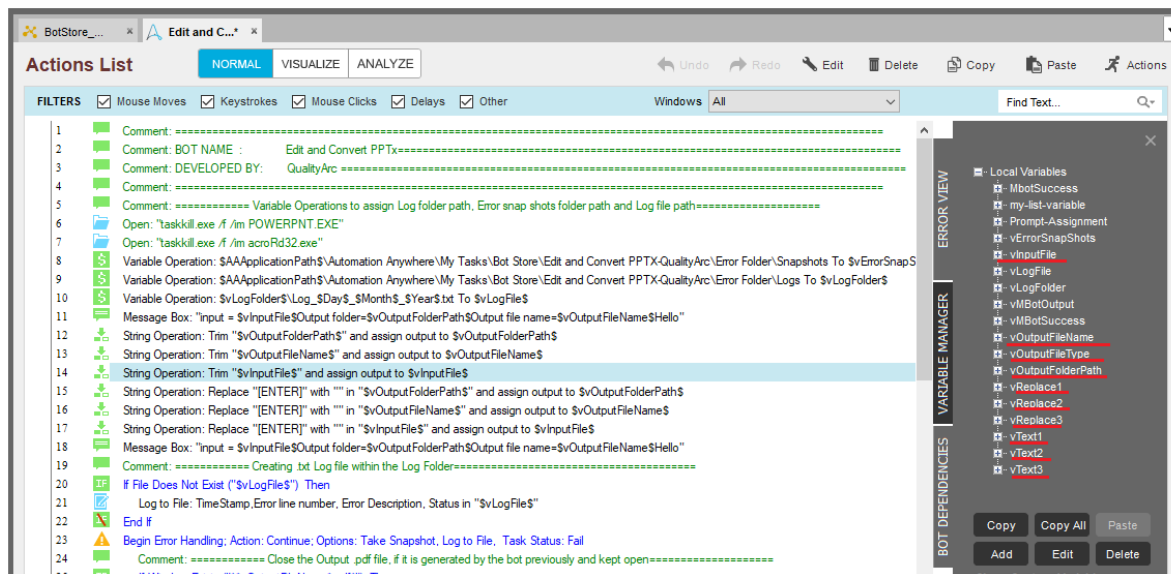
NA

3.3.3. How to use the bot

1. To run the 'Edit and Convert PPTx' bot, after the bot is downloaded from the Bot Store. Go to **AA Application Path > Automation Anywhere > My Tasks > Bot Store > Edit and Convert PPTx -QualityArc > My Tasks > Edit and Convert PPTx. atmx**, as shown below:



2. Right click the Edit and Convert PPTx. atmx and click on Edit
3. In the Edit and Convert PPTx. atmx Work Bench, click on the 'Variable Manager' tab and edit the variables as mentioned below:



Input Variable	Description	Sample input
vInputFile	Path of the input .pptx file	C:\Users\Local User\Desktop\Sample.pptx
vOutputFolderPath	Folder path where the generated output file should be placed	C:\Users\Local User\Desktop\OutputFolder
vOutputFileName	Name with which the output file should be saved	BotOutputFile
vOutputFileType	The type of output file to be generated	Either of the below: ppt pdf jpg png
vText1	Text in the input pptx file that needs to be replaced	name
vReplace1	Replacement text for text provided in vText1 variable	QualityArc
vText2	Text in the input pptx file that needs to be replaced	Year

vReplace2	Replacement text for text provided in vText2 variable	2020
vText3	Text in the input pptx file that needs to be replaced	City
vReplace3	Replacement text for text provided in vText3 variable	Melbourne

4. Save changes and Run the bot
5. After the bot is run, the generated output file can be viewed in the path mentioned in the variable vOutputFolderPath

Name	Date modified	Type	Size
BotOutputFile.pdf	09/09/2020 6:18 AM	Adobe Acrobat D...	63 KB
BotOutputFile.ppt	09/09/2020 6:19 AM	Microsoft PowerP...	1,300 KB
BotOutputFile.jpg	09/09/2020 1:19 PM	JPG File	62 KB
BotOutputFile.png	09/09/2020 1:20 PM	PNG File	122 KB

4. Reports

There are no Bot Insight Reports generated for this Bot.

5. Logs

In case of an error - Error Logs and Error Snap shots are captured.

- a. When the bot runs, Log<date>.txt file is created and placed in the folder at **AA Application Path >Automation Anywhere> My Tasks > Bot Store > Edit and Convert PPTx-QualityArc >Error Folder >Logs**

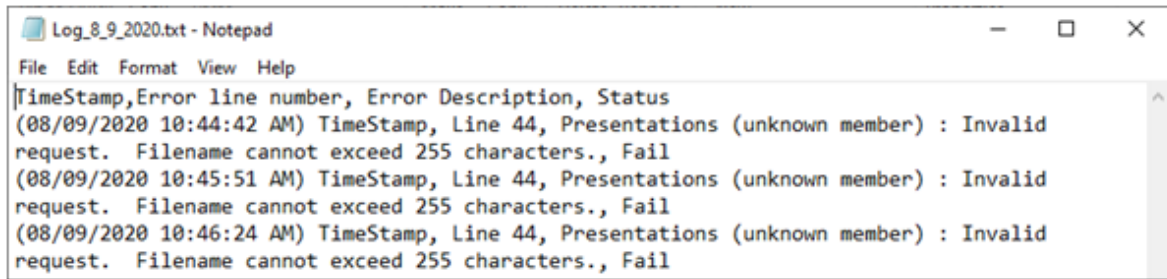
The Logs are generated and the Log<date>.txt file gets updated

Name	Date modified	Type	Size
Log_7_9_2020.txt	09/09/2020 1:18 PM	Text Document	2 KB
Log_8_9_2020.txt	09/09/2020 1:18 PM	Text Document	2 KB
Log_9_9_2020.txt	09/09/2020 1:18 PM	Text Document	2 KB

The error logs will contain the below information:

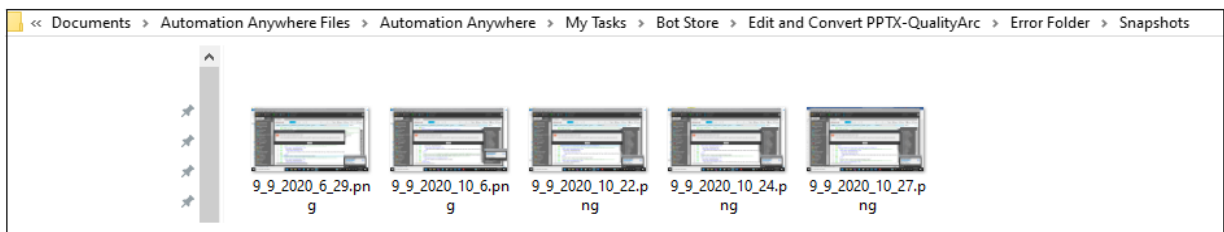
- ✓ Timestamp

- ✓ Error line number
- ✓ Error Description
- ✓ Status



```
Log_8_9_2020.txt - Notepad
File Edit Format View Help
TimeStamp,Error line number, Error Description, Status
(08/09/2020 10:44:42 AM) TimeStamp, Line 44, Presentations (unknown member) : Invalid
request. Filename cannot exceed 255 characters., Fail
(08/09/2020 10:45:51 AM) TimeStamp, Line 44, Presentations (unknown member) : Invalid
request. Filename cannot exceed 255 characters., Fail
(08/09/2020 10:46:24 AM) TimeStamp, Line 44, Presentations (unknown member) : Invalid
request. Filename cannot exceed 255 characters., Fail
```

- b. The error snap shots are placed in the folder **AA Application Path >Automation Anywhere> My Tasks > Bot Store > Edit and Convert PPTx-QualityArc >Error Folder>Snapshots**



6. Troubleshooting & Support

6.1 Support

Free bots are currently not supported directly.

Questions on Bot Functionality or Feature can also be posted to our Community site Apeople.

6.2 FAQs

Q: After bot execution, text is not replaced in the input pptx file

A: This bot makes text replacement only in the first four text boxes/text frames of the pptx file. If the text to be replaced is in the 5th or the following text boxes/text frames, it will be simply ignored

Q: Unable to make more than 3 text replacements in each text boxes/text frames of the input pptx file

A: This bot is designed to replace up to 3 variables per text boxes/text frames, to make more changes the bot needs to be customized.

Q: User of the bot wants to make less than 3 text replacement in the input pptx file

A: Provide data in required number of variables out of vText1, vText2 and vText3 with corresponding replacement text in vReplace1, vReplace2 and vReplace3.

Q: User of the bot does not want to make any text replacements but simply convert the input pptx file to ppt, pdf, jpg or png

A: Do not provide data in any of the input variables vText1, vText2 and vText3

Q: What happens if the same text appears in a single text boxes/text frames multiple time? Will all the occurrences of the text be replaced by the replacement text mentioned by the user?

A: Current version of the bot does not support replacing same text multiple times within a text box/text frame. However, the bot can be customized.

Q: User of the bot wants to edit text in multiple slides within the pptx

A: Current version of the bot supports only one slide within the ppt. However, the bot can be customized.

Please contact support_bots@qualityarc.com for any bot customization.

Appendix A: Record of Changes

Sl. No.	Version	Date	Author	Notes
1	1.0	22 Sept 2020	QualityArc	Version 1.0 Release

Appendix B: Acronyms

Sl. No	Acronym	Description
1	AA	Automation Anywhere
2	CSV	Comma Separated File
3	RAM	Random Access Memory
4	OS	Operating System

Appendix C: References

Sl. No	Topic	Reference Link
1	System Requirements – Client	Click here
2	System Requirements – Control Room	Click here
3	Apeople Community site	Click here
4	Product Documentation Portal	Click here
5	AA client and Control Room version compatibility matrix	Click here