



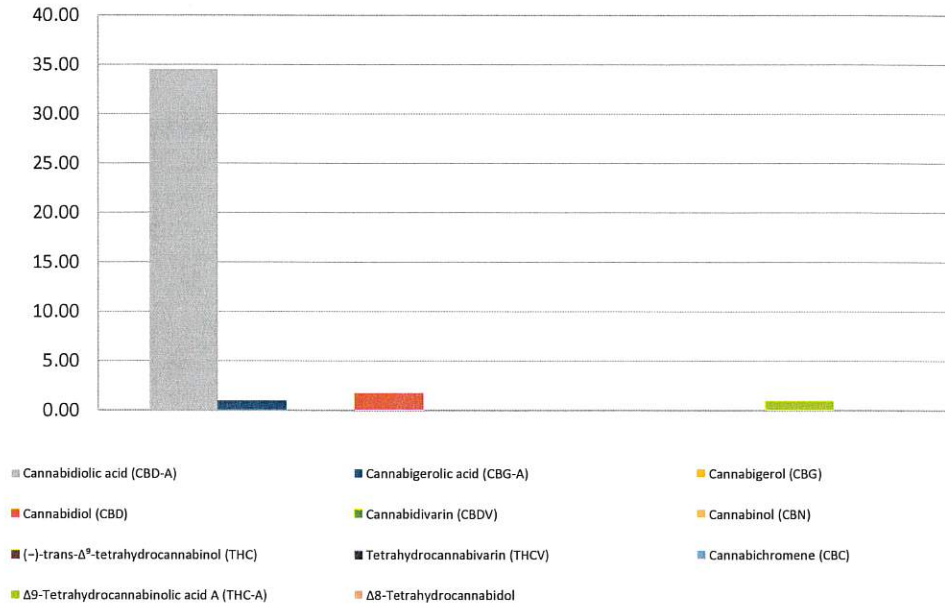
Cannabinoid Profile

Customer: Brizo Pure
 Customer Sample ID: Whole plant fluid
 Laboratory Number: 201902-0094
 Extraction Technician CB
 Analytical Chemist: GB

Extraction Date(s):	Analysis Date(s)
2/4/2019	2/4/2019

Cannabinoid (HPLC)		Results	
	LOD (mg/g)	Percent	mg/g
Δ8-Tetrahydrocannabinol	<0.2		
Cannabidiolic acid (CBD-A)		3.45%	34.51
Cannabigerolic acid (CBG-A)		0.09%	0.91
Cannabigerol (CBG)	<0.2		
Cannabidiol (CBD)		0.16%	1.63
Cannabidivarin (CBDV)	<0.2		
Cannabinol (CBN)	<0.2		
(-)-trans-Δ ⁹ -tetrahydrocannabinol (THC)	<0.2		
Tetrahydrocannabivarin (THCV)	<0.2		
Cannabichromene (CBC)	<0.2		
Δ9-Tetrahydrocannabinolic acid A (THC-A)		0.09%	0.86
Cannabinoids Total		Percent	mg/g
Max Active THC		0.08%	0.75
Max Active CBD		3.19%	31.90
T. Active Cannabinoids		0.16%	1.63
Total Cannabinoids		3.79%	37.91
Ratios			
		42.04 CBD to THC	0.02 :1 THC to CBD

Cannabinoid (mg/g)



Altitude Consulting, LLC utilizes NIST traceable Reference Standards and Certified Reference Material to calibrate analytical instruments along with proven analytical methods. The methods are applied in the most ethical manner following good laboratory practice guidelines. The results of this report are based solely on the sample submitted and cannot be reproduced.



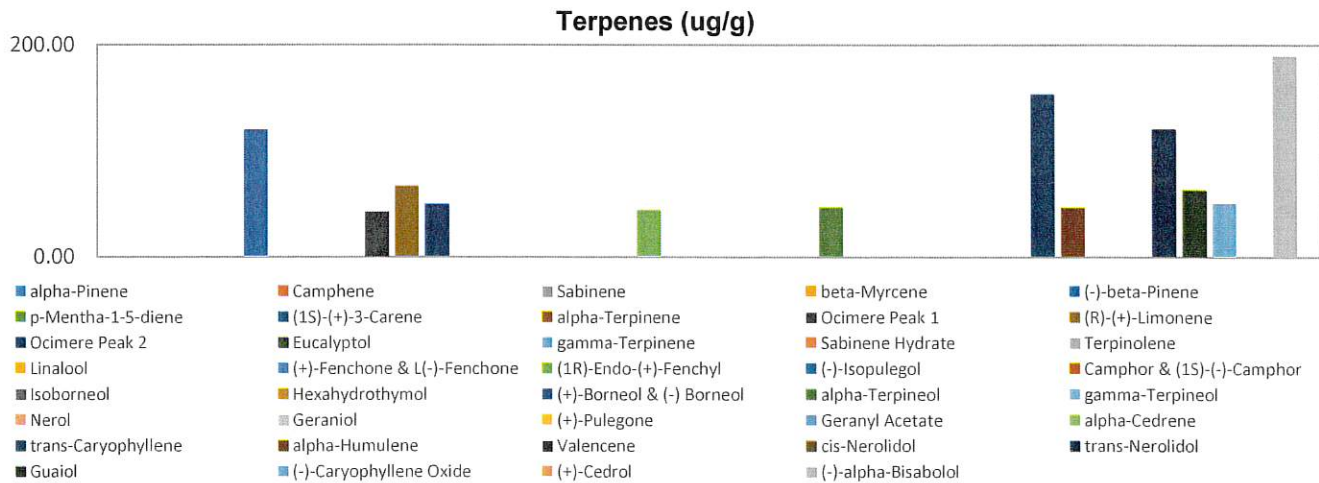
Terpenes Profile

Customer: Brizo Pure
Customer Sample ID: Whole plant fluid
Laboratory Number: 201902-0094
Extraction Technician: CB
Analytical Chemist: GB

Extraction Date(s)	Analysis Date(s)
2/4/2019	2/5/2019

Terpene	Results	Terpene	Results
	ug/g		ug/g
alpha-Pinene		Isoborneol	
Camphene		Hexahydrothymol	
Sabinene		(+)-Borneol & (-) Borneol	
beta-Myrcene		alpha-Terpineol	46.02
(-)-beta-Pinene	119.25	gamma-Terpineol	
p-Mentha-1-5-diene		Nerol	
(1S)-(+)-3-Carene		Geraniol	
alpha-Terpinene		(+)-Pulegone	
Ocimere Peak 1	42.42	Geranyl Acetate	
(R)-(+)-Limonene	66.03	alpha-Cedrene	
Ocimere Peak 2	49.22	trans-Caryophyllene	152.86
Eucalyptol		alpha-Humulene	45.62
gamma-Terpinene		Valencene	
Sabinene Hydrate		cis-Nerolidol	
Terpinolene		trans-Nerolidol	120.05
Linalool		Guaiol	62.83
(+)-Fenchone & L(-)-Fenchone		(-)-Caryophyllene Oxide	50.02
(1R)-Endo-(+)-Fenchyl	43.22	(+)-Cedrol	
(-)-Isopulegol		(-)-alpha-Bisabolol	189.68
Camphor & (1S)-(-)-Camphor			

Empty result indicates data is less than detection limit. Reporting Limit is roughly 40 ug/g depending on amount extracted.



Altitude Consulting, LLC utilizes NIST traceable Reference Standards and Certified Reference Material to calibrate analytical instruments along with proven analytical methods. The methods are applied in the most ethical manner following good laboratory practice guidelines. The results of this report are based solely on the sample submitted and cannot be reproduced.