

Window Installation

Looking at windows in a different way.™

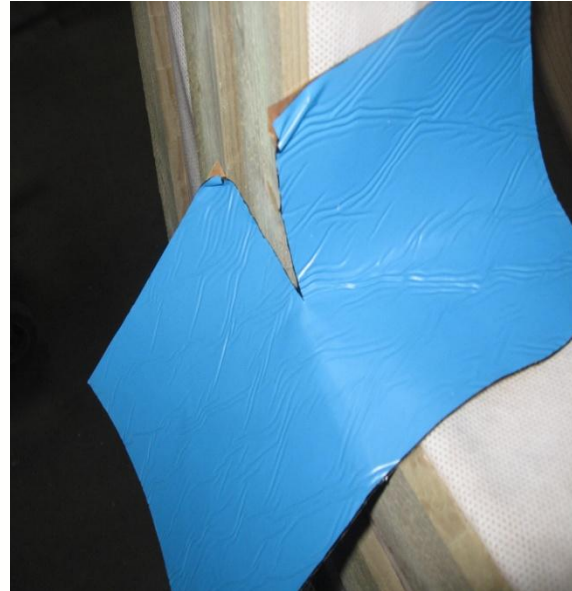
1. Cut the weather resistant barrier from the rough window opening;
 - Cut the top portion to create a 12" flap and
 - temporarily tape above the head.



Looking at windows in a different way.™

2. Install sill pan flashing;

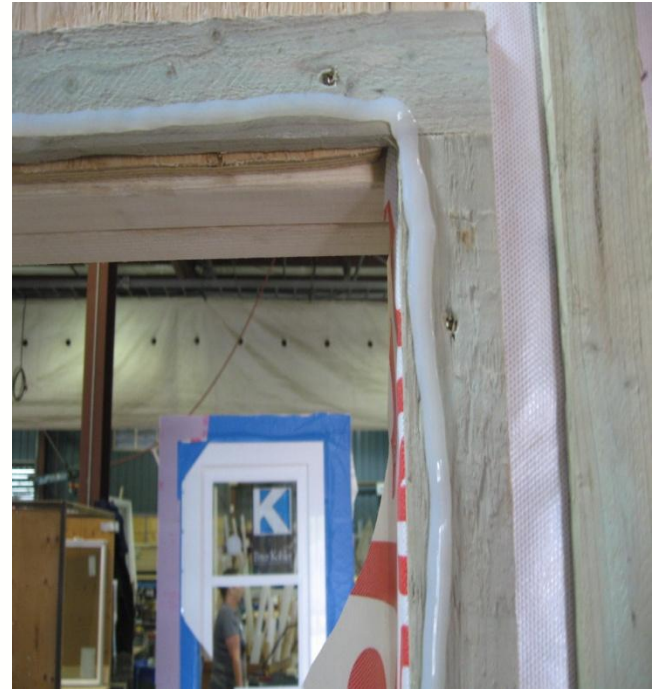
- Along sill
- Overlap into rough opening
- Up 6" to 8" of jamb
- Cut out 2 pieces to overlap your corners



3. Shim the sill and jambs;
- allow a minimum ¼” to ½” gap between the window and rough opening.
 - Note: When installing twin or triple units, shim the sill directly under the T-Mullion(s) for added support



4. Remove packaging material, shipping blocks, etc.
5. The windows must be closed and locked before placing into opening.
6. Apply a continuous bead of good quality sealant along the jambs and head of the window nailing flange and along the bottom leaving gaps.



Looking at windows in a different way.™

7. Set shims under sill and at correct locations along jambs.
 - Note; do not shim above the window. There should be no transfer of load onto the window frame.



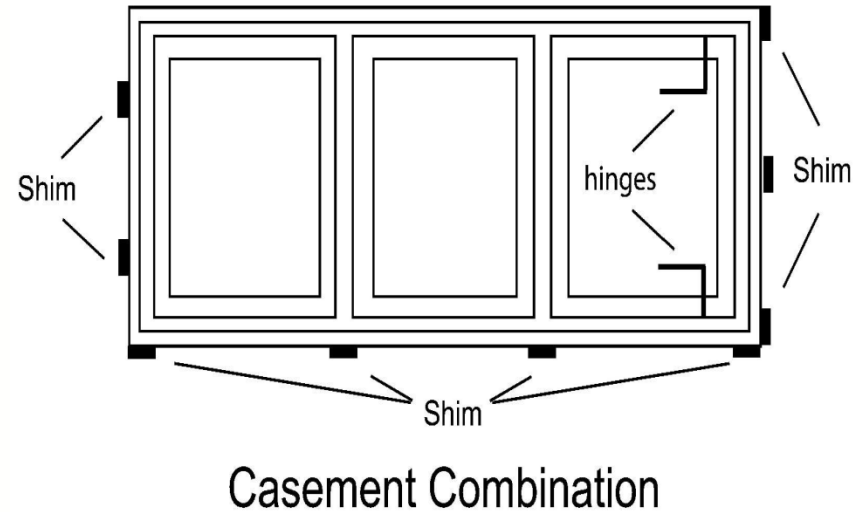
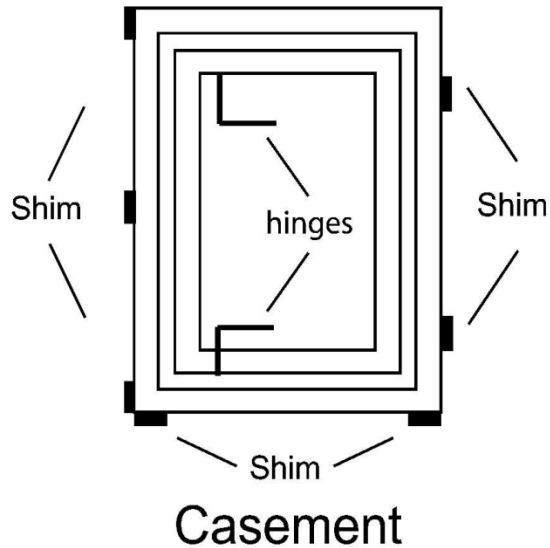
Looking at windows in a different way.™

9. Place the sill of the window in the rough opening then tilt the rest of the window firmly into the opening.



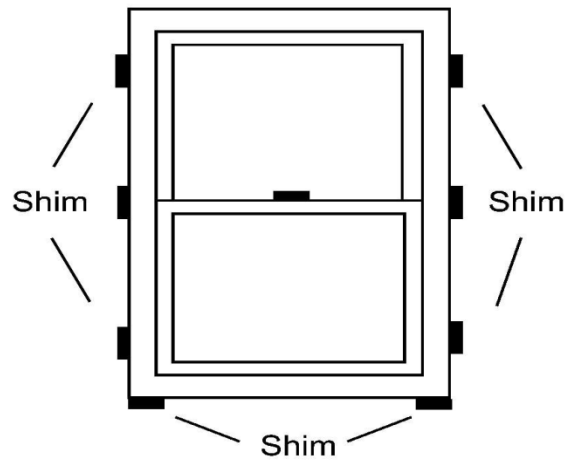
Looking at windows in a different way.™

Casement Shimming

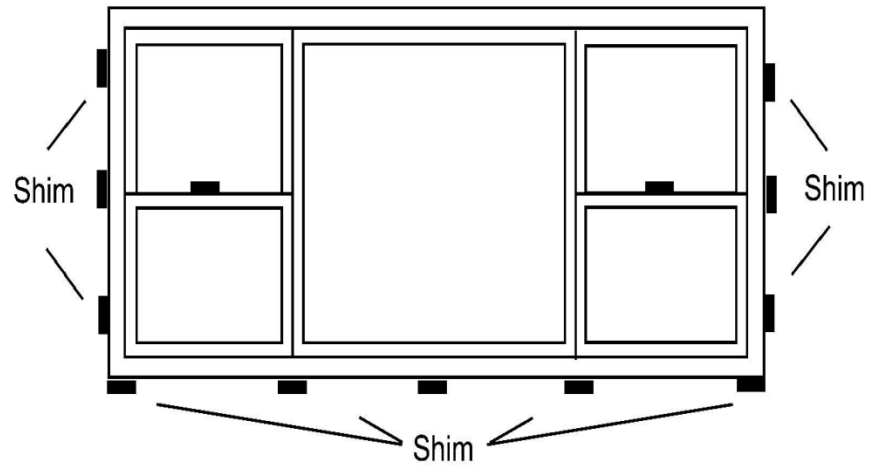


Looking at windows in a different way.™

Single/Double Hung Shimming



Single or Double Hung



Single or Double Hung Combination

10. Nail one fastener 4 to 6" from the top corner along one jamb.
 - Do not drive all the way in.
 - Check for level, plumb and true. Shim as necessary.
 - Check that the window operates smoothly.



Looking at windows in a different way.™

11. Continue to fasten the window in place along the nailing flange.

Note: windows with wide 3 1/2" brickmould or greater are not to be installed by the nailing flange alone.

- Anchor screws are to be used in the predrilled installation holes in the jamb of the window or
- Install using installation clips provided.



13. Install the jamb flashing over the nailing flange extending 2 to 3" above the head and overlapping the sill flashing by approximately 1/2".

Note: do not apply flashing **over** the sill nailing fin to allow for moisture to escape.



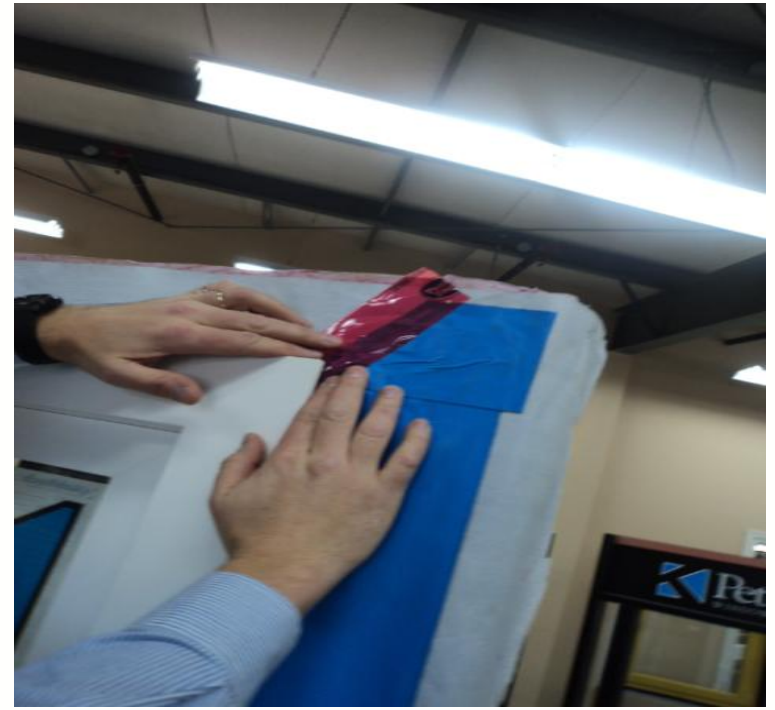
Looking at windows in a different way.™

14. Install the head flashing over the nailing flange of the head extending 1" beyond the jamb flashing.



Looking at windows in a different way.™

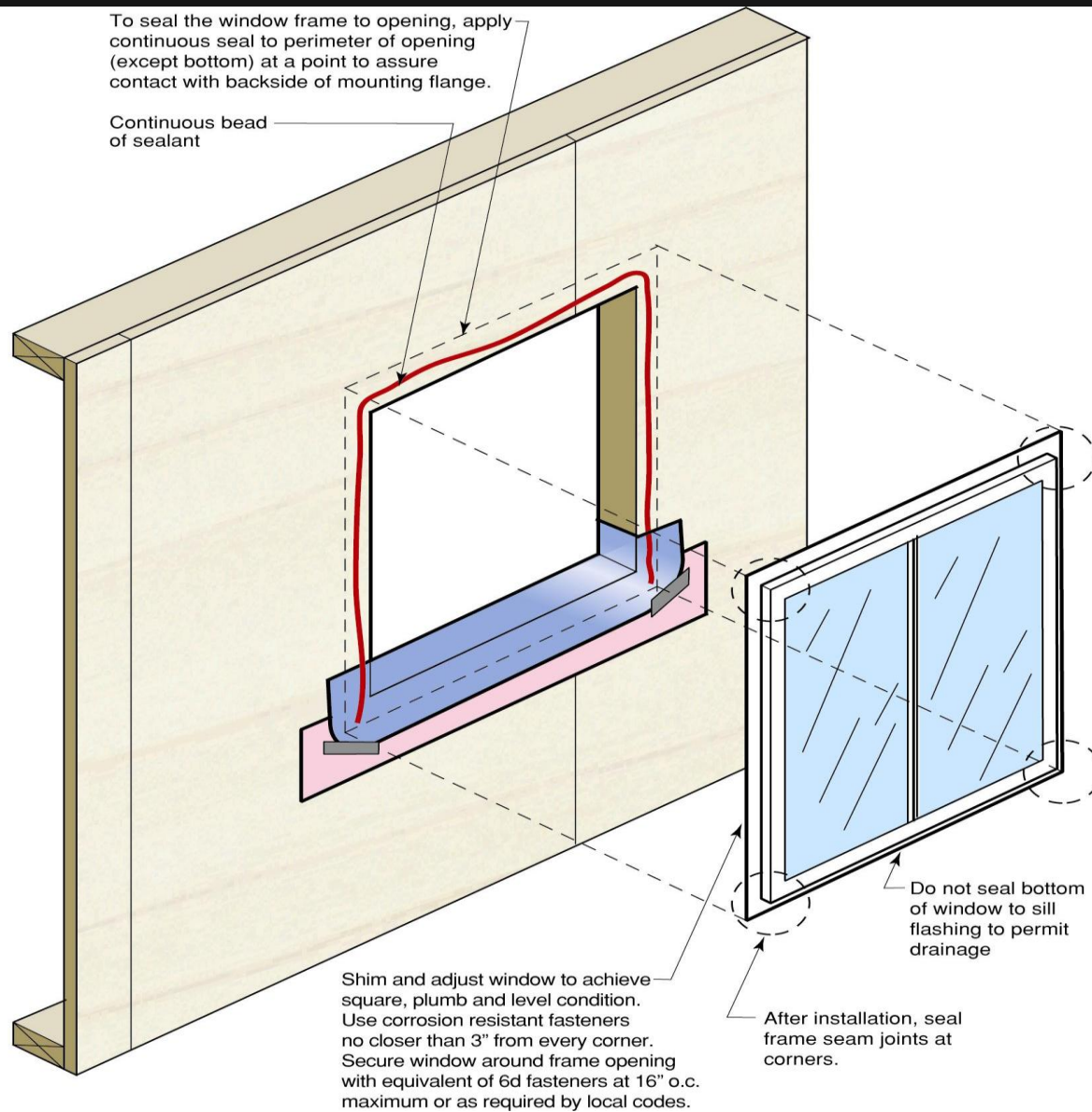
15. Flip the wall cover back over the head flashing and tape in place.



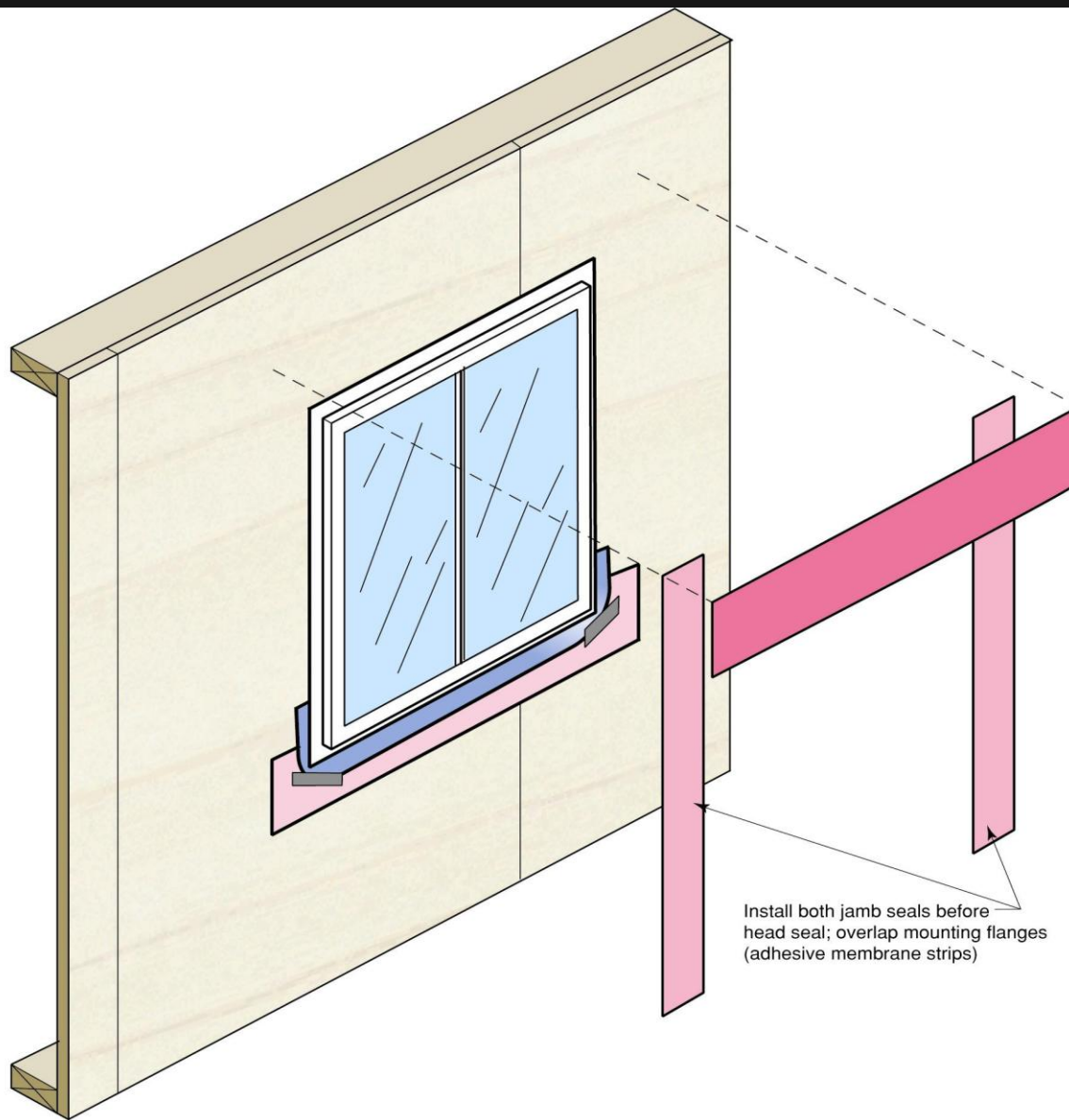
Looking at windows in a different way.™



Looking at windows in a different way.™

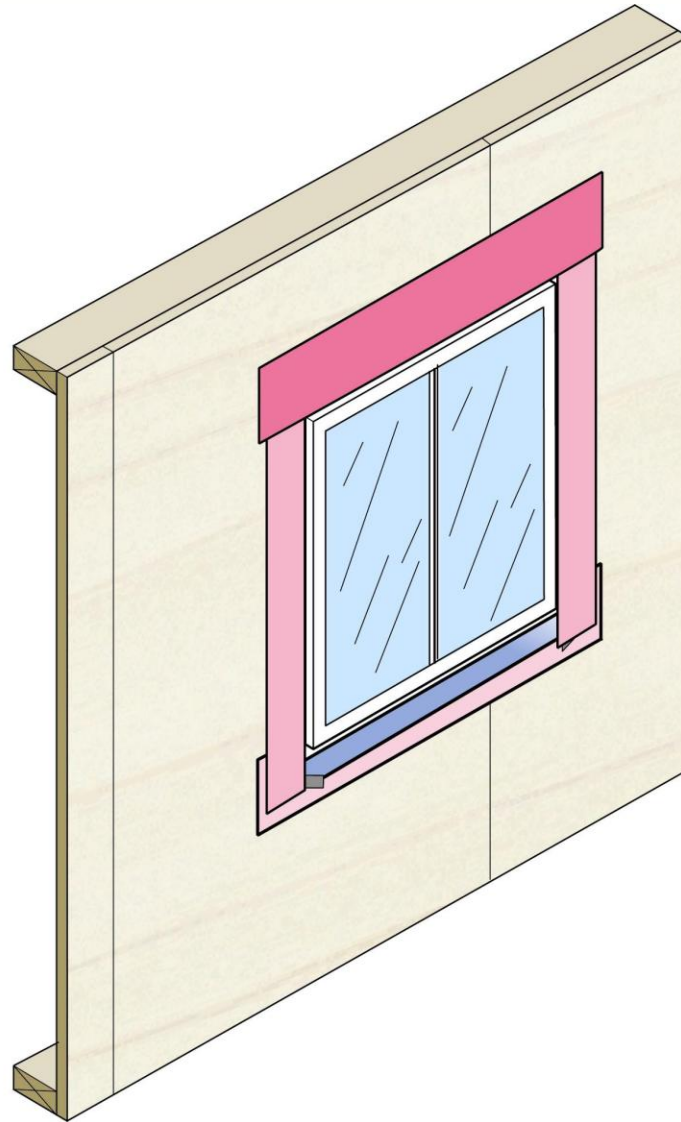


Looking at windows in a different way.™



Install both jamb seals before head seal; overlap mounting flanges (adhesive membrane strips)

Looking at windows in a different way.™

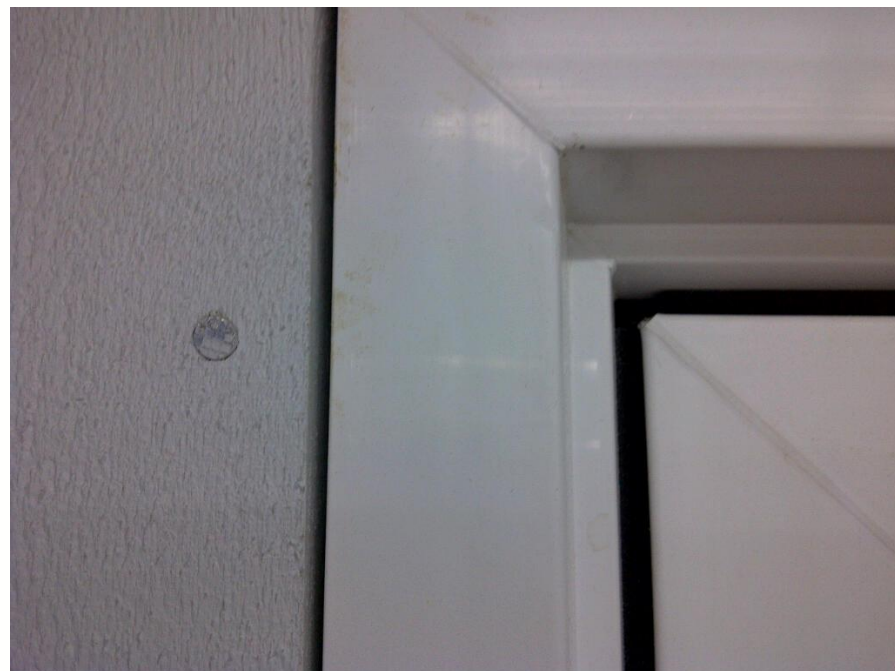
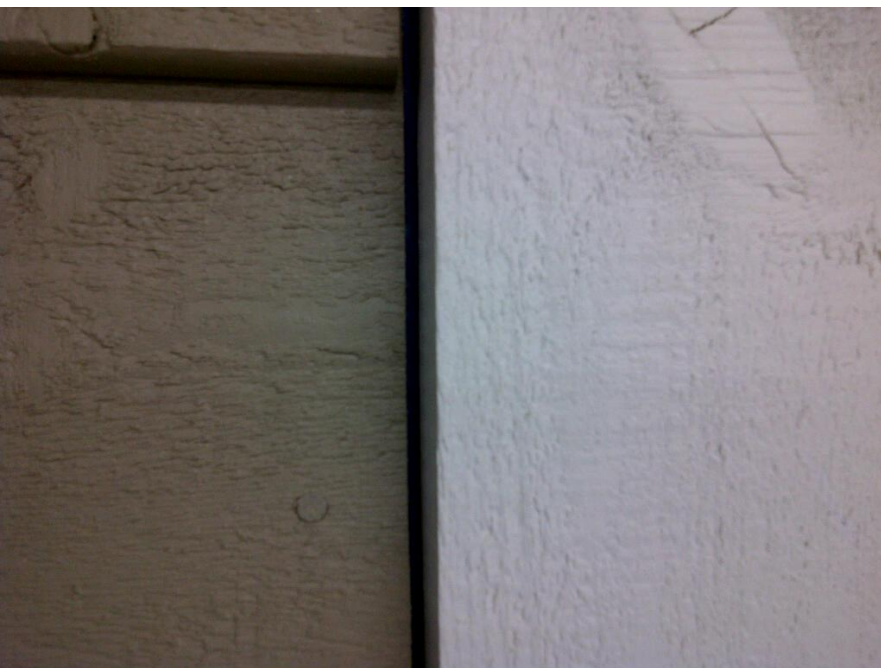


Looking at windows in a different way.™

18. Use fiberglass insulation to fill the gap between the window and the framing. **Do not overfill.**

Note: if using expanding foam, use low expansion foam as this could bow the window jambs and affect the operation of the window.

Also ensure there is room for at least a 1/8" expansion and contraction on the external wall between the wall covering and the window trim.



Note: For painted windows, there are air vents drilled into the edges of the window. Do not block these holes.

Looking at windows in a different way.™

Retrofit Application:

- For a casement window,
 - If there is no nailing flange, caulk behind the brick mould. Have someone assist you to hold the window firmly in place in the rough opening.
 - For an operating casement window, screw through the pre-drilled holes in the frame profile.

For a fixed Supreme Casement window,

- Remove the glazing bead stop and
- Screw through pre-drilled holes in the glazing track with screws provided.
- Re-install glazing bead stops using plastic mallet.



Looking at windows in a different way.™

- For Single Hung, Double Hung and Glider windows;
 - Screw through pre-drilled holes in the window jambs.
 - The bottom holes will be visible in the screen track.
 - To access the top hole on a hung window, remove the balance cover.



Note: cover the open screw holes with the vinyl screw hole caps provided. Use a dab of caulking prior to inserting the cap to prevent air leakage.

General Care:

- Use extra care when installing below 5° C/45°F avoiding impact to frame and sash.
- Operating hardware and drainage cavities should be kept clean of obstructions (dust, drywall dust, etc.) and be lubricated annually.