

## Neion Plus wall faced intelligent toilet pan and Arcisan in-wall cistern

NEO41025

**Package comprised of:** Neion Plus wall faced intelligent toilet with remote and Arcisan Slim concealed cistern.



### Neion Plus wall faced intelligent toilet pan with remote

NEO41200



### Arcisan Slim Concealed Cistern

ARO4430

## Neion Plus wall faced intelligent toilet with remote

NEO41200

**Power:** 950W

**Rated voltage:** AC220 - 240V, 50-60Hz

**Water proof rating:** IPX4

**WELS:** 4 stars - 3/4.5L

**WELS License / Reg No:** 1483 / L07620

**Set-out:** S-trap 90mm  
P-trap 180mm

**Finish:** White

### NOTE!!!

IMPORTANT – refer to the installation guide for correct install criteria.

The Neion floor mount water closet pan with integrated bidet seat complies with WMTS-051.

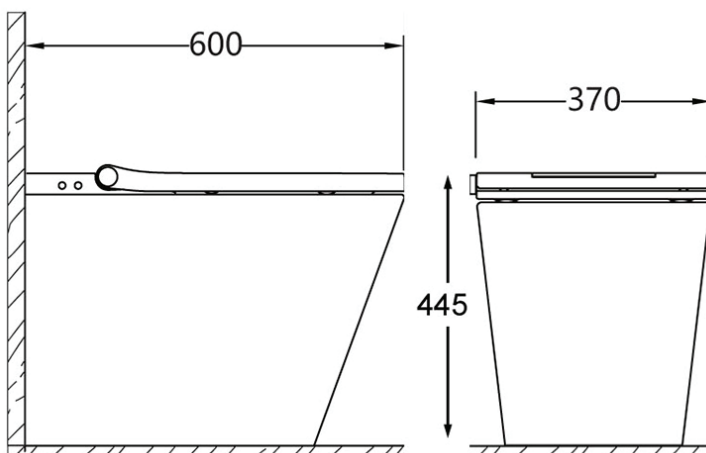
Bidet seat has integral break tank with air gap complying with AS 2845.2. Thus it meets the High-Hazard backflow prevention requirements of AS/NZS 3500.1 without the need for a RPZ valve.



The Neion Plus incorporates a lot of the features of the Neion whilst including the features of a heated seat and prewetting of the bowl. The design is strictly modern with the straight lines fitting in with any contemporary bathroom design.

**The Neion Plus has an extensive list of features as shown below:**

- Comfort Front and rear washing functions
- Water pressure and temperature control
- Drying function with air temperature control
- LED ambient light
- Deodoriser
- Heated seat with adjustable temperature
- Prewetting of the bowl
- Removable self-cleaning nozzle
- Backlit glass status panel



## Slim Concealed Cistern

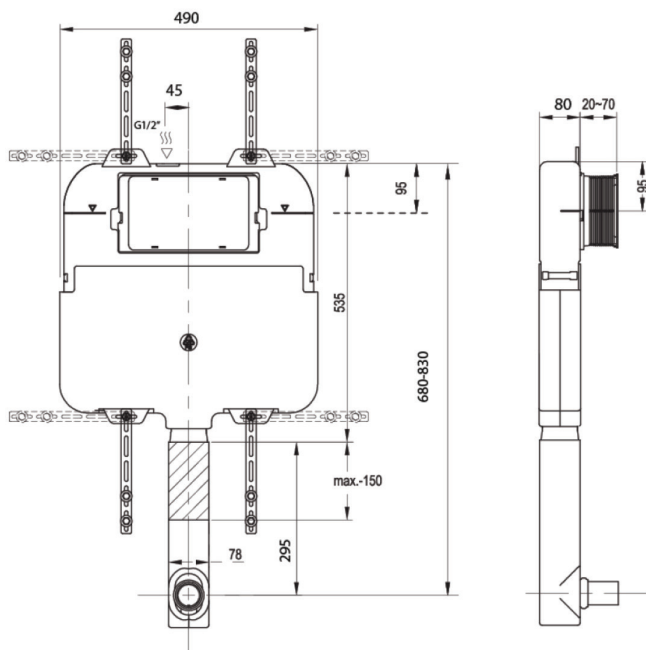
ARO4430

**WELS:** 4 star

**Litres/min:** 4.5 / 3

**Inlet Position:** Top left

**Material:** High density polyethylene



The slim concealed, dual flush cistern is made from high density polyethylene, incorporating inbuilt overflow. Due to it's slim design, the cistern can be installed in a standard 90mm metal or timber stud wall application.

**WARRANTY**  
10 years

\*Conditions apply.

streamline

www.streamlineproducts.com.au | Ph: 1300 735 352

Dimensions are in millimeters and are subject to manufacturing variations. Streamline reserves the right to vary specifications at any time without notice. Information provided within this specification sheet is correct at the date of printing. Please confirm all particulars with your sales consultant prior to purchase.  
Version: 1.0 - March 2023