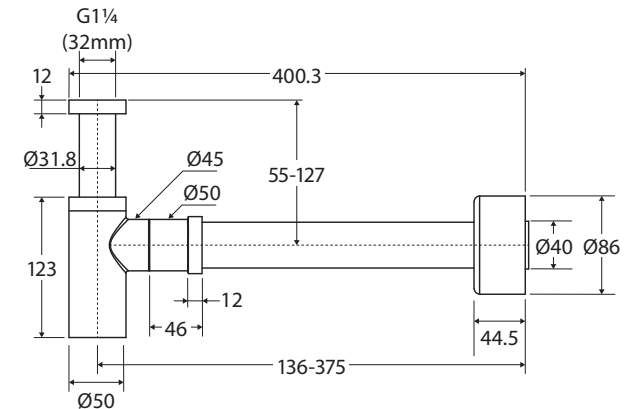
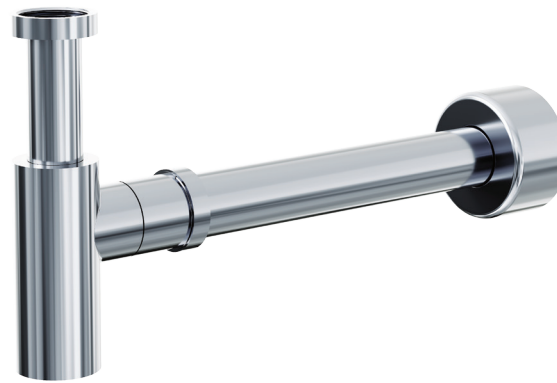


Universal BOTTLE TRAP

Features

- Can be installed for AS1428.1:2021 Accessible compliance
- Designed for use with wall mounted basins
- Colours match Fienza tapware, showers, and accessories
- Adjustable height and length
- Suits 32 mm basin wastes
- Made from solid brass



Available in



Chrome
BTRAPF



Electroplated
Matte Black
BTRAPB



PVD Brushed Nickel
BTRAPBN



PVD Gun Metal
BTRAPGM



PVD Urban Brass
BTRAPUB

Cleaning & Care

- Regularly clean with mild soapy water using a microfibre cloth.
- In highly polluted or coastal locations, we recommend cleaning 2-3 times per week.
- Do not use harsh detergents, bleach, cream cleaners or citrus based cleaners. These substances are abrasive and will damage the surface.
- Do not use undue pressure and wipe in one direction only.



We aim to ensure that specifications are correct at the time of publication. All measurements are shown in millimetres. Always use measurements of actual product received for final specification as the technical drawing may contain differences. Due to printing limitations, physical colour may vary from the image shown. Fienza reserves the right to make modifications without prior notice.