





Zen SS316L Wall Basin/Bath Mixer Separate Back Plate 185/230mm Spout

Finish & SKU

| | | | |
|--|---|---|---|
|  | Brushed Bronze NR162210b(185/230)BZ |  | Graphite NR162210b(185/230)GR |
|  | Brushed Gold NR162210b(185/230)BG |  | Brushed Nickel NR162210b(185/230)BN |



Specifications

Watermark License

WM-060073

Temperature Rating

Min 1°C-Max 75°C

Pressure Rating

Min 150kpa-Max 500kpa

Features

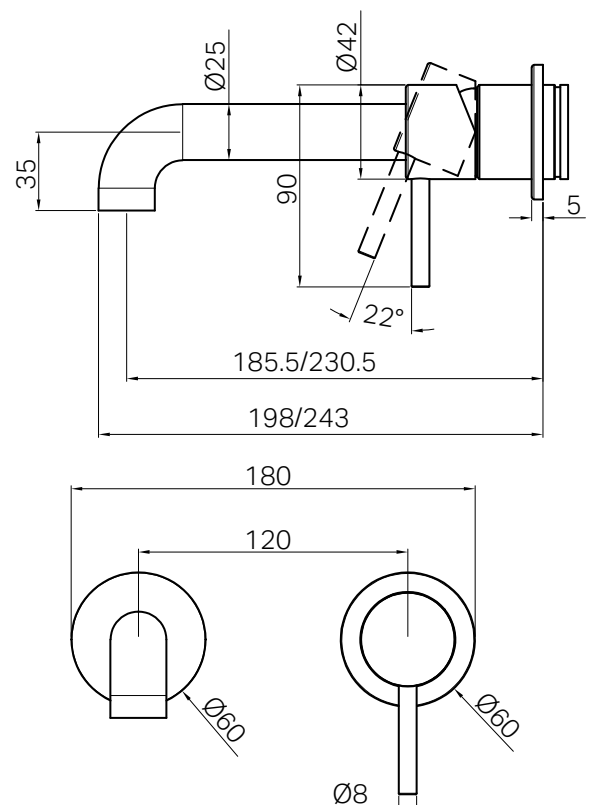
- 35mm ceramic disc cartridge can be adjusted to control water temperature and flow control settings, saving energy
- Solid 316L stainless steel construction for longevity
- Water inlets- 1/2 BSP female
- NEOPERL laminar aerator with slim stream flow director
- Suitable for mains pressure installation
- Replaceable trim kits
- Available in 2 different spout length
- Packed separately (Body and Trim Kits)

Maintenance And Care

- Regularly check the mixer and connections for signs of wear or leaks.
- Clean the tap with mild soapy water to maintain its appearance, avoiding harsh chemicals and abrasive materials that may damage the finish.



Lead Free



- Dimensions are nominal measurements only.