








Mecca Care Basin Mixer

Finish & SKU

 Chrome NR221901dCH	 Brushed Nickel NR221901dBN
 Matte Black NR221901dMB	 Brushed Gold NR221901dBG
 Brushed Bronze NR221901dBZ	 Matte White NR221901dMW
 Gun Metal NR221901dGM	



Specifications

Watermark License

WM-060073

Temperature Rating

Min 1°C-Max 75°C

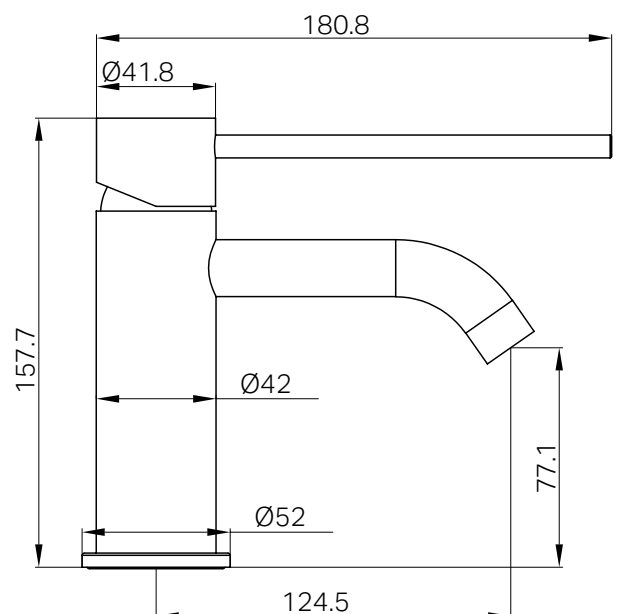
Pressure Rating

Min 150kpa-Max 500kpa



Features

- 25mm cartridge
- Solid brass construction for longevity
- Extended lever handle for care facilities or those with restricted movement
- NEOPERL aerator with slim stream flow director
- Polyamide flexible hose-½ BSP female
- Comply to AS1428.1 2009 AMDT 1 design for access and mobility requirements



Maintenance And Care

- Regularly check the mixer and connections for signs of wear or leaks.
- Clean the tap with mild soapy water to maintain its appearance, avoiding harsh chemicals and abrasive materials that may damage the finish.

- Dimensions are nominal measurements only.