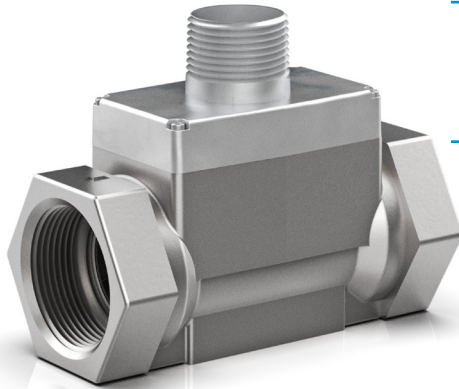


## Turbine Meter ACCESSORIES

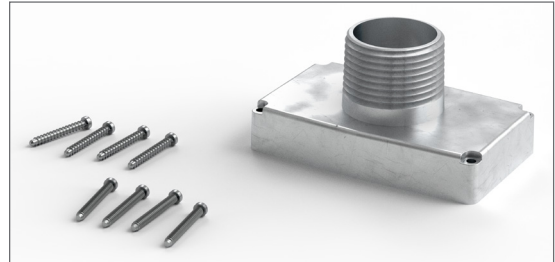
### CONDUIT ADAPTER KIT

PART NO. 113437-01

– Shown on a G2 Series Meter



The **Conduit Adapter** allows you to enclose wiring from the FM Approved Sensor or the ATEX Approved Sensor. The kit includes a turbine meter cover with a 1 inch male NPT conduit fitting and screws for plastic or metal installation.



### 90° DISPLAY ADAPTER KIT

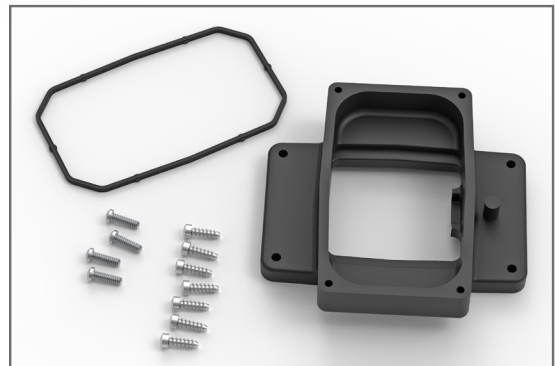
PART NO. 125260-02

– Shown on a TM Series Meter with Q9 Display



The **90° Display Adapter** allows for horizontal readout of vertical meters. Includes adapter, O-ring, and screws required for installation.

Can be ordered with a meter. Specify Q1 option with meter order.



# FLOMEC®

Wichita · Sydney

GREAT PLAINS INDUSTRIES 

© 2020 Great Plains Industries, Inc. All Rights Reserved.

**Service & Warranty:** For technical assistance, warranty replacement or repair contact your FLOMEC® or GPI® distributor. In North or South America: **888-996-3837 / FLOMECmeters.com**  
Outside North or South America: **+61 2 9540 4433 / FLOMECmeters.com**

IND-1043 Turbine Meter ACCESSORIES 10/2020