

INSTRUCTION SHEET

V25 Timer Circuit Replacement

PARTS REQUIRED

170500-06 V25 Timer Circuit Kit or
170500-09 V25-024 Timer Circuit Kit

TOOLS NEEDED

Phillips Screwdriver
5mm Allen Key
4mm Allen Key
Pliers

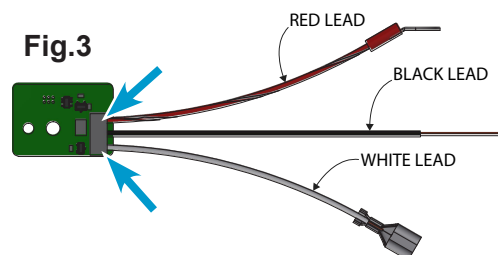
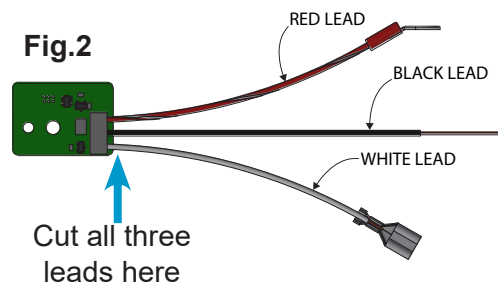
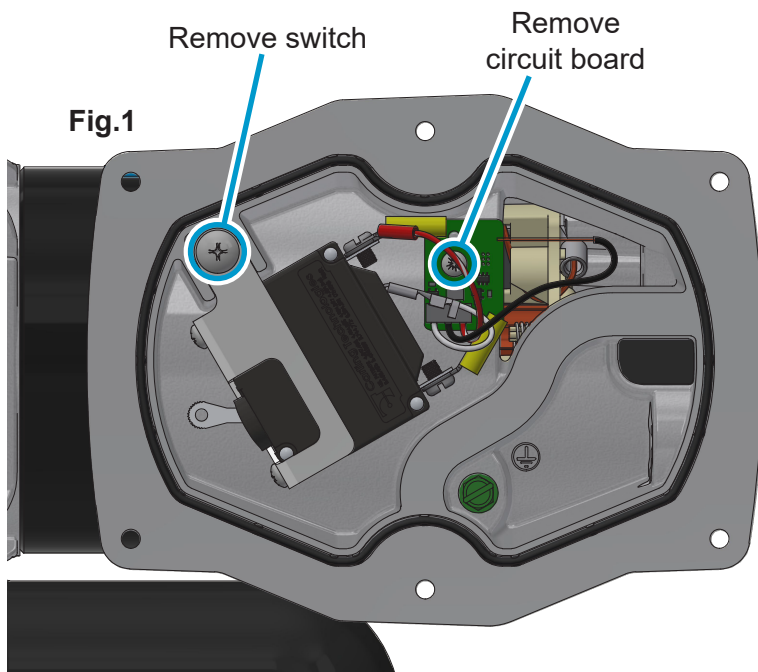
⚠ WARNING

Always disconnect power before repairing or servicing.
Failure to do so could result in serious injury or death.

Never apply electrical power to the system when any of the cover-plates are removed.

INSTRUCTIONS:

1. Disconnect power from the pump system.
2. Use 4mm Allen Key and remove the two M6 BHCS to remove the nozzle cover.
3. Use 5mm Allen Key and remove the six M6 SHCS to remove the coverplate.
4. Remove the switch and circuit board via the two phillips head screws **Fig. 1**
5. Cut all three wire leads close to the circuit board as indicated on **Fig. 2**.
6. Insert wire leads into openings on the terminal block of the timer circuit as shown on **Fig. 3**.
7. To secure wires to timer circuit, using pliers carefully crimp the terminal block at the locations indicated in **Fig.3** until terminal block is flush with circuit board.



INSTRUCTION SHEET

V25 Timer Circuit Replacement

8. Reattach the circuit board and switch.
9. Ensure mating surfaces of switch coverplate are free of debris and the coverplate seal is seated. Replace switch coverplate, ensuring that the switch and switch actuator are in the same "off" orientation. Torque bolts to 95-105 in-lbs.
10. Reattach the nozzle cover.

