



SOLAR FLEX™

Flat has never been so powerful.



HIGH-EFFICIENCY LOW-PROFILE MONOCRYSTALLINE PANEL KITS



GP-FLEX-550



GP-ECLIPSE-FLEX-190

Go Power! Solar Flex™ kits use flexible, high-efficiency back-contact solar modules that conform to almost any surface. These kits use high-efficiency, marine-grade solar modules - a versatile battery charging solution that:

- avoids custom mounts (110 and 50 watt modules curve up to 30 degrees)
- has a durable top-sheet
- can be affixed with adhesive or screws
- provides a durable surface (modules are less than 1/8" / 3mm thick)
- is ideal for lightweight RVs (modules are 82% lighter)

GP-FLEX-550 kit includes high-efficiency monocrystalline solar panel(s), GP-MPPT-PRO-60 solar controller with Bluetooth® Wireless Technology Dongle, and a Solar Controller Remote, solar connectors and mounting hardware.

GP-ECLIPSE-FLEX-190 kits include 1x high-efficiency monocrystalline solar panel (190 watts), 30 amp MPPT, stackable solar controller, RV-C compatible solar controller, Bluetooth®-enabled remote, solar connectors and mounting hardware.

GP-FLEX-220 / 110 kits include high-efficiency monocrystalline solar panel(s) (220/110 watts), GP-PWM-30 (30 amp) solar controller with Bluetooth® Wireless Technology, solar connectors and mounting hardware. To learn more about the SB-PWM-30BT's capabilities, visit gopowersolar.com/bluetooth.

GP-FLEX-35 kit includes 1x high-efficiency monocrystalline solar panel (35 watts), a GP-SB-PWM-10 (10 amp) solar controller, solar connectors and mounting hardware.

GP-FLEX-55 kit includes 1x high-efficiency monocrystalline solar panel (55 watts), a GP-SB-PWM-10 (10 amp) solar controller, solar connectors and mounting hardware.

GP-ECLIPSE-FLEX-190E expansion kits include 1x high-efficiency monocrystalline solar panel (190 watts), and solar branch connectors.

GP-FLEX-55E expansion kit includes 1x high-efficiency monocrystalline solar panel (55 watts), and solar branch connectors.

GP-FLEX-110E expansion kit includes 1x high-efficiency monocrystalline solar panel (110 watts), and solar branch connectors.



GP-FLEX-220

GP-FLEX-110

GP-FLEX-55

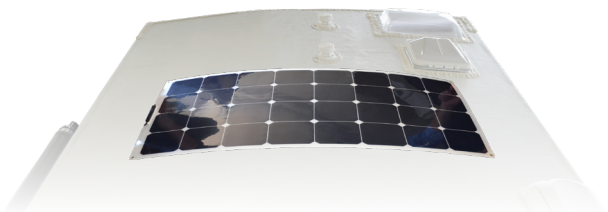
GP-FLEX-35



GP-FLEX-55E

GP-FLEX-110E

MC4 branch connectors



30° max. recommended bend



FLEX™
Flat has never been so powerful.

SOLAR PANEL

SPECIFICATIONS	GP-FLEX-550/220 (5/2 X FLEX-110)	GP-ECLIPSE-190 (190E)	GP-FLEX-110 (110E)	GP-FLEX-55 (55E)	GP-FLEX-35
Cell type	Monocrystalline				
Rated Power (Pm)	550W / 220 W	190 W	110 W	55 W	35 W
Maximum Power Voltage (Vmp)	17.5V	20.1V	17.5V		
Maximum Power Current (Imp)	28.4A/11.36A	9.89A	5.68A	2.88A	1.70A
Open Circuit Voltage (Voc)	21.0V	23.4V	21.0V	19.0V	21.0V
Short Circuit Current (Isc)	31.55A/12.62A	10.72A	6.31A	3.04A	1.88A
Max System Voltage	600VDC				
Weight	14.5lbs (6.6 kg) / 5.82 lbs (1.7 kg)	8.3lb (3.76 kg)	2.9 lbs (1.35 kg)	1.6 lbs (0.72 kg)	1.1 lb (0.49 kg)
Dimensions	44.6 x 21.4 x 0.1 in (1134 x 544 x 3 mm)	55.98 x 27.20 x 0.1 in 1422 x 691 x 3 mm	44.6 x 21.4 x 0.1 in (1134 x 544 x 3 mm)	42.1 x 11.3 x 0.1 in (1070 x 286 x 3 mm)	24.4 x 14.9 x 0.1 in (620 x 380 x 3mm)

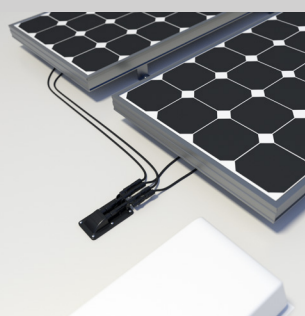
DIGITAL SOLAR CONTROLLER

SPECIFICATIONS	GP-RVC-30-MPPT	GP-MPPT-PRO-60	GP-SB-PWM-30BT	GP-SB-PWM-10
Nominal System Voltage	12/24V	12/24/36/48V (auto-recognition)	12V	12V
Max Solar Array Current	30A	60A	30A	10A
Battery Voltage Range	8V - 28V	9V - 65V	6V - 15.5V	6V - 15.5V
Max. Solar panel input voltage	28V	28V - 48V	28V	28V
Operating Consumption	8mA	-	6mA	6mA
Display Consumption	-	-	≤15mA	≤15mA
Temp. Compensation	- 24mV/°C / -13mV/°F	-	- 24mV/°C / -13mV/°F	- 24mV/°C / -13mV/°F
Operating Temperature	-35 ~ 45°C / -31 ~ 113°F	-35 to 45°C, -31 to 113°F	-40 to 60°C / -40 to 140°F	-40 to 60°C / -40 to 140°F
Humidity	99% N.C.	99% N.C.	99% N.C.	99% N.C.
Dimensions (H x W x D):	85 x 197 x 145 mm; 3.37 x 7.77 x 5.71 in	285 x 205 x 93 mm 11.22 x 8.07 x 3.66 in	5.87 x 3.86 x 1.26in; 149 x 98 x 32mm	5.87 x 3.86 x 1.26in; 149 x 98 x 32mm
Weight	1420 g; 50.1 oz	3600g; 126.4 oz	260g / 9.2oz	260g / 9.2oz
Maximum Wire Gauge:	#4 AWG	#2 AWG	#8 AWG	#8 AWG
Bluetooth® Compatible	YES	YES	YES	NO
Warranty	5 years			
Protection	Battery Reverse Polarity, Solar Array Reverse Polarity, Over temperature, Over Current			

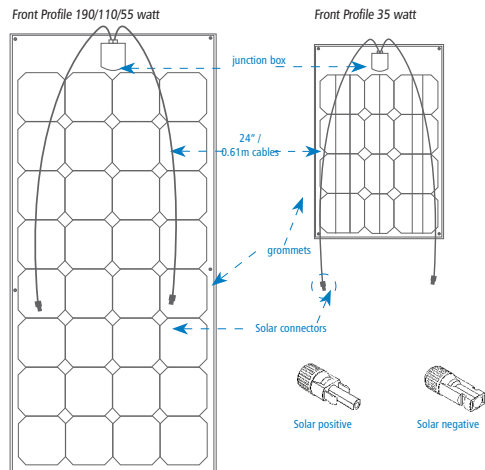
OPTIONAL CABLE ENTRY PLATE

Use our Cable Entry Plate with a Go Power! Solar Kit to run your wire where you want and reduce exposed cables on the roof.

- Built for easy expansion
- Cuts installation time
- Protects cable connections
- Clean and tidy wire configuration
- Eliminates possibility of leaks
- Connects with industry standard Solar cables (included in Go Power! kits)
- 5 year warranty



GP-CEP



Specifications are subject to change.