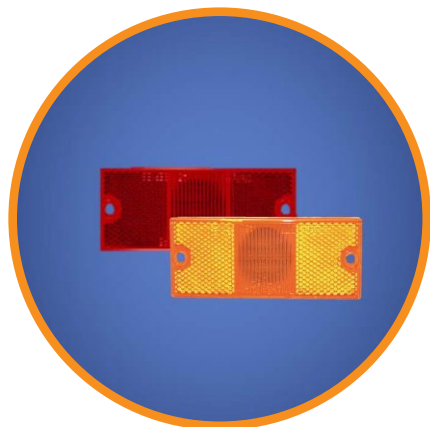




On when  
it counts.



### Application

- LED Marker Light
- LED Clearance Light

### Certifications & Ratings

- FMVSS 108

### Features & Benefits

- Integral wiring
- Low profile
- Integral reflector
- Horizontal or vertical mounting
- Reverse polarity protected
- Maintenance saving
- Convuluted loom covered wires

### Mechanical Information

**Mounting Hole Size** 0.68" (17.3 mm)

**Mounting Torque** 12 – 14 in-lbs.

### Electrical Specification

**Nominal Voltage** 12 VDC and 24 VDC

**Typical Current** 12 VDC – 55 mA @ 12.8 VDC  
24 VDC – 50 mA @ 25.6 VDC

### Construction

**Lens Material** Hard coated polycarbonate

**Housing material** Polycarbonate

**Sealing Method** Vibration Welded

**Gasket Material** Closed cell foam

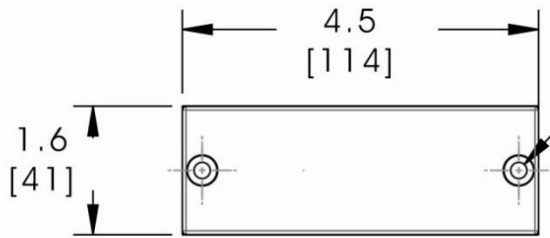
**Connector\*** Delphi 1201-5791 (positive)  
Delphi 1201-0966 (negative)

### Photometric

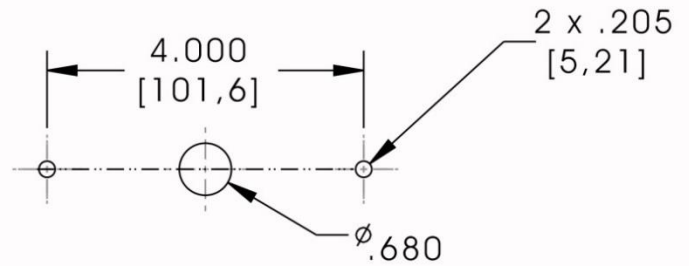
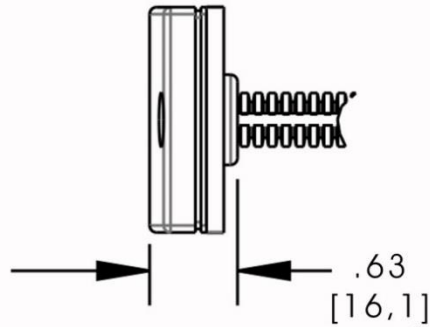
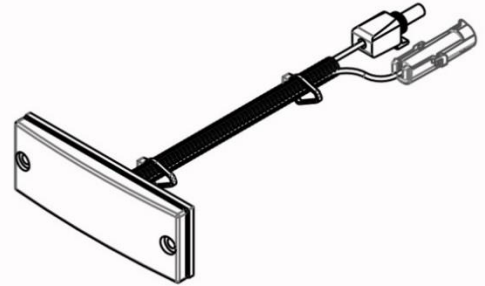
**FMVSS 108** Clearance / Marker Light

**Mounting Limits** Horizontal mount  
Up to 55° slope both colors  
Vertical Mount  
Amber ± 5° slope  
Red ±10° slope

\* Consult Dialight for alternate connector options



.205 TYP  
[5,21]



**RECOMMENDED MOUNTING HOLE PATTERN**

Center mounting hole shown is the minimum size for the product. The hole size may have to vary based on the connector option specified.

Part Number	Color	Voltage
45381AB	Amber	12 VDC
45381RB	Red	12 VDC
45383AB	Amber	24 VDC
45383RB	Red	24 VDC