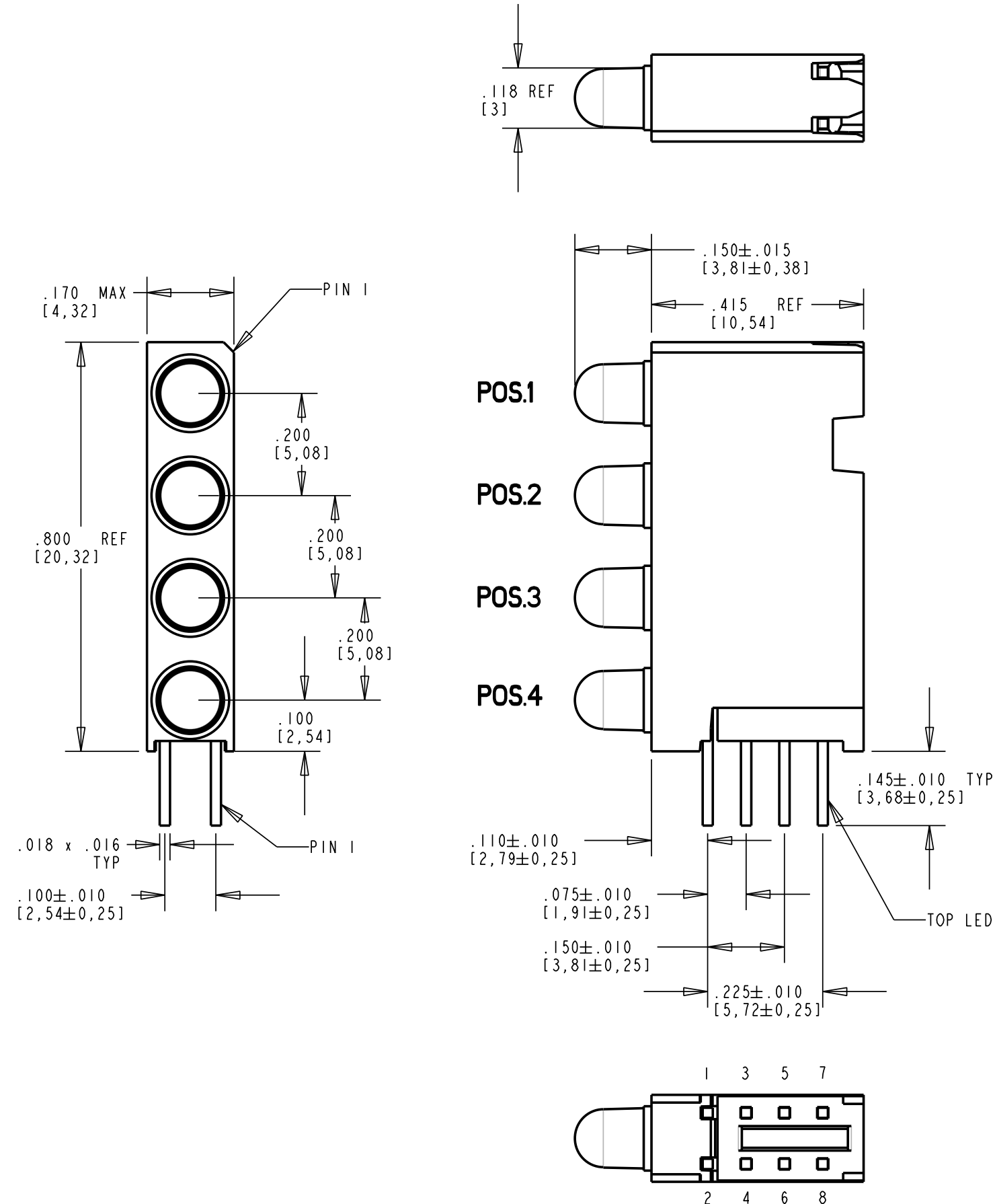


REV	ECN NO	REVISIONS	DRN	CKD	APP	DATE
A		NEW RELEASE	TWC	NO	MES	10-24-09
B		ADDED NOTE 6 & ESD LOGO	SM			

PART NUMBER	POSITION 1	POSITION 2	POSITION 3	POSITION 4
568-0200-001F	** BLANK **	** BLANK **	** BLANK **	RED
568-0200-022F	** BLANK **	** BLANK **	GREEN	GREEN
568-0200-033F	** BLANK **	** BLANK **	YELLOW	YELLOW
568-0200-132F	** BLANK **	RED	YELLOW	GREEN
568-0201-002F	RED	** BLANK **	** BLANK **	GREEN
568-0201-003F	RED	** BLANK **	** BLANK **	YELLOW
568-0201-111F	RED	RED	RED	RED
568-0201-112F	RED	RED	RED	GREEN
568-0201-122F	RED	RED	GREEN	GREEN
568-0201-132F	RED	RED	YELLOW	GREEN
568-0201-312F	RED	YELLOW	RED	GREEN
568-0201-322F	RED	YELLOW	GREEN	GREEN
568-0201-330F	RED	YELLOW	YELLOW	** BLANK **
568-0201-332F	GREEN	YELLOW	YELLOW	GREEN
568-0202-001F	GREEN	** BLANK **	** BLANK **	RED
568-0202-102F	GREEN	RED	** BLANK **	GREEN
568-0202-122F	GREEN	RED	GREEN	GREEN
568-0202-133F	GREEN	RED	YELLOW	YELLOW
568-0202-211F	GREEN	GREEN	RED	RED
568-0202-213F	GREEN	GREEN	RED	YELLOW
568-0202-222F	GREEN	GREEN	GREEN	GREEN
568-0202-223F	GREEN	GREEN	GREEN	YELLOW
568-0202-231F	GREEN	GREEN	GREEN	RED
568-0202-233F	GREEN	GREEN	YELLOW	YELLOW
568-0202-323F	GREEN	YELLOW	GREEN	YELLOW
568-0203-000F	YELLOW	** BLANK **	** BLANK **	** BLANK **
568-0203-032F	YELLOW	** BLANK **	YELLOW	GREEN
568-0203-112F	YELLOW	RED	RED	GREEN
568-0203-123F	YELLOW	RED	GREEN	YELLOW
568-0203-132F	YELLOW	RED	YELLOW	GREEN
568-0203-222F	YELLOW	GREEN	GREEN	GREEN
568-0203-231F	YELLOW	GREEN	YELLOW	RED
568-0203-232F	YELLOW	GREEN	YELLOW	GREEN
568-0203-311F	YELLOW	YELLOW	RED	RED
568-0203-333F	YELLOW	YELLOW	YELLOW	YELLOW



- NOTES:
- 1- LEADS TO FIT INTO HOLES SPACED AS PER HOLE PATTERN
 - 2- LEADS TO BE FREE OF DEFORMATION AFTER BENDING AND CUTTING.
 - 3- LED LEAD DIMENSIONS SHOWN ARE MEASURED AT HOUSING EXIT.
 - 4- WHEN A ZERO APPEARS IN THE LAST 4 DIGITS OF THE PART NUMBER THIS MEANS NO LED REQUIRED IN THAT POSITION
 - 5- DIALIGHT PART NUMBERS = 568-020X-XXXF
 6. THIS ASSEMBLY CONTAINS ELECTROSTATIC DISCHARGE SENSITIVE DEVICES (ESDS). MAINTAIN ALL PRECAUTIONARY MEASURES DURING ASSEMBLY, HANDLING AND STORAGE IN ACCORDANCE WITH IPC-A-610.

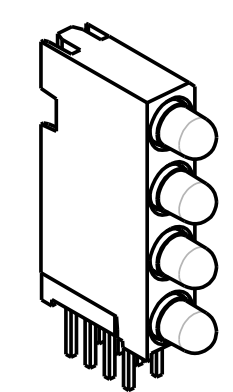
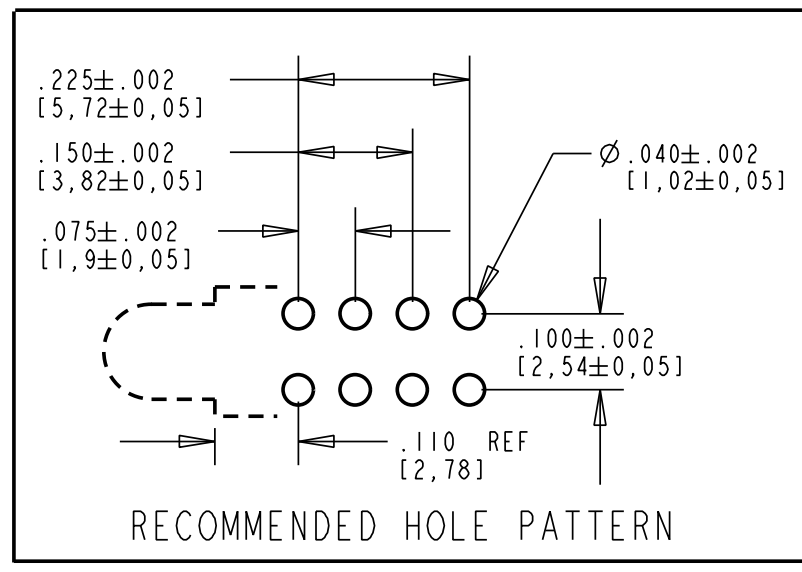
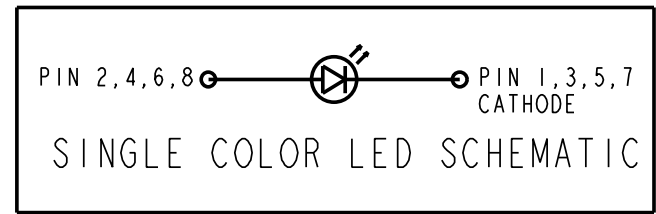
RoHS Compliant 568-020X-XXXF Quad Level Thru hole CBI

Part Numbers with the "F" suffix ending are RoHS Compliant.
 Example: 568-0200-001F
 Packaging is marked with "RoHS Compliant" label or equivalent markings.
 Parts can be wave soldered, dip soldered or hand soldered using typical lead-free soldering process with max 260°C temp. for 5 sec.



OPERATING CHARACTERISTICS AT 25°C AMBIENT						
CHARACTERISTICS	L.E.D. COLOR	MIN	TYP	MAX	UNITS	TEST CONDITIONS
LUMINOUS INTENSITY	RED	1.0	1.6		mcd	I F = 2 mA
	GREEN	1.0	1.6			
	YELLOW	1.0	1.6			
FORWARD VOLTAGE	RED		1.7	2.2	V	I F = 2 mA
	GREEN		1.9	2.2		
	YELLOW		1.8	2.7		
REVERSE CURRENT	ALL			10	µA	V R = 5 V
PEAK WAVELENGTH	RED		635		nm	
	GREEN		565			
	YELLOW		585			
VIEWING ANGLE	ALL		60		Degree	

ABSOLUTE MAXIMUM RATING AT 25°C AMBIENT				
	RED	GREEN	YELLOW	UNITS
POWER DISSIPATION		20		mW
CONTINUOUS FORWARD CURRENT		7		mA
FORWARD SURGE CURRENT (10 µ SEC PULSE)		500		mA
LEAD SOLDERING TEMPERATURE, 5 SEC., 1/16" FROM BODY		260		°C
OPERATING TEMPERATURE		-55 TO 100		°C
STORAGE TEMPERATURE		-55 TO 100		°C



THIS DRAWING AND THE CONTENTS HEREIN ARE CONFIDENTIAL AND THE SOLE PROPERTY OF DIALIGHT. REPRODUCTION OF THIS DRAWING OR CONSTRUCTION OF ANY PARTS WITHIN THIS DRAWING ARE FORBIDDEN WITHOUT THE WRITTEN CONSENT OF DIALIGHT.		
SCALE: 4.000	DRAWING NUMBER	REV
ALL DIM'S IN: INCHES (MM)	C-17321	B
TOLERANCES: UNLESS OTHERWISE SPECIFIED	TITLE STANDARD 4X1 CBI BLOCK	
FRACTIONS: ±1/64	RoHS COMPLIANT	
DECIMALS (.XX): ±.01	MATERIAL	
DECIMALS (.XXX): ±.005	Dialight	
DECIMALS (.XXXX): ±.0005	1501 ROUTE 34 SOUTH	
ANGLES: ±1°	FARMINGDALE, NJ 07727	
FINISH:	FSCM 83330	
SHEET 1 OF 1 FAMILY TABLE:		