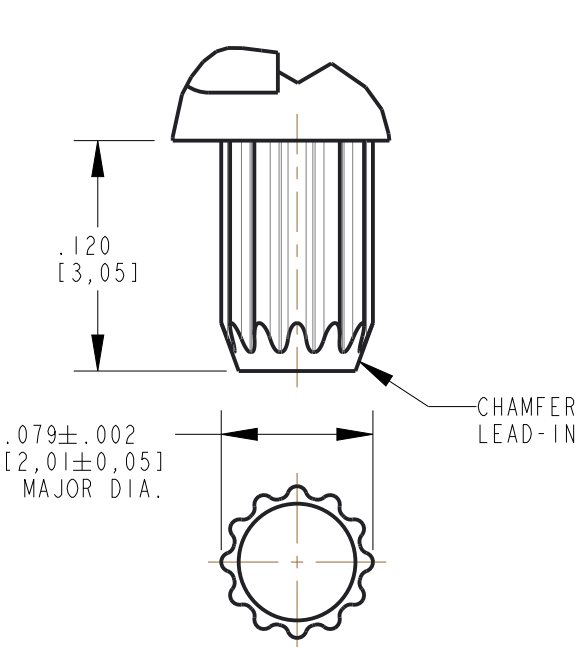
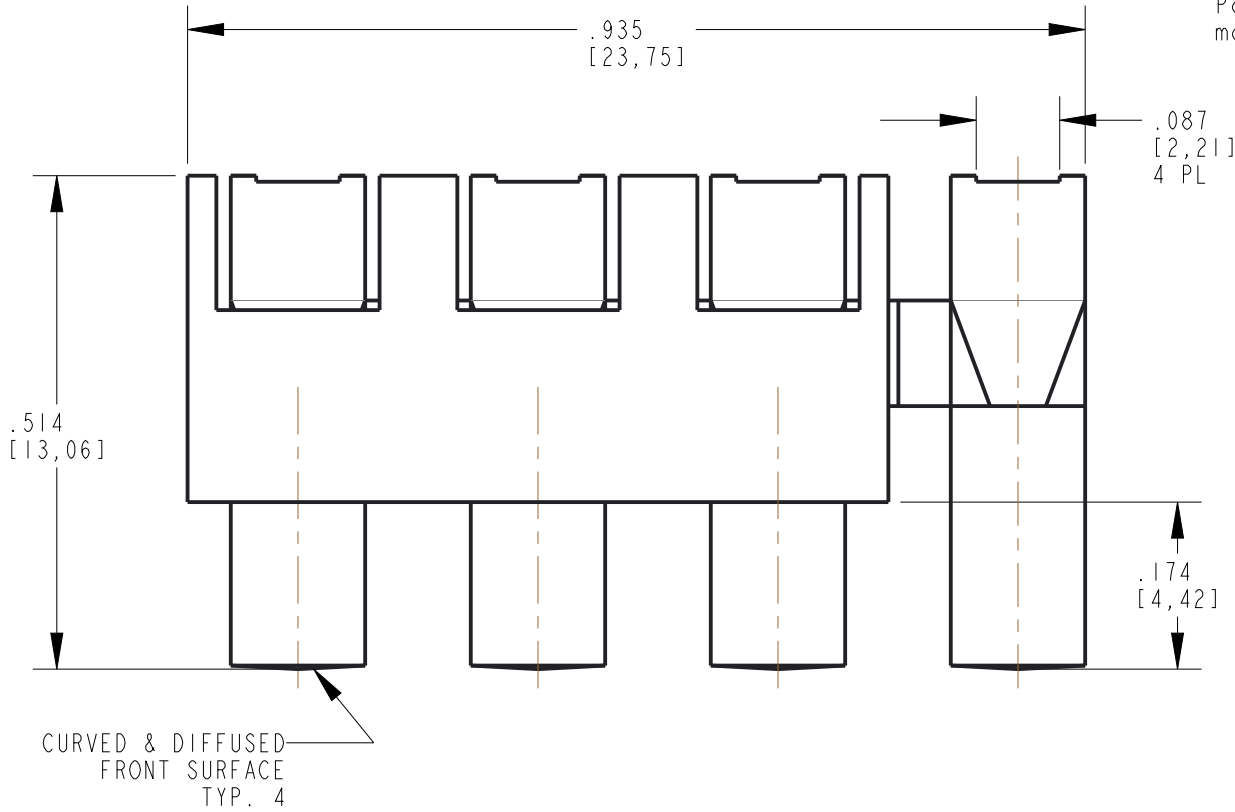


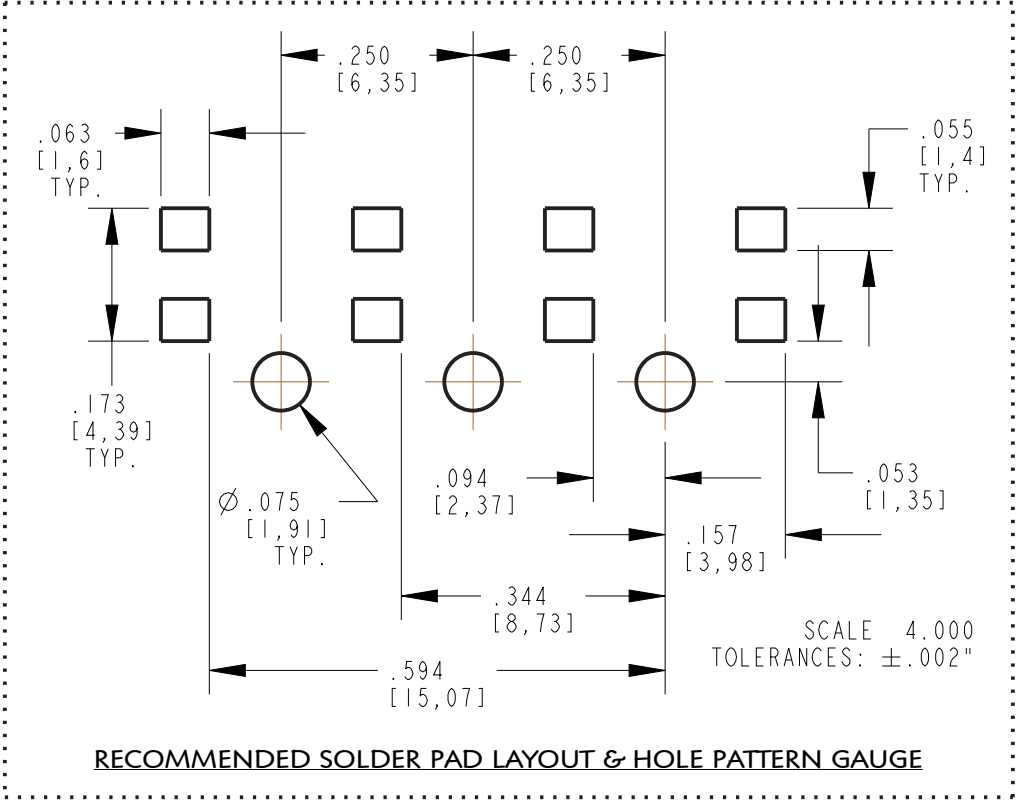
REV	ECN NO	REVISIONS	DRN	CKD	APP	DATE
A		NEW RELEASE	AJF	KLJ	NO	1-25-11
B	92610	ADDED LED POCKET DIMS	LD		NO	4-28-22
C	102982	REVISED NOTE 5 & HOLE WAS Ø.076 ± .002	LD			

RoHS COMPLIANT 515-1020-806F

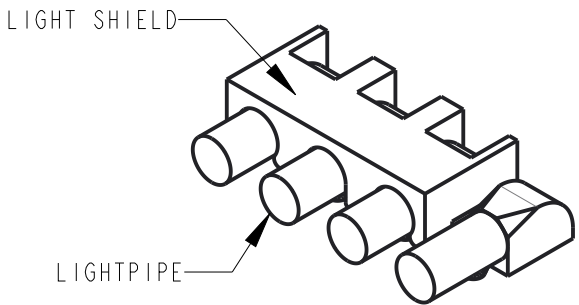
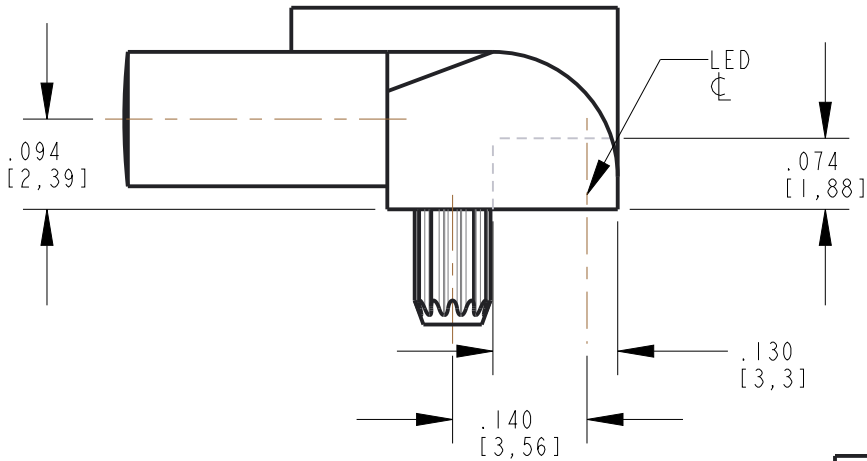
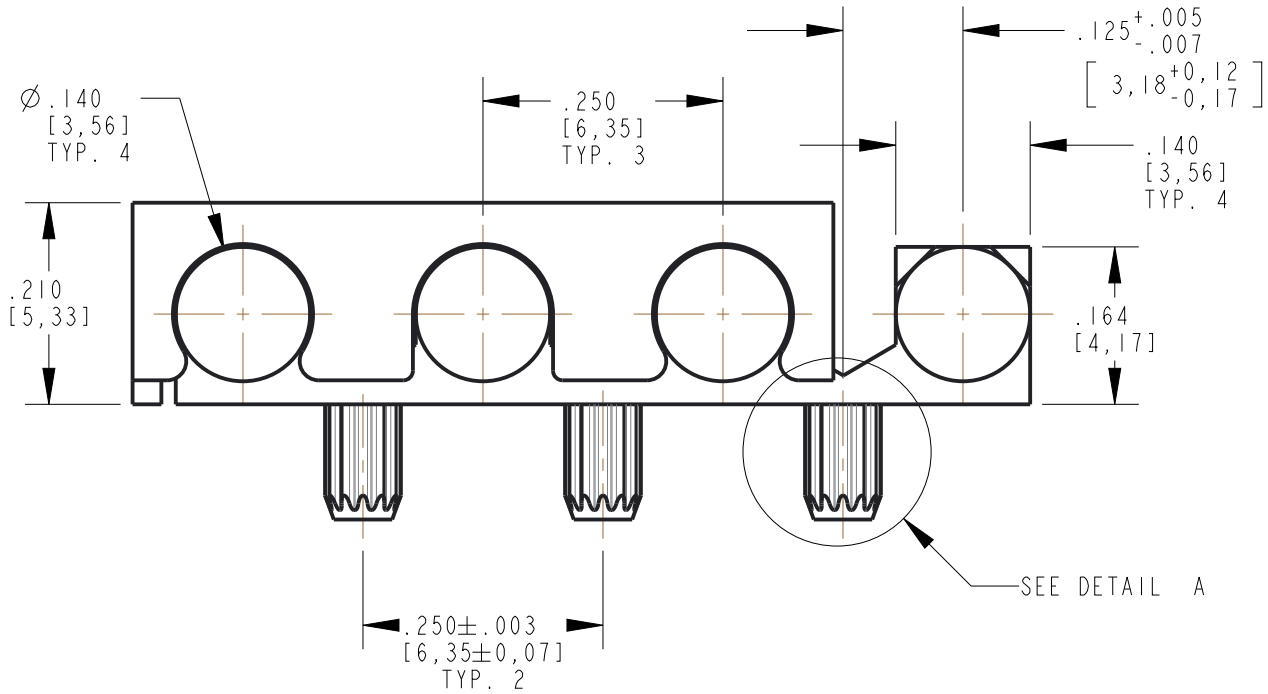
Part Numbers with the "F" suffix ending are RoHS Compliant.  
Packaging is marked with "RoHS Compliant" label or equivalent markings.



DETAIL A  
SCALE 10.000




RECOMMENDED SOLDER PAD LAYOUT & HOLE PATTERN GAUGE



SCALE 2.000

NOTES:

- DIALIGHT PART NUMBER: 515-1020-806F.
- ASSEMBLY CONSISTS OF (1) 4 ELEMENT LIGHTPIPE AND (1) LIGHT SHIELD.
- ASSEMBLY DESIGNED TO BE PRESSED INTO PCB.
- LIGHTPIPE MATERIAL: CLEAR TRANSMISSIVE POLYCARBONATE (94-V0 FLAMMABILITY)
- RECOMMENDED SURFACE MOUNT DIALIGHT LEDs: 599-04XX-127F (SINGLE COLOR)

THIS DRAWING AND THE CONTENTS HEREIN ARE CONFIDENTIAL AND THE SOLE PROPERTY OF DIALIGHT CORP. REPRODUCTION OF THIS DRAWING OR CONSTRUCTION OF ANY PARTS WITHIN THIS DRAWING ARE FORBIDDEN WITHOUT THE WRITTEN CONSENT OF DIALIGHT CORP.		
SCALE: 5.000	DRAWING NUMBER  C-17903	REV  C
ALL DIM's: INCH (mm)		
TOLERANCES: UNLESS OTHERWISE SPECIFIED	TITLE 4 ELEMENT LIGHTPIPE W/ LIGHT SHIELD	
FRACTIONS: $\pm 1/64$ DECIMALS (.XX): $\pm .02$ DECIMALS (.XXX): $\pm .015$		
ANGLES: $\pm 1^\circ$	MATERIAL	
FINISH	 1501 ROUTE 34 SOUTH FARMINGDALE, NJ 07727 (732) 919-3119 www.dialight.com	
FSCM 83330		
SHEET 1 OF 1		FAMILY TABLE: