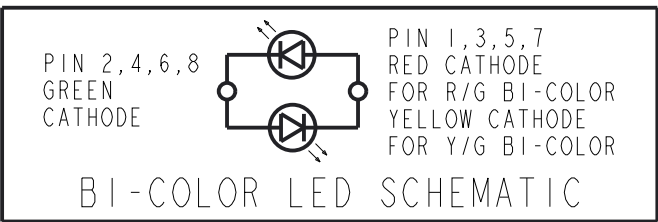
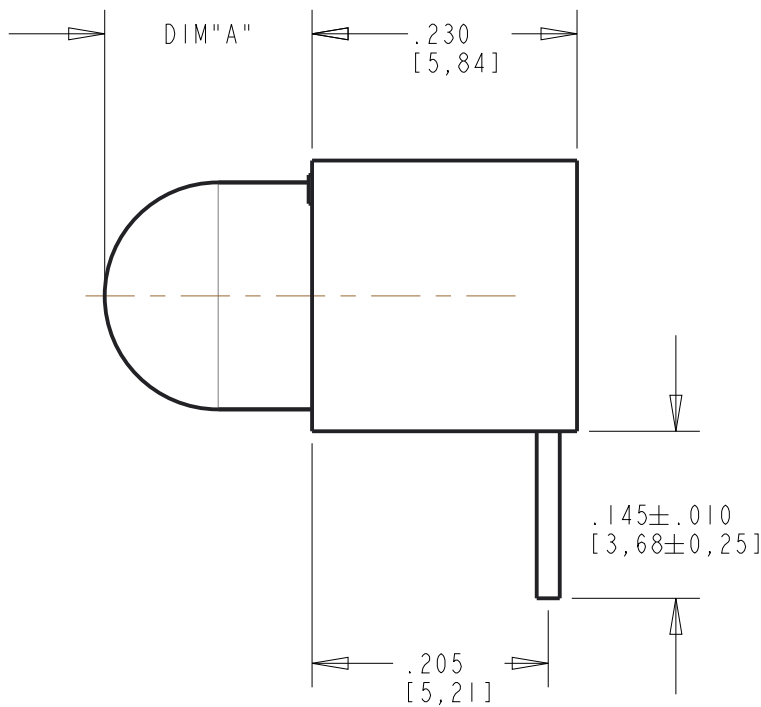
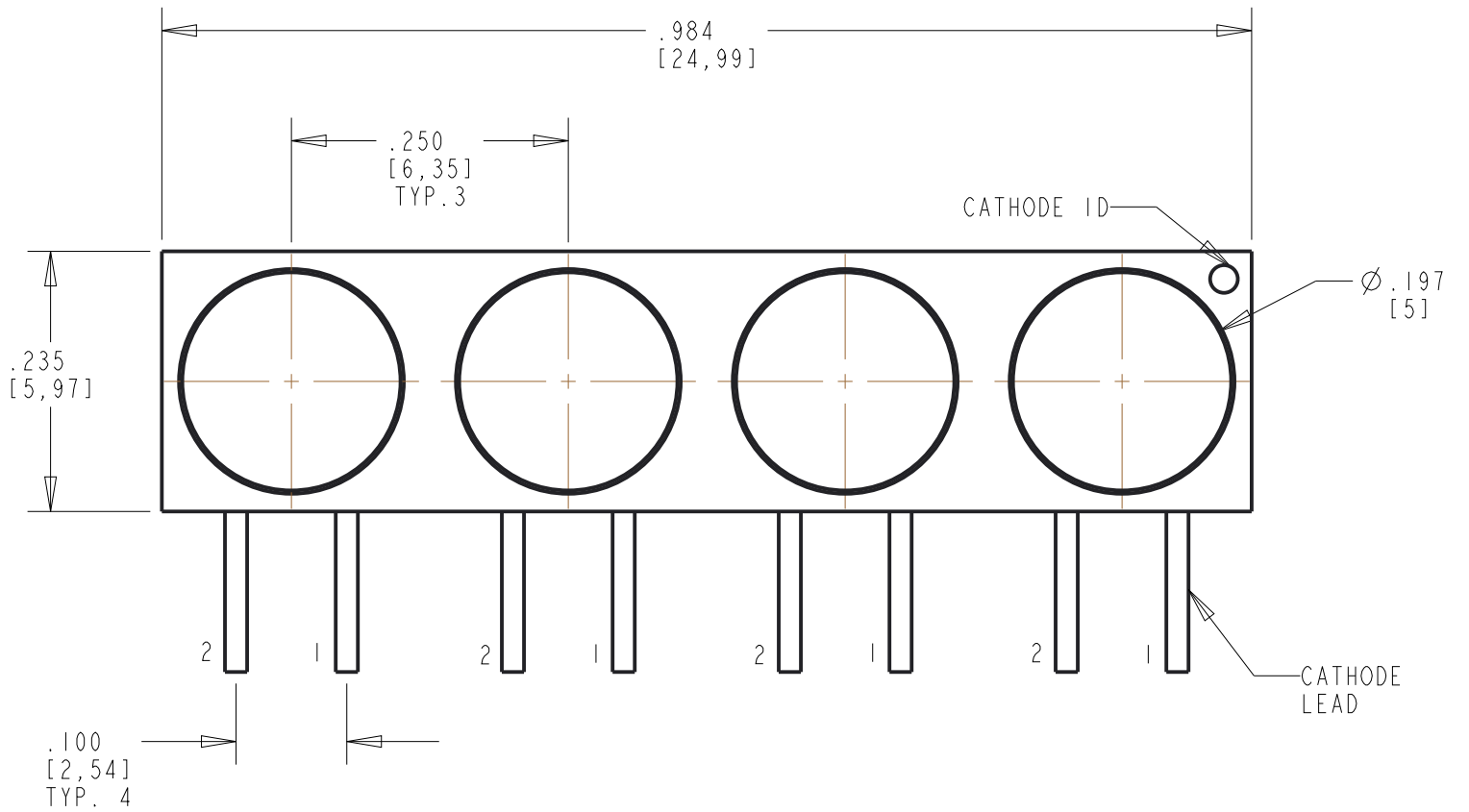


ASSEMBLY NUMBER	LED COLOR	DIMENSIONS			LED OPERATING CHARACTERISTICS AT 25°C AMBIENT											ABSOLUTE MAXIMUM RATINGS AT 25°C AMBIENT				
					PEAK WAVELENGTH (nm) TYP	DOMINANT WAVELENGTH (nm) TYP	VIEWING ANGLE (°)	LUMINOUS INTENSITY (mcd)				FORWARD VOLTAGE (V)			REVERSE CURRENT (mA)	POWER DISSIPATION (mW)	CONTINUOUS FORWARD CURRENT (mA)	PEAK FORWARD CURRENT (mA)	OPERATING TEMPERATURE (°C)	STORAGE TEMPERATURE (°C)
		DIM "A"	DIM "B"	DIM "C"				TEST CONDITION	MIN	TYP	MAX	TEST CONDITION	TYP	MAX	MAX					
550-0205-004F	GREEN DIFFUSED	.135	.020	.043	565	570	60	10 mA	25	60	90	20 mA	2.1	2.6	100 @ Vf=5V	100	30	90	-55 TO +100	-55 TO +100
550-0305-004F	YELLOW DIFFUSED	.135	.020	.043	585	588	60	10 mA	3.7	12.6		20 mA	2.1	2.6	100 @ Vf=5V	60	20	80	-55 TO +100	-55 TO +100
550-0405-004F	RED DIFFUSED	.135	.020	.043	635	625	60	10 mA	19	60		20 mA	2.0	2.6	100 @ Vf=5V	100	30	120	-55 TO +100	-55 TO +100
550-0505-004F	RED DIFFUSED 5 VOLT	.197	.025	.050	635		60	5v	2.1	—			—	—	100 @ Vf=5V	—	—	—	-40 TO +85	-40 TO +100
550-0705-004F	GREEN DIFFUSED 5 VOLT	.197	.025	.050	565		60	5v	—	1.8			—	—	100 @ Vf=5V	—	—	—	-20 TO +85	-40 TO +100
550-0805-004F	YELLOW DIFFUSED 5 VOLT	.197	.025	.050	583		60	5v	2.0	8.0			—	—	100 @ Vf=5V	—	—	—	-40 TO +85	-55 TO +100
550-1105-004F	RED TINTED DIFFUSED 2mA	.197	.018	.040	635	626	50	2 mA	1.5	2.3		2 mA	1.7	2.0	50 @ Vf=5V	14	7	7	-40 TO +100	-40 TO +100
550-1205-004F	YELLOW TINTED DIFFUSED 2mA	.197	.018	.040	583	565	50	2 mA	1.2	1.8		2 mA	1.9	2.7	50 @ Vf=5V	36	7	7	-55 TO +100	-55 TO +100
550-1305-004F	GREEN TINTED DIFFUSED 2mA	.197	.018	.040	565		50	2 mA	1.2	1.8		2 mA	1.9	2.2	50 @ Vf=5V	15.4	7	7	-20 TO +100	-40 TO +100
550-2205-004F	GREEN DIFFUSED	.190	.020	.043	563		65	10 mA	3.6	10.0			2.1	3.0	10 @ Vf=3V	75	25	60	-25 TO +85	-30 TO +100
550-2305-004F	YELLOW DIFFUSED	.190	.020	.043	585	590	50	10 mA	19	40	100	20 mA	2.1	2.6	100 @ Vf=5V	52	20	60	-40 TO +85	-40 TO +100
550-2405-004F	RED DIFFUSED	.190	.020	.043	650		50	10 mA	2.2	6.3			2.2	2.55	10 @ Vf=3V	60	20	60	-25 TO +85	-30 TO +100
550-2505-004F	ORANGE DIFFUSED	.190	.018	.040	600	605	60	10 mA	6.1	60		10 mA	1.9	2.4	100 @ Vf=5V	135	25	90	-40 TO +100	-40 TO +100
550-3005-004F	RED/GREEN BI-COLOR	.197	.020	.043	660/565		60	20 mA	29/12.6	90/40			1.8/2.1	2.4/2.8	100 @ Vf=5V	100/100	40/30	200/120	-55 TO +100	-55 TO +100
550-3105-004F	YEL/GREEN BI-COLOR	.190	.020	.043	585/565		50	20 mA	2.5/2.5	8.7/8.7			2.1/2.1	2.8/2.8	100 @ Vf=5V	60/100	20/30	80/120	-55 TO +100	-55 TO +100
550-5105-004F	RED DIFFUSED	.190	.020	.043	635	623	50	10 mA	19	40	90	20 mA	2.1	2.6	100 @ Vf=5V	81	30	60	-40 TO +85	-40 TO +100
550-5205-004F	GREEN TINTED DIFFUSED	.190	.020	.043	569	571	50	10 mA	19	40	90	20 mA	2.2	2.6	100 @ Vf=5V	52	20	60	-40 TO +85	-40 TO +100
550-5405-004F	AMBER TINTED DIFFUSED	.190	.020	.043	610	602	50	10 mA	12.6	40	90	20 mA	2.0	2.6	100 @ VF=5V	60	20	60	-40 TO +85	-40 TO +100
550-5505-004F	RED NON-DIFFUSED, WATER CLEAR	.197	.018	.040	635		24	20 mA	80	125			2.2	3.0	100 @ Vf=5V	135	30	500	-55 TO +100	-55 TO +100
550-5605-004F	GRN NON-DIFFUSED, WATER CLEAR	.197	.018	.040	565		24	20 mA	80	120			2.3	3.0	100 @ Vf=5V	135	30	500	-20 TO +100	-55 TO +100
550-5705-004F	YEL NON-DIFFUSED, WATER CLEAR	.197	.018	.040	583		24	20 mA	80	140			2.2	3.0	100 @ Vf=5V	85	20	500	-55 TO +100	-55 TO +100
550-5805-004F	AMB NON-DIFFUSED, WATER CLEAR	.190	.024	.050	611		30	20 mA	240	700			2.05	2.4	100 @ VF=5V	75	30	60	-40 TO +100	-55 TO +100

REV	ECN NO	REVISIONS	DRN	CKD	DATE
A	92292	NEW RELEASE	LD	NO	4-26-22



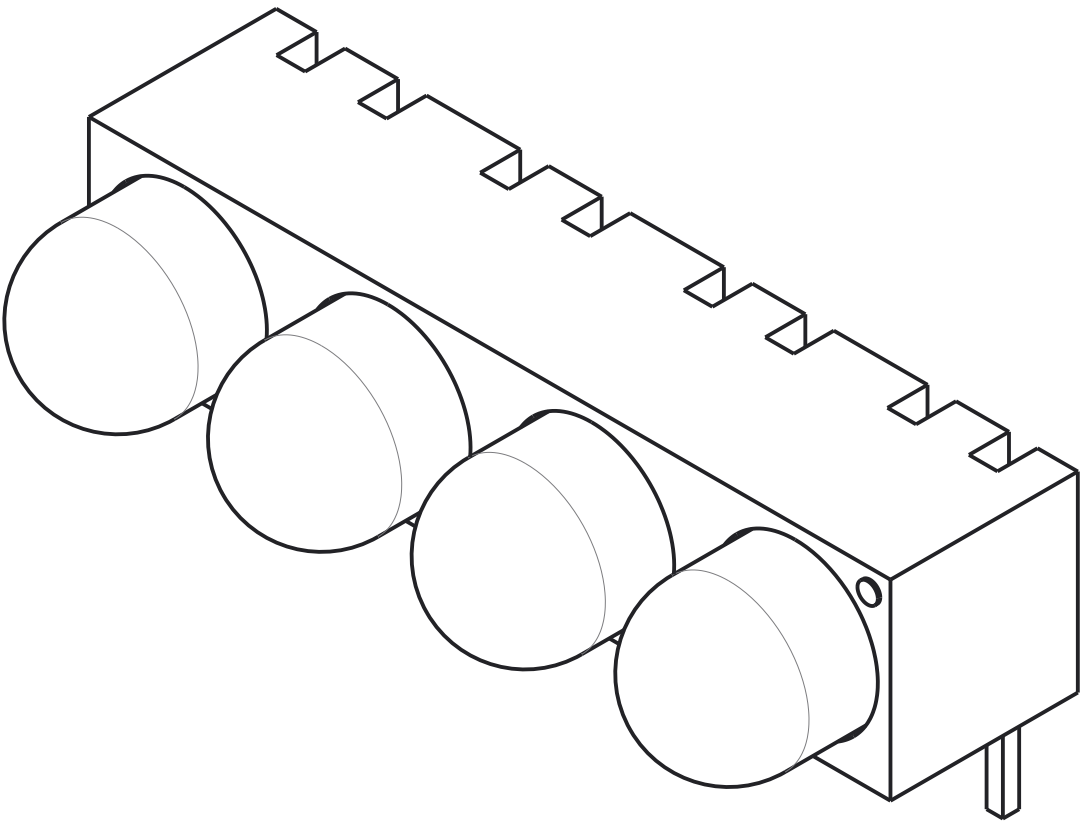
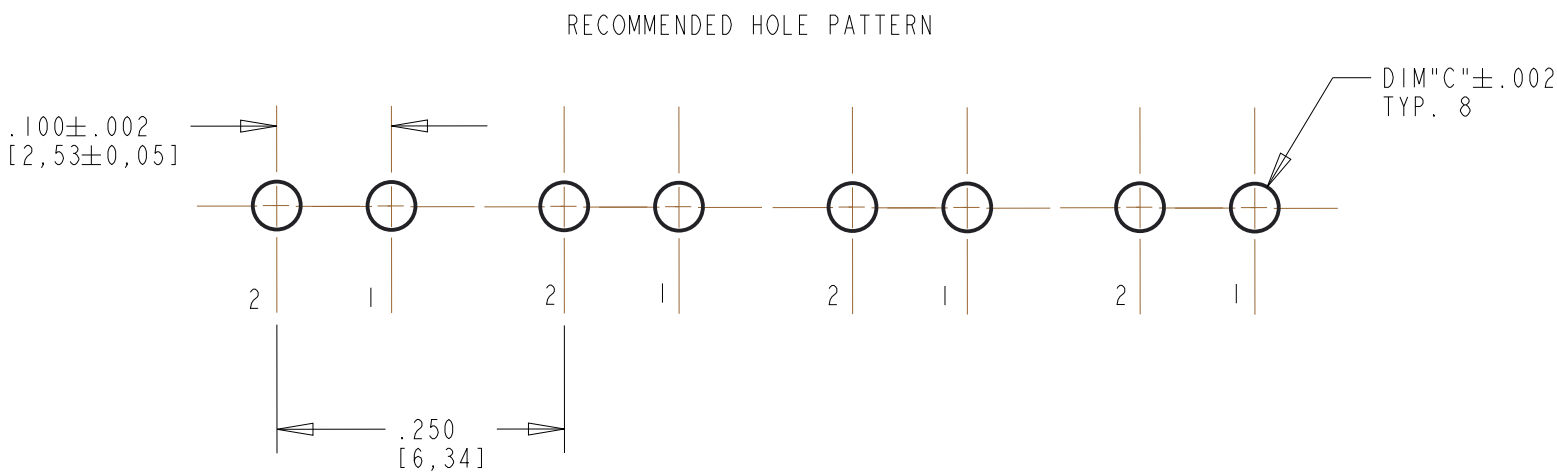
LAMP PREPARATION BEFORE ASSEMBLY (CODE **)
SHEAR FLANGE - BODY DIA. AT BASE = .200 MAX

RoHS COMPLIANT 550-XX05-004F

Part Numbers with the "F" suffix ending are RoHS Compliant.
For example: 550-2207-004F
Packaging is marked with "RoHS Compliant" label or equivalent markings. Parts can be wave soldered, dip soldered or hand soldered using typical lead-free soldering process with max 260°C temp. for 5 sec.

NOTES:

- LED LEAD DIMENSIONS SHOWN ARE MEASURED AT HOUSING EXIT.
- LEADS TO FIT INTO HOLES SPACED AS PER PATTERN.
- PIN NUMBERS FOR REFERENCE ONLY, DESIGNATION NON-EXISTENT ON PART.
- DIALIGHT PART NUMBERS: 550-XX05-004F.
- THIS ASSEMBLY CONTAINS ELECTROSTATIC DISCHARGE SENSITIVE DEVICES (ESDS). MAINTAIN ALL PRECAUTIONARY MEASURES DURING ASSEMBLY, HANDLING, AND STORAGE IN ACCORDANCE WITH IPC-A-610.



THIS DRAWING AND THE CONTENTS HEREIN ARE CONFIDENTIAL AND THE SOLE PROPERTY OF DIALIGHT CORP. REPRODUCTION OF THIS DRAWING OR CONSTRUCTION OF ANY PARTS WITHIN THIS DRAWING ARE FORBIDDEN WITHOUT THE WRITTEN CONSENT OF DIALIGHT CORP.		
SCALE: 6.000	DRAWING NUMBER	REV
ALL DIM'S IN: INCHES (MM)	C-18053	A
TOLERANCES: UNLESS OTHERWISE SPECIFIED	TITLE	
FRACTIONS: ±1/64	5MM MULTI-BLOCK CBI	
DECIMALS (.XX): ±.01	MATERIAL	
DECIMALS (.XXX): ±.005		
DECIMALS (.XXXX): ±.0005		
ANGLES: ±1°		
FINISH		
FSCM 83330		
	SHEET 1 OF 1	FAMILY TABLES: