

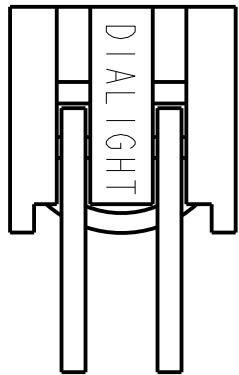
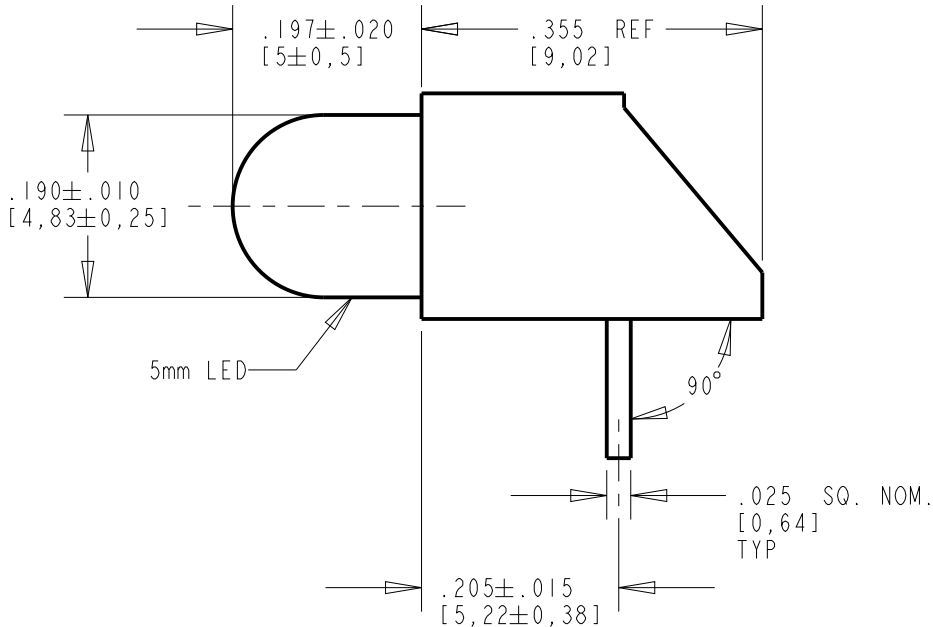
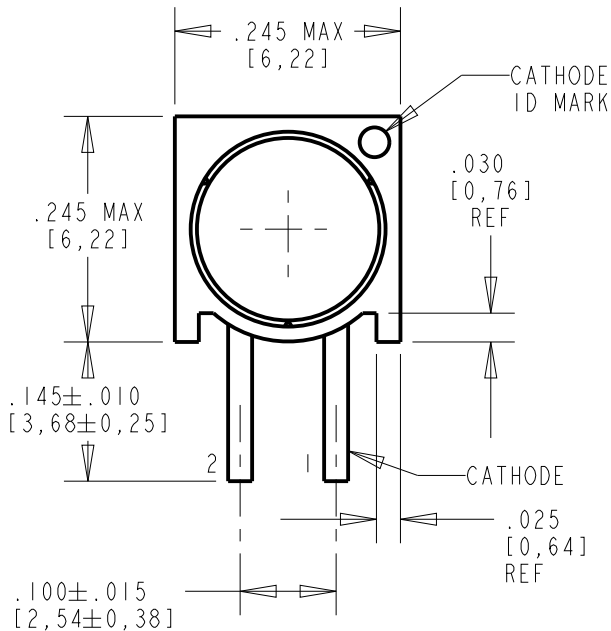
PART NUMBER	LED COLOR	REV	ECN NO	REVISIONS	DRN	CKD	APP	DATE
550-0507-801F	RED DIFFUSED, 5V	A	—	NEW RELEASE	RSK	WFB	NO	12/18/14

OPERATING CHARACTERISTICS AT T<sub>A</sub>= 25°C

LED CHARACTERISITICS	MIN	TYP	MAX	UNITS	TEST CONDITIONS
LUMINOUS INTENSITY	2.1	—	—	mcd	V <sub>F</sub> = 5 V
PEAK WAVELENGTH	—	635	—	nm	
VIEWING ANGLE (2 θ 1/2)	—	60	—	DEG	
FORWARD CURRENT	—	10	15	mA	V <sub>F</sub> = 5 V

ABSOLUTE MAXIMUM RATINGS AT T<sub>A</sub>= 25°C

PARAMETER	VALUE	UNITS
DC FORWARD VOLTAGE	7.5	V
REVERSE VOLTAGE (I <sub>R</sub> = 100μA)	5	V
DERATE LINEARLY FROM 50°C	.071	V/°C
OPERATING TEMPERATURE RANGE	-40 to +85	°C
STORAGE TEMPERATURE RANGE	-55 to +100	°C
SOLDER WAVE TEMPERATURE 3 SEC. MAX	250	°C
MANUAL SOLDER DIPPING 5 SEC.	260	°C

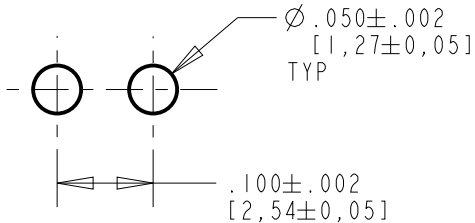


RoHS COMPLIANT 550-0507-801F

Part Numbers with the "F" suffix ending are RoHS Compliant. Packaging is marked with "RoHS Compliant" label or equivalent markings. Parts can be wave soldered, dip soldered or hand soldered using typical lead-free soldering process with max 260°C temp. for 5 sec.




ATTENTION:  
OBSERVE PRECAUTIONS FOR  
HANDLING ELECTROSTATIC  
SENSITIVE DEVICES



NOTES:

- LED LEAD DIMENSIONS SHOWN ARE MEASURED AT HOUSING EXIT.
- LEADS TO FIT INTO HOLES SPACED AS PER PATTERN.
- PIN NUMBERS FOR REFERENCE ONLY, DESIGNATION NON-EXISTENT ON PART.
- PARTS ARE PACKAGED USING METALLIC ANTI-STATIC BAG, QTY 100 PER BAG.
- THIS ASSEMBLY CONTAINS ELECTROSTATIC DISCHARGE SENSITIVE DEVICES (ESDS). MAINTAIN ALL PRECAUTIONARY MEASURES DURING ASSEMBLY, HANDLING, AND STORAGE IN ACCORDANCE WITH IPC-A-610.

RECOMMENDED HOLE PATTERN GAUGE

THIS DRAWING AND THE CONTENTS HEREIN ARE CONFIDENTIAL AND THE SOLE PROPERTY OF DIALIGHT. REPRODUCTION OF THIS DRAWING OR CONSTRUCTION OF ANY PARTS WITHIN THIS DRAWING ARE FORBIDDEN WITHOUT THE WRITTEN CONSENT OF DIALIGHT.		
SCALE: DRAWING SCALE	DRAWING NUMBER  C-18141	REV  A
ALL DIM'S IN: INCHES (MM)		
TOLERANCES: UNLESS OTHERWISE SPECIFIED	TITLE 5mm LED CBI, INTEGRAL RESISTOR W/ESD BAG RoHS COMPLIANT	
FRACTIONS: ±1/64 DECIMALS (.XX): ±.01 DECIMALS (.XXX): ±.005 DECIMALS (.XXXX): ±.0005 ANGLES: ±3°		
FINISH:	MATERIAL	
FSCM 83330		1501 ROUTE 34 SOUTH FARMINGDALE, NJ 07727
	SHEET 1 OF 1	FAMILY TABLE: